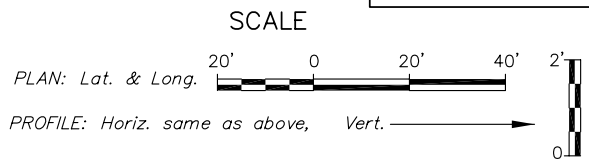
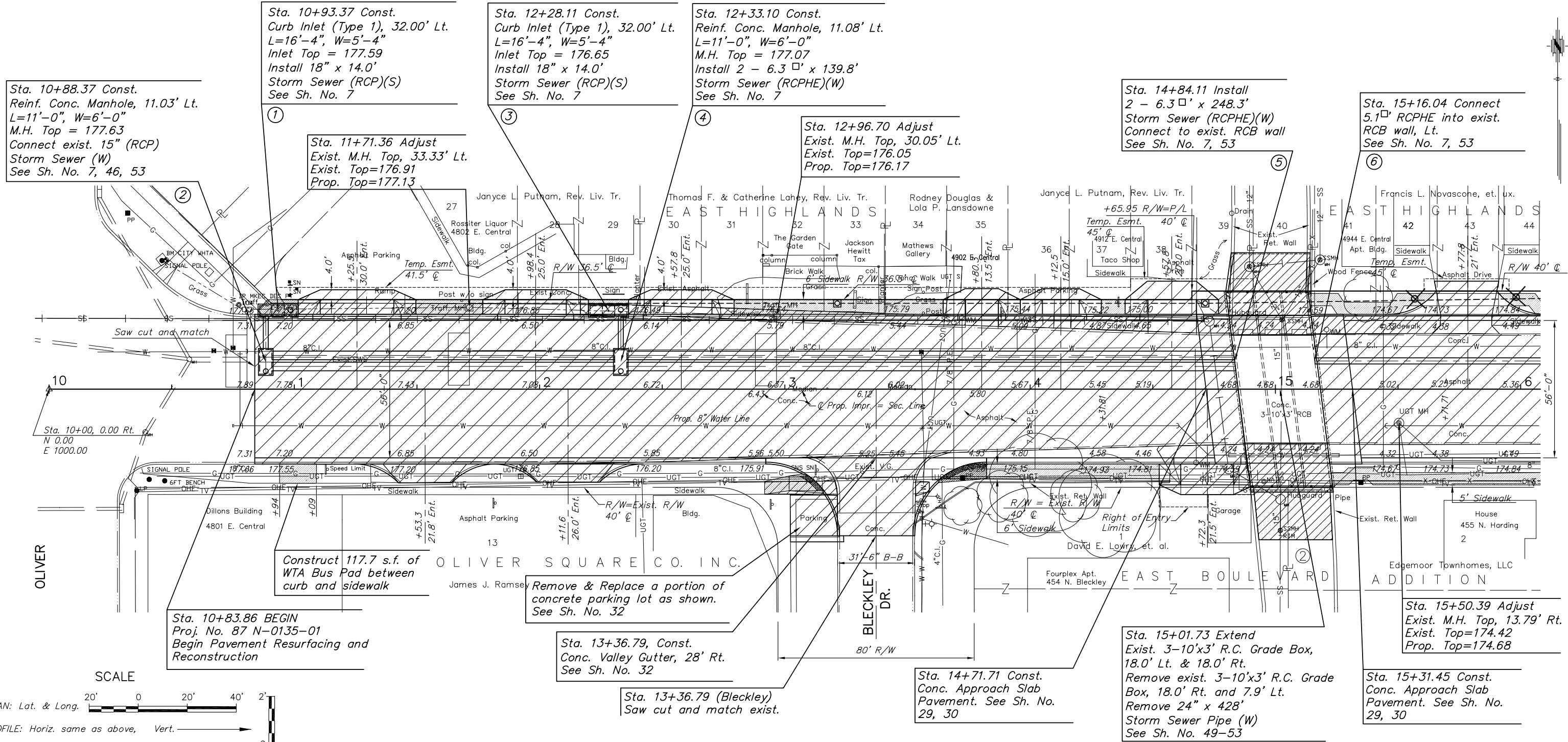


P.I. Southwest Corner Sec. 13, T27S, R1E
 1. Found Iron Pipe in Thimble
 2. 0.00' Rt., @ Sta. 9+99.93
 3. N -0.382, E 999.928
 4. No references set

P.I. South Quarter Corner, Sec. 13, T27S, R1E
 1. Found Iron Pipe in Thimble
 2. 0.00' Rt., @ Sta. 36+53.21
 3. N 0.00, E 3653.21
 4. No references set

| STATE | PROJECT NO. | YEAR | SHEET NO. | SHEETS |
|--------|-------------|------|-----------|--------|
| KANSAS | 87N-0135-01 | 2005 | 6 | 137 |



PROJECT SURVEY CONTROL
 Horiz. Proj. Datum: Kansas Coordinate System 1983 South Zone
 Project Coordinate: SW Corner Sec. 13, T27S, R1E N -0.382, E 999.928
 Vert. Datum: Wichita City Datum + 1187.4 = NGVD 29
 Datum Bench Mark: C.O.W. Disk located at the southwest corner Woodlawn and Central
 USGS Elevation: 1380.12 (192.72 C.O.W.)

UTILITIES

| | |
|-------------------------------|--------------|
| COX COMMUNICATIONS (CABLE) | 262-0661 |
| WESTAR (ELECTRIC) | 261-6512 |
| KANSAS GAS SERVICE (GAS) | 832-3101 |
| SBC (TELEPHONE) | 800-870-8390 |
| CITY OF WICHITA WATER & SEWER | 262-6000 |
| AQUILA (GAS) | 946-0096 |

LEGEND

- Pavement Removal
- Trees to be Removed

BM #1: North Rim of City of Wichita Traffic Signal MH, NE Corner Central and Oliver
 Sta. 10+47.78, 52.68' Lt. Elev. = 178.10

IMPORTANT NOTE:
 Sta. 10+00, 0.00' Rt. is an assumed point. The Baseline and all station/offset references between Sta. 10+00 and Sta. 36+53.21 are based off this assumed point.

H:\CIVIL\03149\dwg\pave\03149PL1.dwg 02/28/2006 01:59:02 PM CST
 KANSAS DEPARTMENT OF TRANSPORTATION
STREET IMPROVEMENT PLAN
 STA. 10+00 TO STA. 16+00
 PROJECT NO. 87N-0135-01 SEDGWICK CO.
 M K E C ENGINEERING CONSULTANTS, INC.
 WICHITA, KANSAS

| | |
|--------------------|-----------------------------|
| DESIGNED BY: JRA | CHECKED BY: JRA |
| DRAWN BY: JSB, DPG | DATE: DEC 05 SHEET 6 OF 137 |