

P.I. Southwest Corner Sec. 13, T27S, R1E  
 1. Found Iron Pipe in Thimble  
 2. 0.00' Rt., @ Sta. 9+99.93  
 3. N -0.382, E 999.928  
 4. No references set

P.I. South Quarter Corner, Sec. 13, T27S, R1E  
 1. Found Iron Pipe in Thimble  
 2. 0.00' Rt., @ Sta. 36+53.21  
 3. N 0.00, E 3653.21  
 4. No references set

STATE	PROJECT NO.	YEAR	SHEET NO.	SHEETS
KANSAS	87N-0135-01	2005	8	137

Sta. 16+82.24 Const.  
 Curb Inlet (Type 1), 31.45' Lt.  
 L=11'-4", W=4'-4"  
 Inlet Top = 175.43  
 Install 18" x 17.51'  
 Storm Sewer (RCP)(SE)  
 See Sh. No. 9

Sta. 16+91.50 Const.  
 Manhole (D=5'), 11.5' Lt.  
 M.H. Top = 175.70  
 Install 5.1' x 173.46'  
 Storm Sewer (RCPHE)(W)  
 See Sh. No. 9

Sta. 19+79.76 Const.  
 Manhole (D=5'), 11.5' Lt.  
 M.H. Top = 182.56  
 Install 24" x 283.68'  
 Storm Sewer (RCP)(W)  
 See Sh. No. 9

Sta. 19+95.12 Install  
 Conc. Valley Gutter, 28' Lt.  
 See Sh. No. 32

Sta. 19+95.12 (Battin)  
 Saw cut and match existing

Remove & Replace a portion  
 of concrete driveway  
 pavement as shown.

Sta. 20+41.78 Const.  
 Manhole (D=5'), 11.5' Lt.  
 M.H. Top = 184.08  
 Install 24" x 57.41'  
 Storm Sewer (RCP)(W)  
 See Sh. No. 9

Sta. 20+42.97 Const.  
 Curb Inlet (Type 1A), 33.67' Lt.  
 L=11'-4", W=4'-4"  
 Inlet Top = 184.08  
 Install 18" x 19.04'  
 Storm Sewer (RCP)(S)  
 See Sh. No. 9

Sta. 16+63.36 -Install  
 Conc. Valley Gutter, 28' Rt.  
 See Sh. No. 27

Sta. 16+63.36, 66.43' Rt.  
 Const. Asphalt Hook-up.  
 See Sh. No. 5

Sta. 16+63.36 (Harding)  
 Saw cut and match existing

Sta. 17+10.69 Const.  
 Curb Inlet (Type 1), 31.45' Rt.  
 L=6'-4", W=4'-4"  
 Inlet Top = 175.81  
 Install 18" x 43.69'  
 Storm Sewer (RCP)(NE)  
 See Sh. No. 9

Sta. 18+00.0 to 19+00.0  
 Const. 2' Modular Retain. Wall,  
 36.5' Rt.  
 See Sh. No. 48

Sta. 18+80 to Sta. 19+60, Rt.  
 Grade yard to drain toward street  
 Grade around tree at Sta. 19+55.75.  
 Protect tree during construction.

Sta. 19+79.76 Const.  
 Curb Inlet (Type II), 72.23' Rt.  
 L=6'-2 1/2", W=3'-4 3/8"  
 Inlet Top = 181.80  
 Install 15" x 78.87'  
 Storm Sewer (RCP)(N)  
 See Sh. No. 9

Sta. 19+94.44 Install  
 Conc. Valley Gutter, 28' Rt.  
 See Sh. No. 32

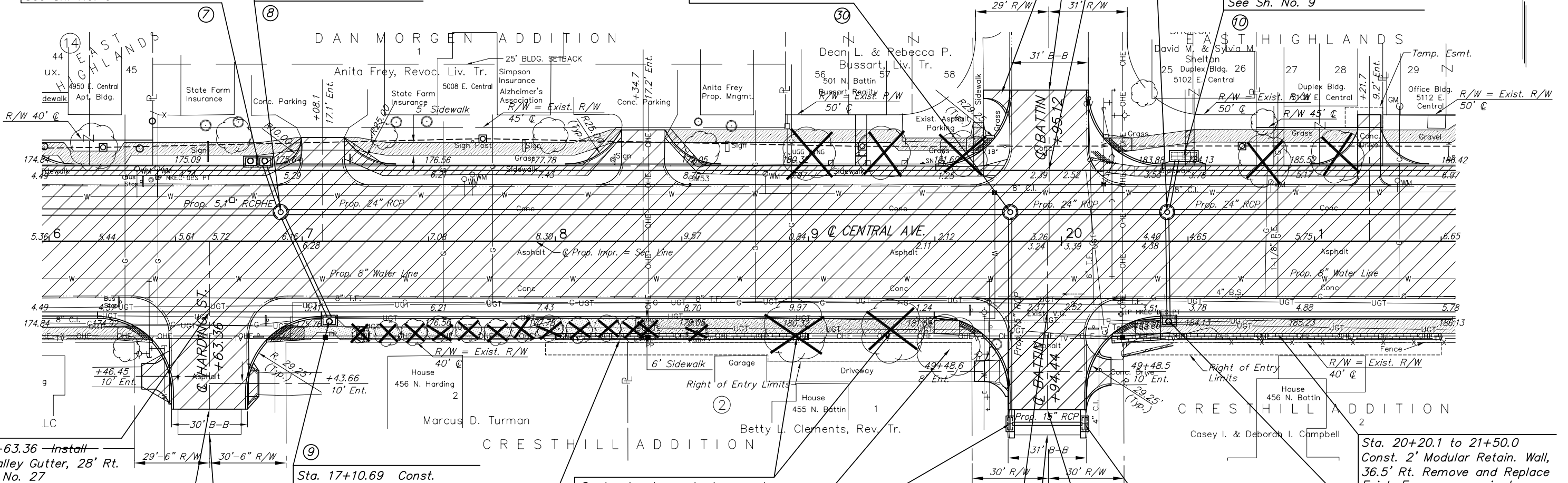
Sta. 19+94.44 (Battin)  
 Saw cut and match existing

Sta. 20+09.12 Const.  
 Curb Inlet (Type II), 72.23' Rt.  
 L=6'-2 1/2", W=3'-4 3/8"  
 Inlet Top = 181.87  
 Install 15" x 27.33'  
 Storm Sewer (RCP)(W)  
 See Sh. No. 9

Sta. 20+20.1 to 21+50.0  
 Const. 2' Modular Retain. Wall,  
 36.5' Rt. Remove and Replace  
 Exist. Fence as required.  
 See Sh. No. 48

Sta. 20+09.12 Const.  
 Curb Inlet (Type II), 72.23' Rt.  
 L=6'-2 1/2", W=3'-4 3/8"  
 Inlet Top = 181.87  
 Install 15" x 27.33'  
 Storm Sewer (RCP)(W)  
 See Sh. No. 9

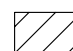

Sta. 20+42.21 Const.  
 Curb Inlet (Type 1), 31.38' Rt.  
 L=6'-4", W=4'-4"  
 Inlet Top = 183.93  
 Install 15" x 39.47'  
 Storm Sewer (RCP)(N)  
 See Sh. No. 9



UTILITIES

COX COMMUNICATIONS (CABLE)	262-0661
WESTAR (ELECTRIC)	261-6512
KANSAS GAS SERVICE (GAS)	832-3101
SBC (TELEPHONE)	800-870-8390
CITY OF WICHITA WATER & SEWER	262-6000
AQUILA (GAS)	946-0096

LEGEND

-  Pavement Removal
-  Trees to be Removed

H:\CIVIL\03149\dwg\pave\03149PL2.DWG 02/28/2006 02:19:46 PM CST  
 KANSAS DEPARTMENT OF TRANSPORTATION  
**STREET IMPROVEMENT PLAN**  
**STA. 16+00 TO STA. 21+50**  
 PROJECT NO. 87N-0135-01 SEDGWICK CO.  
 M K E C ENGINEERING CONSULTANTS, INC.  
 WICHITA, KANSAS

DESIGNED BY: JRA	CHECKED BY: JRA
DRAWN BY: JSB, DPG	DATE: SHEET 8 OF 137