

P.I. Southwest Corner Sec. 13, T27S, R1E
 1. Found Iron Pipe in Thimble
 2. 0.00' Rt., @ Sta. 9+99.93
 3. N -0.382, E 999.928
 4. No references set

P.I. South Quarter Corner, Sec. 13, T27S, R1E
 1. Found Iron Pipe in Thimble
 2. 0.00' Rt., @ Sta. 36+53.21
 3. N 0.00, E 3653.21
 4. No references set

Sta. 26+57.29 (Old Manor)
 Saw cut and match existing

Sta. 26+57.29, 59.75' Lt.
 Const. Asphalt Hook-up.
 See Sh. No. 5

Sta. 26+38.64 (Old Manor) Install
 Curb Inlet (Type 1A), 65.75' Lt.
 L=6'-4", W=4'-4"
 Inlet Top = 193.59
 Install 18" x 51.99'
 Storm Sewer (RCP)(SW)
 See Sh. No. 11

Sta. 26+57.29 Install
 Conc. Valley Gutter, 28' Lt.
 See Sh. No. 32

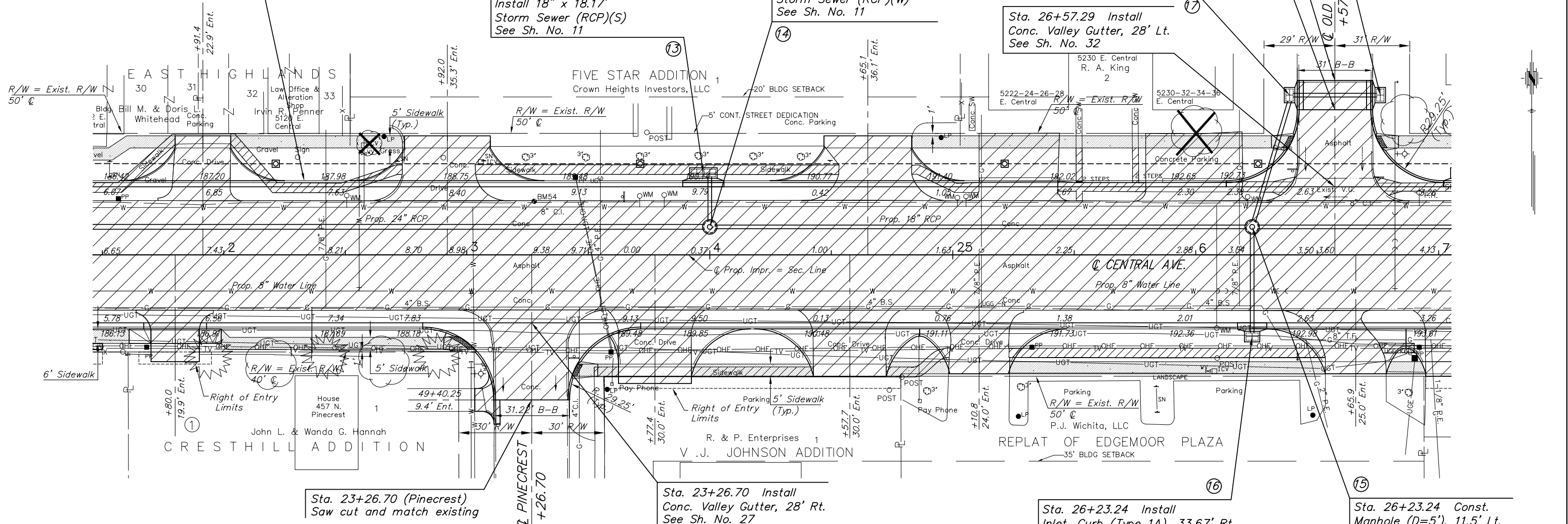
STATE	PROJECT NO.	YEAR	SHEET NO.	SHEETS
KANSAS	87N-0135-01	2005	10	137

Sta. 26+75.97 (Old Manor) Install
 Curb Inlet (Type 1A), 65.75' Lt.
 L=6'-4", W=4'-4"
 Inlet Top = 193.89
 Install 18" x 34.33'
 Storm Sewer (RCP)(W)
 See Sh. No. 11

Sta. 23+97.33 Install
 Curb Inlet (Type 1A), 33.67' Lt.
 L=11'-4", W=4'-4"
 Inlet Top = 190.10
 Install 18" x 18.17'
 Storm Sewer (RCP)(S)
 See Sh. No. 11

Sta. 24+00.00 Const.
 Manhole (D=5'), 11.5' Lt.
 M.H. Top = 190.13
 Install 24" x 354.22'
 Storm Sewer (RCP)(W)
 See Sh. No. 11

Sta. 22+21.92 to Sta. 22+48.11
 Install Curb Castings and 4" PVC
 Pipe. Bring pipe up through the
 downspouts. Cost *Subsidiary* to
 "Sidewalk Construction"(4")(AE).



Sta. 23+26.70 (Pinecrest)
 Saw cut and match existing

Sta. 23+26.70 Install
 Conc. Valley Gutter, 28' Rt.
 See Sh. No. 27

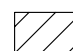

Sta. 26+23.24 Install
 Inlet, Curb (Type 1A), 33.67' Rt.
 L=6'-4", W=4'-4"
 Inlet Top = 192.65
 Install 18" x 41.17'
 Storm Sewer (RCP)(N)
 See Sh. No. 11

Sta. 26+23.24 Const.
 Manhole (D=5'), 11.5' Lt.
 M.H. Top = 192.87
 Install 18" x 219.24'
 Storm Sewer (RCP)(W)
 See Sh. No. 11

UTILITIES

COX COMMUNICATIONS (CABLE)	262-0661
WESTAR (ELECTRIC)	261-6512
KANSAS GAS SERVICE (GAS)	832-3101
SBC (TELEPHONE)	800-870-8390
CITY OF WICHITA WATER & SEWER	262-6000
AQUILA (GAS)	946-0096

LEGEND

-  Pavement Removal
-  Trees to be Removed

H:\CIVIL\03149\dwg\pave\03149PL3.DWG 02/28/2006 02:18:58 PM CST
 KANSAS DEPARTMENT OF TRANSPORTATION
STREET IMPROVEMENT PLAN
STA. 21+50 TO STA. 27+00
 PROJECT NO. 87N-0135-01 SEDGWICK CO.
 M K E C ENGINEERING CONSULTANTS, INC.
 WICHITA, KANSAS

DESIGNED BY: JRA	CHECKED BY: JRA
DRAWN BY: JSB, DPG	DATE: DEC. 2005 SHEET 10 OF 137