

P.I. Southwest Corner Sec. 13, T27S, R1E

1. Found Iron Pipe in Thimble
2. 0.00' Rt., @ Sta. 9+99.93
3. N -0.382, E 999.928
4. No references set

P.I. South Quarter Corner, Sec. 13, T27S, R1E

1. Found Iron Pipe in Thimble
2. 0.00' Rt., @ Sta. 36+53.21
3. N 0.00, E 3653.21
4. No references set

P.I. Southeast Corner, Sec. 13, T27S, R1E

1. Found Thimble
2. 0.00' Rt., @ Sta. 63+14.99
3. N -1.43, E 6314.99
4. No references set

STATE	PROJECT NO.	YEAR	SHEET NO.	SHEETS
KANSAS	87N-0135-01	2005	18	137

Sta. 46+46.37, Const.
Curb Inlet (Type 1A), 49.70' Lt
L=11'-4", W=4'-4"
Inlet Top =
Install 18" x 76.98'
Storm Sewer (RCP)(SW)
See Sh. No. 19

Sta. 47+25.68 Extend
Exist 36" RCP with
36" x 7.8' RCP (E)
into new RCB Wingwall
Connect to exist. RCP
with Conc. Collar
Remove exist. headwall
See Sh. No. 47, 53, 56

Sta. 47+55.05 Construct
4-10' x 5' x 100' RCB w/
Straight Wingwalls, Lt. & Rt.
Br. No. 430400876400090
See Sh. No. 54-56
Remove exist. 2-10'x5'x69' RCB
Remove exist. curb inlets, 22' Rt.

Sta. 48+49.93 Adjust
Exist. Manhole, 16.02' Lt.
Prop. M.H. Top = 178.57
Exist. M.H. Top = 177.42
Plug exist. 12" RCP (N)
and remove exist. curb inlet
See Sh. No. 47

Sta. 48+73.75 Install
Double Gate Gutter Inlet, 45.29' Lt.
Grate Top = 177.51 (E)
Install 18" x 25.67'
Storm Sewer (RCP)(S)
See Sh. No. 21

Sta. 48+71.60 Const.
Manhole (5' Dia.), 15.86' Lt.
Prop. Manhole Top = 178.53
See Sh. No. 21

Sta. 48+71.60 Install
Curb Inlet (Type 1A), 27.63' Rt.
L=6'-4", W=4'-4"
Inlet Top = 177.99
Install 24" x 19.2'
Storm Sewer (RCP)(W)
Into exist. inlet
See Sh. No. 19

Sta. 47+72.25, Remove
Exist. 36" RCP and headwall
Connect pipe into new RCB
wingwall
See Sh. No. 53, 56

Sta. 47+28.46 Adjust
Exist. Manhole, 61.48' Rt.
Prop. M.H. Top = 174.50
Exist. M.H. Top = 177.20
See Sh. No. 47

Sta. 48+47.72 Install
Manhole Top, 25.41' Rt.
On Exist. Curb Inlet
M.H. Top =
See Sh. No. 19

Sta. 48+15.76 Install
Conc. Valley Gutter, 22' Rt.
See Sh. No. 28

Sta. 48+15.76, 53.96' Rt.
Const. Asphalt Hook-up.
See Sh. No. 5

Sta. 48+15.76 (Brookside)
Saw cut and match existing

Sta. 46+74.70 Install
Conc. Valley Gutter, 22.0' Rt.
See Sh. No. 28

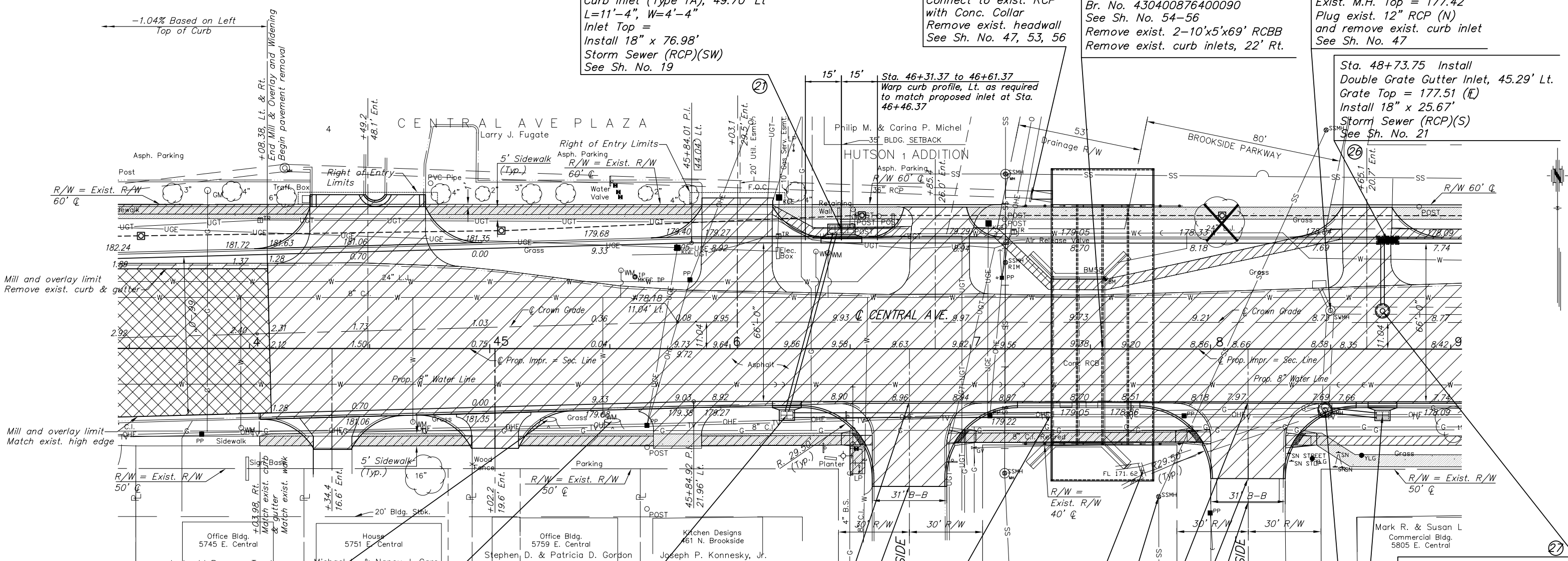
Sta. 46+74.70 (Brookside)
Saw cut and match existing

Sta. 47+33.40
Connect 24" RCP into Prop.
RCB wall, Rt.
See Sh. No. 19, 53

Sta. 46+23.70, Const.
Curb Inlet (Type 1A), 27.64' Rt.
L=6'-4", W=4'-4"
Inlet Top =
Install 24" x 97.87'
Storm Sewer (RCP)(E)
See Sh. No. 19

Sta. 45+51.03, 29.97' Rt.
Grub stump

Sta. 45+24.36, 29.44' Rt.
Grub stump



LEGEND

- Mill and Overlay
- Pavement Removal
- Trees to be Removed

UTILITY ADJUSTMENTS

DESCRIPTION	STATION/OFFSET	Adjustment	REMARKS
Air Release Water Valve	47+14.92, 44.42' Lt.		Adjust

BM #2: Cut "□" at East End of RCBC, North Side of Central
Sta. 47+56.27, 28.95' Lt. Elev. = 178.45

UTILITIES

- COX COMMUNICATIONS (CABLE) 262-0661
- WESTAR (ELECTRIC) 261-6512
- KANSAS GAS SERVICE (GAS) 832-3101
- SBC (TELEPHONE) 800-870-8390
- CITY OF WICHITA WATER & SEWER 262-6000
- AQUILA (GAS) 946-0096

H:\CIVIL\03149\dwg\pave\03149PL7.DWG 02/28/2006 02:24:09 PM CST
KANSAS DEPARTMENT OF TRANSPORTATION
STREET IMPROVEMENT PLAN
STA. 43+50 TO STA. 49+00
PROJECT NO. 87N-0135-01 SEDGWICK CO.
M K E C ENGINEERING CONSULTANTS, INC.
WICHITA, KANSAS
DESIGNED BY: JRA CHECKED BY: JRA
DRAWN BY: JSB, DPG DATE: DEC. 2005 SHEET 18 OF 137