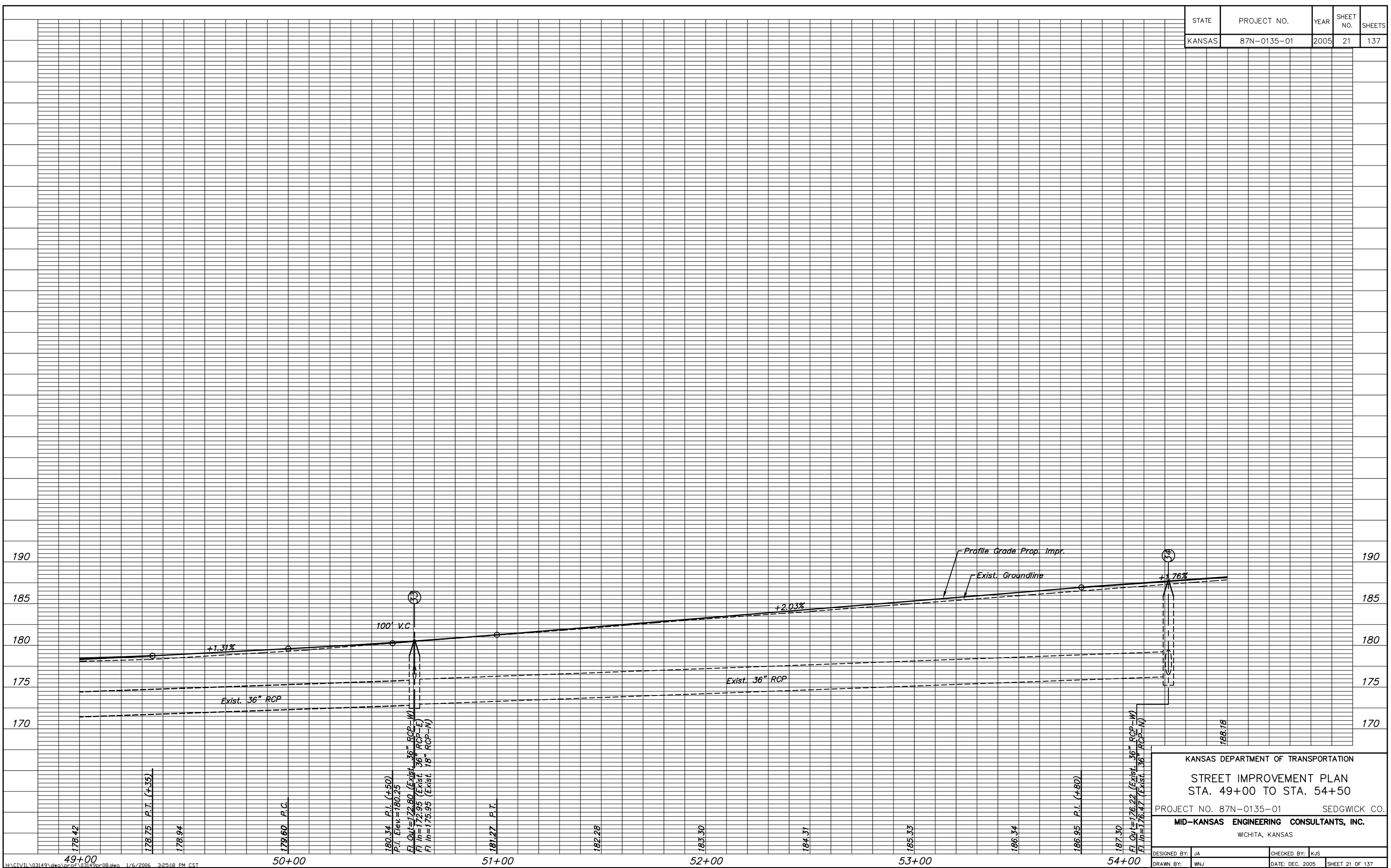


|        |             |      |           |        |
|--------|-------------|------|-----------|--------|
| STATE  | PROJECT NO. | YEAR | SHEET NO. | SHEETS |
| KANSAS | 87N-0135-01 | 2005 | 21        | 137    |



H:\CIVIL\03149\dwg\pcc\03149pcc08.dwg 1/6/2006 3:25:18 PM CST

KANSAS DEPARTMENT OF TRANSPORTATION  
 STREET IMPROVEMENT PLAN  
 STA. 49+00 TO STA. 54+50  
 PROJECT NO. 87N-0135-01 SEDGWICK CO.  
**MID-KANSAS ENGINEERING CONSULTANTS, INC.**  
 WICHITA, KANSAS

|                 |                                 |
|-----------------|---------------------------------|
| DESIGNED BY: JA | CHECKED BY: KJS                 |
| DRAWN BY: WNJ   | DATE: DEC. 2005 SHEET 21 OF 137 |

178.42  
 178.75 P.I. (+35)  
 178.94  
 179.60 P.C.  
 180.34 P.I. (+50)  
 P.I. Elev = 180.25  
 FLOW = 172.80 (EXIST. 36" RCP-W)  
 F.I.M. = 172.95 (EXIST. 36" RCP-E)  
 F.I.H. = 175.95 (EXIST. 18" RCP-N)  
 100' V.C.  
 181.27 P.T.  
 182.28  
 183.30  
 184.31  
 185.33  
 186.34  
 186.95 P.I. (+80)  
 187.30  
 FLOW = 176.22 (EXIST. 36" RCP-W)  
 F.I.M. = 176.27 (EXIST. 36" RCP-N)  
 188.18