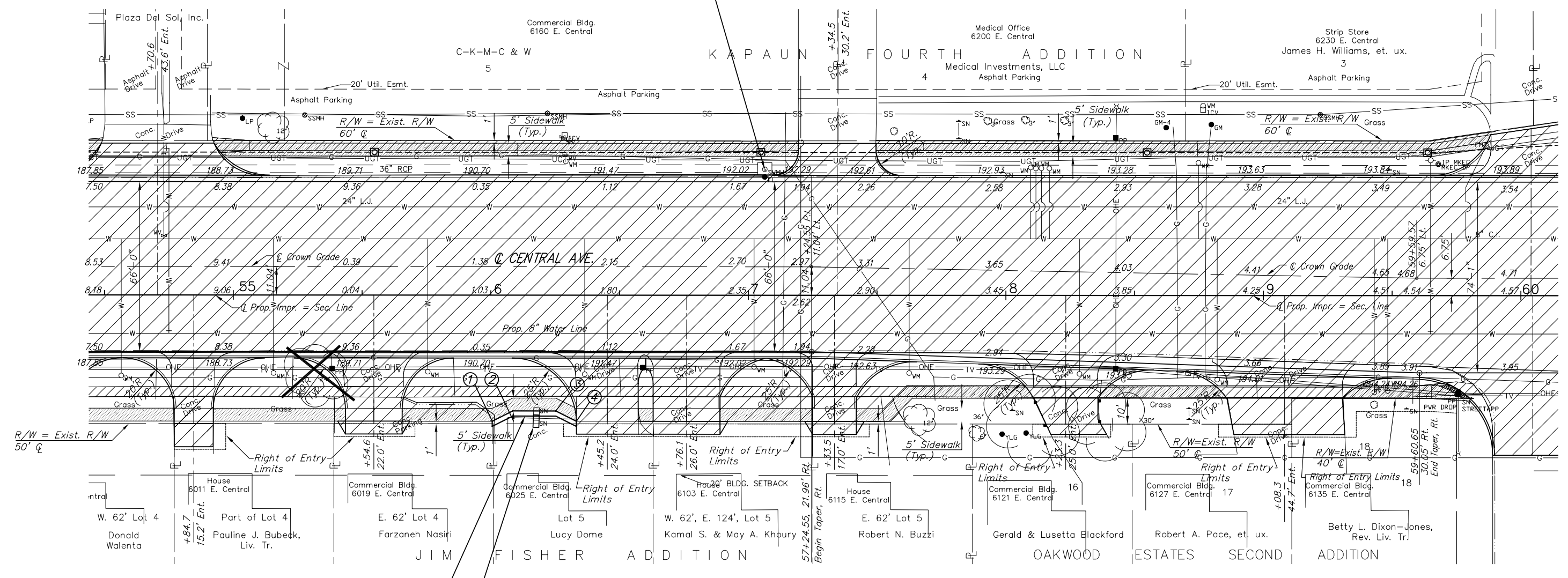


P.I. South Quarter Corner, Sec. 13, T27S, R1E  
 1. Found Iron Pipe in Thimble  
 2. 0.00' Rt., @ Sta. 36+53.21  
 3. N 0.00, E 3653.21  
 4. No references set

P.I. Southeast Corner, Sec. 13, T27S, R1E  
 1. Found Thimble  
 2. 0.00' Rt., @ Sta. 63+14.99  
 3. N -1.43, E 6314.99  
 4. No references set

STATE	PROJECT NO.	YEAR	SHEET NO.	SHEETS
KANSAS	87N-0135-01	2005	22	137

Sta. 57+06.36 Adjust  
 Exist. Inlet Top, Lt.  
 Exist. Top = 191.34  
 Prop. Top = 192.08



Sta. 56+00.55 to Sta. 56+33.26  
 Construct Modular Block Concrete  
 Retaining Wall as shown. See details  
 on sheet 48.

Exist. Sign to be Relocated as shown  
 By Others during construction. The  
 sign base will rest on the top of the  
 Modular Block Wall. Contractor to  
 coordinate work.

UTILITIES

COX COMMUNICATIONS (CABLE)	262-0661
WESTAR (ELECTRIC)	261-6512
KANSAS GAS SERVICE (GAS)	832-3101
SBC (TELEPHONE)	800-870-8390
CITY OF WICHITA WATER & SEWER	262-6000
AQUILA (GAS)	946-0096

LEGEND

	Mill and Overlay
	Pavement Removal
	Trees to be Removed

FACE OF DRYSTACK WALL - 6025 E. CENTRAL

POINT	NORTHING	EASTING	TOP ELEV.	WALK ELEV.	NOTES
1	-50.0466	5600.5228	193.75	192.00±	Match Exist. Landscaping
2	-46.0504	5608.5250	193.75	192.20±	
3	-46.0594	5625.2389	193.75	192.40±	
4	-50.0637	5633.2368	193.75	192.80±	Match Exist. Landscaping

Note: Coordinates and Elevations shall be confirmed in the field.

H:\CIVIL\03149\dwg\pave\03149PL9.DWG 5/30/2006 9:26:05 AM CST  
 KANSAS DEPARTMENT OF TRANSPORTATION  
**STREET IMPROVEMENT PLAN**  
**STA. 54+50 TO STA. 60+00**  
 PROJECT NO. 87N-0135-01 SEDGWICK CO.  
 M K E C ENGINEERING CONSULTANTS, INC.  
 WICHITA, KANSAS

DESIGNED BY: JRA	CHECKED BY: JRA
DRAWN BY: JSB, DPG	DATE: DEC. 2005 SHEET 22 OF 137