

FIGURE 1

Area delineated by the engineer As area prepared for patching (Plan View)

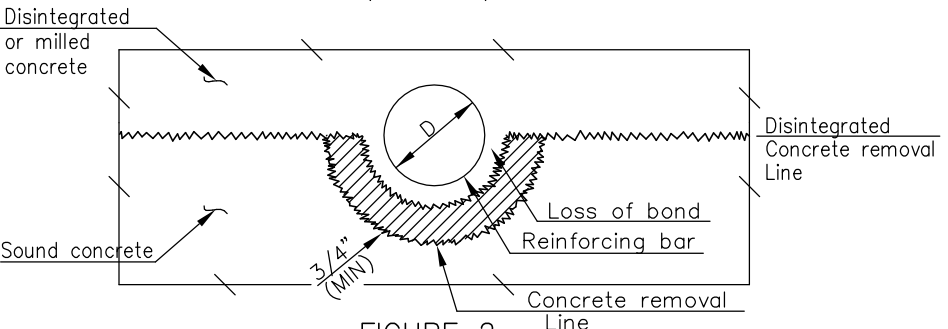


FIGURE 2

Loss of bond with reinforcing steel (Cross-Sectional View)

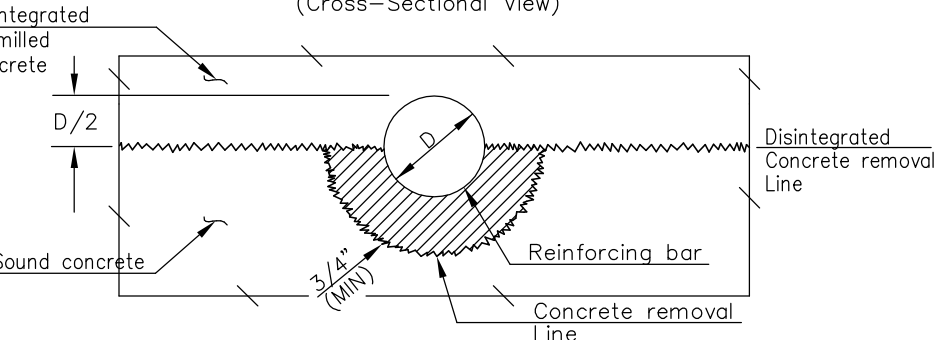


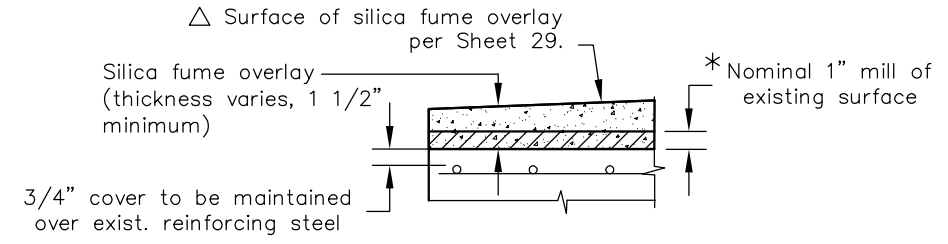
FIGURE 3

More than half of rebar exposed (Cross-Sectional View)

Patching of damaged and debonded reinforcing will be bid per square yard as the measured quantity item "Area Prepared for Patching".

REINFORCEMENT PATCH DETAILS
(Bridge Deck Overlay)

NOTE: Reinforcement exposed or damaged during the milling process or any reinforcement found to be damaged or debonded shall be patched as shown in the above details.



- * Milling thickness may be increased along outside edges of the RCB in order to provide the minimum overlay thickness.
- △ Upon approval of the engineer, the final surface elevations of the RCB overlay may be increased in order to maintain the required cover over the reinforcing steel. It is assumed the existing steel is at a depth of 2" below the existing surface.

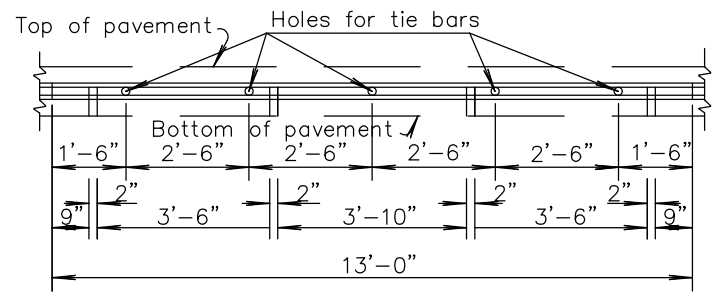
BRIDGE DECK MILLING AND OVERLAY SECTION

Lap lengths are based on a Class B Splice. Use the min. splice length corresponding to the grade of existing reinforcing in the deck.

*MINIMUM REBAR SPLICE LENGTHS	
BAR SIZE	GR. 60
#4	16"
#5	20"
#6	24"
#7	29"
#8	38"
#9	48"
#10	61"
#11	75"

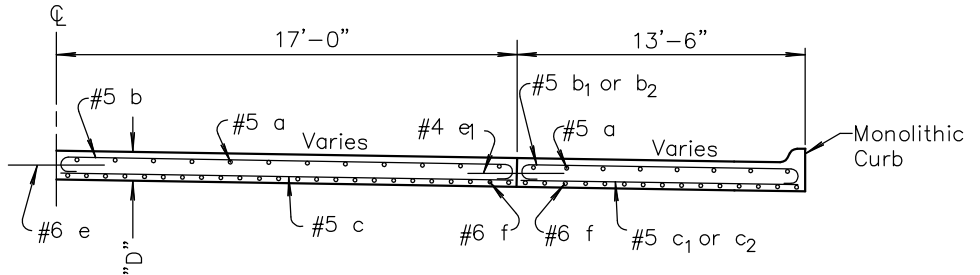
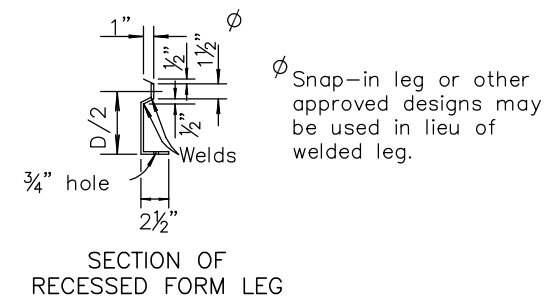
AREA PREPARED FOR PATCHING: This item shall consist of removing unsound concrete and bituminous patches from the bridge deck, cleaning reinforcing bars, filling the removed patched areas with concrete, and preparing the entire area of deck for Silica Fume Overlay. Quantity shown is an estimate of the areas involved. The exact areas shall be determined by tapping, before, during and after chipping operation to assure that all unsound concrete has been removed. See KDOT Specifications.

SUMMARY OF QUANTITY		
ITEM	UNITS	TOTAL
Area Prepared for Patching	S.Y.	



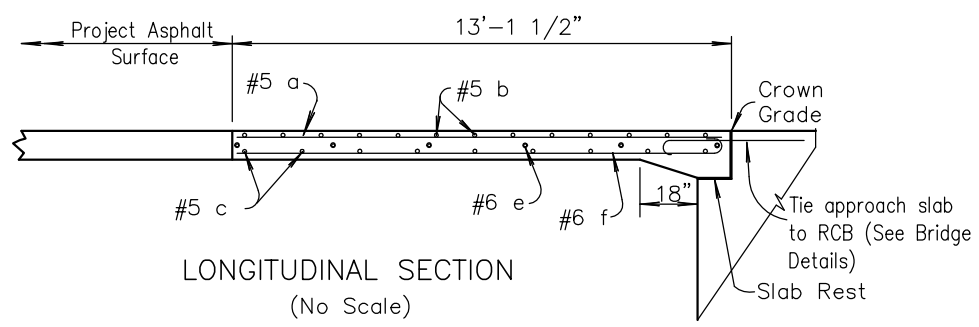
To be used only against forms. Shall not extend through contraction joints.

METAL STRIP FOR LONGITUDINAL CONSTRUCTION JOINT (13'-0")



TYPICAL HALF SECTION (No Scale)

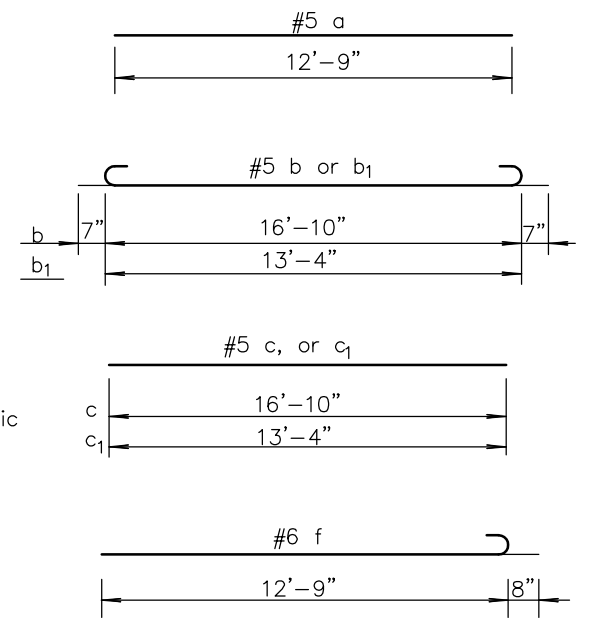
"D" Thickness = 10"



LONGITUDINAL SECTION (No Scale)

GENERAL NOTE

All work shall be done in conformity with the Standard Specifications applicable to the project. The cost of all bars and joint material shown on this sheet is to be included in the bid price for Concrete Approach Slab. At each planned transverse joint location, a 4 to 6 inch wide strip of the pavement surface shall be protected from the texturing operation to provide a transverse textureless surface centered over the joint sawcut. All joints on this project shall be sawed and filled with sealant in accordance with Standard Specifications. The 6 inch edge curb shall be constructed integral with the approach slab shoulder. All materials and work required for this construction shall be Subsidiary to the concrete approach slab. See Sheet 27 for Jointing Details.



BENDING DIAGRAMS

Note: All dimensions are out to out on bars, unless noted otherwise.

H:\CIVIL\03149\dwg\Details\Rd711t.dwg 02/23/2006 03:26:20 PM CST

KANSAS DEPARTMENT OF TRANSPORTATION

MISCELLANEOUS DETAILS FOR CONCRETE BRIDGE APPROACH PAVEMENT AND BRIDGE DECK OVERLAY

MKEC ENGINEERING CONSULTANTS, INC.
WICHITA, KANSAS

DESIGNED BY:	JRA	CHECKED BY:	JRA
DRAWN BY:	DPG	DATE:	DEC 05

SHEET 30 OF 137