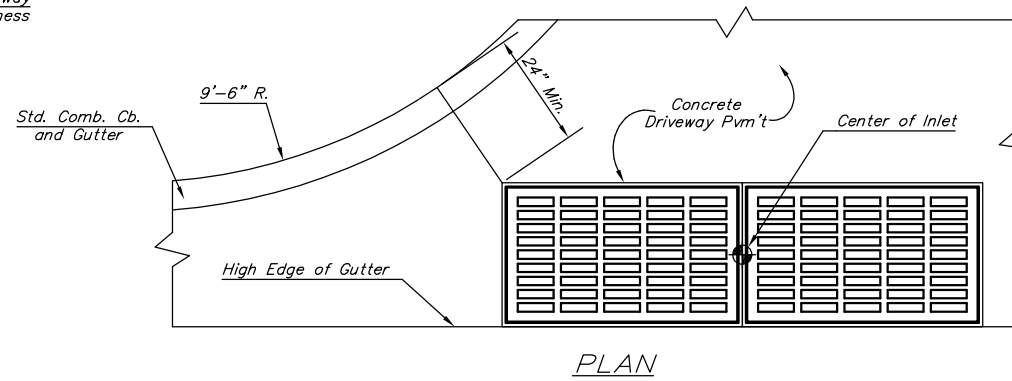
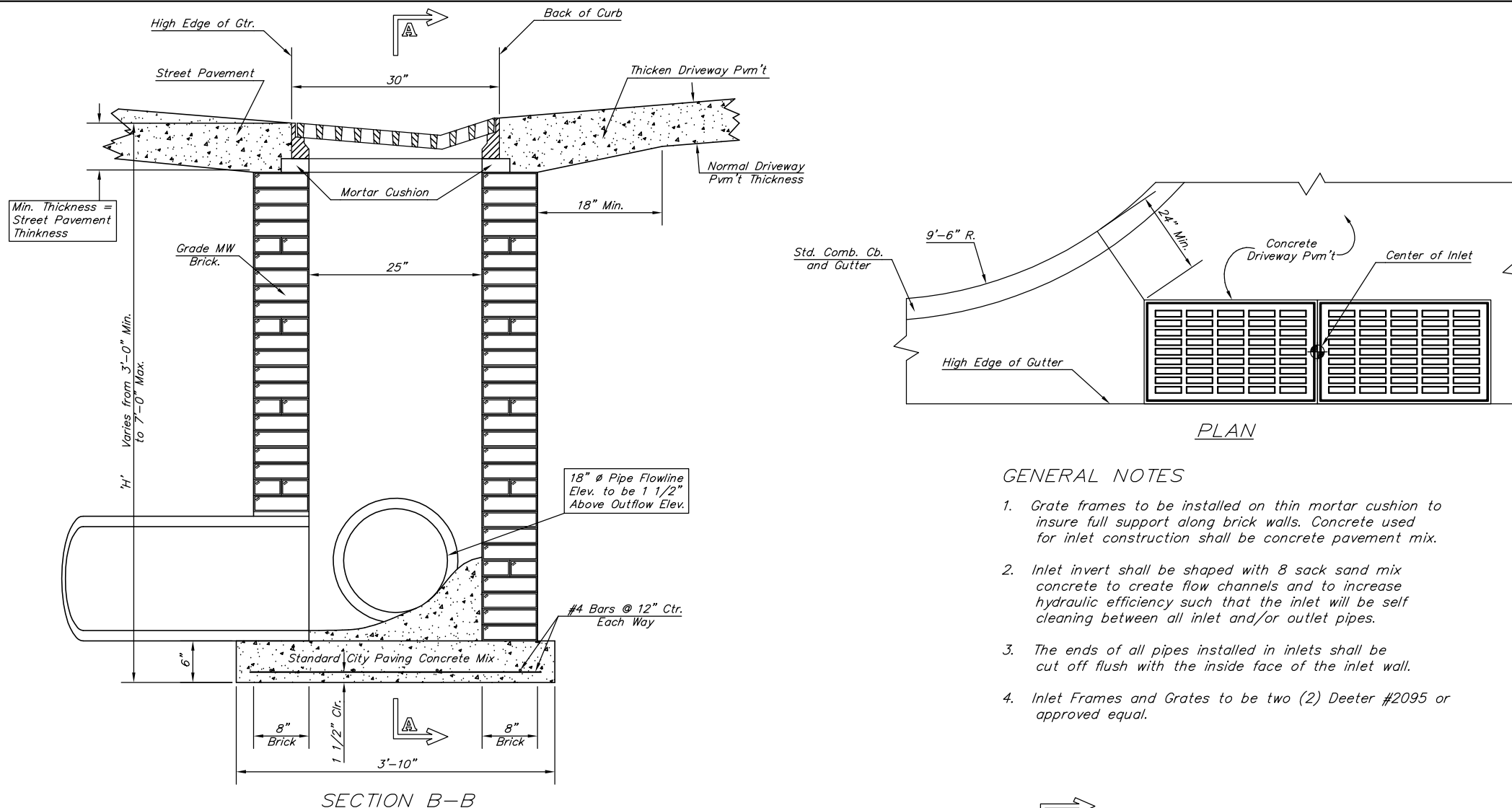
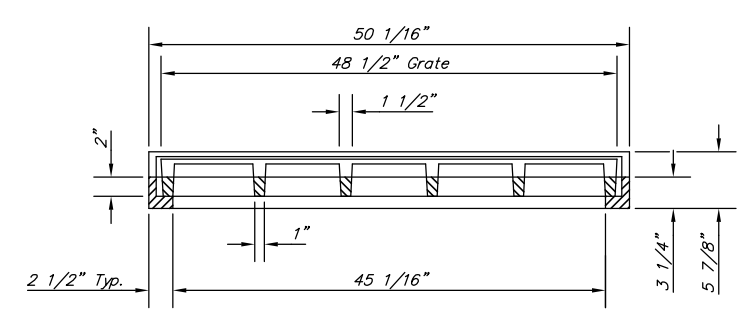
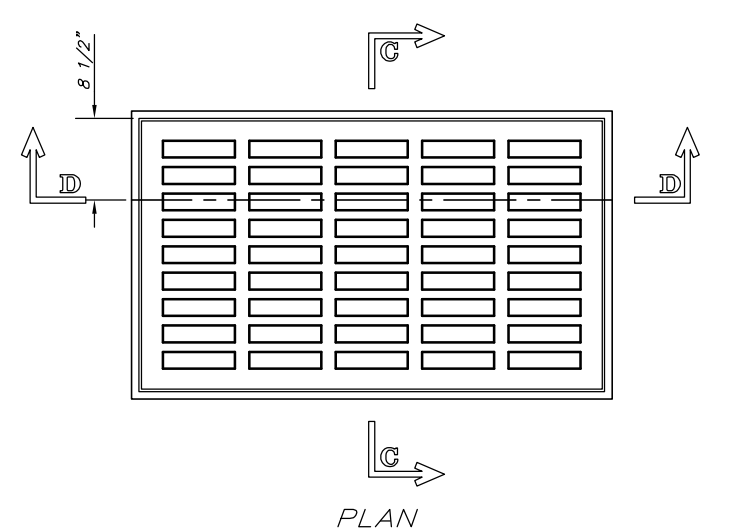


| | | | | |
|--------|--------------|------|-----------|--------|
| STATE | PROJECT NO. | YEAR | SHEET NO. | SHEETS |
| KANSAS | 87 N-0135-01 | 2005 | 41 | 137 |

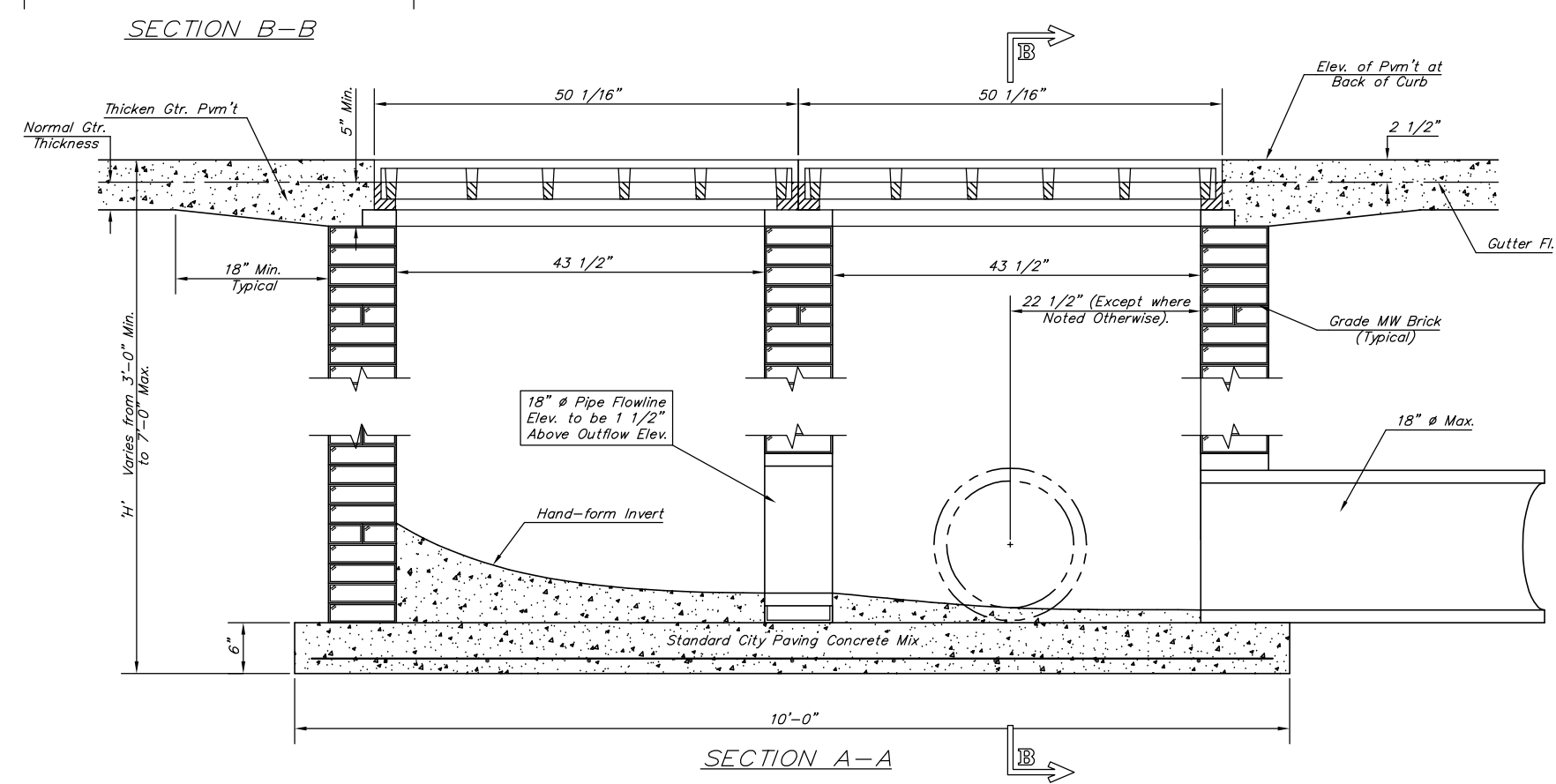


GENERAL NOTES

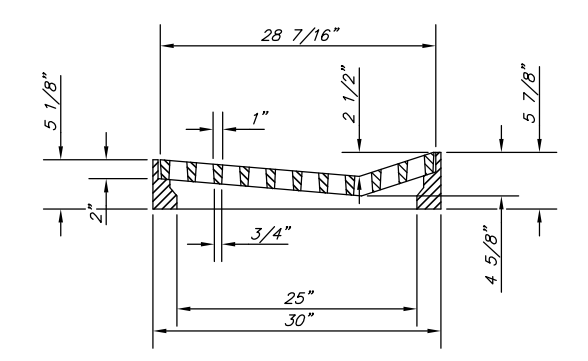
1. Grate frames to be installed on thin mortar cushion to insure full support along brick walls. Concrete used for inlet construction shall be concrete pavement mix.
2. Inlet invert shall be shaped with 8 sack sand mix concrete to create flow channels and to increase hydraulic efficiency such that the inlet will be self cleaning between all inlet and/or outlet pipes.
3. The ends of all pipes installed in inlets shall be cut off flush with the inside face of the inlet wall.
4. Inlet Frames and Grates to be two (2) Deeter #2095 or approved equal.



SECTION D-D



SECTION A-A



SECTION C-C

DEETER #2095 FRAME & GRATE
 TOTAL WEIGHT: 705 lbs.
 (2 Each Required)

H:\CIVIL\03149\dwg\Details\03149Grate.dwg 1/6/2006 3:52:56 PM CST
 KANSAS DEPARTMENT OF TRANSPORTATION
 DRIVEWAY GRATED INLET
 DOUBLE
 PROJECT NO. 87 N-0135-01 SEDGWICK CO.
 M K E C ENGINEERING CONSULTANTS, INC.
 WICHITA, KANSAS
 DESIGNED BY: JRA CHECKED BY: JRA
 DRAWN BY: WNJ DATE: DEC. 2005 SHEET 41 OF 137