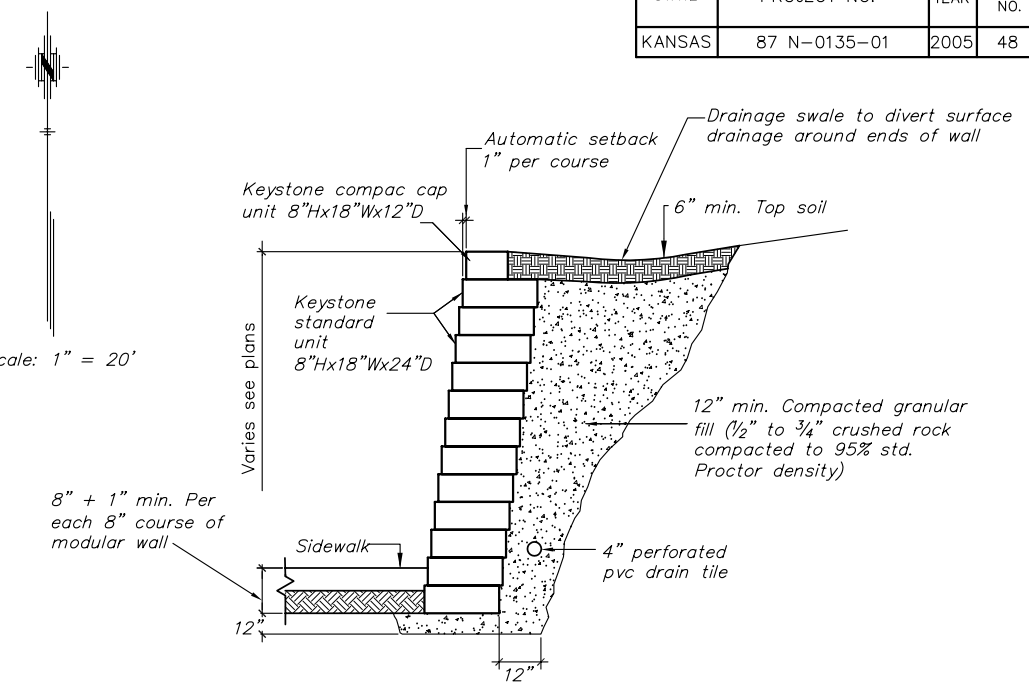
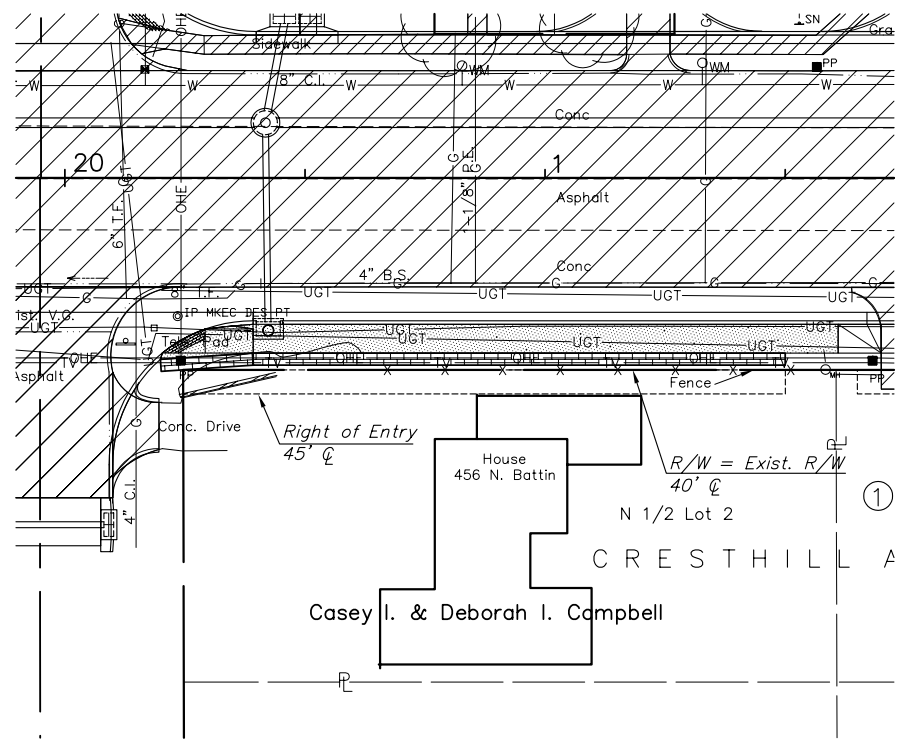
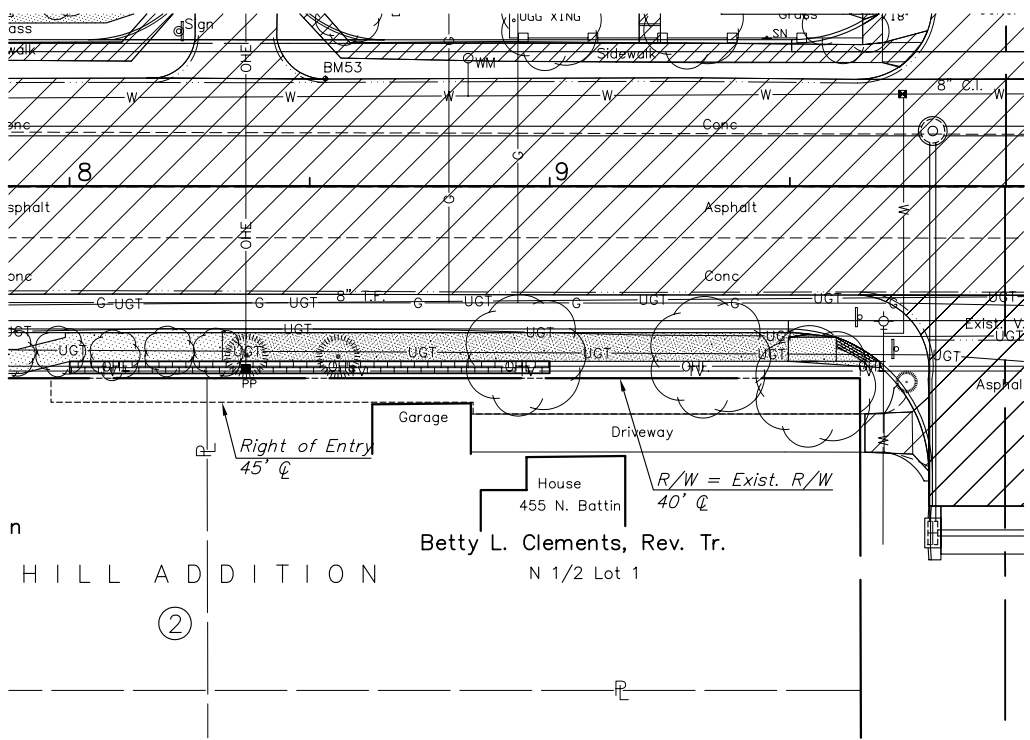


STATE	PROJECT NO.	YEAR	SHEET NO.	SHEETS
KANSAS	87 N-0135-01	2005	48	137



MODULAR CONC. RETAINING WALL

"Retaining Wall" includes perforated pvc drain, compacted granular material, top soil, and keystone units. Wall units shall be of the model and manufacture shown or approved equal. The color shall be "Brick Red."

4" perforated pvc drain tile to discharge at the east and west ends of the retaining wall.

PLAN - RETAINING WALLS
SCALE: 1" = 20'

PROFILE - RETAINING WALLS
HORIZONTAL SCALE: 1" = 20'
VERTICAL SCALE: 1" = 1'

