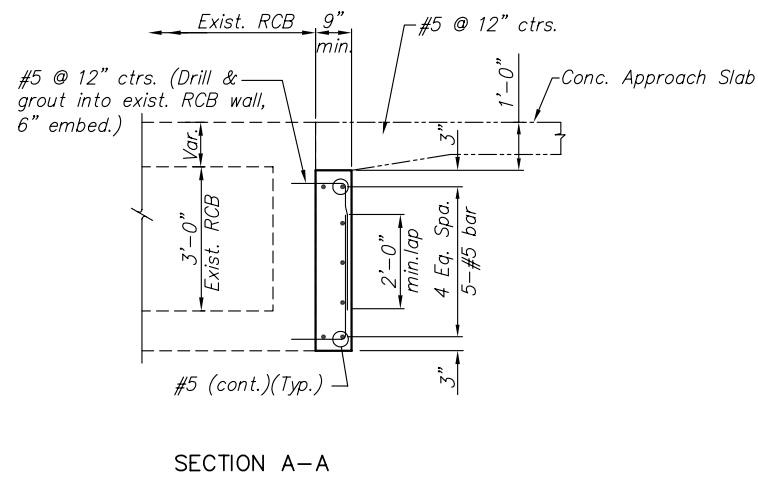
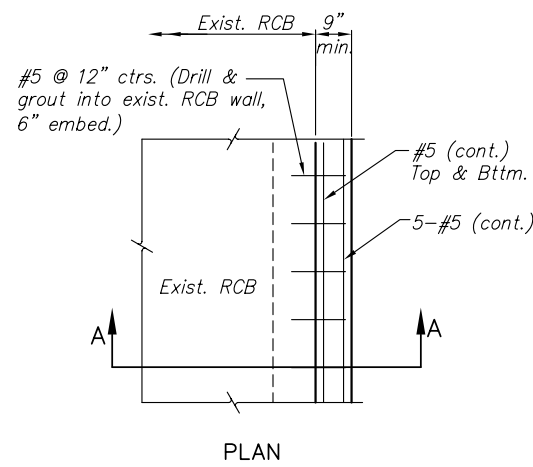
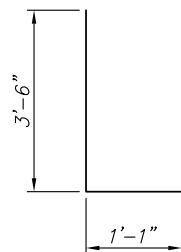


FHWA REG NO.	STATE	PROJECT NO.	YEAR	SHEET NO	TOTAL SHEETS
7	KANSAS	87 N-0135-01	2005	53	137



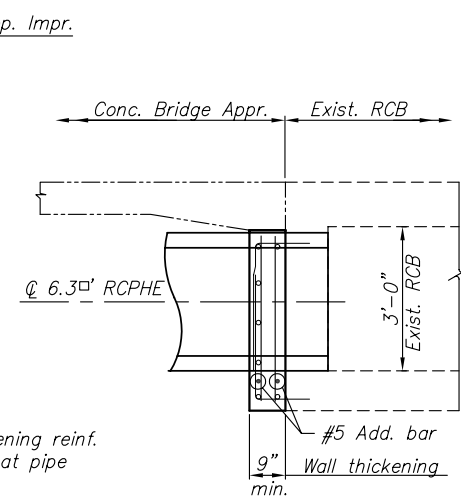
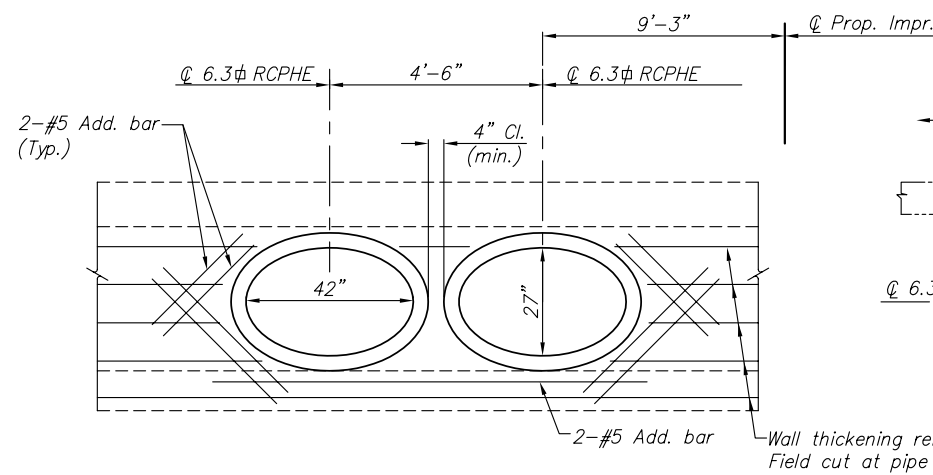
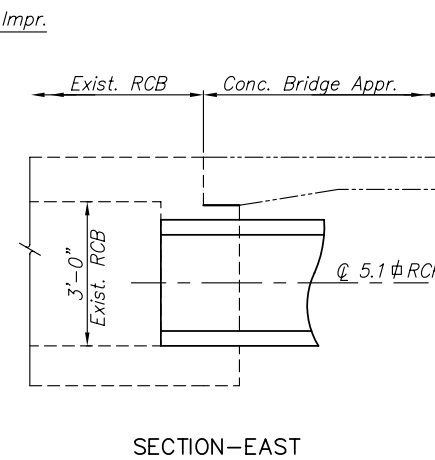
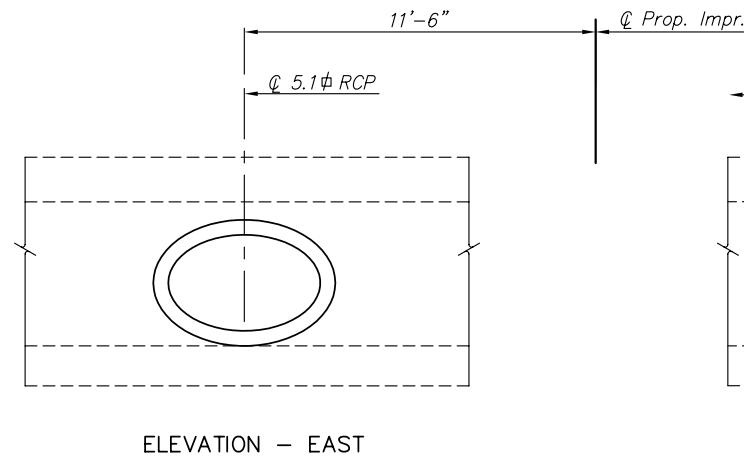
TYPICAL EXIST. RCB WALL THICKENING
(For Approach Slab Rest)
Sta. 15+01.73

Note: Prior to constructing slab rest the Contractor shall sandblast the contact surface of the existing concrete.



BENDING DIAGRAM

Minimum Splice Lengths	
#3	1'-2"
#4	1'-6"
#5	2'-0"

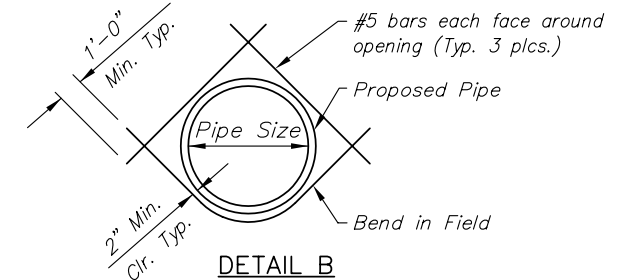
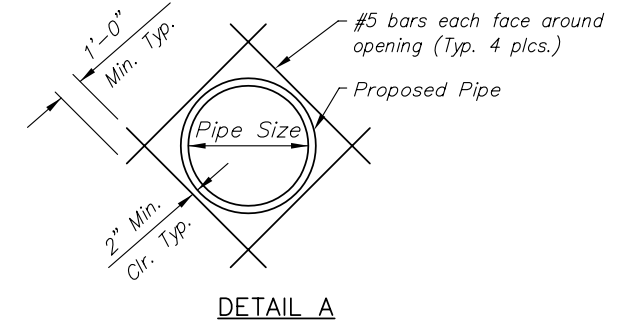


ELEVATION - WEST

SECTION - WEST

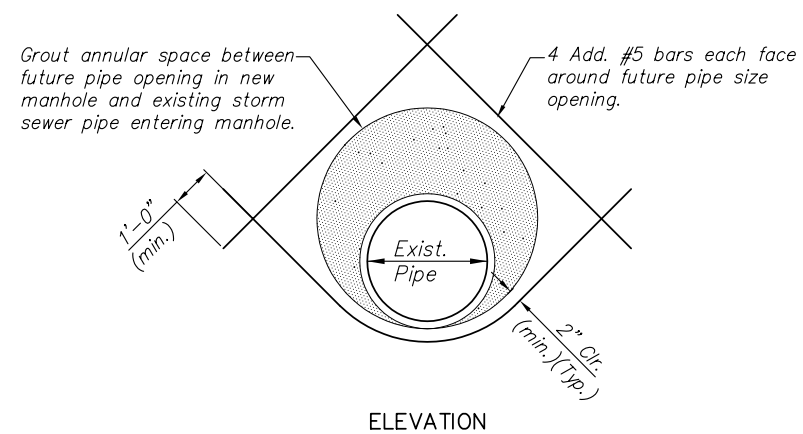
STORM SEWER DETAILS @ EXIST. RC GRADE BOX
Sta. 15+01.73, Lt.

GENERAL NOTE:
All concrete pipe connections to structures, new or existing, shall be made with non-shrink grout. Holes cut into existing structures for concrete pipe connections shall be as small as practical to facilitate the installation of pipe.



TYPICAL WALL OPENING DETAILS FOR PIPES INTO NEW STRUCTURES

Diagonal reinforcing shall be added as shown in Detail "A" or "B" depending upon the pipe location. The reinforcing shall be bent as required to maintain 2" clearance to the concrete face. This reinforcing shall not be paid for directly but shall be subsidiary to "Reinforcing Steel (Gr. 60)". The reinforcing shall be cut or bent to provide 2" clearance to the opening. No deduction in the reinforcing steel or concrete quantities has been made for the pipe openings.



KNOCKOUT FOR FUTURE STORM SEWER PIPE
STA. 10+88.37, Lt.
New manhole constructed with opening of size and location listed in "Schedule of Inlets and Manholes".

H:\CIVIL\03149\dwg\RCB\03149mis.dwg 12/8/2003 2:51:18 PM CST				
2				
1				
NO.	DATE	REVISIONS	BY	APP'D
KANSAS DEPARTMENT OF TRANSPORTATION				
MISCELLANEOUS R.C.B. DETAILS AND STORM SEWER DETAILS				
PROJ. NO. 87 N-0135-01			SEDGWICK CO.	
MKEC ENGINEERING CONSULTANTS, INC. WICHITA, KANSAS				
DESIGNED BY:		CHECKED BY:		
DRAWN BY:		DATE:		SHEET 53 OF 137