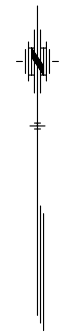
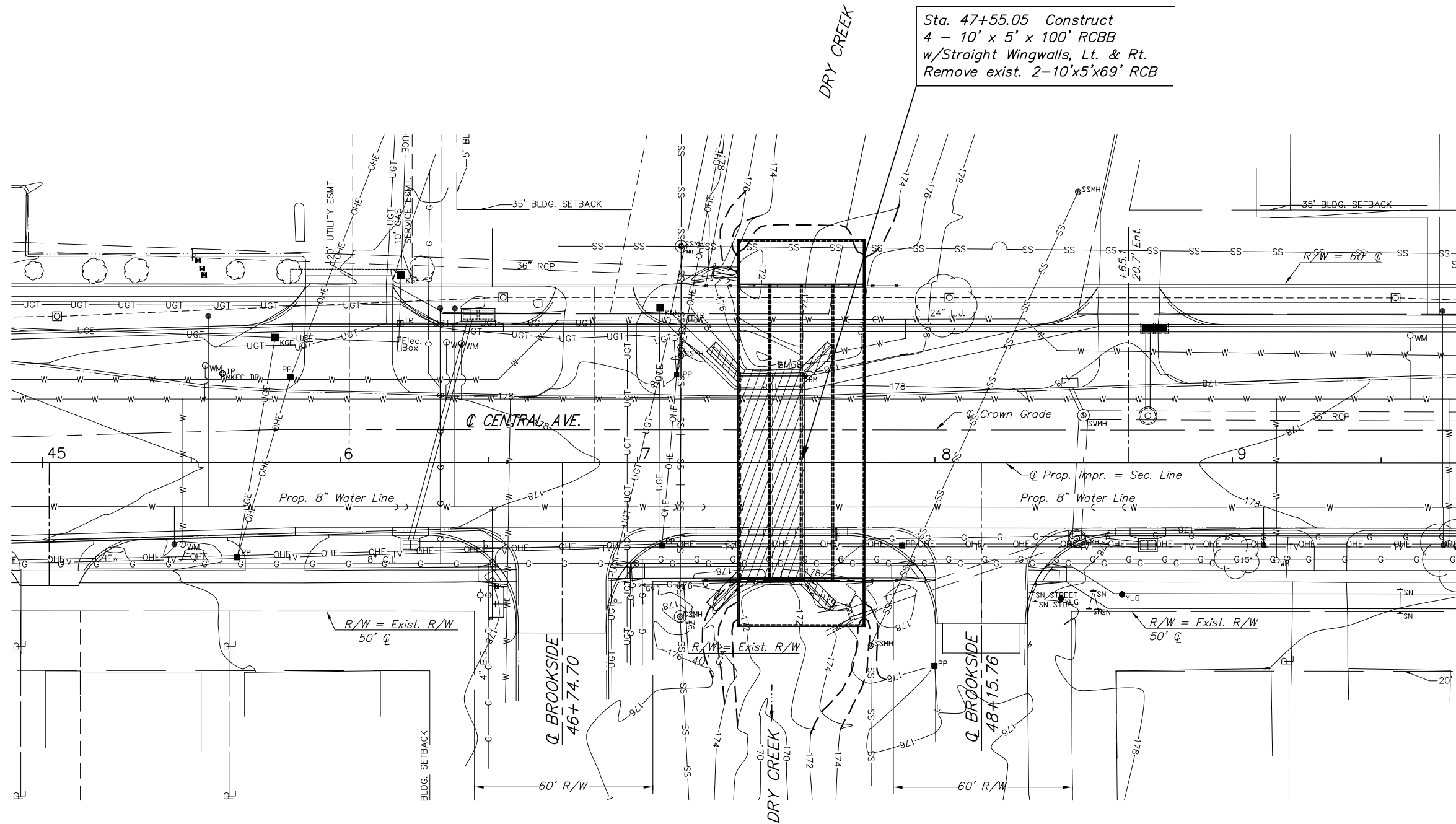


P.I. South Quarter Corner, Sec. 13, T27S, R1E  
 1. Found Iron Pipe in Thimble  
 2. 0.00' Rt., @ Sta. 36+53.21  
 3. N 0.00, E 3653.21  
 4. No references set

P.I. Southeast Corner, Sec. 13, T27S, R1E  
 1. Found Thimble  
 2. 0.00' Rt., @ Sta. 63+14.99  
 3. N -1.43, E 6314.99  
 4. No references set

STATE	PROJECT NO.	YEAR	SHEET NO.	SHEETS
KANSAS	87N-0135-01	2005	54	137



SCALE



Contour Interval = 2'

**Note:**  
 Install 18" of Light Stone Riprap on Geotextile fabric over all disturbed channel slopes and bottom.

LEGEND

- Removal
- Existing Contours
- Proposed Countours

DRAINAGE DATA

Drainage Area	467.50 acre
Design Frequency	100 Yr.
Design Discharge (Qdes)	1470 cfs
Design High Water Elevation (HW = x.xx Ft.)	1365.11
Overtopping Elevation	1366.3
Overtopping Discharge	N/A cfs
Overtopping Frequency	500± Yr.
Historic High Water Elevation	Unknown

UTILITIES

COX COMMUNICATIONS (CABLE)	262-0661
WESTAR (ELECTRIC)	261-6512
KANSAS GAS SERVICE (GAS)	832-3101
SBC (TELEPHONE)	800-870-8390
CITY OF WICHITA WATER & SEWER	262-6000
AQUILA (GAS)	946-0096

BM #3: "□" in the lightpole  
 Sta. 53+41.55, 67.87' Lt. Elev. = 187.08

H:\CIVIL\03149\dwg\RCB\3149CON2.dwg 1/11/2006 9:33:37 AM CST

KANSAS DEPARTMENT OF TRANSPORTATION

CONTOUR MAP  
 RCB STA. 47+55.05

PROJECT NO. 87N-0135-01 SEDGWICK CO.

M K E C ENGINEERING CONSULTANTS, INC.  
 WICHITA, KANSAS

DESIGNED BY:	JRA	CHECKED BY:	JRA
DRAWN BY:	DPG	DATE:	DEC 05

SHEET 54 OF 137