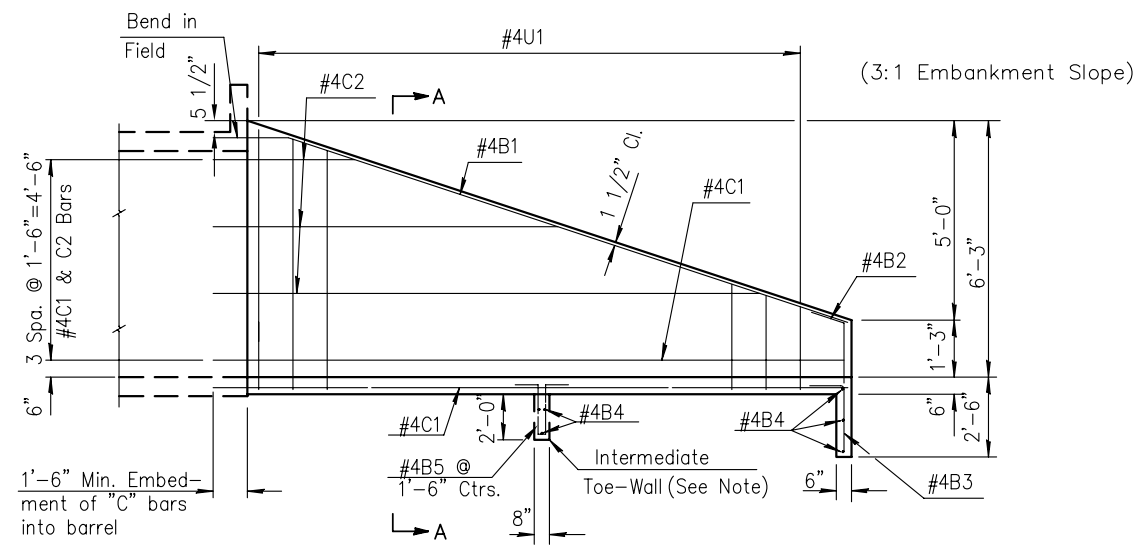
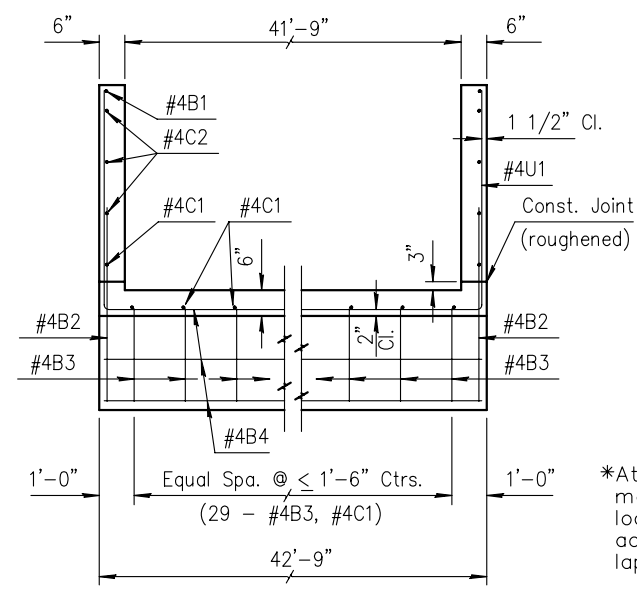


STATE	PROJECT NO.	YEAR	SHEET NO.	TOTAL SHEETS
KANSAS	87 N-0135-01	2005	56	137

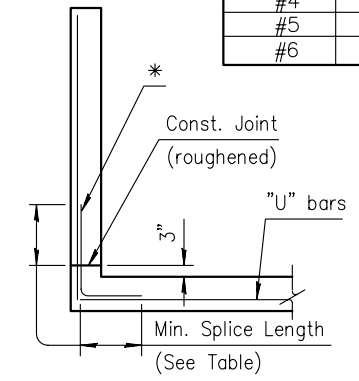


ELEVATION OF WINGWALL

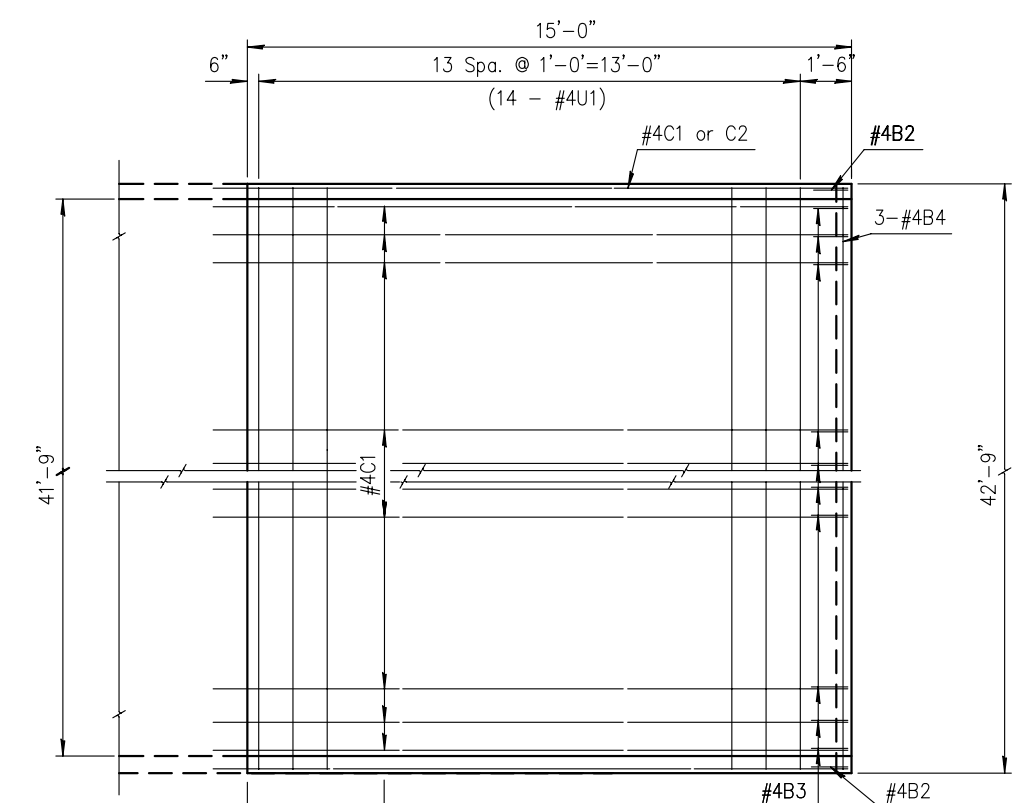


Section A-A

MIN. SPLICE LENGTHS	
#4	1'-4"
#5	1'-8"
#6	2'-0"



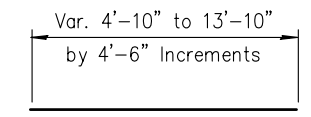
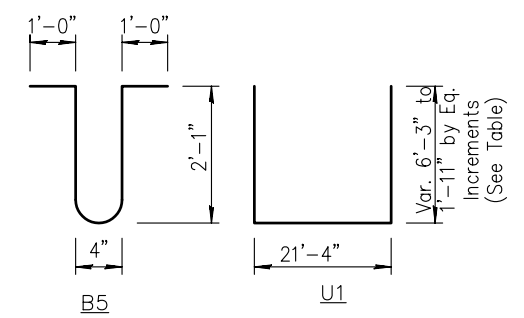
*At Contractors option, straight bars and bent bars may be substituted for "U" bars and spliced at locations shown. No allowance will be made for additional steel required. See table for required lap length.



PLAN OF WINGWALLS

NOTE: Wingwall floor and toewall shall be constructed with the RCB floor. Wingwalls to be constructed with RCB walls.

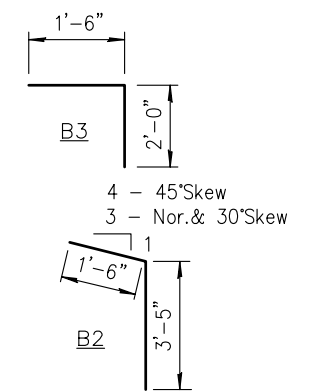
NOTE: Space Weepholes to clear reinforcing steel. See "RCB Auxiliary Details" sheet for additional weephole details.



C2
(Cut two each length)

BENDING DIAGRAMS

All dimensions are out to out of bars.



* See Bending Diagram

NOTE: Reinforcing Bar List is for both wings at one end of box only.	#4 B1		#4 B2 *		#4 B3 *		#4 B4		#4 B5 *		#4C1		#4C2		#4U1 *	
	No.	Length	No.	Length	No.	Length	No.	Length	No.	Length	No.	Length	No.	Length	No.	Length
0° Skew	2	17'-3"	2	4'-11"	29	3'-6"	3	42'-5"	NA	6'-4"	31	16'-4"	6	*	14	*

WINGWALL QUANTITIES (One End Only)	
Grade 31 Concrete (AE)	15.5 CY.
Reinforcing Steel (Epoxy Coated)	1030 Lbs.

Quantities listed are included in the Summary of Quantities shown on the RCB.

H:\CIVIL\03149\dwg\RCB\4-10X5RCBWING.DWG 12/9/2003 10:58:25 AM CST

NO.	DATE	REVISIONS	BY	APP'D
2				
1				

KANSAS DEPARTMENT OF TRANSPORTATION
Sta. 47+55.05

STRAIGHT WINGWALLS
5 Ft. Rise (0° Skew)

PROJ. NO. 87 N-0135-01 SEDGWICK CO.

MKEC ENGINEERING CONSULTANTS, INC.
WICHITA, KANSAS

DESIGNED BY:	CHECKED BY:
DRAWN BY:	DATE:

SHEET 56 OF 137