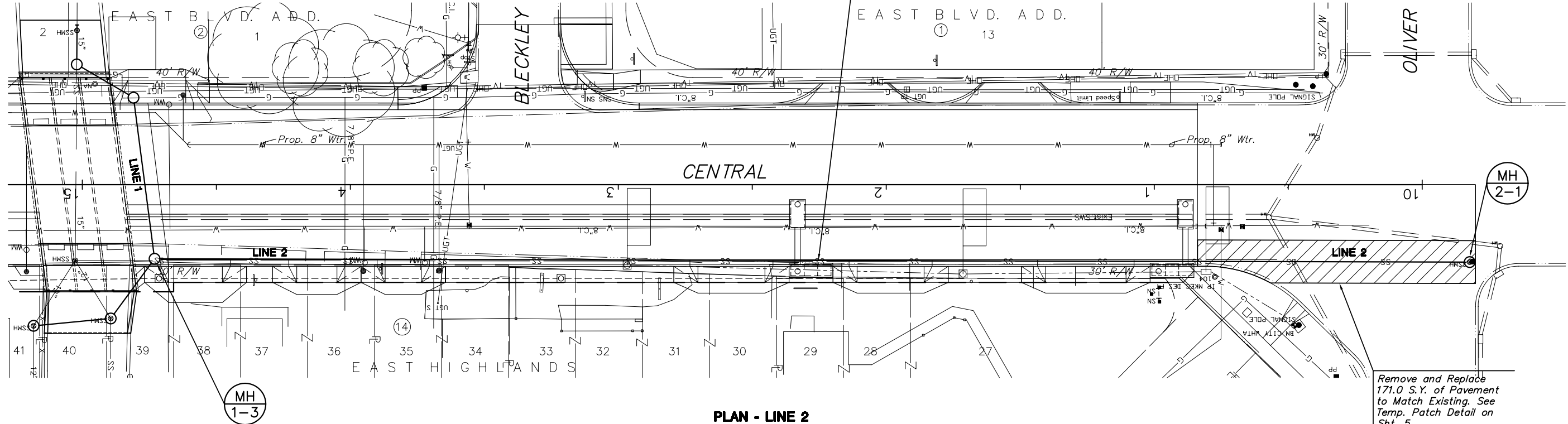


STATE	PROJECT NO.	YEAR	SHEET NO.	SHEETS
KANSAS	87N-0135-01	2005	65	137

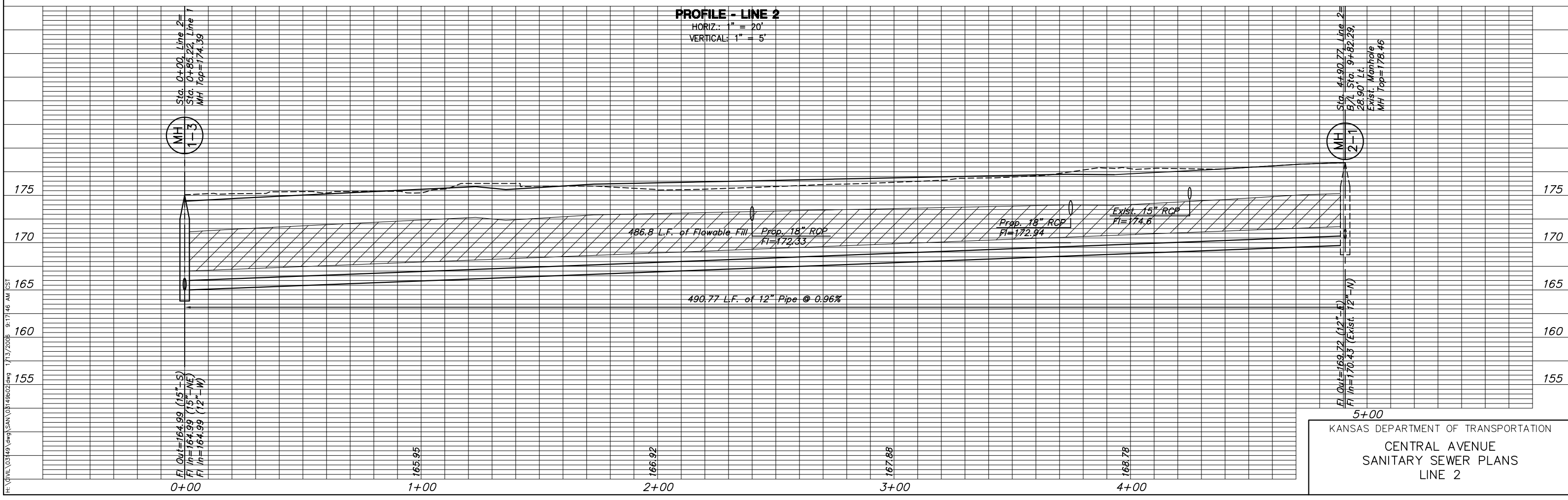
Notes:
 Existing lines not remaining in service shall be abandoned in place or removed. All open ends of pipe shall be plugged. See Sh. No. 47.
 Existing manhole conflicting with new construction shall be removed.

Remove and Replace existing 8" Sanitary Sewer and Replace with 12" Sanitary Sewer as shown.



PLAN - LINE 2
 SCALE: 1" = 20'

PROFILE - LINE 2
 HORIZ.: 1" = 20'
 VERTICAL: 1" = 5'



5+00
 KANSAS DEPARTMENT OF TRANSPORTATION
 CENTRAL AVENUE
 SANITARY SEWER PLANS
 LINE 2

H:\P\1034343.dwg (SAA) 01/14/2005 9:17:46 AM CST
 1/13/2005 1/13/2005