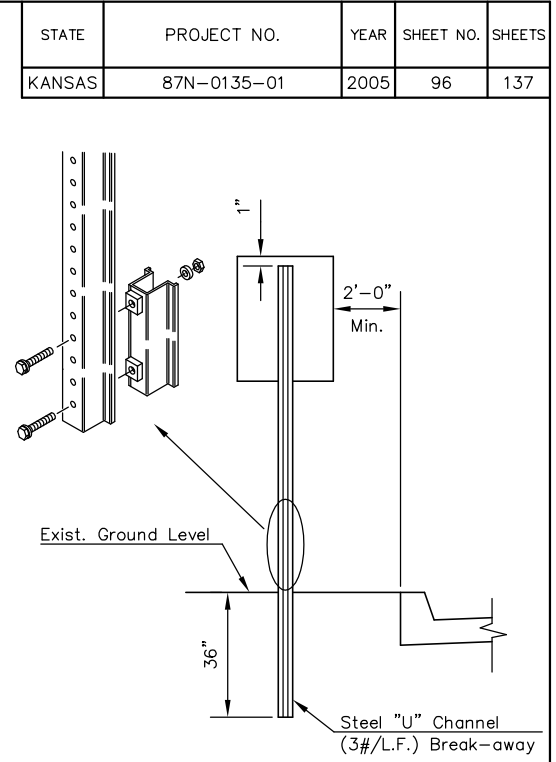
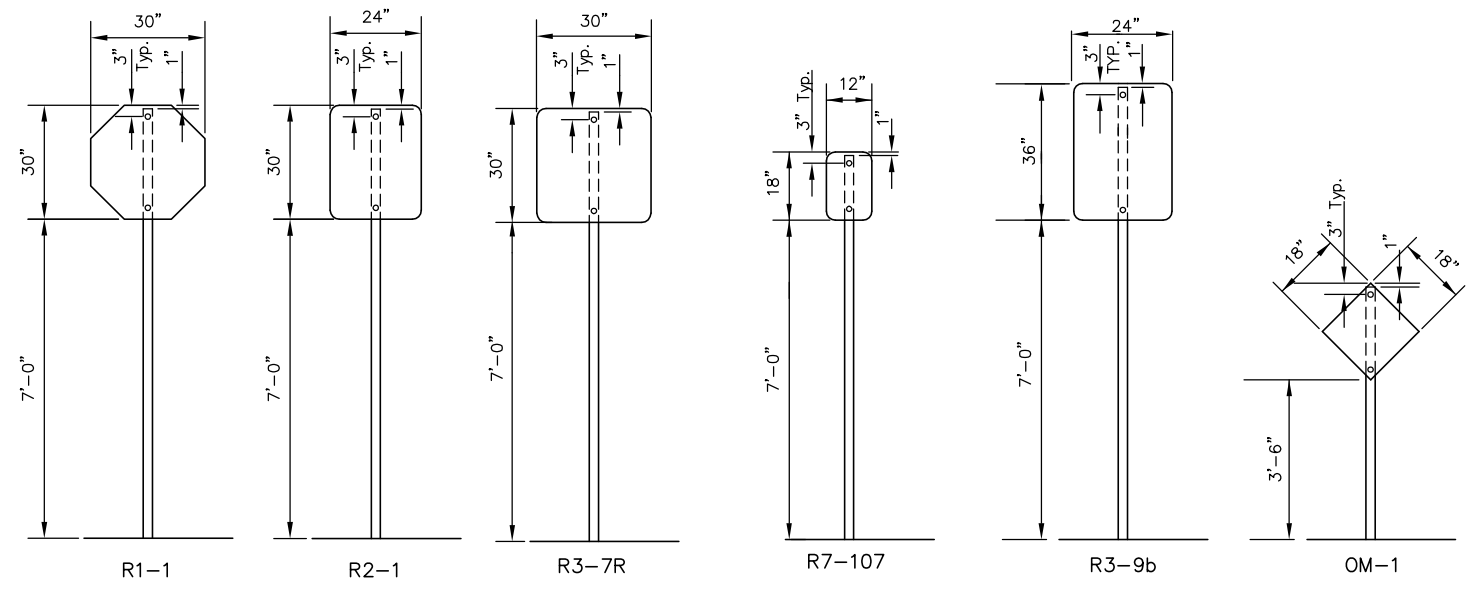


TRAFFIC CONTROL SIGNS & SIGN POST													
Station	Location from C	Classification - Each										Sign Post Length	
		R1-1	R2-1	R3-7R	R3-9B	R7-107R	OM-1	SNS*	Breakaway 1-3/4"x1-3/4"	"U"-Channel			
Central													
14+40	Rt.				1							11'	
16+15	Rt.											8.5'	
16+35	Lt.					1						8.5'	
20+40	Lt.				1							11'	
24+30	Rt.				1							11'	
32+23	Lt.				1							11'	
38+10	Lt.			1								10.5'	
41+25	Rt.				1							11'	
49+75	Lt.				1							11'	
51+50	Rt.				1							11'	
59+00	Lt.				1							11'	
60+29	Lt.								1			6.5'	
61+00	Lt.											10.5'	
62+20	Rt.	1		1								10.5'	
Bleckley													
49+53	Lt.												
49+58	Rt.	1										10.5'	
Harding													
49+58	Lt.												
49+58	Rt.	1										10.5'	
Battin													
49+57	Rt.	1										10.5'	
49+58	Lt.												
50+44	Rt.												
50+46	Lt.	1										10.5'	
Pinecrest													
49+43	Rt.	1										10.5'	
49+57	Lt.												
Old Manor													
50+46	Rt.												
50+51	Lt.	1										10.5'	
Parkwood													
49+53	Rt.	1										10.5'	
49+59	Lt.												
Carriage Pkwy													
50+61	Rt.												
50+66	Lt.	1										10.5'	
Brookside Pkwy													
49+57	Rt.	1										10.5'	
49+58	Lt.												
49+53	Rt.	1										10.5'	
49+59	Lt.												
Hillcrest													
49+53	Rt.	1										10.5'	
49+58	Lt.												
Total		11	1	2	8	2	1					235.5'	

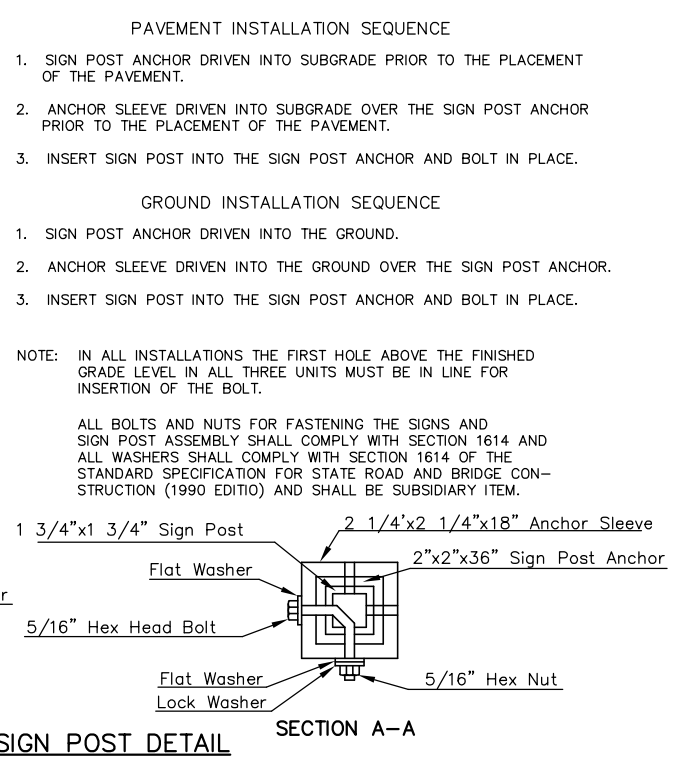
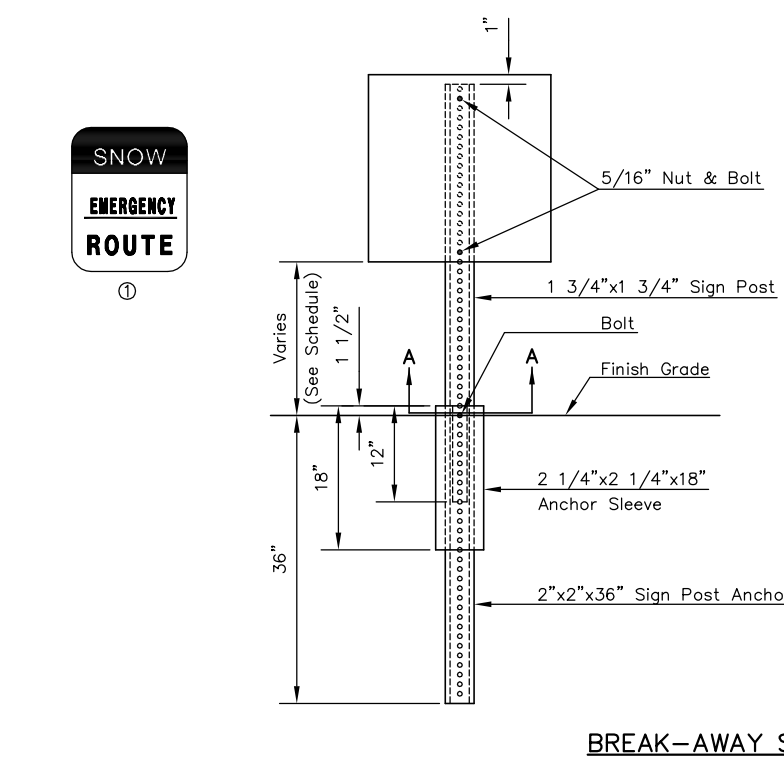


SIGN POST LENGTH SUMMARY	
BREAKAWAY SIGN POST:	
1 3/4"x1 3/4"x LENGTH	EACH
6.5'	1
10.5'	14
11'	8
2-1/4"x2-1/4"x18"	23
2"x2"x36"	23
U-CHANNEL	
LENGTH	EACH
STUBS 3'	2
POSTS 8.5'	2
POSTS 9'	
POSTS 9-1/2'	
POSTS 11'	

RECAPITULATION OF MATERIALS		
ITEMS	TOTAL	UNIT
Sign Face, (High Intensity HA Reflective Sheeting)	139.50	S.F.
Steel "U" Channel Sign Post	17.00	L.F.
Steel "U" Channel Sign Post Stub	6.00	L.F.
Breakaway Sign Post, 1-3/4" x 1-3/4"	218.5	L.F.
Breakaway Anchor Sleeve, 2-1/4" x 2-1/4" x 18"	34.5	L.F.
Breakaway Sign Post Anchor, 2" x 2" x 36"	69.0	L.F.

RECAPITULATION OF MATERIALS		
BID ITEMS	TOTAL	UNIT
Signing	LUMP SUM	L.S.

SIGN DESCRIPTION			
CLASSIFICATION	TYPE	SIZE	AREA
R1-1	STOP SIGN	30"x30"	6.25 SQ. FT.
R2-1	SPEED LIMIT	24"x30"	5.00 SQ. FT.
R3-7R	RT. LANE MUST TURN RT.	30"x30"	6.25 SQ. FT.
R3-9B	TWO WAY LEFT TURN ONLY	24"x36"	6.00 SQ. FT.
R7-107	NO PARKING BUS STOP	12"x18"	1.50 SQ. FT.
OM-1	OBJECT MARKER TYPE 1	18"x18"	2.25 SQ. FT.



NOTE: ALL LETTER, NUMBER, & SYMBOL SIZES, SPACING, & COLORS AND THE SIGN COLORS SHALL CONFORM TO THE CURRENT "MANUAL ON UNIFORM TRAFFIC CONTROL DEVICES."
ALL SIGN MATERIAL TO BE 0.080" ALUMINUM.

H:\CIVIL\03149\dwg\Details\Sign\14.dwg 06/22/2006 04:00:17 PM CST
KANSAS DEPARTMENT OF TRANSPORTATION

SIGNING DETAILS

PROJECT NO. 87N-0135-01 SEDGWICK CO.
MKEC ENGINEERING CONSULTANTS, INC.
WICHITA, KANSAS

DESIGNED BY: JRA CHECKED BY: JRA
DRAWN BY: JSM DATE: DEC 05 SHEET 96 OF 137