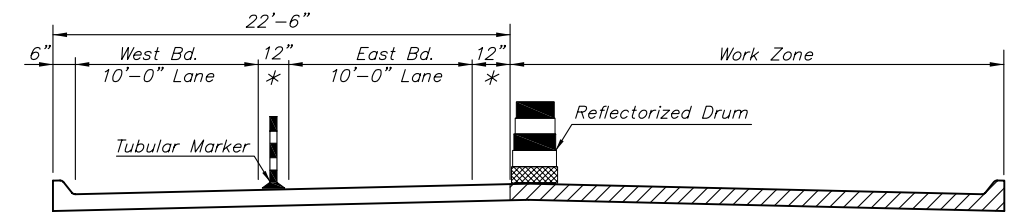
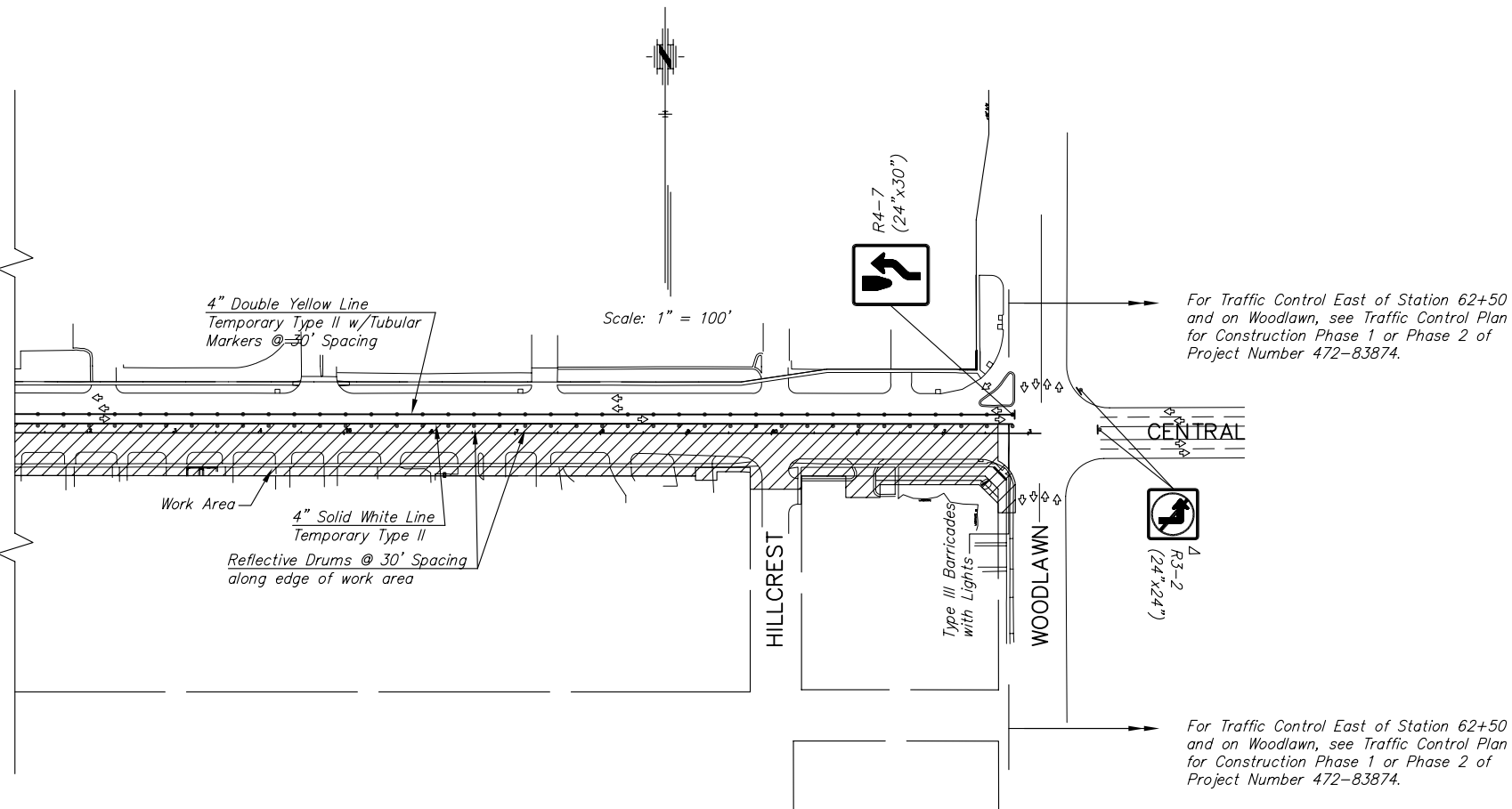
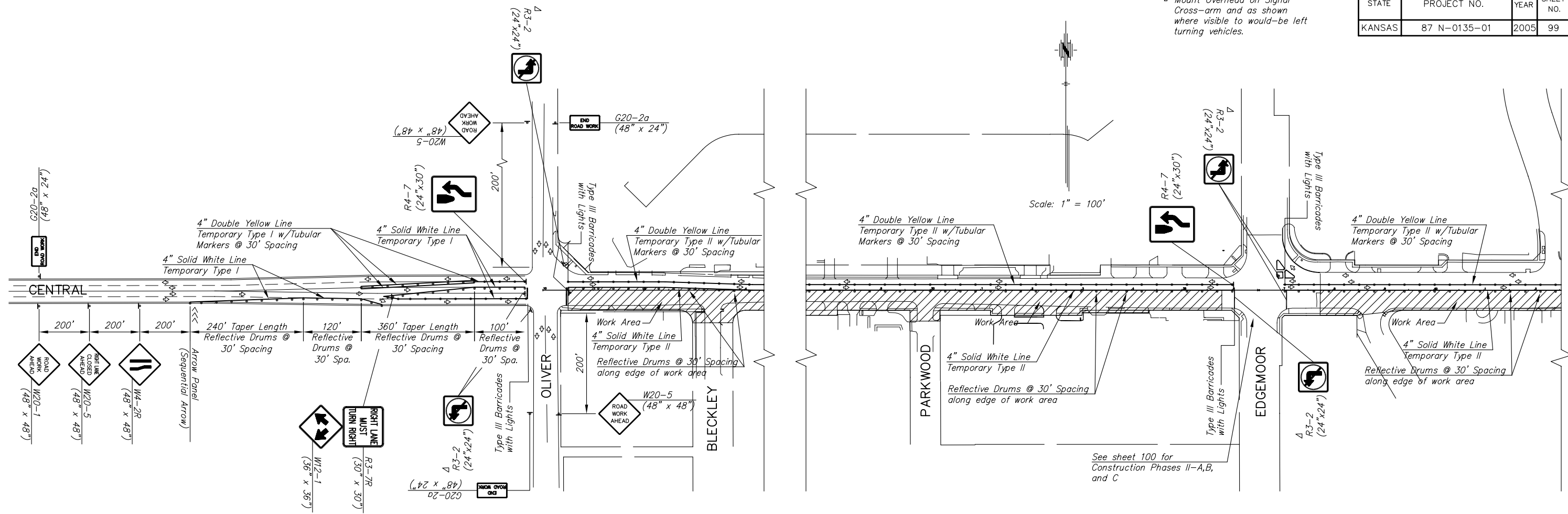


STATE	PROJECT NO.	YEAR	SHEET NO.	SHEETS
KANSAS	87 N-0135-01	2005	99	137

▲ Mount Overhead on Signal Cross-arm and as shown where visible to would-be left turning vehicles.



For Traffic Control East of Station 62+50 and on Woodlawn, see Traffic Control Plan for Construction Phase 1 or Phase 2 of Project Number 472-83874.

For Traffic Control East of Station 62+50 and on Woodlawn, see Traffic Control Plan for Construction Phase 1 or Phase 2 of Project Number 472-83874.

H:\CIVIL\03149\dwg\traff\03149tc1.dwg 1/6/2006 2:29:30 PM CST

KANSAS DEPARTMENT OF TRANSPORTATION

**CENTRAL AVENUE TRAFFIC CONTROL PHASE II**

PROJECT NO. 87N-0135-01 SEDGWICK CO.

**MKEC ENGINEERING CONSULTANTS, INC.**  
WICHITA, KANSAS

DESIGNED BY: JRA	CHECKED BY: KJS
DRAWN BY: WNJ	DATE: 12/05

SHEET 99 OF 137