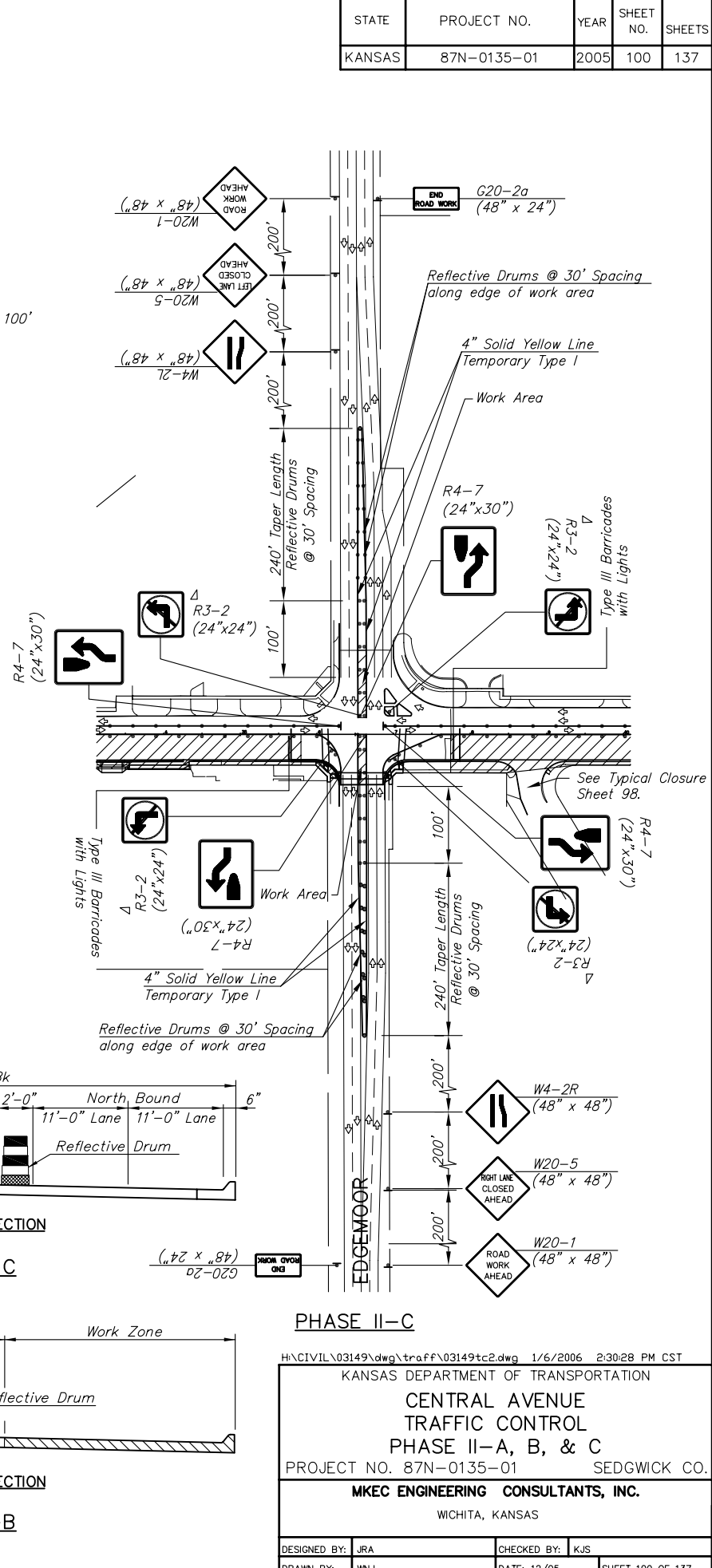
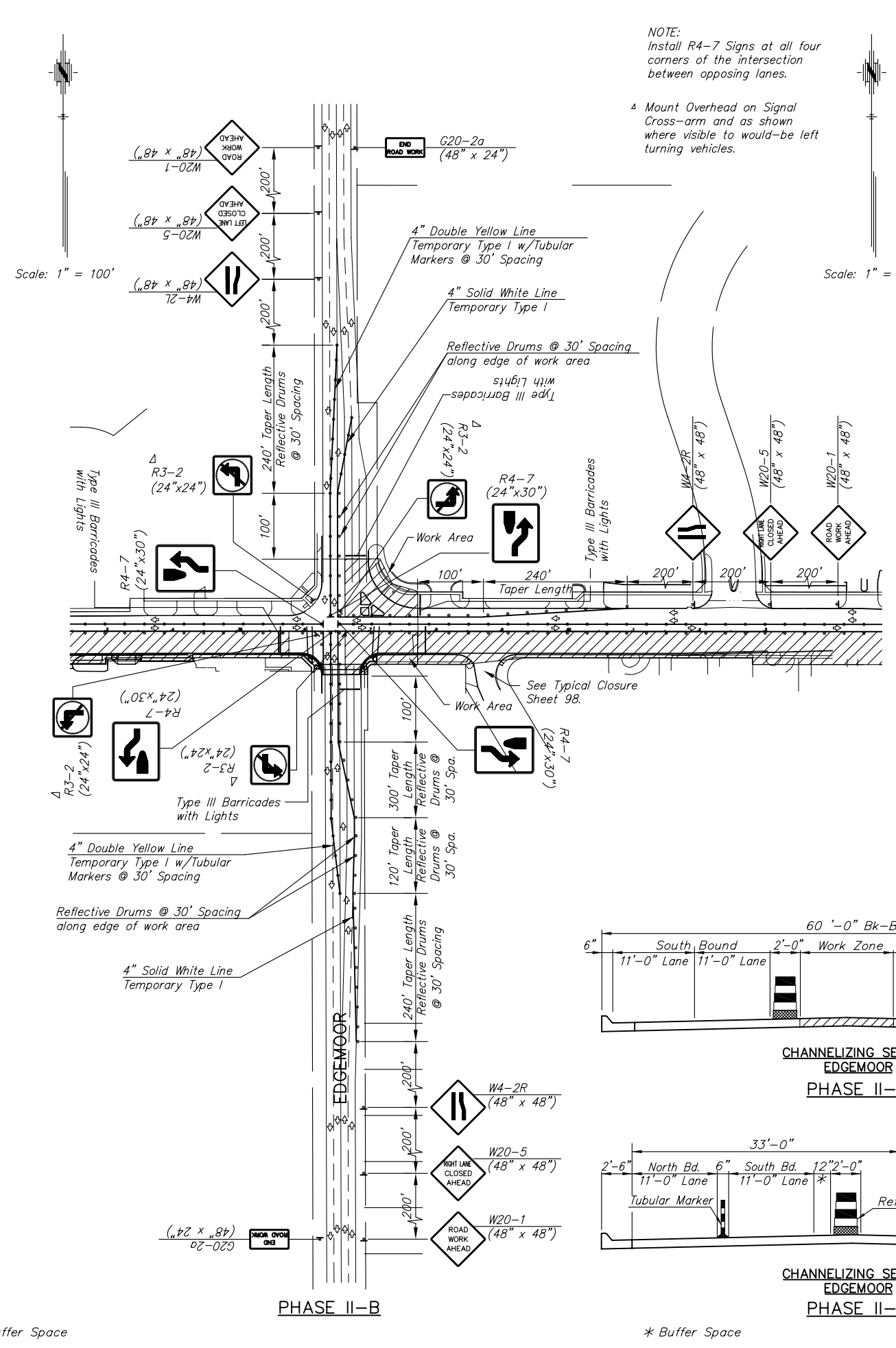
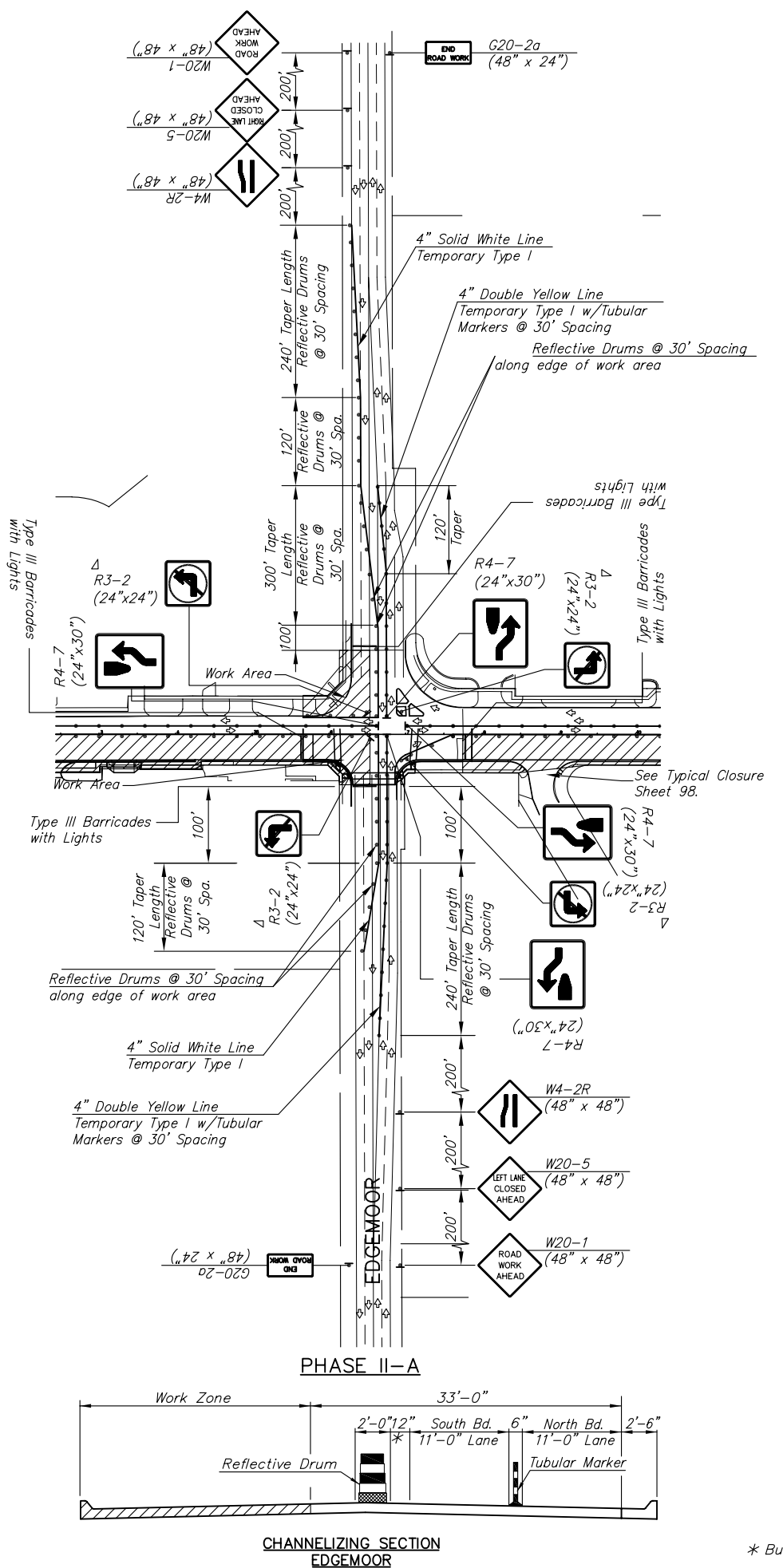


STATE	PROJECT NO.	YEAR	SHEET NO.	SHEETS
KANSAS	87N-0135-01	2005	100	137



NOTE:  
Install R4-7 Signs at all four corners of the intersection between opposing lanes.  
Mount Overhead on Signal Cross-arm and as shown where visible to would-be left turning vehicles.

Scale: 1" = 100'

Scale: 1" = 100'

\* Buffer Space

\* Buffer Space

H:\CIVIL\03149\dwg\traff\03149tc2.dwg 1/6/2006 2:30:28 PM CST  
 KANSAS DEPARTMENT OF TRANSPORTATION  
**CENTRAL AVENUE**  
**TRAFFIC CONTROL**  
**PHASE II-A, B, & C**  
 PROJECT NO. 87N-0135-01 SEDGWICK CO.  
**MKEC ENGINEERING CONSULTANTS, INC.**  
 WICHITA, KANSAS

DESIGNED BY: JRA	CHECKED BY: KJS
DRAWN BY: WNJ	DATE: 12/05

SHEET 100 OF 137