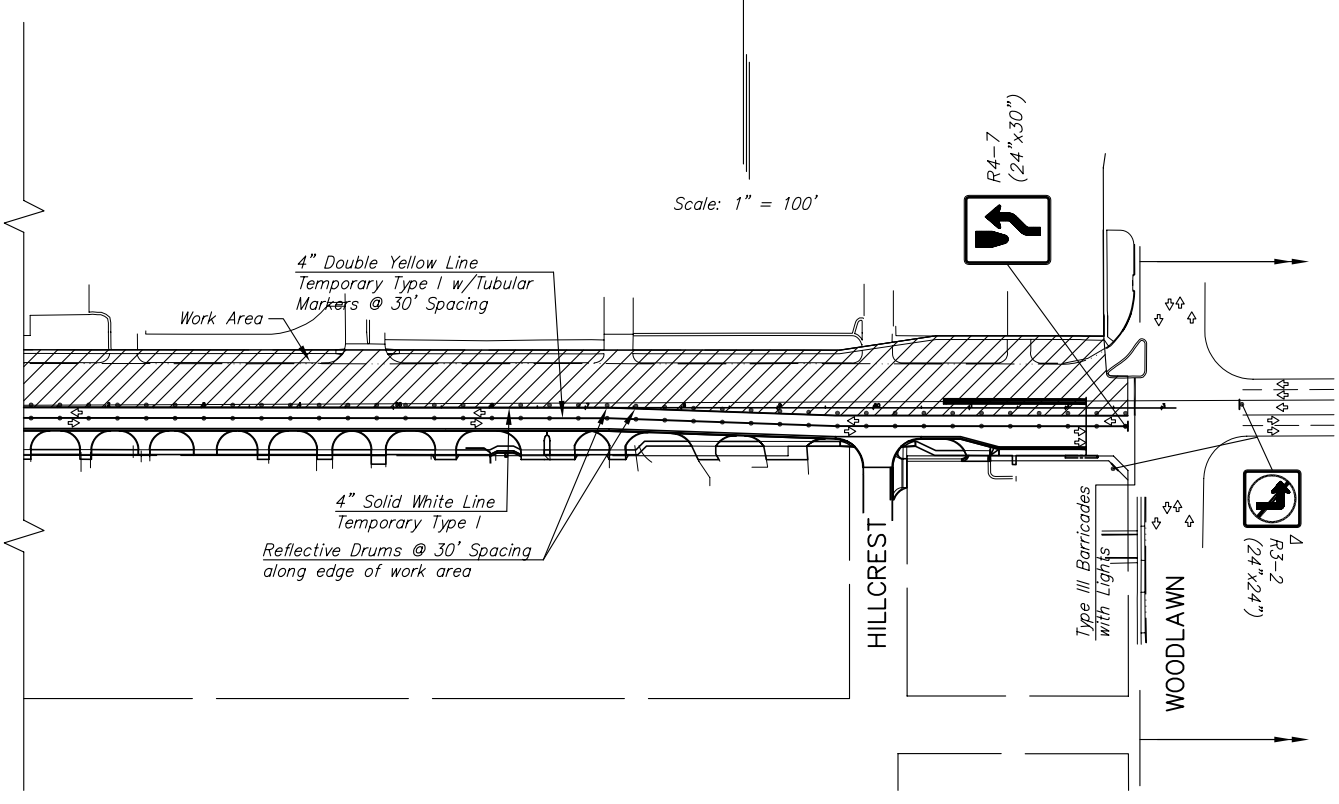
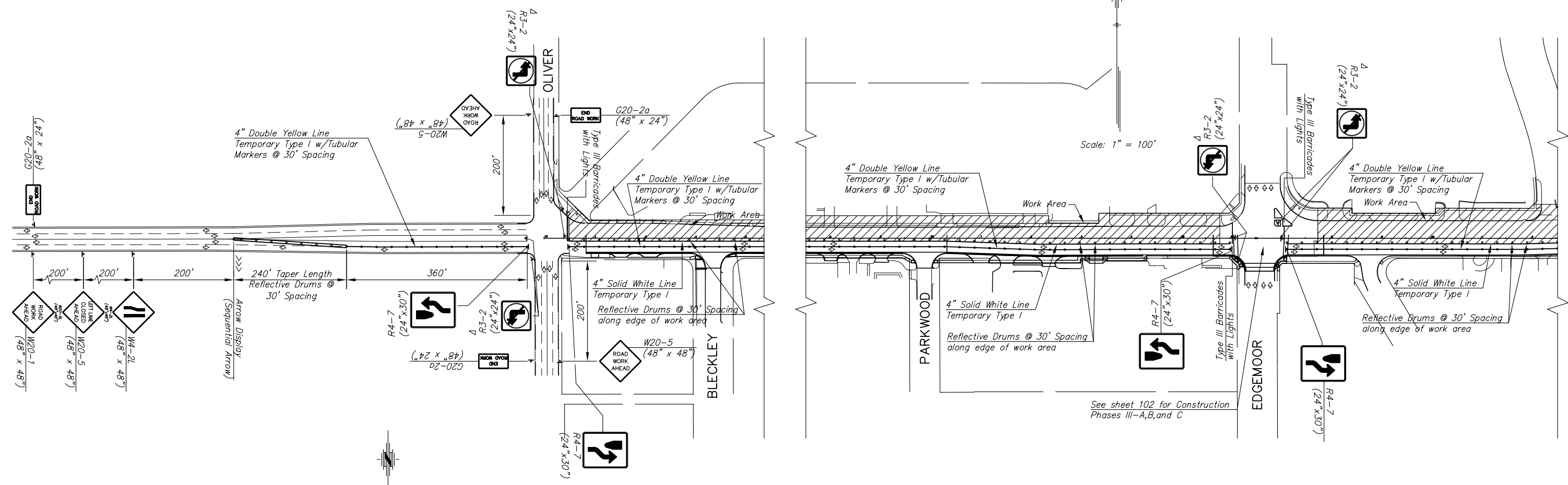


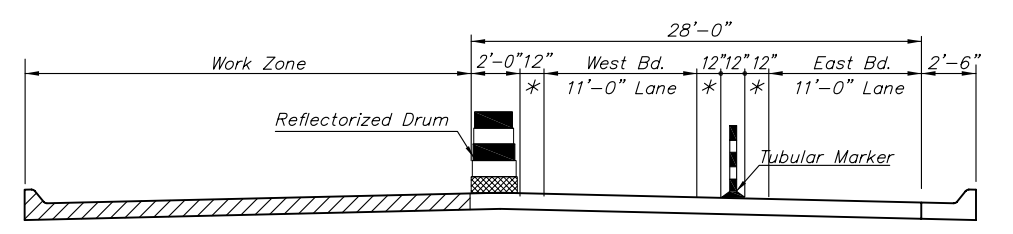
STATE	PROJECT NO.	YEAR	SHEET NO.	SHEETS
KANSAS	87N-0135-01	2005	101	137

4 Mount Overhead on Signal Cross-arm and as shown where visible to would-be left turning vehicles.



For Traffic Control East of Station 62+50 and on Woodlawn, see Traffic Control Plan for Construction Phase 1 or Phase 2 of Project Number 472-83874.

For Traffic Control East of Station 62+50 and on Woodlawn, see Traffic Control Plan for Construction Phase 1 or Phase 2 of Project Number 472-83874.



CHANNELIZING SECTION CENTRAL AVE.

* Buffer Space

H:\CIVIL\03149\dwg\traff\03149tc3.dwg 1/6/2006 11:31:41 AM CST

KANSAS DEPARTMENT OF TRANSPORTATION

CENTRAL AVENUE TRAFFIC CONTROL PHASE III

PROJECT NO. 87N-0135-01 SEDGWICK CO.

M K E C EERING CONSULTANTS, INC.
WICHITA, KANSAS

DESIGNED BY: JRA	CHECKED BY: KJS
DRAWN BY: WNJ	DATE: 12/05 SHEET 101 OF 137