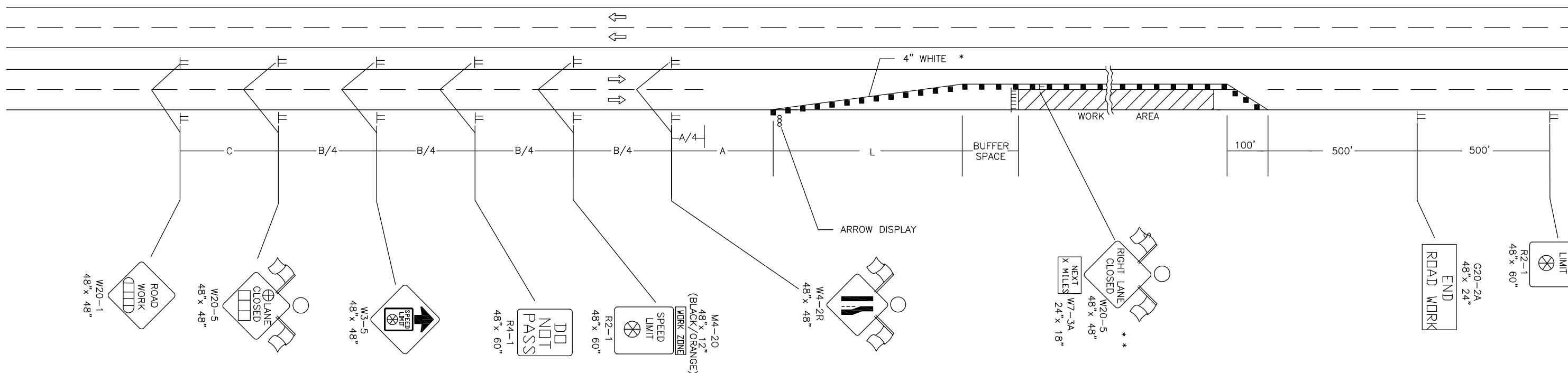


|        |             |      |           |              |
|--------|-------------|------|-----------|--------------|
| STATE  | PROJECT NO. | YEAR | SHEET NO. | TOTAL SHEETS |
| KANSAS | 87N-0135-01 | 2005 | 106       | 137          |

REFER TO STD. TE710 FOR ADDITIONAL INFORMATION ON TRAFFIC CONTROL SIGNS AND SIGN SPACING.  
REFER TO STD. TE702 FOR INFORMATION ON TAPERS AND CHANNELIZING DEVICES.  
REFER TO STD. TE700 FOR LENGTH OF BUFFER SPACE.



LEFT-SIDE SIGNS SHALL BE OMITTED FOR A FOUR-LANE UNDIVIDED HIGHWAY.

\* FOR LEFT LANE CLOSURES USE W4-2L AND YELLOW EDGE LINE ALONG CHANNELIZING DEVICES.

\*\* THE W20-5 (RIGHT LANE CLOSED) AND W7-3A (NEXT X MILES) SIGNS SHOULD BE PLACED AT 2 MILE INCREMENTS ON A PROJECT OF 4 MILES OR LONGER.

- Channelizing Devices
- ||| Type III Barricades
- ⊞ AHEAD, 1500 FT Or 1 MILE
- ⊗ Speed To Be Determined By The Engineer
- ⊞ AHEAD, 1000 FT, 1500 FT Or 1/2 MILE
- ⊕ RIGHT OR LEFT
- X Length To The Nearest Whole Mile
- TYPE "A" LIGHT

| H:\CIVIL\03149\dwg\Details\te744.dwg 02/24/2006 01:29:29 PM CST |          |                                            |      |        |
|-----------------------------------------------------------------|----------|--------------------------------------------|------|--------|
| 3                                                               | 2-1-05   | CLARIFIED NOTES, UPDATED WARNING SIGNS     | B.H. | A.A.A. |
| 2                                                               | 11-19-03 | CHANGED BORDER                             | B.H. | S.A.B. |
| 1                                                               | 9-26-02  | REMOVED G20-1 SIGNS, ADDED W20-5 AND W7-3A | M.H. | S.A.B. |
| NO.                                                             | DATE     | REVISIONS                                  | BY   | APP'D  |

KANSAS DEPARTMENT OF TRANSPORTATION  
TYPICAL TRAFFIC CONTROL  
FOUR-LANE HIGHWAY  
ONE LANE CLOSED

TE744 9/1/00

|               |           |          |                   |
|---------------|-----------|----------|-------------------|
| FHWA APPROVAL | 2-1-2005  | APP'D    | Anthony A. Airola |
| DESIGNED      | B.A.H.    | DETAILED | B.A.H.            |
| QUANTITIES    | QUAN. CK. | TRACED   | TRACE CK.         |