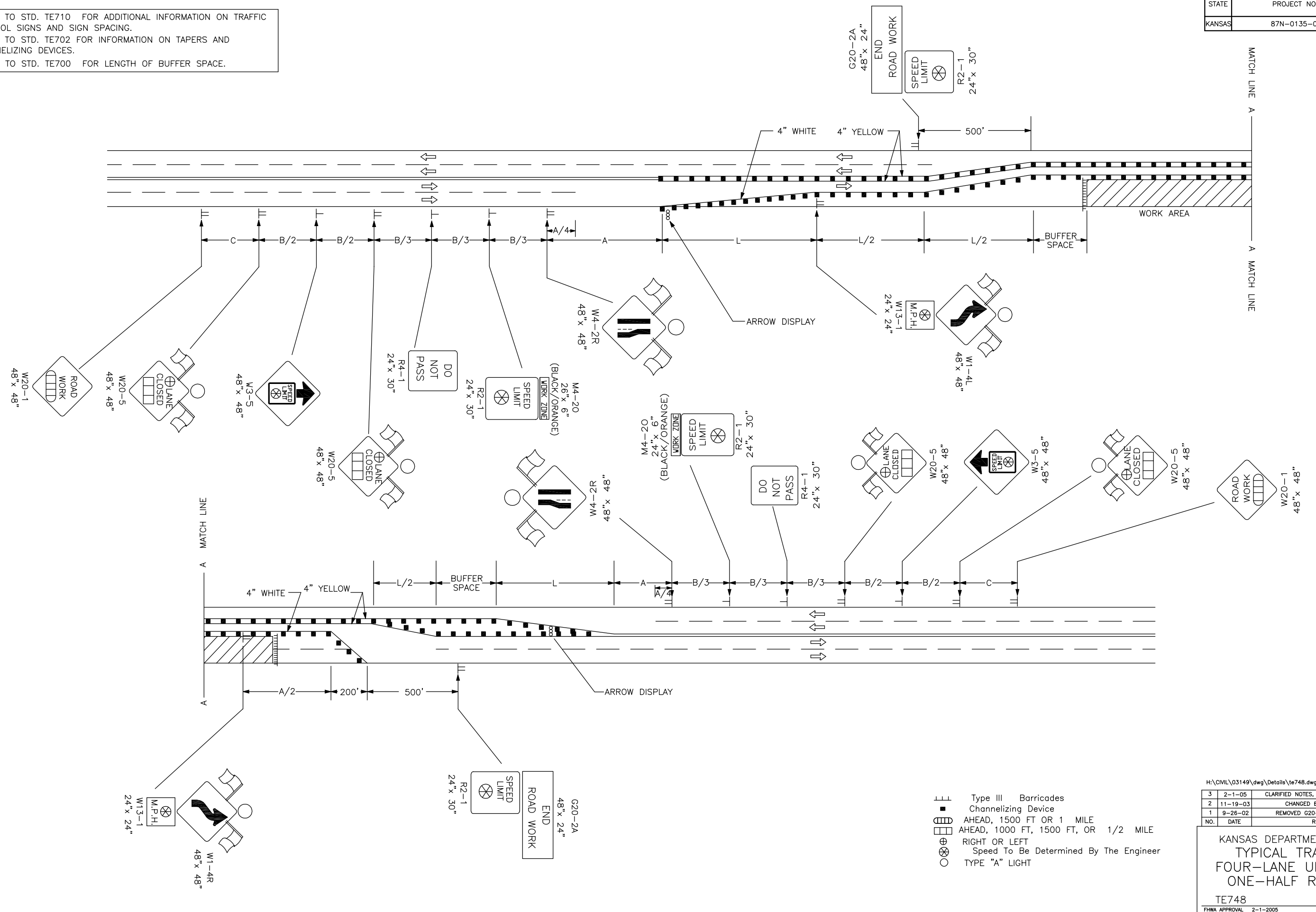


REFER TO STD. TE710 FOR ADDITIONAL INFORMATION ON TRAFFIC CONTROL SIGNS AND SIGN SPACING.  
 REFER TO STD. TE702 FOR INFORMATION ON TAPERS AND CHANNELIZING DEVICES.  
 REFER TO STD. TE700 FOR LENGTH OF BUFFER SPACE.



- T Type III Barricades
- Channelizing Device
- ▭ AHEAD, 1500 FT OR 1 MILE
- ▭ AHEAD, 1000 FT, 1500 FT, OR 1/2 MILE
- ⊕ RIGHT OR LEFT
- ⊗ Speed To Be Determined By The Engineer
- TYPE "A" LIGHT

H:\CIVIL\03149\dwg\Details\te748.dwg 02/24/2006 01:28:56 PM CST

NO.	DATE	REVISIONS	BY	APP'D
3	2-1-05	CLARIFIED NOTES, UPDATED WARNING SIGNS	B.H.	AAA.
2	11-19-03	CHANGED BORDER	B.H.	S.A.B.
1	9-26-02	REMOVED G20-1 SIGNS	M.H.	S.A.B.

KANSAS DEPARTMENT OF TRANSPORTATION  
 TYPICAL TRAFFIC CONTROL  
 FOUR-LANE UNDIVIDED HIGHWAY  
 ONE-HALF ROADWAY CLOSED  
 TE748 9/1/00

FHWA APPROVAL	2-1-2005	APP'D	Anthony A. Arobaire
DESIGNED	B.A.H.	DETAILED	B.A.H.
QUANTITIES	QUAN. CK.	TRACED	TRACE CK.