

STATE	PROJECT NO.	YEAR	SHEET NO.	TOTAL SHEETS
KANSAS	87 N-0135-01	2005	1	137

INDEX OF SHEETS

SHEET NO	DESCRIPTION
1	TITLE SHEET
2	GENERAL NOTES
3-5	TYPICAL SECTIONS
6-25	PAVING PLAN AND PROFILE SHEETS
26-28	INTERSECTION DETAILS
29-30	CONCRETE APPROACH SLAB
31-35	PAVING DETAILS
36-46, 46A	INLET AND MANHOLE DETAILS
47	MISCELLANEOUS DETAILS
48	MODULAR RETAINING WALL PROFILES
49-53	RCB DETAILS, 3'-10"x3' RCB EXTENSION
54-56	RCB DETAILS, 4'-10"x5' RCB
57-63	RCB AUXILIARY DETAILS
64-65	SANITARY SEWER PLAN AND PROFILE
66-78	WATER PLAN AND PROFILE
79-81	WATER DETAILS
82-83	SUMMARY OF QUANTITIES
84-87	SOIL EROSION BMP
88-92	TRAFFIC SIGNAL PLAN AND DETAILS
93-97	PAVEMENT MARKING AND SIGNING
98	CONSTRUCTION SEQUENCE SUMMARY
99-107	TRAFFIC CONTROL
108-109	DRAINAGE MAP AND SUMMARY
110-137	CROSS SECTIONS

STATE OF KANSAS
DEPARTMENT OF TRANSPORTATION



PLAN AND PROFILE OF PROPOSED
EAST CENTRAL AVENUE IMPROVEMENTS
FROM OLIVER TO WOODLAWN

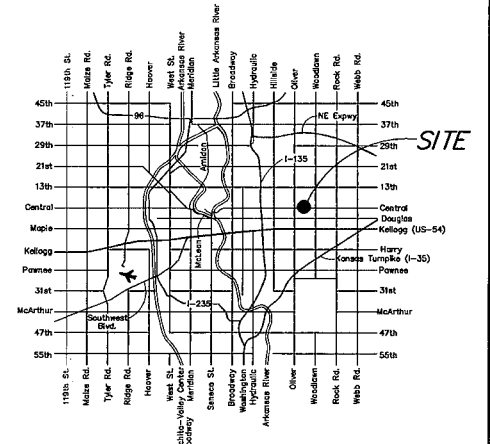
FEDERAL AID PROJECT

C.O.W. PROJECT NO. 472-83873
PAVING O.C.A. NO. 706871
WATER O.C.A. NO. 620377

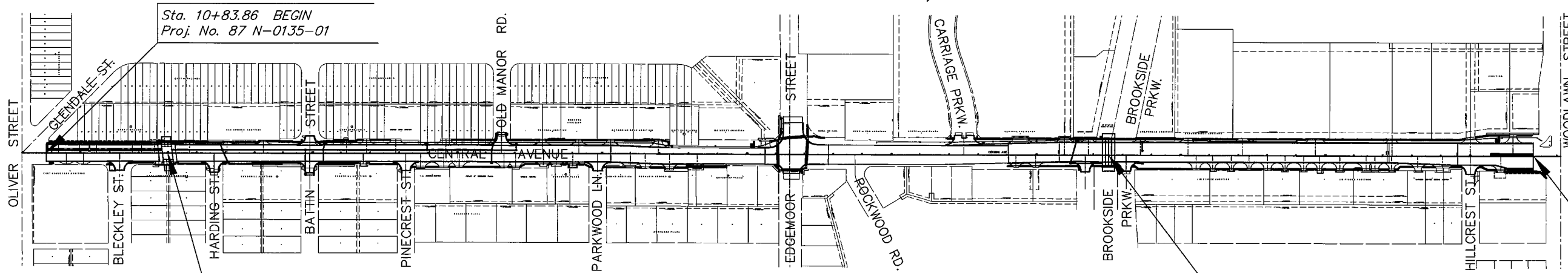
WICHITA, SEDGWICK COUNTY, KANSAS
POPULATION = 335,562

STP/CMQ-N013(501)

MILL AND OVERLAY
GRADING AND SURFACING
STORM SEWER
PAVEMENT MARKING
SEEDING
BRIDGE



SCALE: 1" = 200'



DESIGN DESIGNATION

AADT (2002)	=	25,892
AADT (2030)	=	31,000
DHV	=	10 %
D	=	60 %
T	=	3 %
V	=	35 M.P.H.
Control of Access	=	NONE
Clear Zone	=	6 FT.

Sta. 15+01.73 Extend
Br. No. 430400876400080
3 - 10' x 3' R.C. Grade Box
18.0' Lt. & 18.0' Rt.
8° Skew Left
61' Roadway

Sta. 47+55.05
Br. No. 430400876400090
4 - 10' x 5' RCBB
71'-0" Roadway

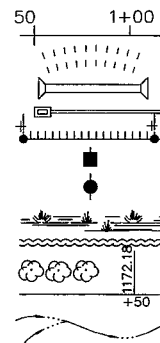
Sta. 62+21.59 END
Proj. No. 87 N-0135-01

LaFarge - Contractor
Tim Anthis - City of Wichita, Inspector
Date Released: 10/01/08
NOT AN AS-BUILT
:APR 12/22/08
Note: Tied with OCA No. 663498

NOTE:
TWO WAY TRAFFIC TO BE CARRIED THROUGH
CONSTRUCTION. LOCAL TRAFFIC WILL BE
PERMITTED TO ADJACENT PROPERTIES.

CONVENTIONAL SIGNS

COUNTY LINE	---	CENTER LINE OF PROJECT	---
CITY LIMITS	////	TERRACE	---
STATE OR NATIONAL LINE	----	CULVERTS	---
TOWNSHIP, SECTION or GRANT LINE	----	DROP INLET & STORM SEWER	---
PROPERTY LINE	---	ACCESS CONTROL	---
HIGHWAY FENCE	----	POWER POLE	---
EXISTING FENCE	----	TELEPHONE POLE	---
GUARD FENCE	----	MARSH	---
CONSTRUCTION LIMITS	----	HEDGE	---
RIGHT OF WAY LINE	----	TREES	---
TRAVELED WAY	----	PROFILE ELEVATION	---
RAILROADS	----	STREAM or CREEK	---



GROSS LENGTH OF PROJECT	5,137.73 FT.
EXCEPTIONS	
ADDITIONS	
NET LENGTH OF PROJECT	5,137.73 FT.
NET LENGTH OF BRIDGES	76.86 FT.
NET LENGTH OF ROAD	5,060.87 FT.



APPROVED - DATE

JIM ARMOUR, P.E.
CITY ENGINEER

PREPARED & SUBMITTED BY

MKEC ENGINEERING CONSULTANTS, INC.
WICHITA, KANSAS

RECOM. FOR APPROVAL-DATE

CHIEF, BUREAU OF DESIGN
KANSAS DEPARTMENT OF TRANSPORTATION

APPROVED - DATE

STATE TRANSPORTATION ENGINEER
KANSAS DEPARTMENT OF TRANSPORTATION

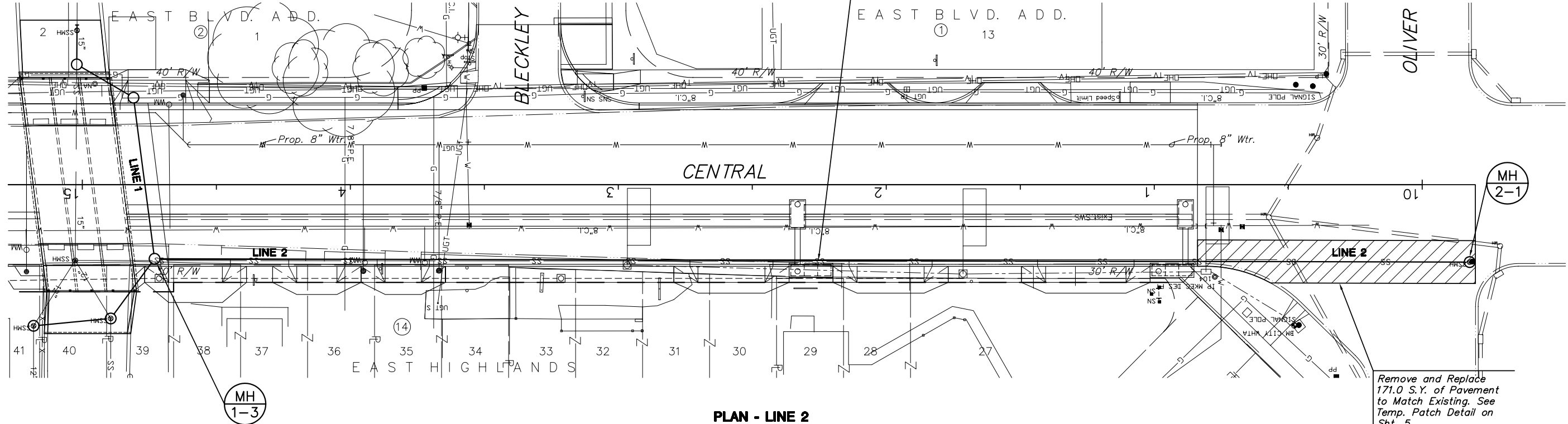
STATE	PROJECT NO.	YEAR	SHEET NO.	SHEETS
KANSAS	87N-0135-01	2005	65	137

Notes:

Existing lines not remaining in service shall be abandoned in place or removed. All open ends of pipe shall be plugged. See Sh. No. 47.

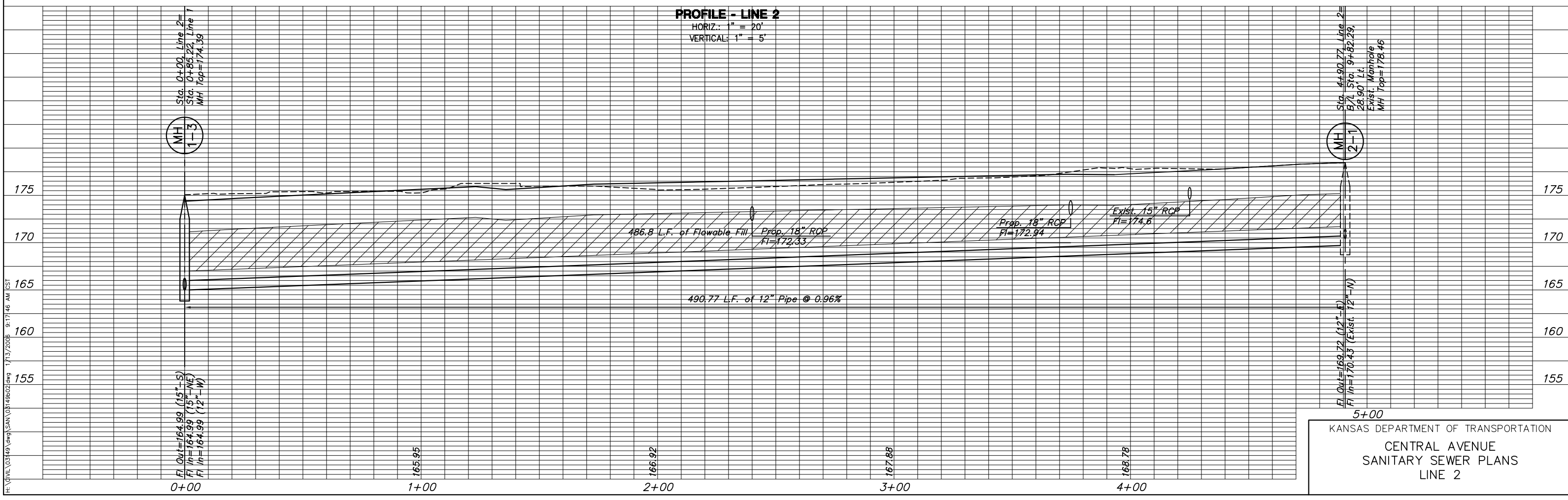
Existing manhole conflicting with new construction shall be removed.

Remove and Replace existing 8" Sanitary Sewer and Replace with 12" Sanitary Sewer as shown.



PLAN - LINE 2
SCALE: 1" = 20'

PROFILE - LINE 2
HORIZ.: 1" = 20'
VERTICAL: 1" = 5'



5+00
KANSAS DEPARTMENT OF TRANSPORTATION
CENTRAL AVENUE
SANITARY SEWER PLANS
LINE 2

H:\P\1034343.dwg (SAA) 01/14/2008 9:17:46 AM CST