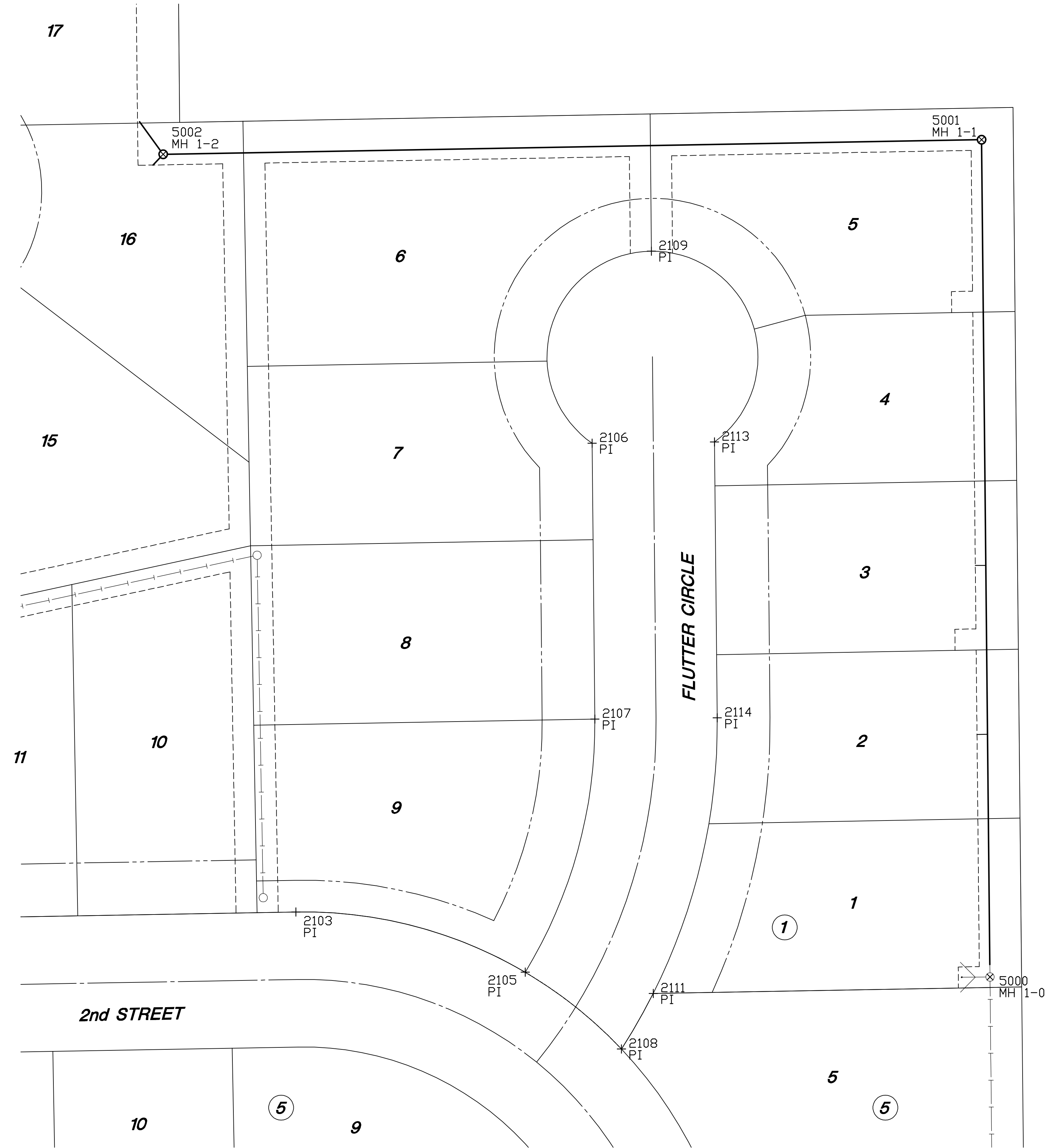
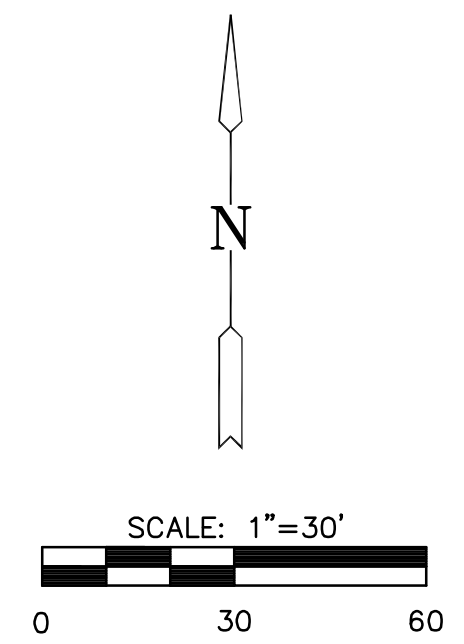


**SANITARY SEWER PLANS FOR
MONARCH LANDING SECOND ADD.
PHASE 2 PART A**



| PLAT IRONS | | | |
|------------|------------|------------|-------|
| Point # | Northing | Easting | Desc. |
| 2103 | 1701680.98 | 1700830.90 | PI |
| 2105 | 1701662.41 | 1700939.98 | PI |
| 2106 | 1701903.02 | 1700971.31 | PI |
| 2107 | 1701772.33 | 1700972.81 | PI |
| 2108 | 1701616.01 | 1700985.21 | PI |
| 2109 | 1701994.04 | 1700999.40 | PI |
| 2111 | 1701642.30 | 1701000.26 | PI |
| 2113 | 1701903.80 | 1701029.30 | PI |
| 2114 | 1701772.91 | 1701030.81 | PI |

| SANITARY SEWER POINTS | | | |
|-----------------------|------------|------------|--------|
| Point # | Northing | Easting | Desc. |
| 5000 | 1701650.15 | 1701159.85 | MH 1-0 |
| 5001 | 1702046.84 | 1701155.88 | MH 1-1 |
| 5002 | 1702039.92 | 1700768.04 | MH 1-2 |



BUBBLE MAP

SHEET TITLE
468-84433
PROJECT NUMBER

DFL
DESIGN BY

DMU
DRAWN BY

GJA
CHECKED BY

ISSUED
June 2009

REVISED

SHEET NO.

5 of 11