

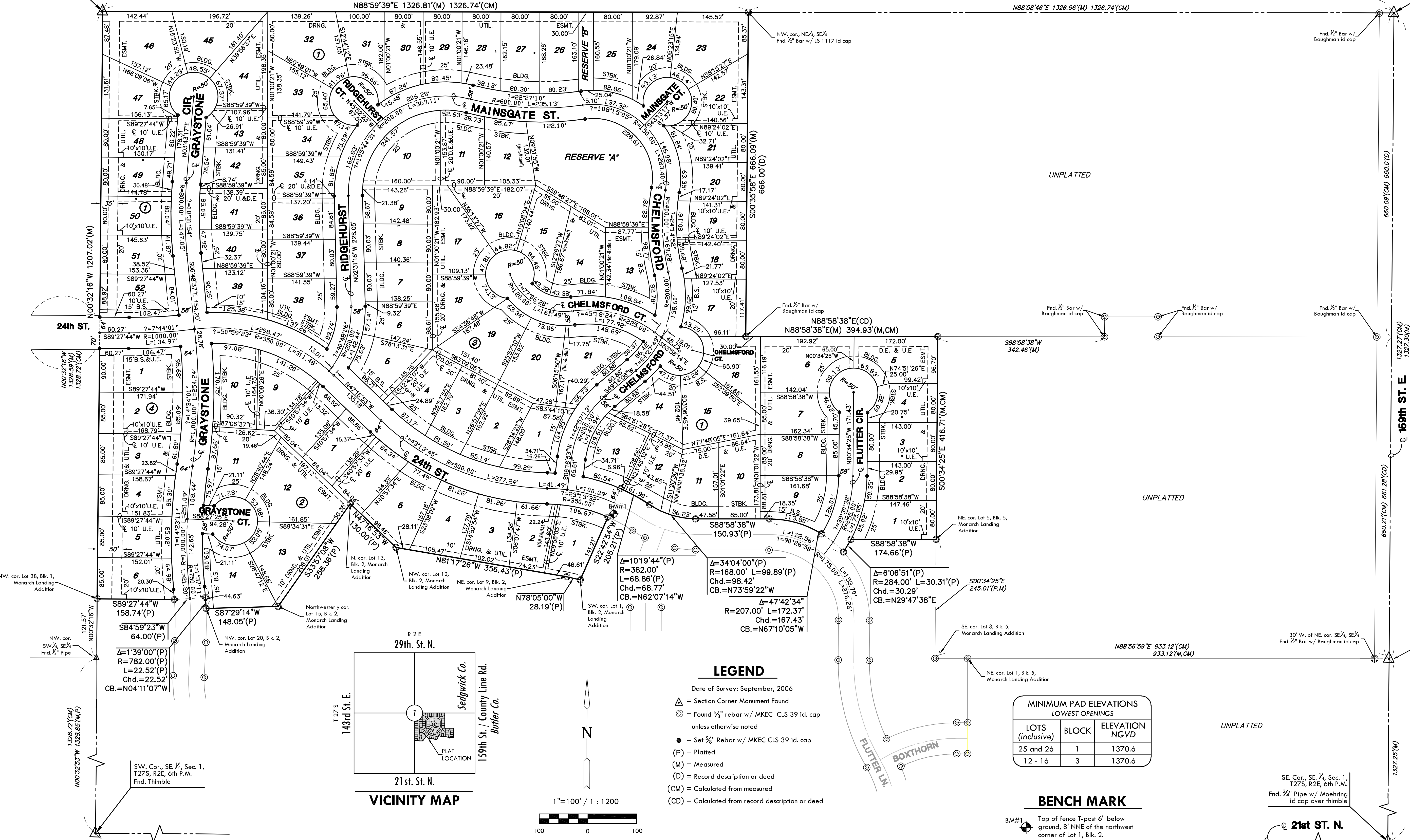
FINAL PLAT

MONARCH LANDING SECOND ADDITION

AN ADDITION TO WICHITA, SEDGWICK COUNTY, KANSAS

NW. cor., SE 1/4, Sec. 1,
T27S, R2E, 6th P.M.
Fnd. 1/2" pipe
P.O.B.

NE. Cor., SE 1/4, Sec. 1,
T27S, R2E, 6th P.M.
Fnd. Stone



UNPLATTED

UNPLATTED

UNPLATTED

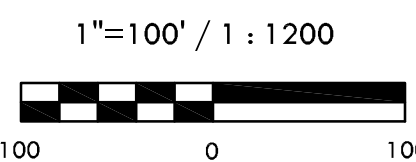
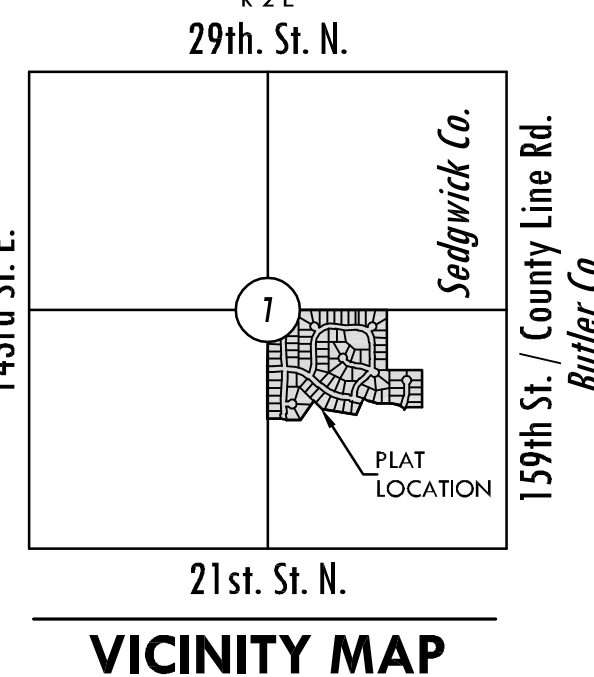
LEGEND

- Date of Survey: September, 2006
- △ = Section Corner Monument Found
 - ⊙ = Found 3/8" rebar w/ MKEC CLS 39 id. cap unless otherwise noted
 - = Set 3/8" Rebar w/ MKEC CLS 39 id. cap
 - (P) = Platted
 - (M) = Measured
 - (D) = Record description or deed
 - (CM) = Calculated from measured
 - (CD) = Calculated from record description or deed

MINIMUM PAD ELEVATIONS LOWEST OPENINGS		
LOTS (inclusive)	BLOCK	ELEVATION NGVD
25 and 26	1	1370.6
12 - 16	3	1370.6

BENCH MARK

BM#1
Top of fence T-post 6" below ground, 8' NNE of the northwest corner of Lot 1, Blk. 2.
Elev. = 1375.29 NGVD 29.



Basis of Bearings: Kansas coordinate system 1983 south zone bearing of S88°55'31"W along the S. Line of SE 1/4, Sec. 1, T27S, R2E, 6th P.M.

MKEC
ENGINEERING
CONSULTANTS, INC.

411 N. WEBB ROAD
WICHITA, KS. 67206
316-684-9600

SHEET NO.

10 of 10

1
2