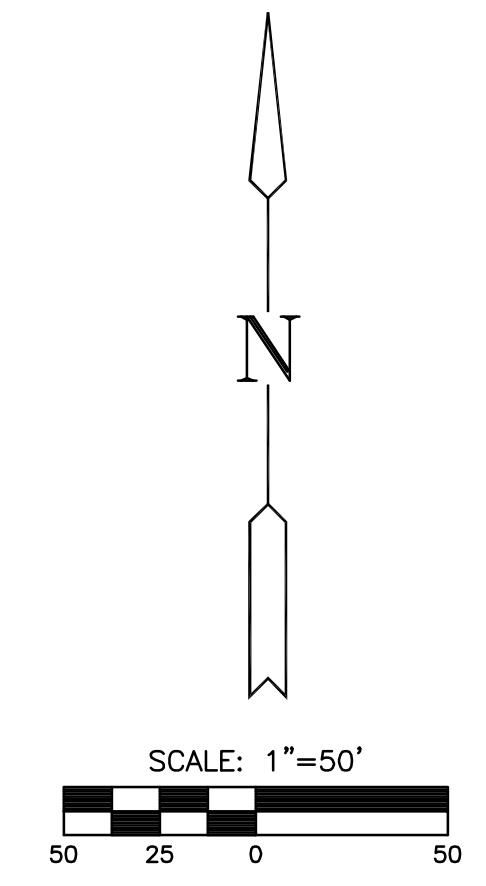


PAVING & INCIDENTAL DRAINAGE PLANS
MONARCH LANDING SECOND ADDITION
PHASE 2 PART A



21st STREET
VICINITY MAP



EARTHWORK SUMMARY

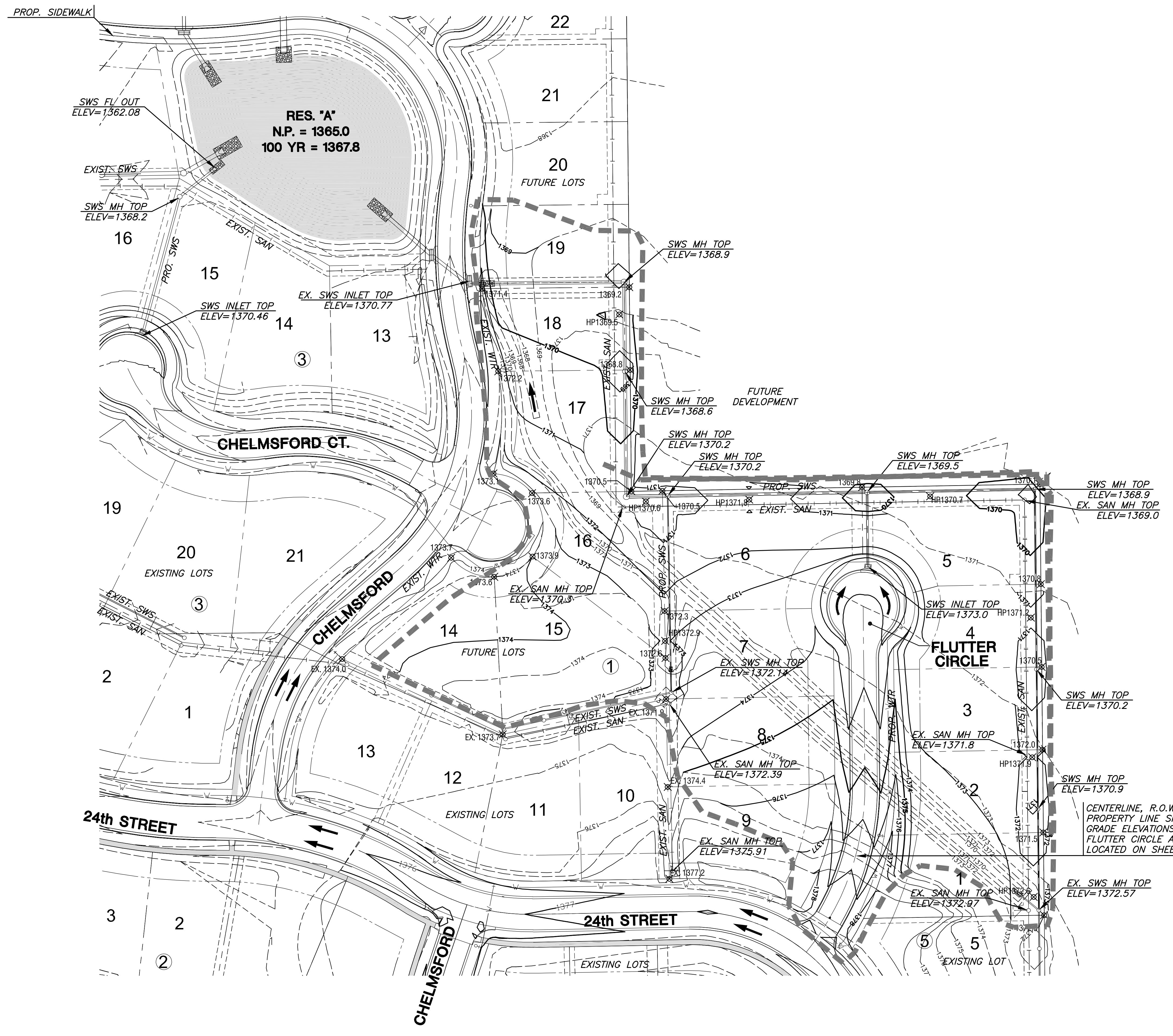
EXCAVATION	1795 C.Y.
*COMPACTED FILL (95%)	4240 C.Y.
EXCAVATION STOCKPILE	3080 C.Y.

* 1.5% SHRINK/SWELL FACTOR ADDED

LEGEND

- PROPOSED TREE PROTECTION
- PROPOSED STORM WATER SEWER
- EXISTING WATER LINE
- EXISTING SANITARY SEWER LINE
- EXISTING CONTOURS
- PROPOSED CONTOURS
- LIMITS OF GRADING
- NORMAL POOL
- DRAINAGE ARROWS

CENTERLINE, R.O.W., & PROPERTY LINE SPOT GRADE ELEVATIONS ALONG FLUTTER CIRCLE ARE LOCATED ON SHEET 21



PLOTTED: Wednesday, July 01, 2009 @ 01:38PM

GRADING PLAN

SHEET TITLE	472-84613
PROJECT NUMBER	

DESIGN BY	DFL
DRAWN BY	JWC
CHECKED BY	GJA

ISSUED	June 2009
REVISED	

J:\CIVIL\06201\07165\PAV\PHASE 2\PHASE2A\07165_LG.DWG