

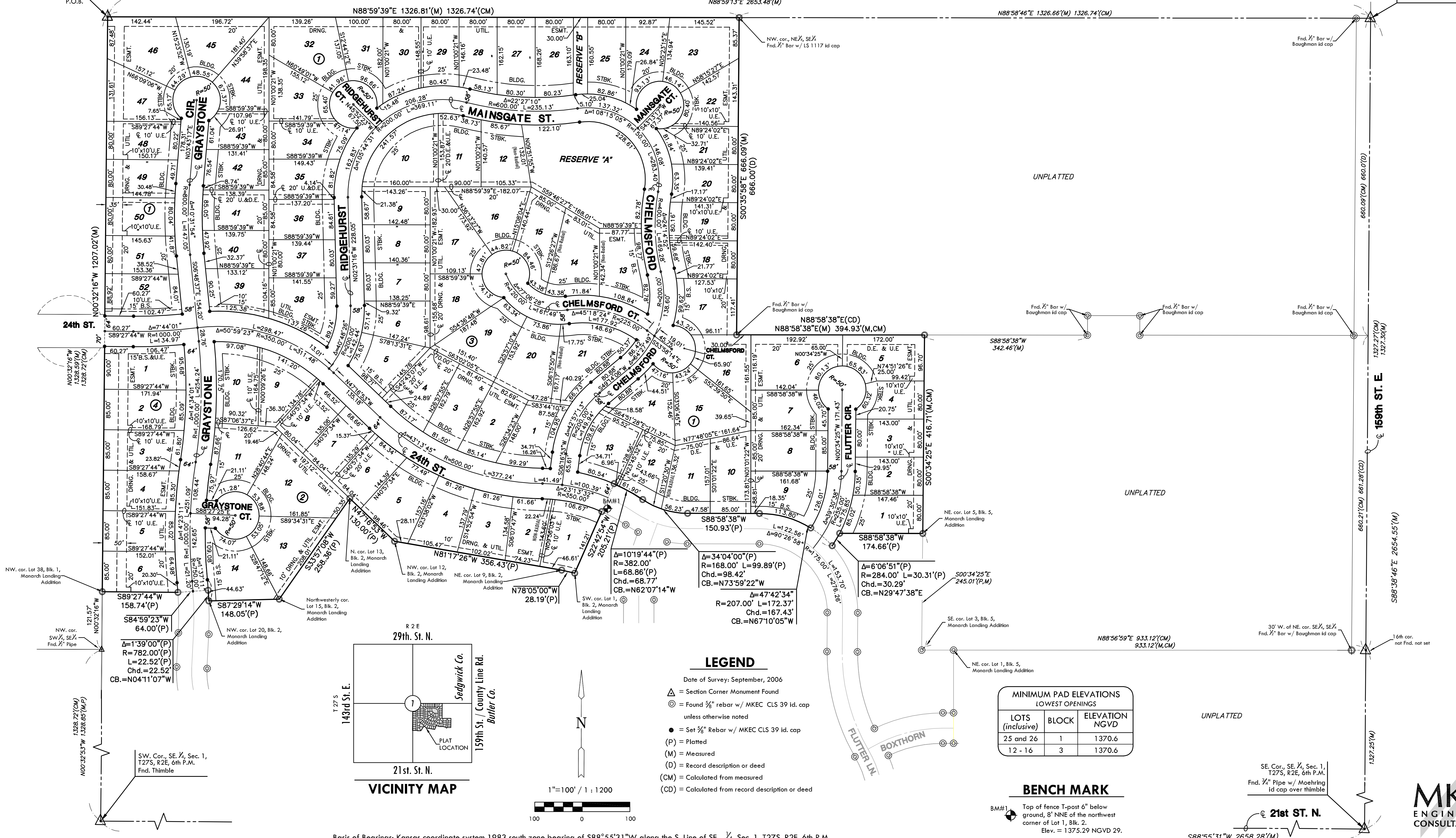
# FINAL PLAT

## MONARCH LANDING SECOND ADDITION

### AN ADDITION TO WICHITA, SEDGWICK COUNTY, KANSAS

NW. cor., SE 1/4, Sec. 1,  
T27S, R2E, 6th P.M.  
Fnd. 1/2" pipe  
P.O.B.

NE. Cor., SE 1/4, Sec. 1,  
T27S, R2E, 6th P.M.  
Fnd. Stone



NW. cor. Lot 38, Blk. 1,  
Monarch Landing  
Addition

NW. cor. Lot 12,  
Blk. 2, Monarch  
Landing Addition

NE. cor. Lot 9, Blk. 2,  
Monarch Landing  
Addition

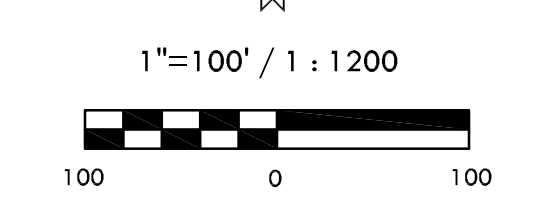
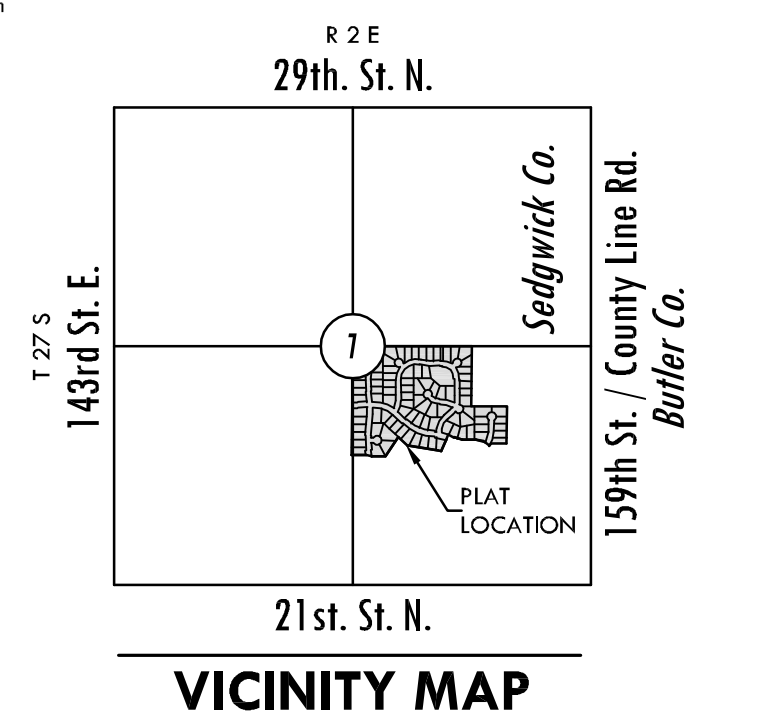
SE. cor. Lot 3, Blk. 5,  
Monarch Landing  
Addition

NE. cor. Lot 1, Blk. 5,  
Monarch Landing  
Addition

30' W. of NE. cor. SE 1/4,  
Fnd. 1/2" Bar w/ Baughman  
id cap

16th cor.  
not fnd. not set

SW. Cor., SE 1/4, Sec. 1,  
T27S, R2E, 6th P.M.  
Fnd. Thimble



Basis of Bearings: Kansas coordinate system 1983 south zone bearing of S88°53'31"W along the S. Line of SE 1/4, Sec. 1, T27S, R2E, 6th P.M.

- LEGEND**
- Date of Survey: September, 2006
  - △ = Section Corner Monument Found
  - ⊙ = Found 3/8" rebar w/ MKEC CLS 39 id. cap unless otherwise noted
  - = Set 3/8" Rebar w/ MKEC CLS 39 id. cap
  - (P) = Platted
  - (M) = Measured
  - (D) = Record description or deed
  - (CM) = Calculated from measured
  - (CD) = Calculated from record description or deed

MINIMUM PAD ELEVATIONS LOWEST OPENINGS		
LOTS (inclusive)	BLOCK	ELEVATION NGVD
25 and 26	1	1370.6
12 - 16	3	1370.6

**BENCH MARK**

BM#1 Top of fence T-post 6" below ground, 8' NNE of the northwest corner of Lot 1, Blk. 2.  
Elev. = 1375.29 NGVD 29.

SE. Cor., SE 1/4, Sec. 1,  
T27S, R2E, 6th P.M.  
Fnd. 3/4" Pipe w/ Moehring  
id cap over thimble

**MKEC**  
ENGINEERING  
CONSULTANTS, INC.

411 N. WEBB ROAD  
WICHITA, KS. 67206  
316-684-9600