

PAVING & INCIDENTAL DRAINAGE PLANS
MONARCH LANDING SECOND ADDITION
PHASE 2 PART A

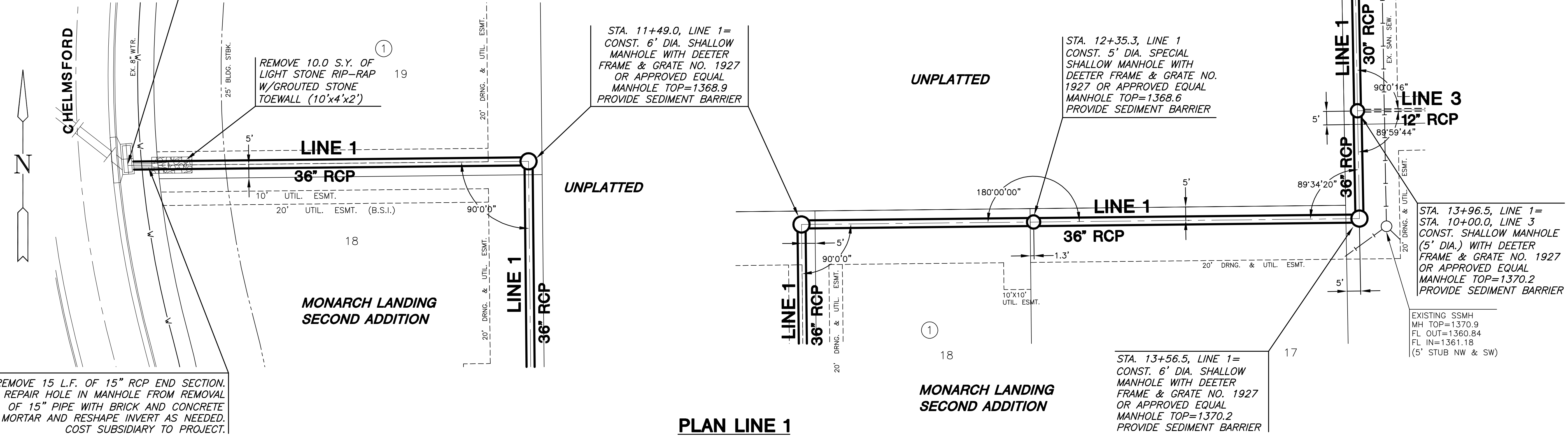
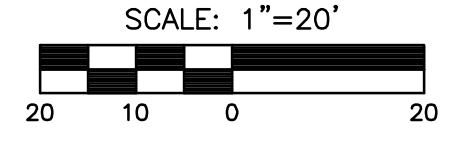
LINE 1
SHEET TITLE
472-84613
PROJECT NUMBER

DESIGN BY: **DFL**
DRAWN BY: **DM**
CHECKED BY: **GJA**

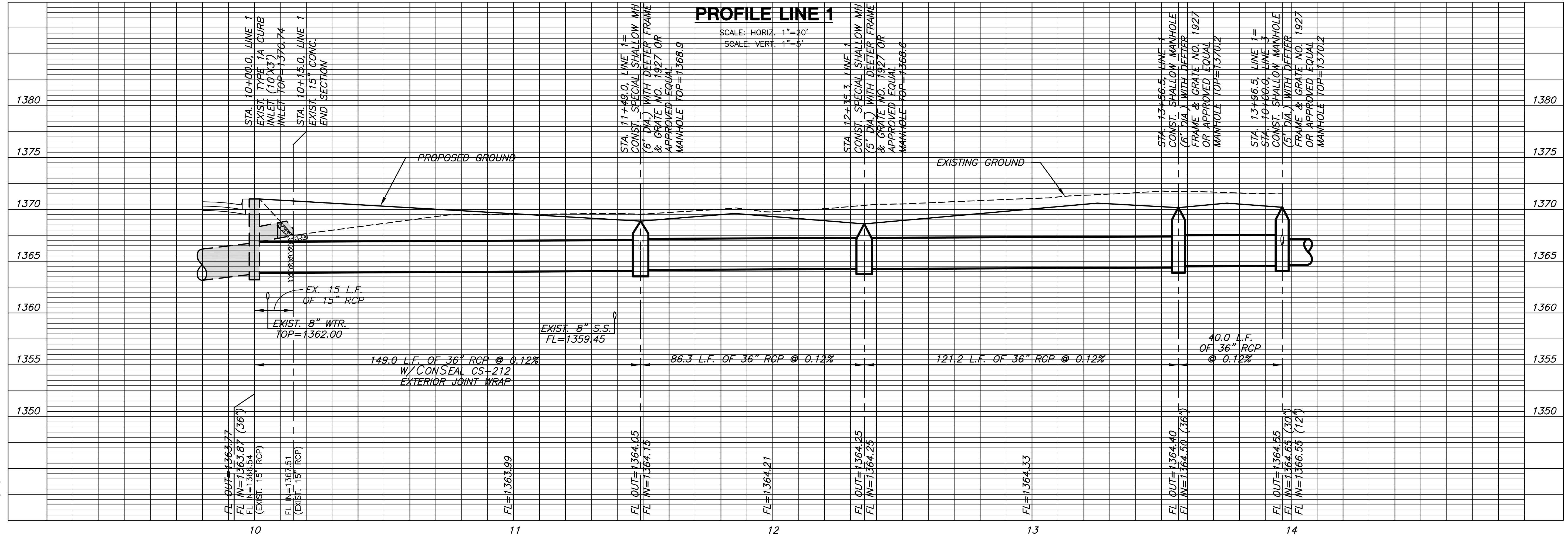
ISSUED: **June 2009**
REVISED:

SHEET NO.
9 of 24

STA. 10+00.0, LINE 1=
EXISTING INLET (10'X3')
ST. STA. 23+54.13, 17.67' LT.
INLET TOP=1370.74



PLAN LINE 1



PLOTED: Wednesday, July 01, 2009 @ 01:38PM

J:\CIVIL\06201\07165\SWIS\PHASE 2\PHASE2A\07165-D1.DWG