

GENERAL NOTES

- Contractor will be required to provide a minimum advance notice of two (2) working days to utility companies prior to starting any excavation as follows:
 Kansas One-Call 1-800-DIG SAFE
 The Contractor must notify the following in case of an emergency:
 Cox Communications 260-7204
 Kansas Gas Service 888-482-4950
 Westar 383-8600
 Peoples Natural Gas Company 1-800-303-0357
 AT&T 1-800-286-8313
 City of Wichita Water Department 262-6000
 City of Wichita Sewer Maintenance 262-6000
- Underground utility service lines and overhead utility pole lines are to be adjusted as necessary by others prior to construction unless the plans specifically call for their adjustment by the Contractor or unless the plans specifically identify a utility to be adjusted by its owner during construction. Existing utilities and their location, as shown on the plans, represent the best information obtainable for design. Location information has been obtained from the various utility companies and is either from company record drawings or company-provided field locations. The Contractor will be required to work around existing utilities within the right-of-way which do not conflict with proposed construction.
- Rubble from the removal of miscellaneous structures and excess excavation which is to be wasted shall be disposed of on sites to be provided by the Contractor. These sites shall be approved by the Engineer as to suitability, appearance and site location. Locations that, in the opinion of the Engineer, will leave an unsightly appearance will not be approved.
- All disposal sites must be approved by the Kansas Department of Health and Environment. Material either stockpiled or disposed of in a flood plain would require a Kansas State Board of Agriculture permit. Any material dumped in waters of the United States or wetlands is subject to U.S. Corps permitting regulations. Any material buried or stockpiled beyond approved of Engineers construction limits would require additional archeological investigations unless buried in a previously approved borrow location.
- The Engineer shall take field ties to all quarter section corners. The Contractor shall set a City survey monument in the required location where such quarter section corners fall within the limits of pavement construction. Survey monuments will be furnished by the City. The Engineer will accurately locate and install the iron at the quarter section corner. This work will not be paid for directly, but shall be considered subsidiary to the other pay items of work in the contract.
- The Contractor shall give all property owners and/or tenants of developed property directly abutting the construction of this project a minimum of ten (10) days advance notice prior to start of construction.
- For all ponds, the pond bottom and sides (to an elevation of 1.0' above the static pool) are to be lined with clay to a minimum depth of 1 foot, moisture conditioned and compacted to a minimum of 95 percent of standard proctor density (ASTM D-698) from minus 3 to plus 3 percent of optimum moisture content. Pond liner shall be clay soil with a minimum P.I. value of 30 or must be approved by a geotechnical engineer; soil to be paid for as "Pond Liner C.Y."
- This Storm Water Drain project is tied to the Lateral 415, FMC Sewer Project (468-84551). All easement grading and provisions for BMP's are to be completed by Storm Water Drain #351. All easement grading shall be done to the satisfaction of the Storm Water Drain #351 plans upon completion of both this Sanitary Sewer Project (468-84551) and the Storm Water Drain Project (468-84552).
- The first three (3) joints upstream of an end section of all Storm Sewer Pipe Installed shall be Restrained.
- All coordinates for Type 1A inlets are given to the center of the front inside face of the structure. Coordinates for Type P manholes are given to the center of structure.

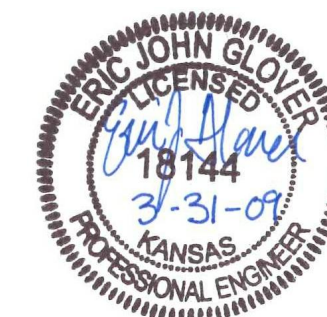
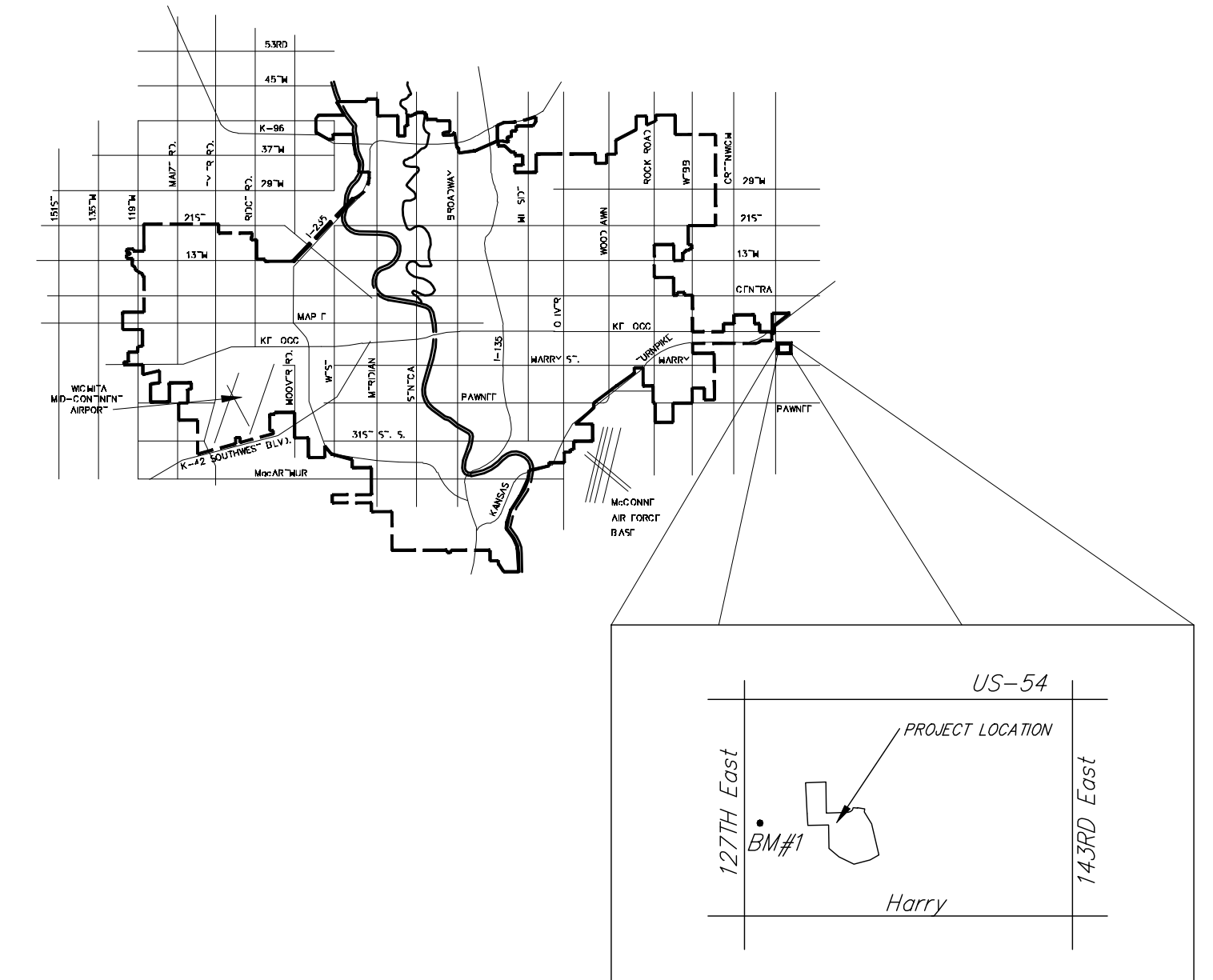
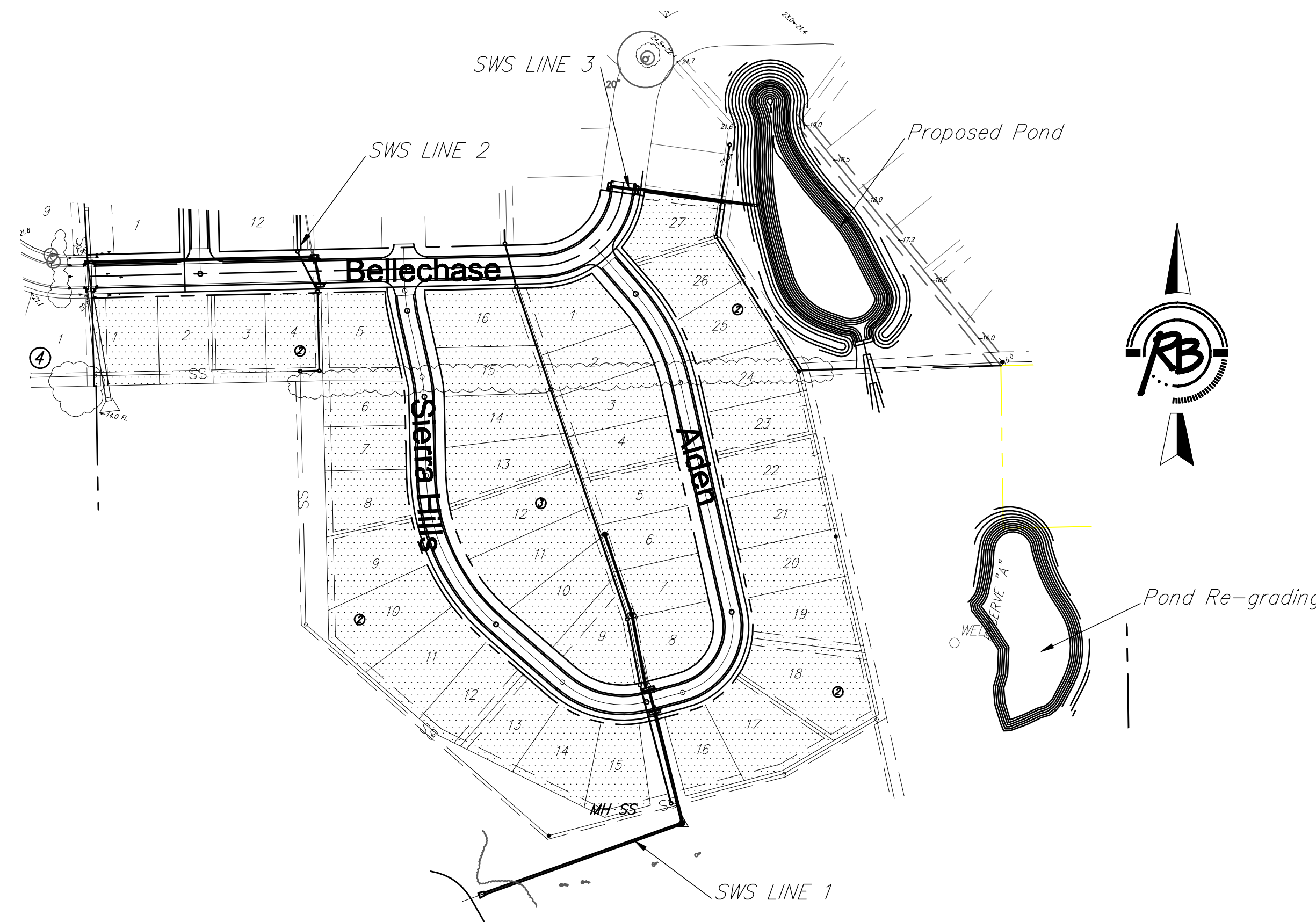
STORM WATER DRAIN #351 BELLECHASE 2ND ADDITION PROJECT NO. 468-84552 O.C.A. NO. 751480

BENCH MARKS

BENCHMARK:
 RAILROAD SPIKE IN SOUTH FACE OF POWER
 POLE 79' SOUTH SOUTHEAST OF THE WEST
 QUARTER CORNER OF SEC. 26, T27S, R2E.
 ELEVATION = 1337.46 (NGVD)

SHEET INDEX

- | | |
|--------|-------------------------|
| 1. | TITLE |
| 2. | SITE GRADING |
| 3. | GRADING SECTION |
| 4. | POND PLAN |
| 4A. | POND RE-GRADING |
| 5-6. | SWS LINE 1 |
| 7. | SWS LINE 2 |
| 8. | SWS LINE 3 |
| 9. | SHALLOW MH DETAIL |
| 10. | CONCRETE HEADWALL |
| 11. | TYPE 1A SINGLE |
| 12. | TYPE 1A DOUBLE |
| 13. | TYPE 1A TRIPLE |
| 14. | BMP PLAN |
| 15-19. | BMP DETAILS |
| 20. | ADDITION COORDINATE MAP |
| 21. | 4 CORNER LOT GRADING |
| 22. | FINAL PLAT |



 IMPROVEMENT DISTRICT

CITY OF WICHITA, KANSAS
 JAMES ARMOUR, P.E. - CITY ENGINEER

VICINITY MAP



Ruggles & Bohm, P.A.
 Engineering, Surveying, Land Planning
 824 North Main
 Wichita, Kansas 67203
 www.rbkansas.com
 (316) 264-8000
 (316) 264-4821 fax
 E-mail: info@rbkansas.com