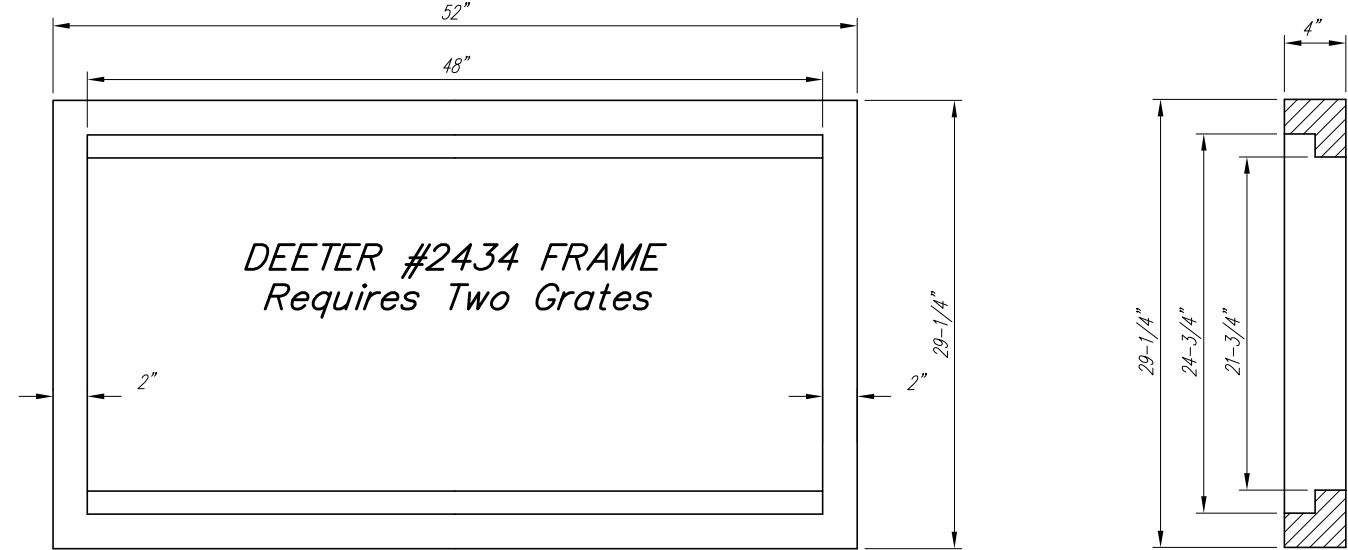
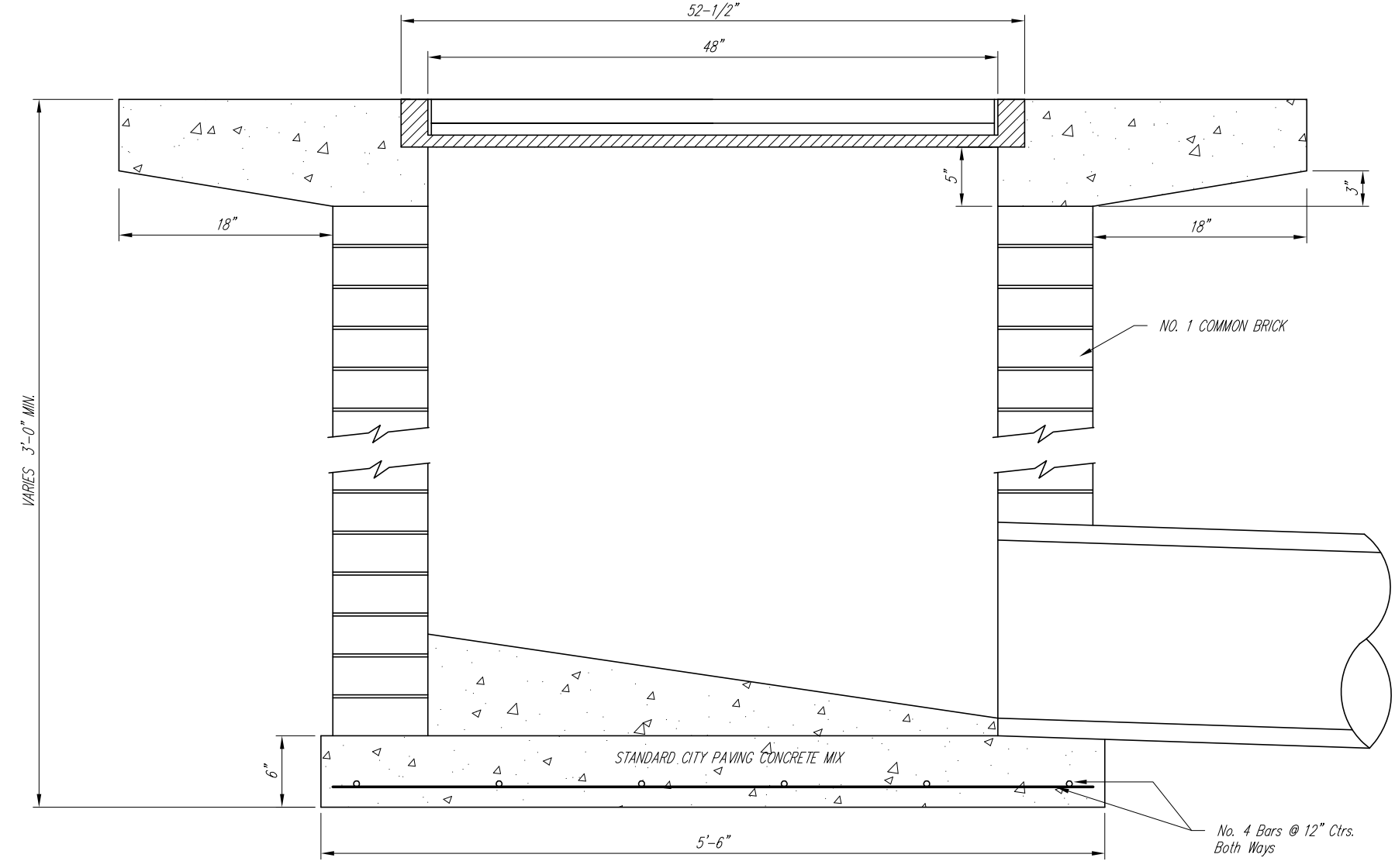
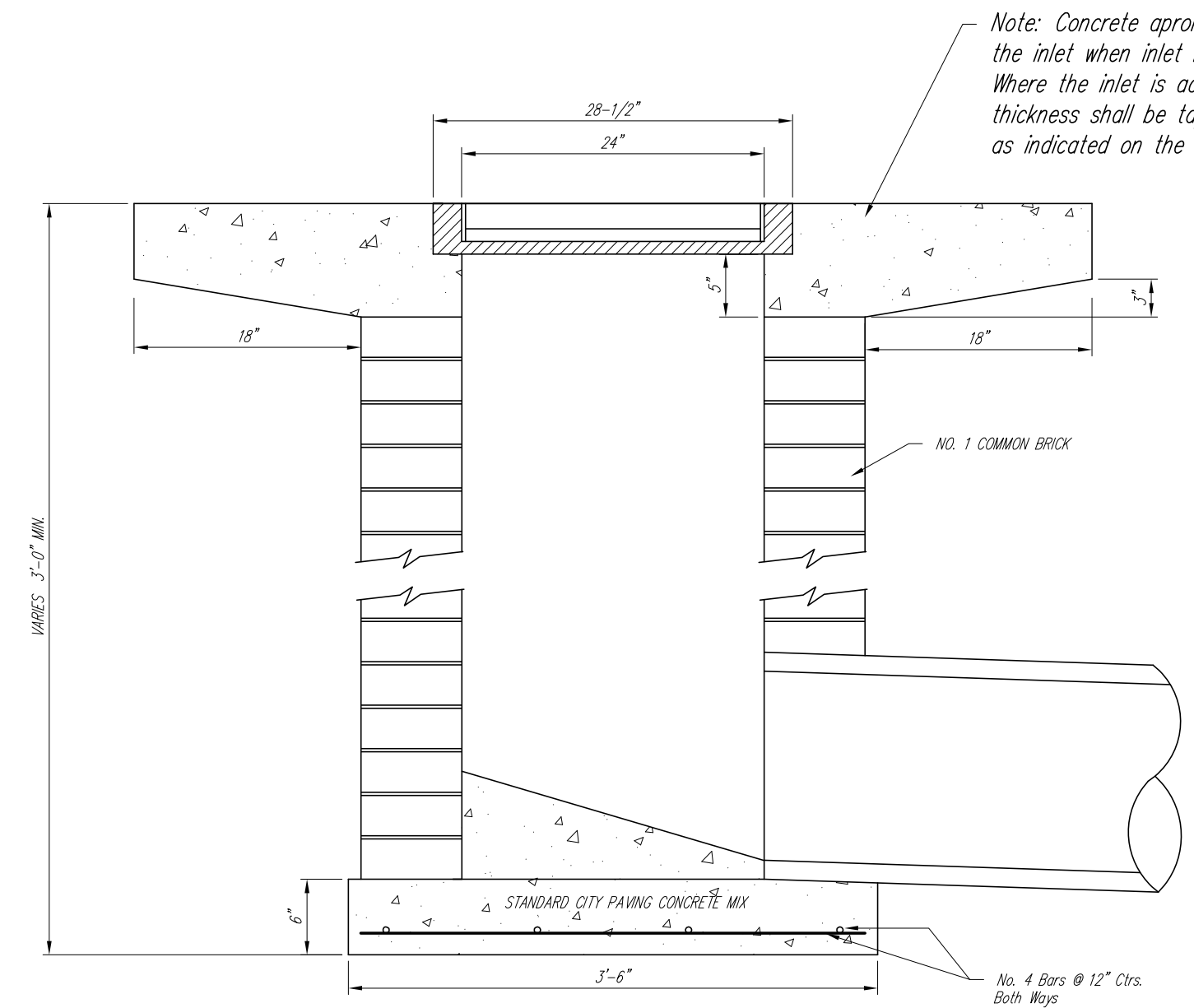
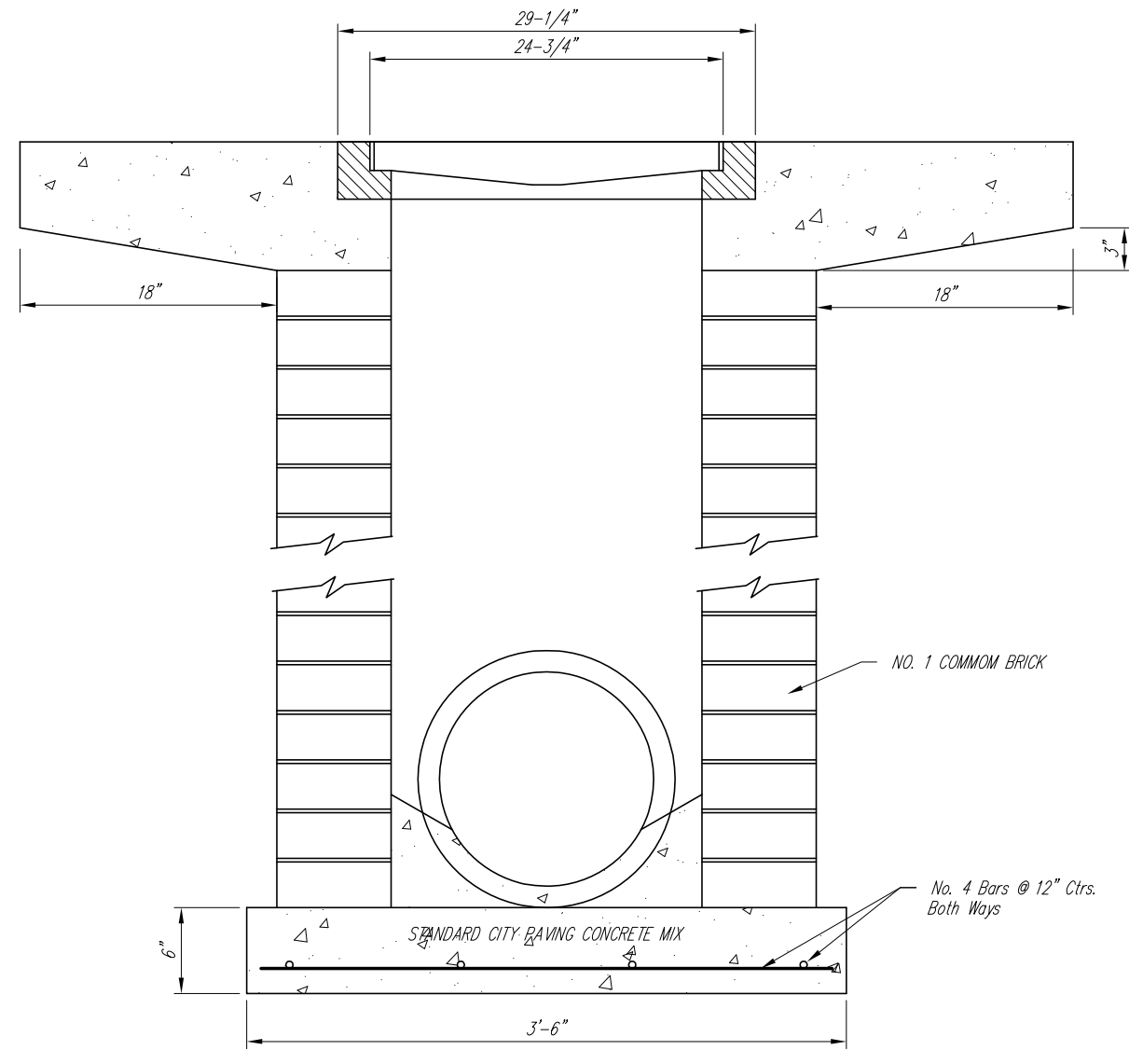


NOTE: Grates shall be imprinted on the top surface with "CITY OF WICHITA" using letters at least 1" in height. Other marking methods may be approved by the engineer.

DEETER #2433 GRATE
24" x 24" Frame and Grate Detail



DEETER #2434 FRAME
Requires Two Grates
Double 24" x 24" Frame Detail



<p>THE CITY OF WICHITA</p> <p>CITY ENGINEER'S OFFICE 455 NORTH MAIN STREET WICHITA, KANSAS 67202 (316) 268-4501 (316) 268-4114 FAX</p>	DROP INLET 2'x2' / 2'x4'	
	PROJECT NUMBER	OCA #
	DATE MAR 96	SHEET D7 OF D15