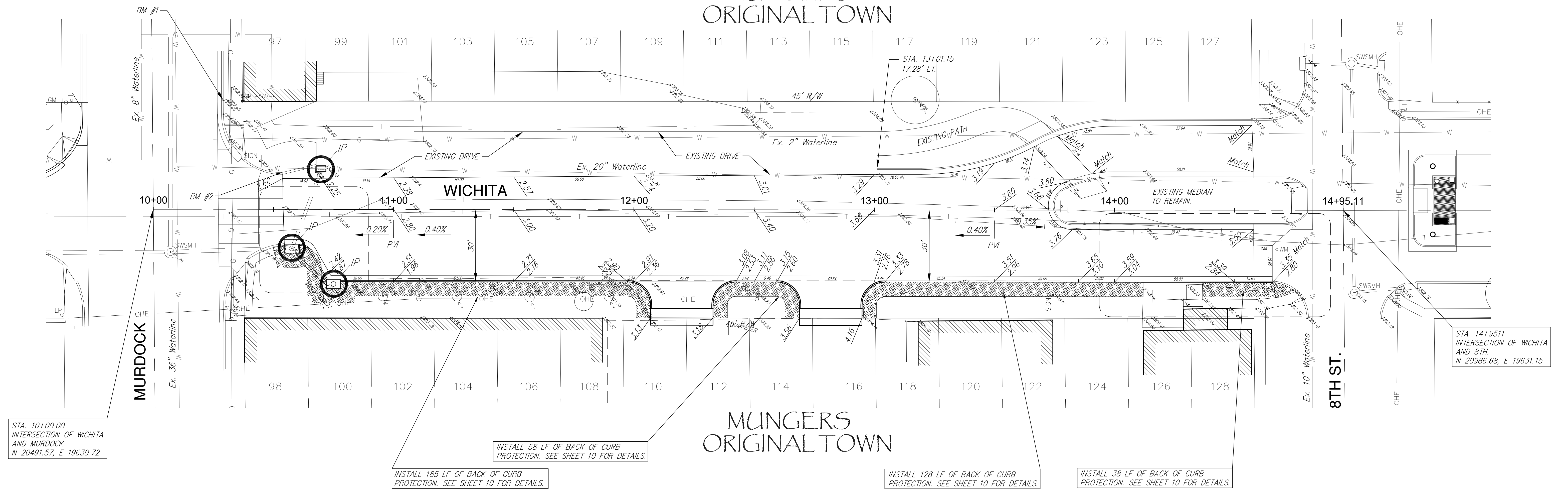


MUNGERS ORIGINAL TOWN



SEED NOTES

- ALL DISTURBED GROUND WILL BE FINAL GRADED AND PERMANENTLY SEEDDED WITHIN 14 DAYS OF COMPLETION OF WORK.
- BUFFALO GRASS SEED SHALL BE LOCALLY AVAILABLE CODY OR TEXOKA VARIETIES. SEED AT 3 LBS/ 1000 SF FOR NEW LAWN AREAS AND DISTURBED AREAS ALONG THE ROADWAY. APPLY PURE NITROGEN FERTILIZER AT A RATE OF 2 LBS/ 1000 SF.
- BUFFALO GRASS SEED MIXTURE SHALL BE FRESH, CLEAN NEW CROP SEED. LANDSCAPE CONTRACTOR SHALL PROVIDE LANDSCAPE ARCHITECT WITH DEALER'S GUARANTEED STATEMENT OF COMPOSITION OF MIXTURE AND PERCENTAGE OF PURITY AND GERMINATION OF SEED USED.
- LANDSCAPE CONTRACTOR TO DRILL BUFFALO GRASS SEED WITH A DRILL SPECIFICALLY SUITED FOR SEEDING NATIVE PRAIRIE GRASSES. PLANT SEED NO DEEPER THAN 1/2" BELOW SURFACE.
- PROTECT SEEDDED AREAS FROM EROSION BY SPREADING WEED-FREE STRAW MULCH TO FORM A CONTINUOUS BLANKET 1-1/2" LOOSE DEPTH AND CRIMP IN TO SOIL BY SUITABLE METHODS.
- PROTECT SWALES AND AREAS OF CONCENTRATED STORM WATER RUNOFF FLOWS WITH EROSION CONTROL BLANKET (CUREX I OR APPROVED EQUAL). SECURE BLANKET OVER SEEDBED USING MANUFACTURER'S RECOMMENDATIONS. EROSION CONTROL BLANKET SHALL BE 100% STRAW MATRIX WITH MATERIAL WITH DEGRADABLE NET. EROSION CONTROL BLANKET SHALL BE SUBSIDIARY TO THE SEEDING BID ITEM.
- SEED BUFFALO GRASS DURING THE SEED DATES LISTED BELOW. IF SEEDING CANNOT OCCUR DURING THESE DATES, THEN TEMPORARY SEEDING OF ANNUAL RYE SHALL BE PLACED IN THOSE AREAS AT A RATE OF 5 LBS/ 1000 SF UNTIL THE FOLLOWING SEASON. IF SEEDING OCCURS DURING SUMMER MONTHS AFTER MAY 15TH AND PRIOR TO SEPTEMBER 15TH, ADDITIONAL WATERING MAY BE NECESSARY FOR ESTABLISHMENT. PERMANENT SEEDING SHALL BE PAID AS SQUARE YARDS "PERMANENT SEEDING". TEMPORARY SEEDING SHALL BE CONSIDERED SUBSIDIARY TO THE COST OF PROJECT SEEDING. COSTS OF DELAYED PERMANENT SEEDING SHALL BE CONSIDERED SUBSIDIARY TO THE PROJECT SEEDING.
 OPTIMUM SEED DATES: APRIL 1- APRIL 20
 ACCEPTABLE SEED DATES: MARCH 1- MAY 15
- SEEDING PROCESS: BEGINNING AS EARLY IN MARCH AS POSSIBLE, TILL ENTIRE AREA TO BE SEEDDED TO DESTROY EXISTING VEGETATION AND LEAVE A FIRM, FRIABLE SEEDBED. TILL AREA TO BE SEEDDED IN THREE SUCCESSIVE SHALLOW TILLINGS, APPROXIMATELY TWO WEEKS APART TO REMOVE ALL DEAD PLANT MATERIAL AND NEW GROWTH WEEDS. DO NOT TILL DURING WET WEATHER WHEN RUTTING MAY BE A PROBLEM.

BENCHMARK #1:
 T.C. WEST RETURN @ NW COR. WICHITA & MURDOCK.
 ELEV. = 1302.62

BENCHMARK #2:
 LETTER "T" OF "RITCHIE" STAMP ON NORTH RETURN OF NW CORNER OF MURDOCK AND WICHITA.
 ELEV. = 1303.01

BACK OF CURB PROTECTION

INLET PROTECTION

PAVING IMPROVEMENTS, WICHITA STREET EROSION CONTROL PLAN WICHITA, KANSAS		DESIGN PSB	RUGGLES & BOHM ENGINEERING, SURVEYING, LAND AND PLANNING 924 North Main Wichita, Kansas 67203 www.rbkansas.com	(316) 264-8008 (316) 264-4621 fax E-mail: info@rbkansas.com	DRAWN MLP	PROJECT NUMBER 472-84796
		REVIEW			UTILITY	
					DATE July 14, 2009	
DRAWING FILE BASE {PLAN}				SHEET 9 OF 12		