

Note:  
Records indicate the existing 20" sewer line is VCP lined with a polyethylene liner.

Plug 8" SS (NW)  
Abandon Ex. 8" SS (Sweep in Place Approx. 67 L.F.)

N-264710, E-204824  
Sta. 0+00.00, Begin SS Line 1  
Construct Std. Type "P" Manhole (5' Dia.)  
Over Existing 20" SS Pipe Coat With Approved Lining  
Install Approx. 16 L.F. 20" Sewer Pipe North

N-467482, E-1053919,  
Remove Ex. Brick Manhole & Connect to Ex. 20" Pipe with Dresser Style Coupling.

N-465771, E-10489771,  
Sta. 0+42.48, SS Line 1  
Remove Ex. Brick Manhole

Remove Ex. 8" SS Pipe (Approx. 220 L.F.)

N-465361, E-1031968,  
Sta. 2+19.61, SS Line 1  
Remove Ex. Brick Manhole  
Construct Std. Shallow Type "P" Manhole (4' Dia.)  
Top Elev. = 1293.16

Remove Ex. 8" SS Pipe (Approx. 11 L.F.)

N-464125, E-1031966,  
Sta. 2+31.00, End SS Line 1  
Remove Ex. Brick Manhole  
Construct Std. Shallow Type "P" Manhole (4' Dia.)  
Top Elev. = 1293.58

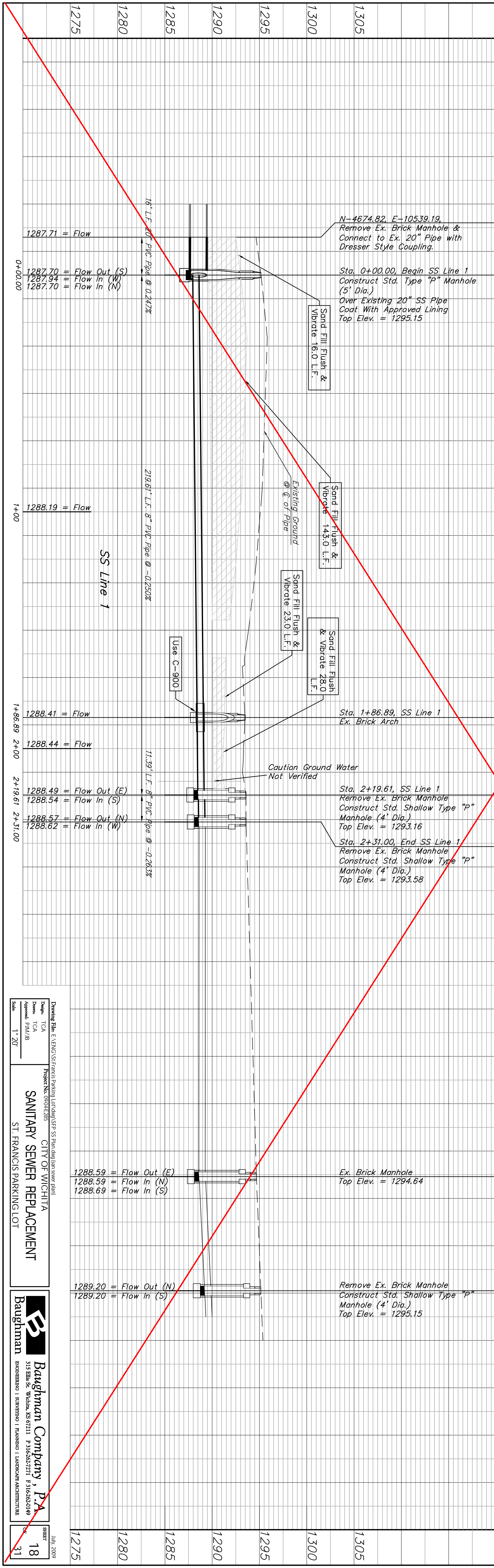
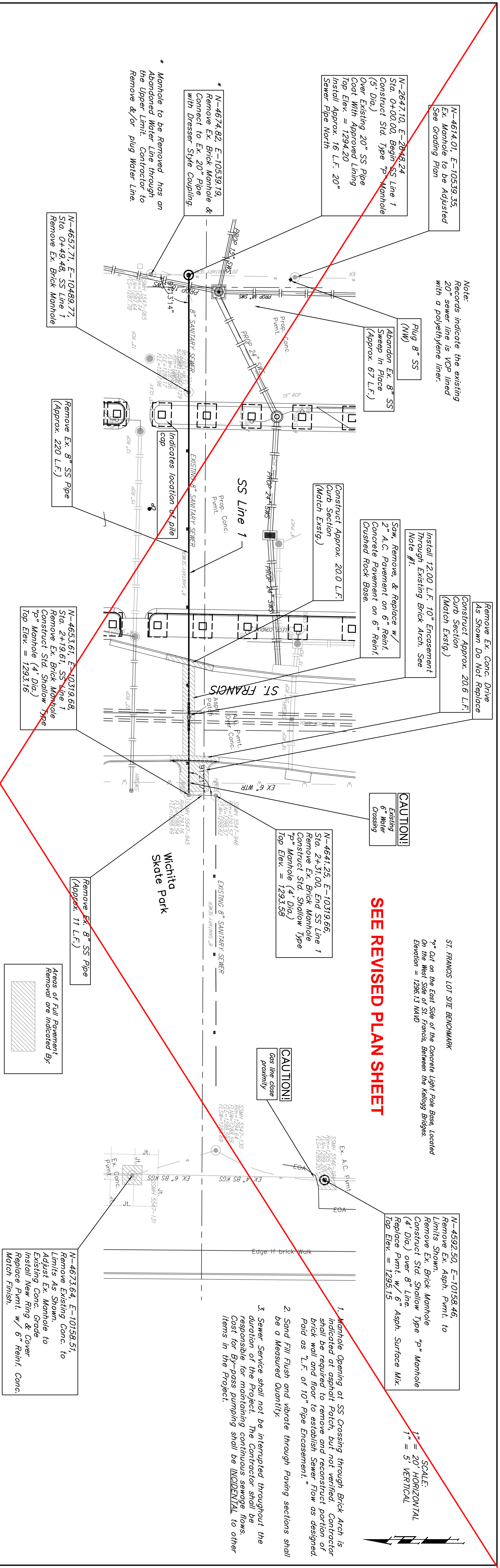
**SEE REVISED PLAN SHEET**

ST. FRANCIS LOT SIE BENCHMARK  
\* On the East Side of the Concrete Light Pole Base, Located on the West Side of St. Francis, between the Kellogg Bridges.  
Elevation = 1286.15 MVD

N-459250, E-1015846,  
Remove Ex. Asph. Pmt. to Limits Shown  
Construct Std. Shallow Type "P" Manhole (4' Dia.) over 8" Line.  
Replace Pmt. w/ 6" Asph. Surface Mix.  
Top Elev. = 1295.15

1. Manhole Opening of SS Crossing through Brick Arch is indicated at asphalt Patch, but not verified. Contractor shall be required to remove and reconstruct portion of brick wall and floor to establish Sewer Flow as designed. Paid as "L.F. of 10" Pipe Encasement."
2. Sand Fill Flush and vibrate through Paving sections shall be a Measured Quantity.
3. Sewer Service shall not be interrupted throughout the duration of the Project. The Contractor shall be responsible for maintaining continuous sewage flows. Cost for By-pass pumping shall be INCIDENTAL to other items in the Project.

SCALE:  
1" = 20' HORIZONTAL  
1" = 5' VERTICAL



Drawing File: C:\ENGIN\STFrancisParkingLot\Drawn\SSP SS Plan.dwg (San Sewer plan)  
 Date: TCA  
 Design: TCA  
 Approved: PM/IB  
 Scale: 1"=20'  
**SANITARY SEWER REPLACEMENT**  
 CITY OF WICHITA  
 ST. FRANCIS PARKING LOT  
**Baughman Company, P.A.**  
 315 Blue St. Wichita, KS 67211 316-262-2771 316-262-0149  
 ENGINEERING | SURVEYING | PLANNING | LANDSCAPE ARCHITECTURE  
 SHEET 18  
 July, 2008