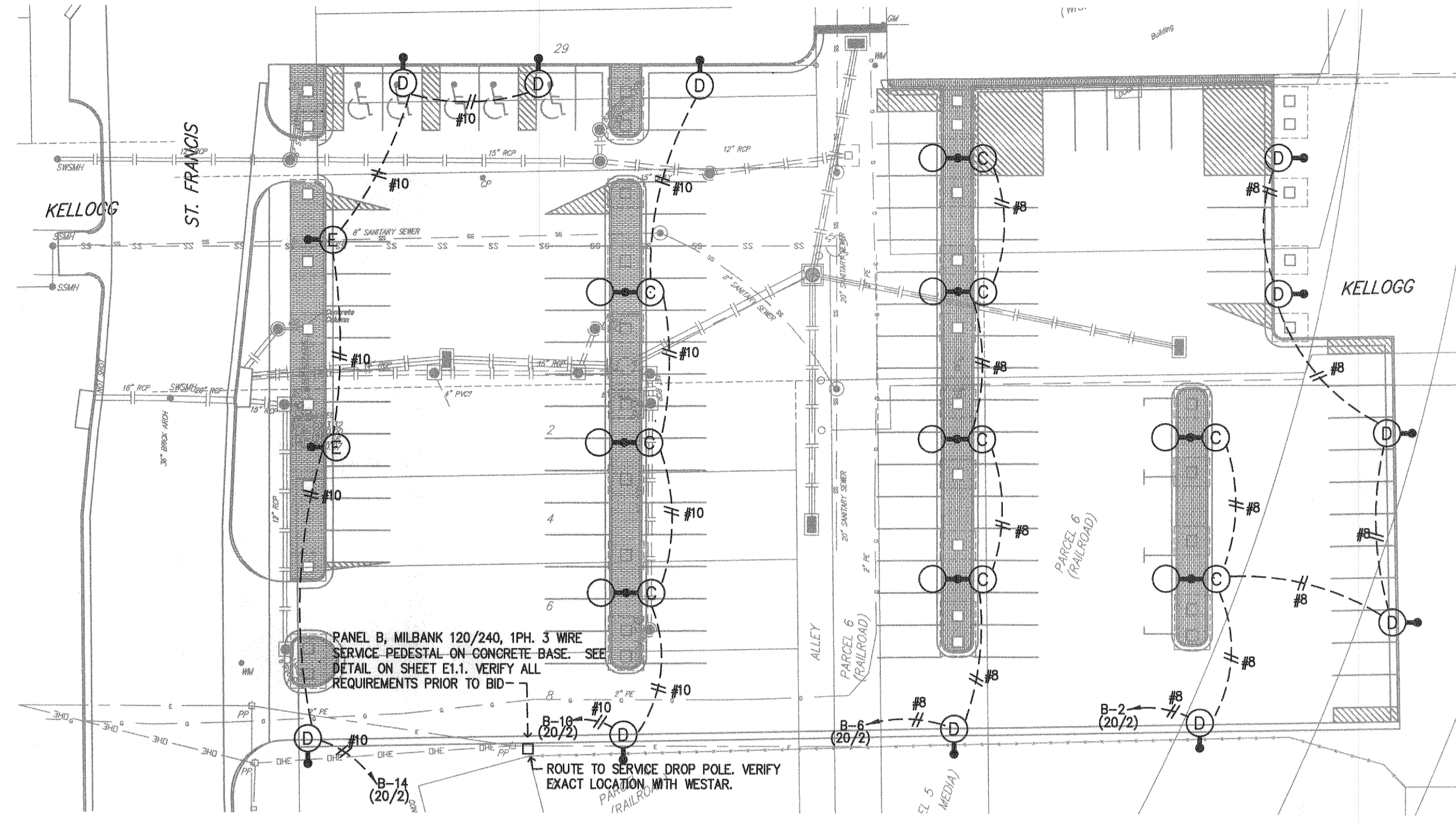
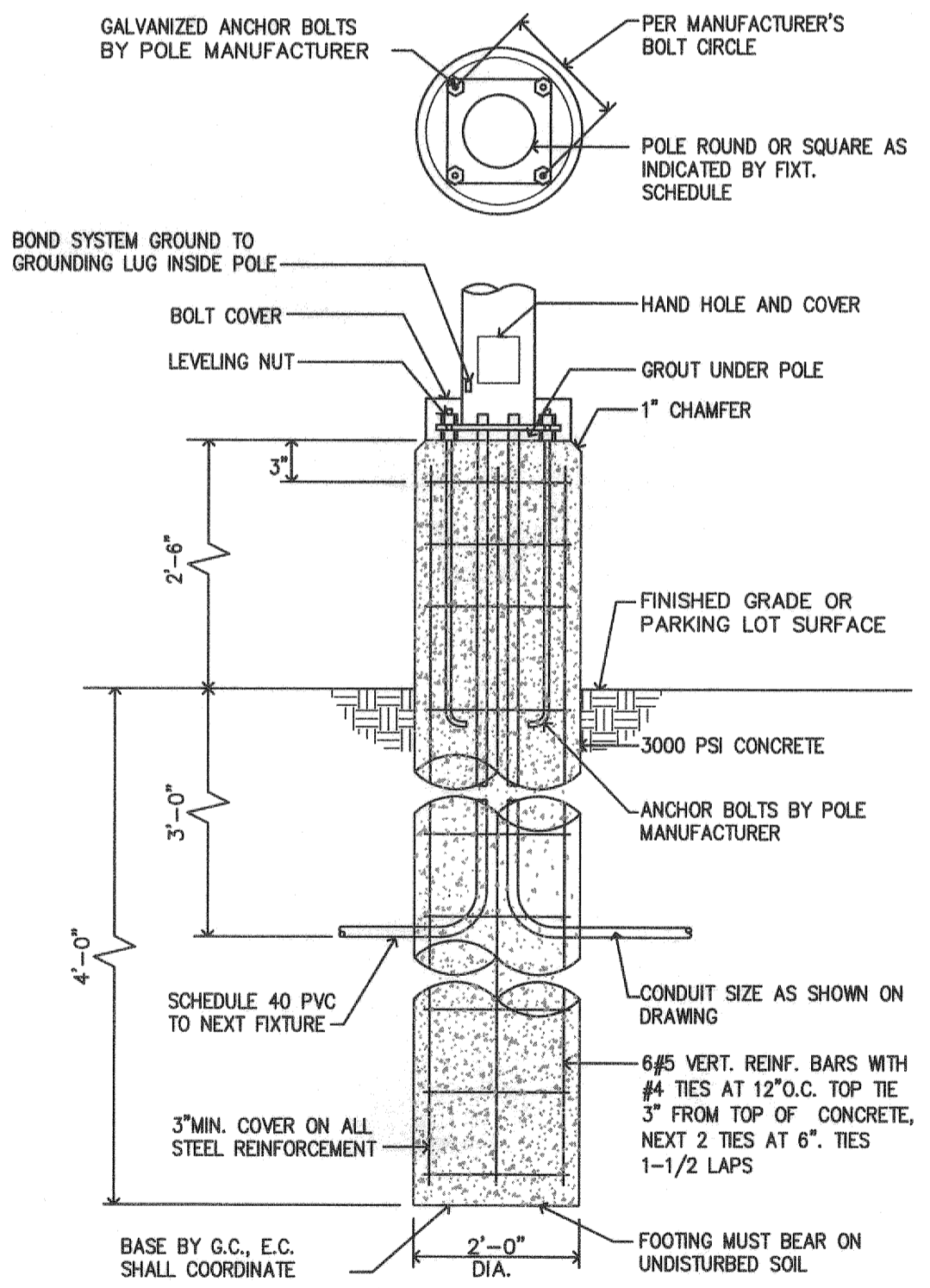


**TYPE "C" & "E" POLE BASE DETAIL**  
N.T.S.



**St Francis- Lighting Plan**  
Scale 1"= 30'-0"



**TYPE "D" POLE BASE DETAIL**  
N.T.S.

HANDHOLE IN POLE BASE, VERIFY WITH MANUFACTURER.  
SEE POLE BASE DETAIL FOR CONTINUATION

**LIGHT FIXTURE "A" DETAIL**  
NO SCALE

LIGHT FIXTURE SCHEDULE							
FIXT LTR	MANUFACTURER	CATALOG NUMBER	LAMPS NO. TYPE	FIXT. VOLT.	FINISH	MOUNTING	REMARKS
C	SPAULDING	(2)CR1-A-P25-H2-F-Q-BLX	2 250 HM	240V	BLACK	14' POLE	SEE DETAIL FOR FIXTURE AND POLE
D	SPAULDING	(1)CR1-A-P25-H2-F-Q-BLX	1 250 HM	240V	BLACK	14' POLE	SEE DETAIL FOR FIXTURE AND POLE
E	SPAULDING	(1)CR1-A-P25-H2-F-Q-BLX	1 250 HM	240V	BLACK	14' POLE	SEE DETAIL FOR FIXTURE AND POLE

**LIGHT FIXTURE SCHEDULE NOTES**

① MANUFACTURERS LISTED IN THIS SCHEDULE OR BY WRITTEN ADDENDUM WILL BE THE ONLY APPROVED MANUFACTURERS TO BID THE LIGHTING FIXTURES FOR THIS PROJECT. CONTRACTORS AND SUPPLIERS USING PRICING FROM MANUFACTURERS NOT LISTED ON SCHEDULE OR BY ADDENDUM DO SO AT THEIR OWN RISK.

② COORDINATE LOCATION OF TYPE "D" FIXTURE POLE BASES ON SOUTH PROPERTY LINE WITH THE FENCE CONTRACTOR

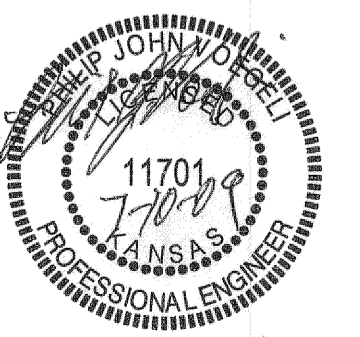
7/9/2009 4:00:27 PM  
M:\2009\09074.00 - 015 - Arena Parking\Electrical Files\09074.00 - E03.DWG

Drawing File: E:\eng\Intrust Bank Arena Parking Lots\Title and Note Page.dwg  
Project No. 0903-E274 CITY OF WICHITA

Design: ICE  
Drawn: ICE  
Approved: ICE  
Scale: As Shown

Intrust Arena Parking Lots  
St. Francis 1 Lighting Plan

**Integrated Consulting Engineers, Inc.**  
2604 W 9th St. Ste. 100 • Wichita, KS 67203  
316-264-3588 • 316-264-3948 • iceengineers.net



**Baughman Company, P.A.**  
315 Ellis St. Wichita, KS 67211 P 316-262-7271 F 316-262-0149  
ENGINEERING | SURVEYING | PLANNING | LANDSCAPE ARCHITECTURE

EXPIRES: 04-30-2011

SHEET **B20**  
OF **31**