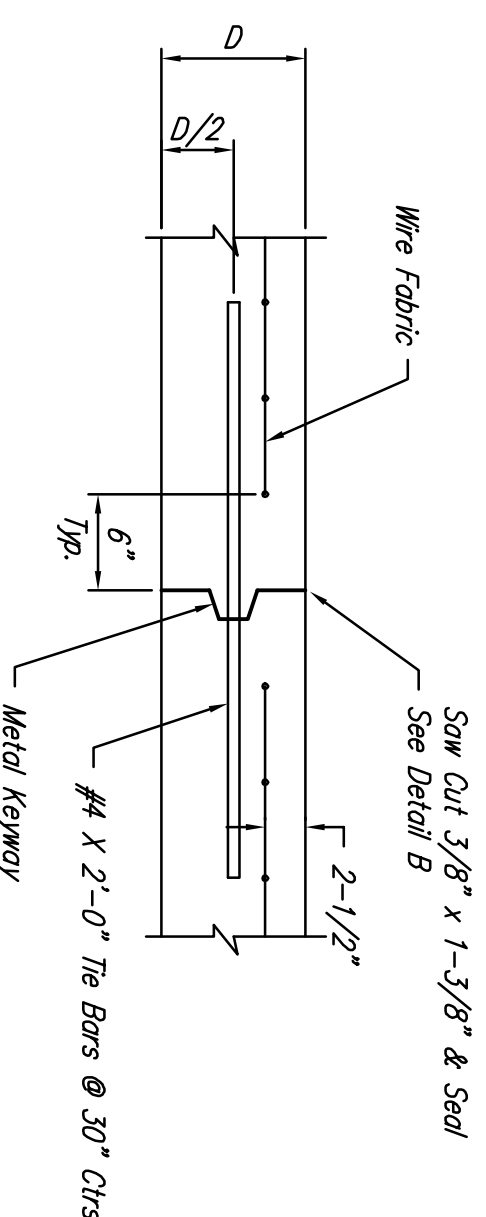
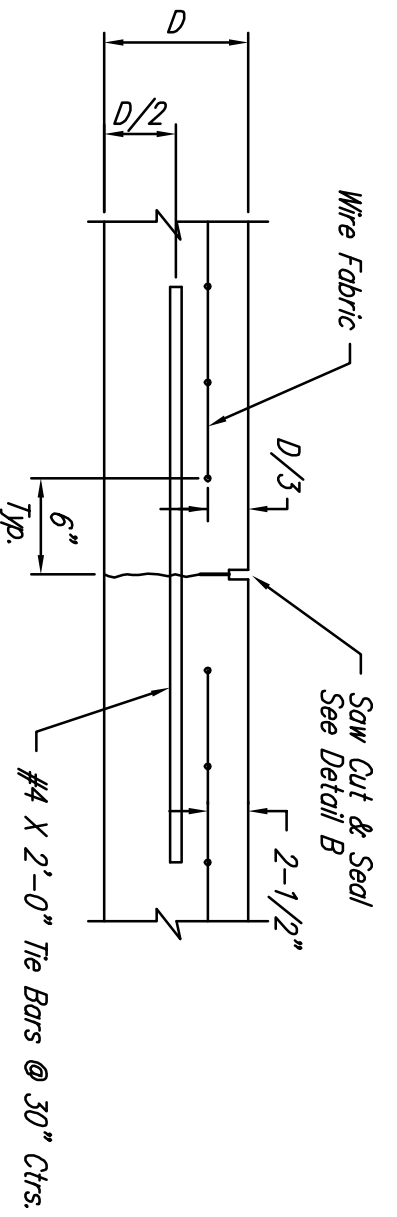


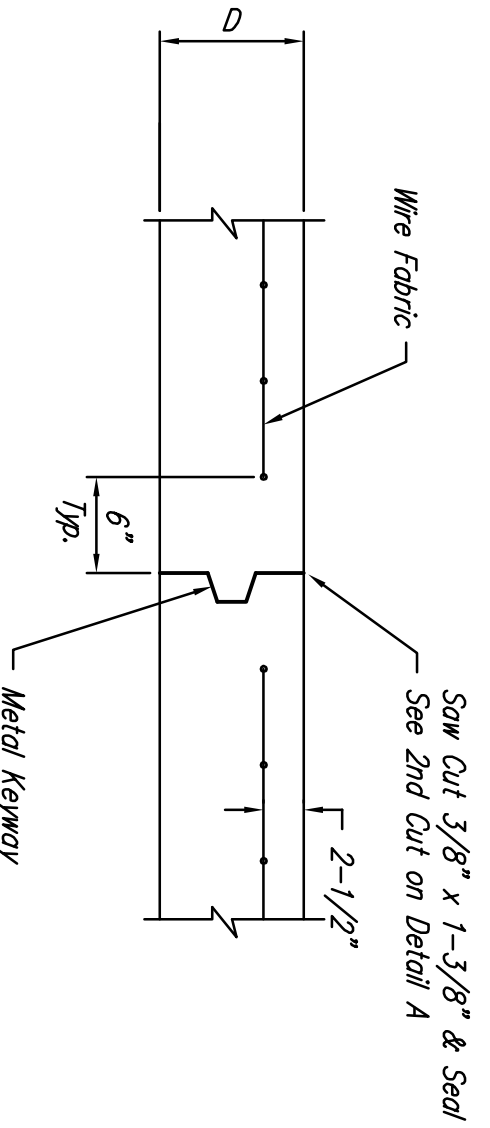
KEYWAY DETAIL



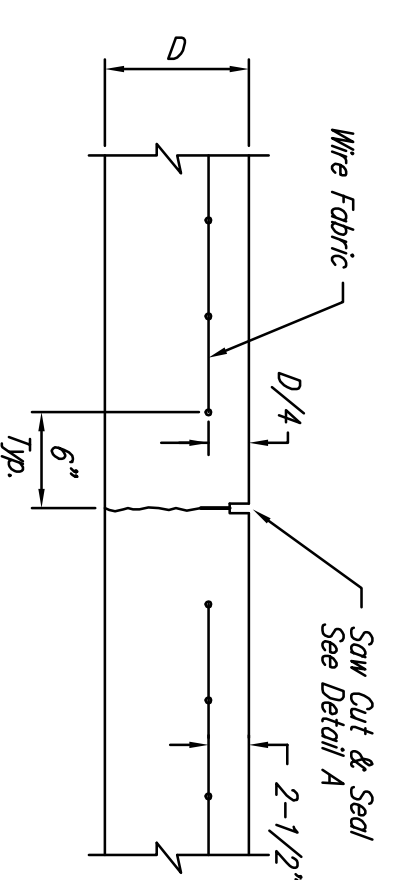
OPTIONAL LONGITUDINAL JOINT DETAIL (L.J.)
(CONSTRUCTION JOINT)



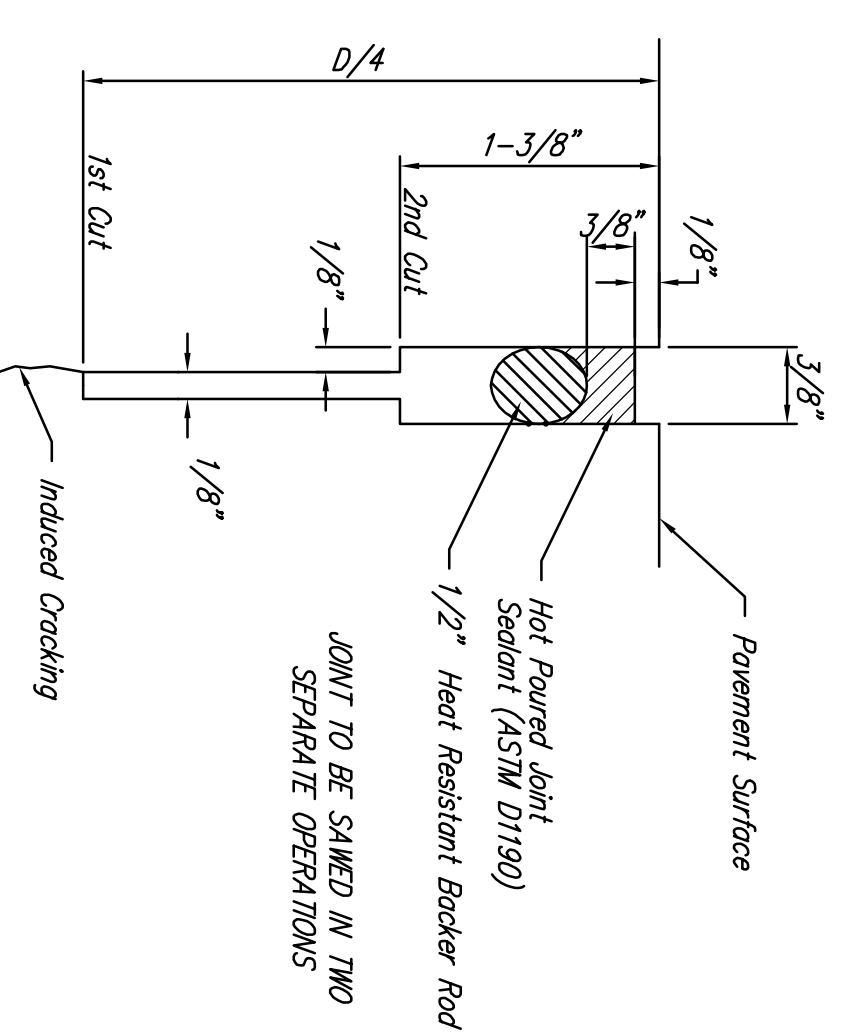
LONGITUDINAL JOINT DETAIL (L.J.)



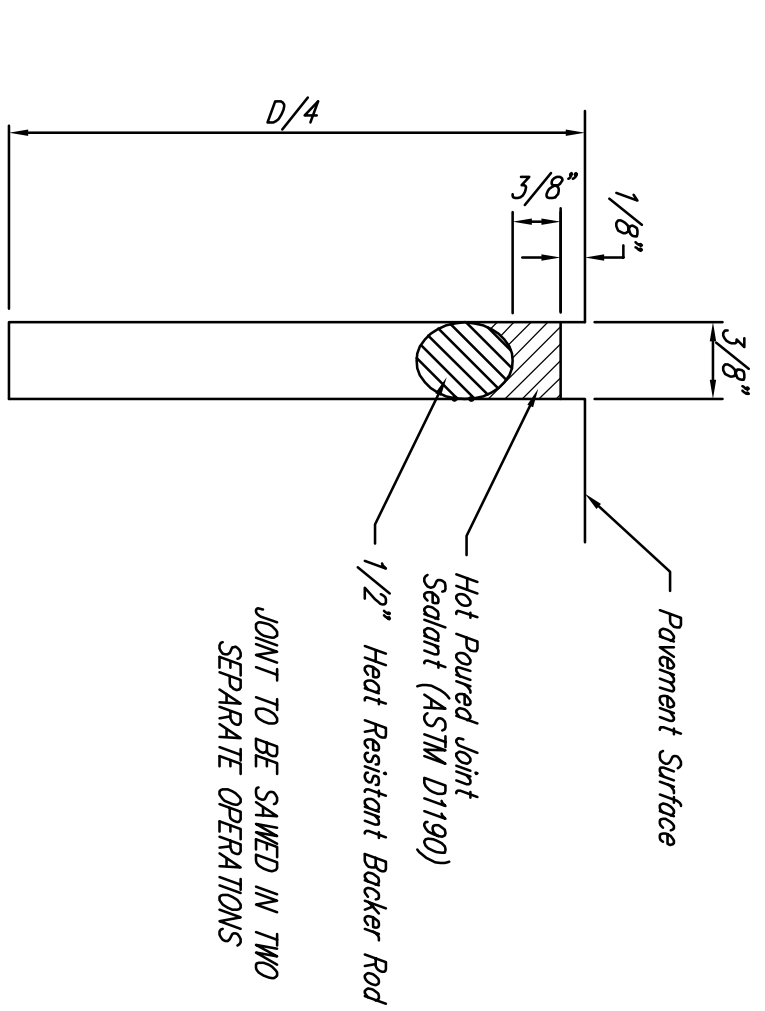
OPTIONAL CONTRACTION JOINT
(CONSTRUCTION JOINT)



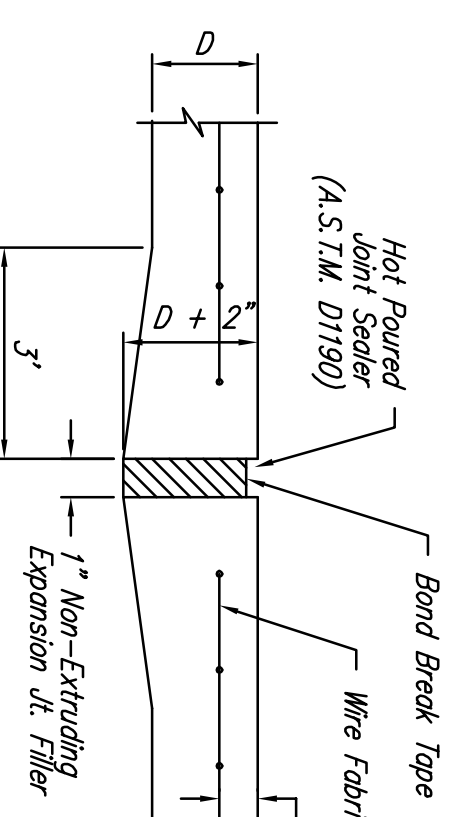
CONTRACTION JOINT DETAIL (C.J.)



SAW JOINT DETAIL "A"

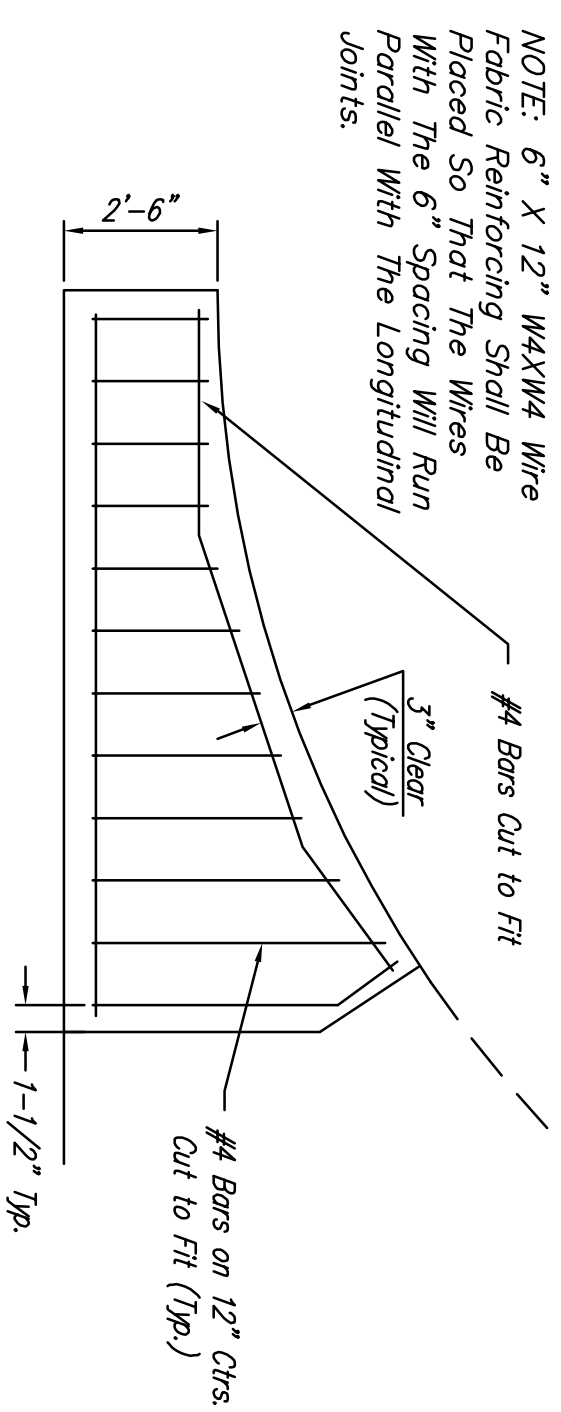


SAW JOINT DETAIL "B"



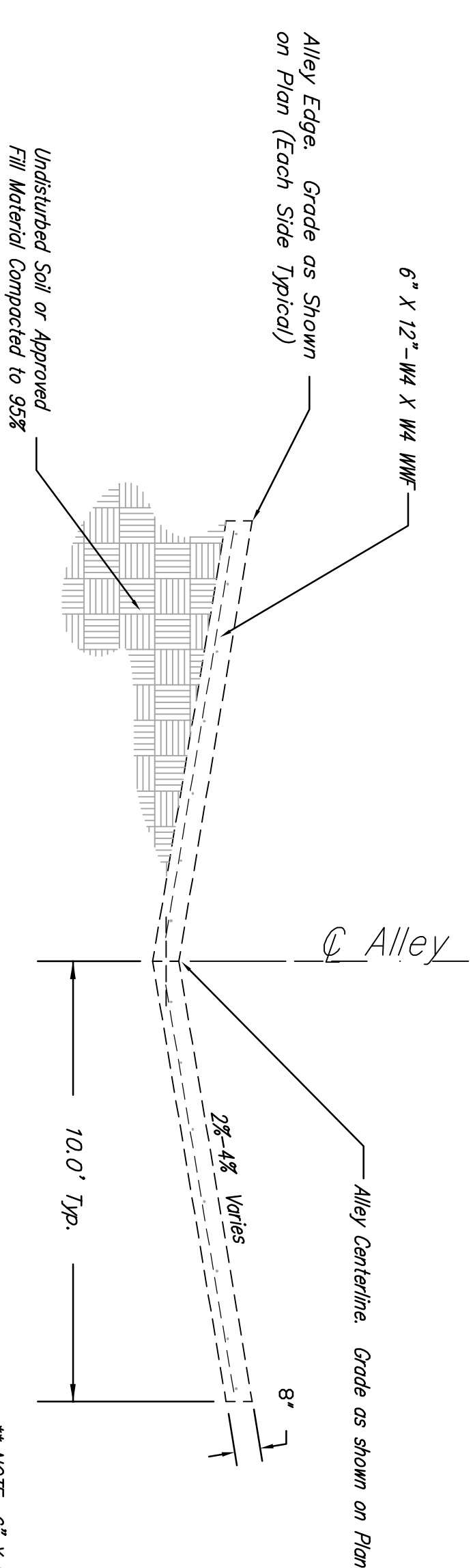
EXPANSION JOINT

NOTE: Extra thickness to be Subsidiary to Price of Square Yards Pavement



WING REINFORCING DETAIL

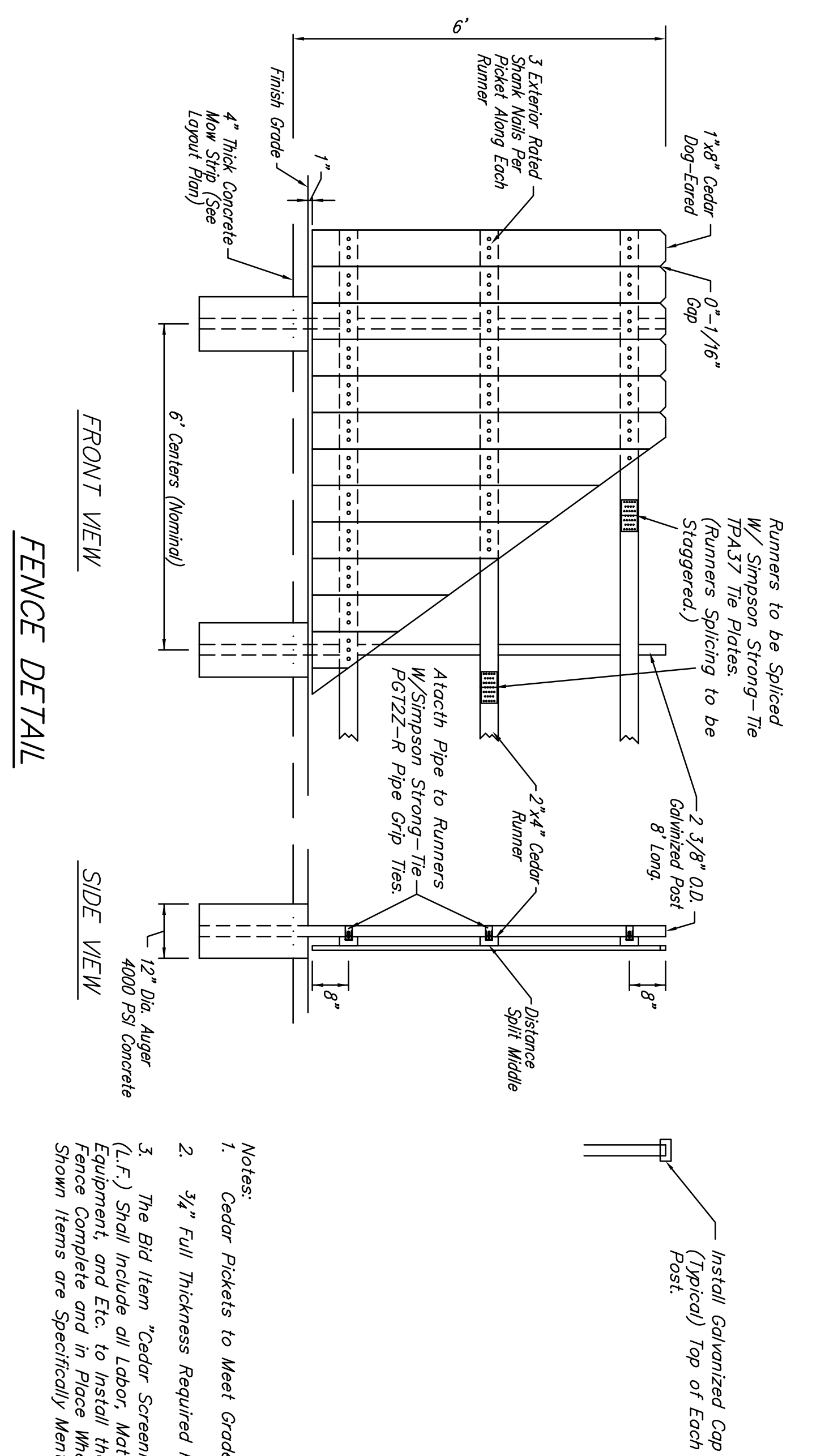
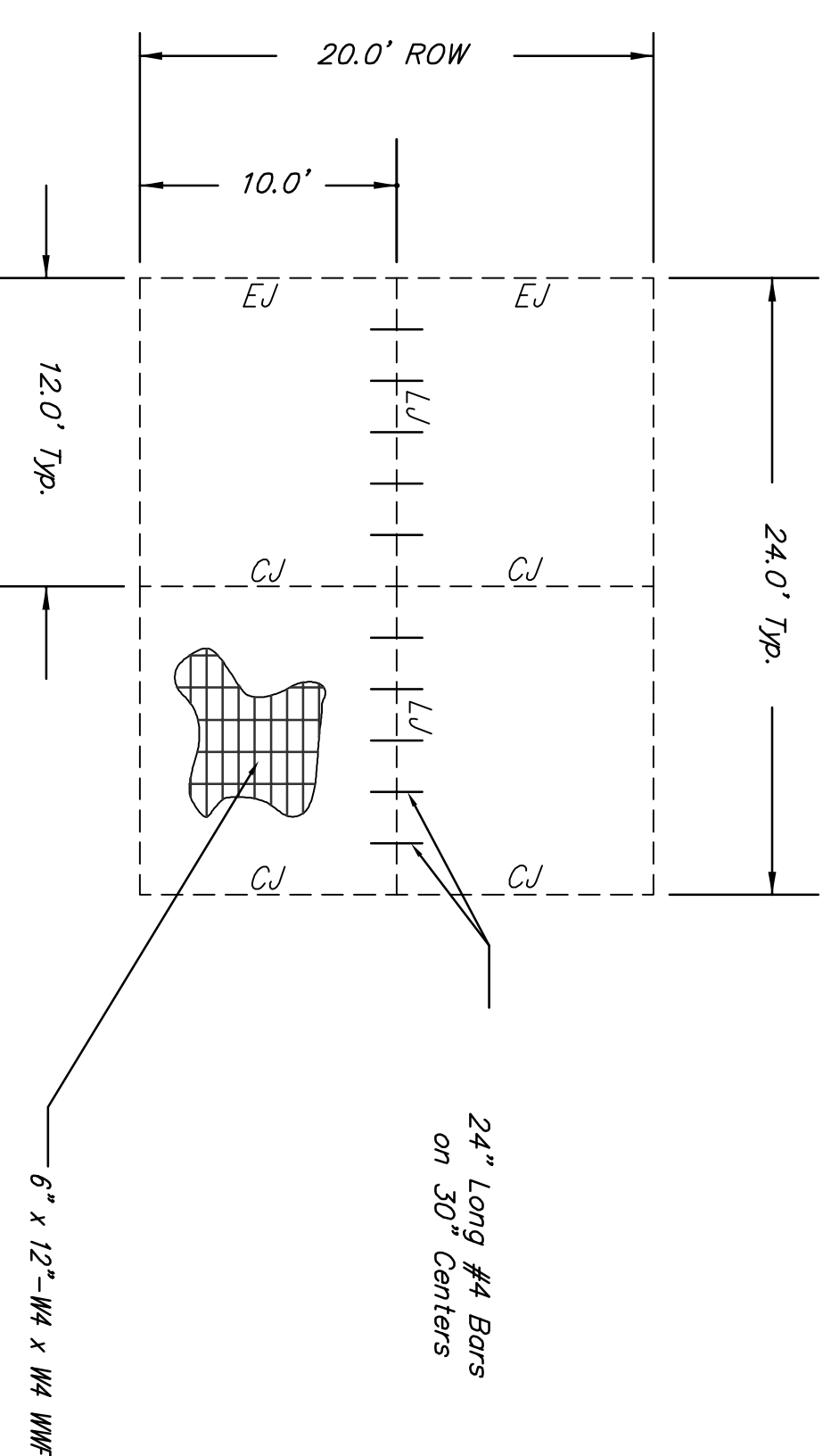
NOTE: 6" X 12" W4XW4 Wire Fabric Reinforcing Shall Be Placed So That The Wires Run Parallel With The Longitudinal Joints.



8" REINF. CONG. ALLEY PMT.
Not To Scale

NOTE: 6" X 12" W4XW4 Wire Fabric Reinforcing Shall Be Placed So That The Wires Run Parallel With The Longitudinal Joints

Note:
At Locations Where Alley Pavement Encroaches Existing Power Poles, Expansion Material Shall be Placed Around Each Pole to Full Pavement Depth.



FENCE DETAIL

Notes:
1. Cedar Pickets to Meet Grade #1 & Better.
2. 3/4" Full Thickness Required Pickets.
3. The Bit Item "Cedar Screening Fence" (L.F.) Shall Include all Labor, Materials, Tools, Equipment, and Etc. to Install the Screening Fence Complete and in Place Whether Side or Show Items are Specially Mentioned or Not.

Design File: E:\Vop\Unsub\Bark Area\Parking Lot\Detail\Veget\Detail 2.dwg	Drawn: BKB	Checked: TCA	Approved: JFB
Project No: 09032373	Scale: NONE		

CITY OF WICHITA
PAVING DETAILS
ARENA PARKING LOT

Baughtman Company, P.A.
ENGINEERING | SURVEYING | LANDSCAPE ARCHITECTURE
315 Bill St. Wichita, KS 67211 P: 316.262.7271 F: 316.262.0149