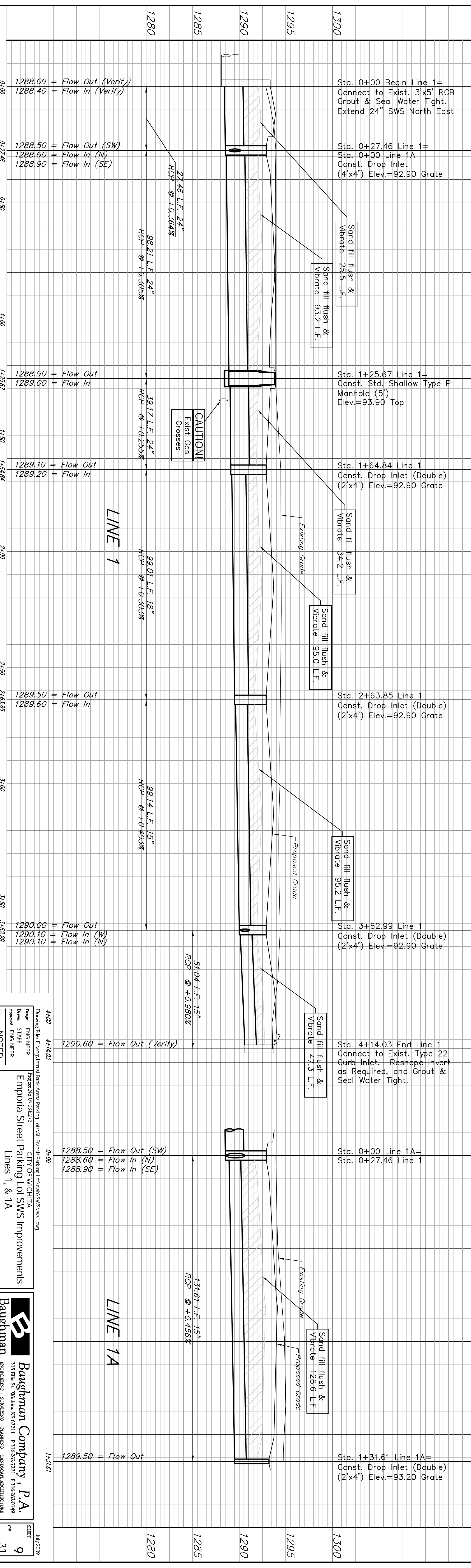
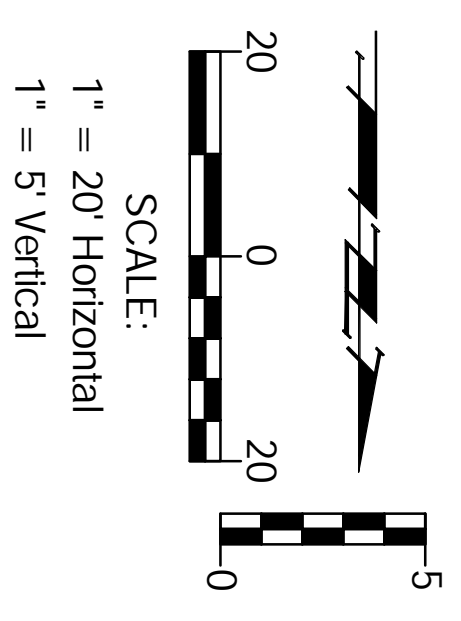


- * Notes:
1. 8" Gas Line Depths Provided by Gas Company.
 2. Contractor Shall Expose Gas Line Prior to SWS Construction.
 3. Contractor to Notify Engineer Immediately W/ Any Conflict or Discrepancy.
- Note: Sand fill flush & Vibrate to Be Installed Over Storm Pipe Through Paving Section. Paid as "Measured Quantity."
- X = SWS Structure to be Removed (See Demolition Plan)
 X = Trees to be Removed (See Demolition Plan)



Drawing File: E:\VirginiaBank Atrium Parking Lot\St. Francis Parking Lot\WVA\SWS\sws1.dwg
 Date: 4/14/03
 Engineer: [Redacted]
 Project No: 090303273
 CITY OF WICHITA
 Emporia Street Parking Lot SWS Improvements
 Lines 1, & 1A
 EMPORIA, KANSAS LOT
 Scale: NOTED
 July 2009
 9
 31