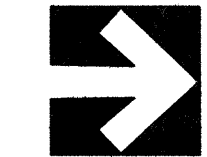


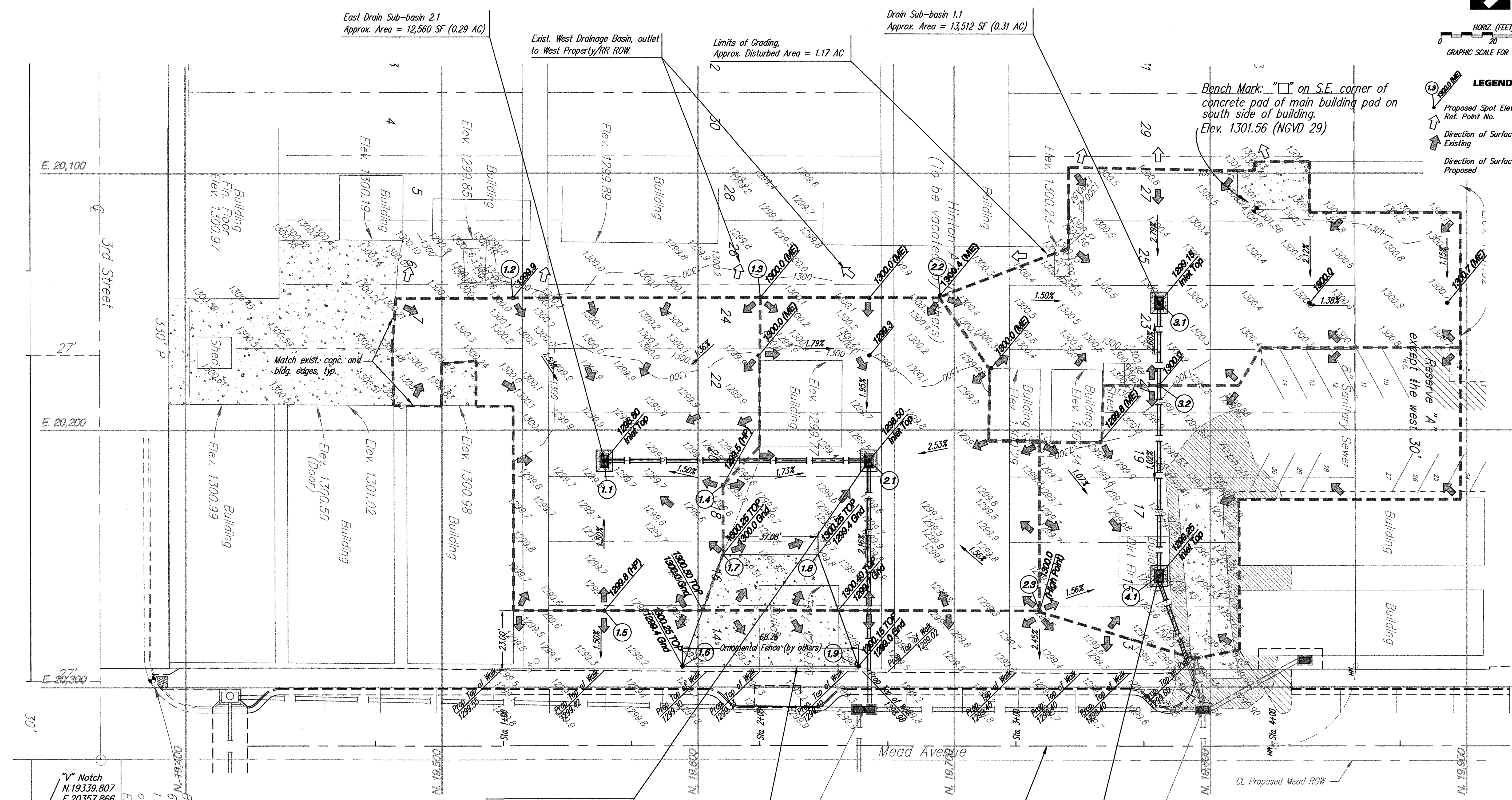
NORTH



HORIZ. (FEET)
GRAPHIC SCALE FOR 1" = 20'

LEGEND:

- Proposed Spot Elevation and Ref. Point No.
- Direction of Surface Runoff, Existing
- Direction of Surface Runoff, Proposed



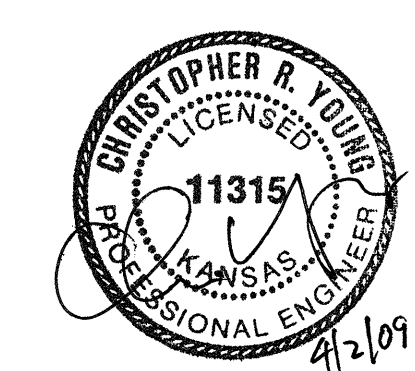
Bench Mark: "□" on S.E. corner of concrete pad of main building pad on south side of building.
Elev. 1301.56 (NGVD 29)

HORIZONTAL CONTROL TABLE:

POINT NO.	DESCRIPTION	NORTHING	EASTING	ELEVATION
1.1	CL Area Inlet	20,211.876	19,563.363	1298.80 TOP
1.2	Finish Grade	20,148.209	19,527.738	1299.9
1.3	Finish Grade	20,148.104	19,624.272	1300.0 (ME)
1.4	Finish Grade	20,221.294	19,609.685	1299.5 (HP)
1.5	Finish Grade	20,269.928	19,563.386	1299.8 (HP)
1.6	Finish Grade/SE Cor. Man.	20,291.851	19,593.852	1299.4 GND
1.7	Finish Grade	20,247.637	19,609.667	1300.0 GND
1.8	Finish Grade	20,247.622	19,646.751	1299.4
1.9	Finish Grade	20,291.823	19,662.602	1299.0 GND
2.1	CL Area Inlet	20,211.835	19,666.574	1298.50 TOP
2.2	Finish Grade	20,147.193	19,694.476	1300.4 (ME)
2.3	Finish Grade	20,269.943	19,733.294	1300.0
3.1	CL Area Inlet	20,150.078	19,779.919	1299.15 TOP
3.2	Finish Grade	20,182.503	19,779.932	1300.0
4.1	CL Area Inlet	20,256.206	19,779.962	1299.25 TOP

BENCHMARKS & SURVEY NOTES:

- Bench Mark: "□" on S.E. corner of concrete pad of main building pad on south side of building. Elev. 1301.56 (NGVD 29)
- Bench Mark: Cross cut in concrete 6.8'S and 0.8'W of the S.E. corner of Lot 12, Hinton's Subdivision of a Part of East Wichita, Kansas. Elev. 1298.96 (NGVD 29)
- Survey base map performed by Savoy Company, October 2008. "Mead Street Pavement and Storm Sewer Improvements" are shown for information only, field verify as-built conditions.
- Horizontal Coordinate Grid is based on Savoy Company survey base map datum.
 - Hilti Nail at center of 3rd Street and Washington. N.19375.337 E.20708.027
 - "V" Notch at southeast corner of 3rd Street and Mead. N.19339.807 E.20357.866



YOUNG & ASSOCIATES, P.A.
Professional Civil Engineering Consultants
100 S. Geologie, Derby, KS 67037
tel: (316)788-2552 fax: (316)788-4408 email: engineering@yngpa.com

SITE GRADING & EROSION CONTROL PLAN
YARD STORE
CITY OF WICHITA
Sedgwick County, Kansas

scale: as noted
drawn by: els
checked by: cry
date: 3/30/09
P/N: 08-258
revisions:

Sheet No.
2 of 5