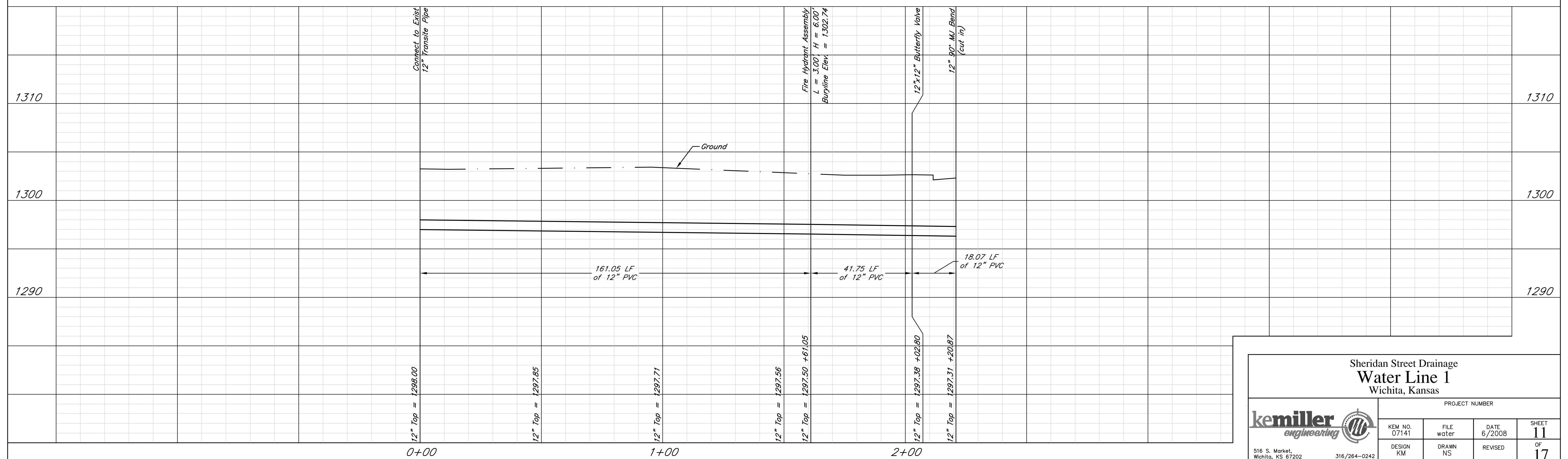
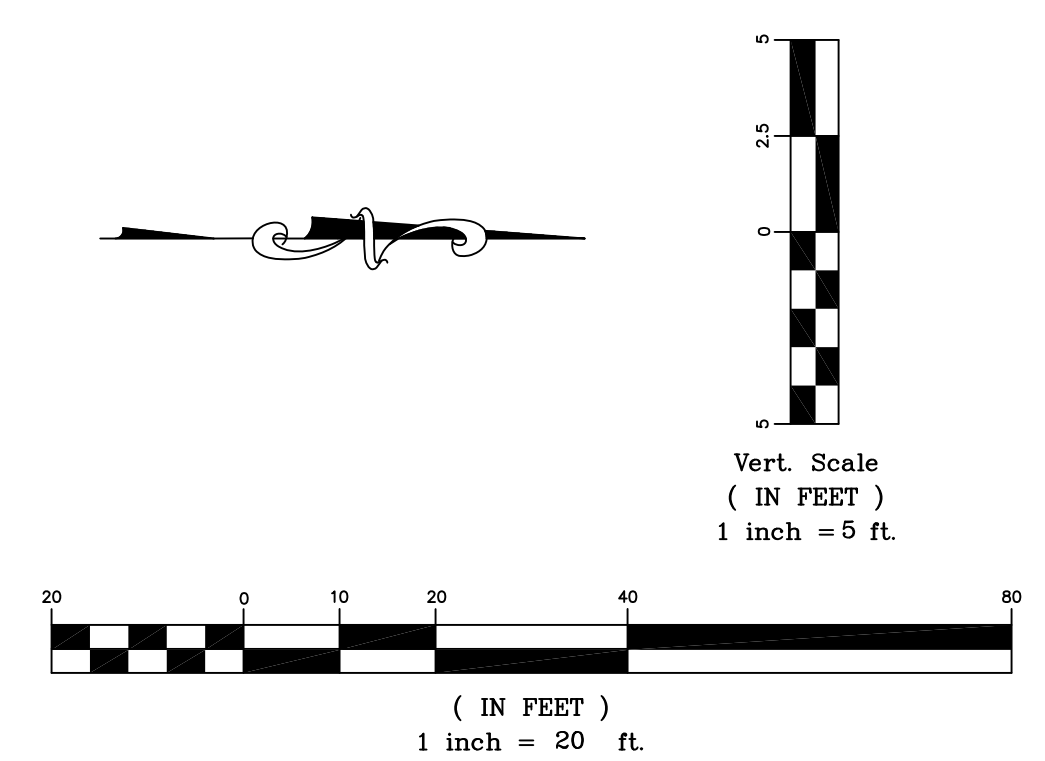
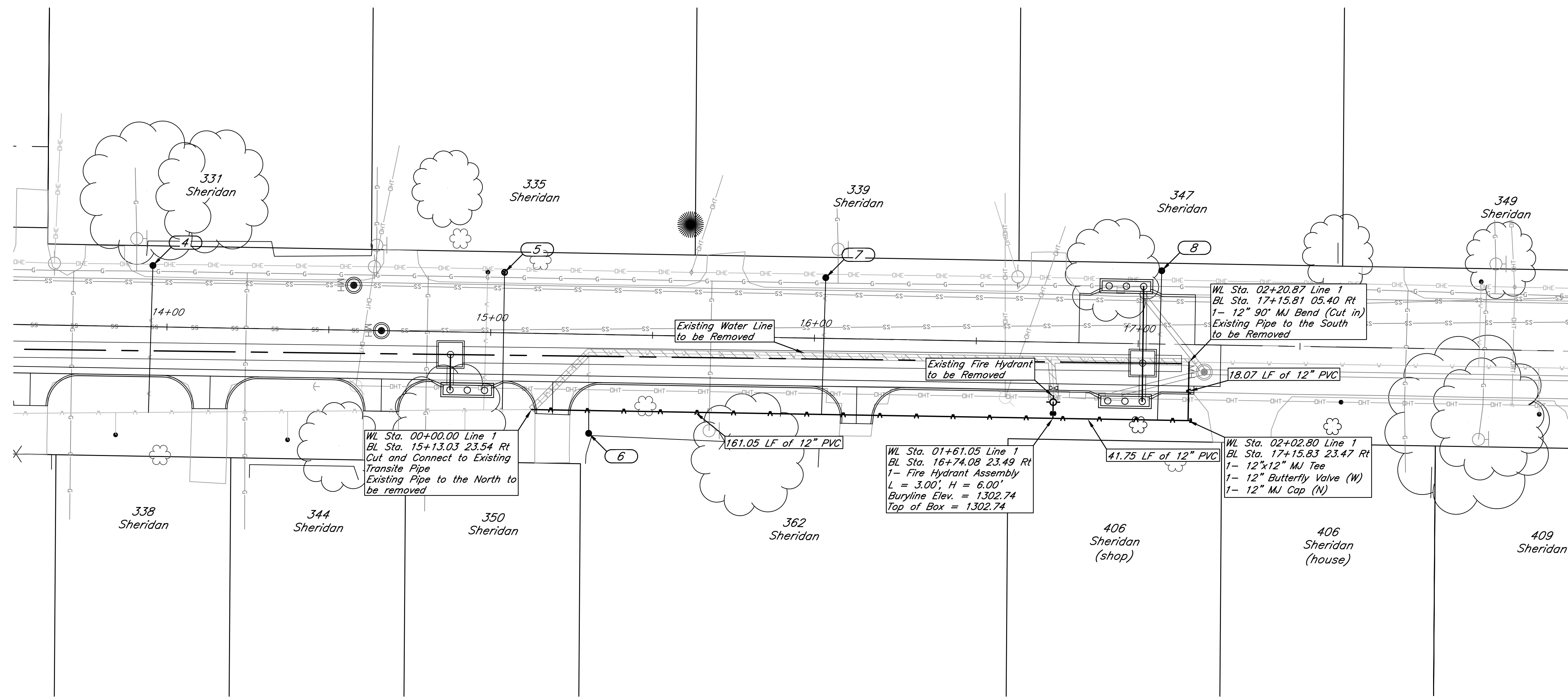


Service Number	BL Sta.	Lt./Rt.	Service (Long/Short)	Meter Size (inches)	Service Address
1	11+01.84	Lt	Long	0.63	3300 W 2nd St.
2	12+32.23	Lt	Long	0.63	311 Sheridan St.
3	13+16.39	Lt	Long	0.63	315 Sheridan St.
4	13+95.34	Lt	Long	0.63	335 Sheridan St.
5	15+03.98	Lt	Long	0.63	335 Sheridan St.
6	15+30.78	Rt	Short	0.63	362 Sheridan St.
7	16+03.18	Lt	Long	0.63	339 Sheridan St.
8	17+06.90	Lt	Long	0.63	347 Sheridan St.

**General Notes:**

- Quantities for Paving Items & Waterline Items will be paid by Measured Quantity.
- Replace all service meters effected by water line relocation.
- Drop off removed fire hydrant at City of Wichita Maintenance Facility located at 1801 South McLean.



Sheridan Street Drainage  
**Water Line 1**  
Wichita, Kansas

PROJECT NUMBER			
KEM NO. 07141	FILE water	DATE 6/2008	SHEET <b>11</b>
DESIGN KM	DRAWN NS	REVISED	OF <b>17</b>

516 S. Market, Wichita, KS 67202      316/264-0242