

STATE	PROJECT NO.	YEAR	SHEET NO.	TOTAL SHEETS
KANSAS				

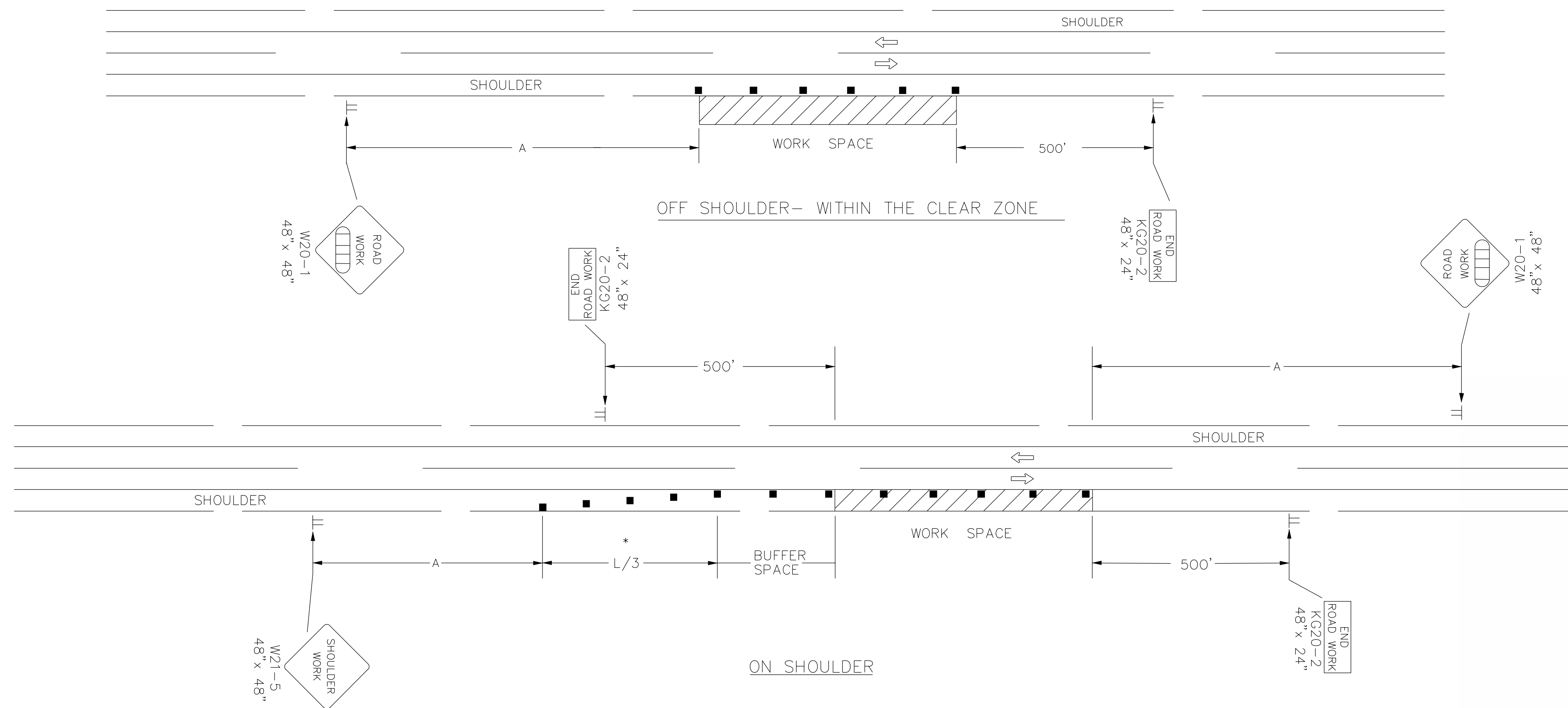
DATE	APPR
DESCRIPTION	MARK

REFER TO STD. TE710 FOR ADDITIONAL INFORMATION ON TEMPORARY TRAFFIC CONTROL SIGNS AND SIGN SPACING.
 REFER TO STD. TE702 FOR INFORMATION ON TAPERS AND CHANNELIZING DEVICES.
 REFER TO STD. TE700 FOR LENGTH OF BUFFER SPACE.

NOTE:

NO TRAFFIC CONTROL IS REQUIRED IF THE WORK SPACE IS LOCATED OUTSIDE OF THE CLEAR ZONE.

FOR OPERATIONS OF 60 MINUTES OR LESS, ALL SIGNS AND CHANNELIZING DEVICES MAY BE ELIMINATED IF A VEHICLE WITH HIGH-INTENSITY ROTATING, FLASHING, OSCILLATING, OR STROBE LIGHTS IS USED.



WHEN CONCRETE BARRIER SYSTEM IS USED, PORTABLE CHANNELIZING DEVICES ARE NOT NEEDED ALONG THE TANGENT BARRIER SECTION. DELINEATION ON THE BARRIER SYSTEM IS STILL REQUIRED. SEE RD622.

* OMIT TAPER IF PAVED SHOULDER IS LESS THAN 8' WIDE.

■ Channelizing Device
 □□□□ AHEAD, 1500 FT, OR 1 MILE

NO.	DATE	REVISIONS	BY	APP'D
3	8-8-07	G20-2 CHANGED TO KG20-2	M.B.	A.A.A.
2	12-29-05	UPDATED END ROAD WORK SIGN DESIGNATION	M.B.	A.A.A.
1	11-19-03	CHANGED BORDER	B.H.	S.A.B.

DESIGNED BY: Lawrence J. Sample, P.E.
 DWN BY: Staff
 CKD BY: MG
 APP BY: DWD
 FILE NAME: 561500000-C-TC-614.dgn
 AMEC PROJ. NO. 5-6150-0000

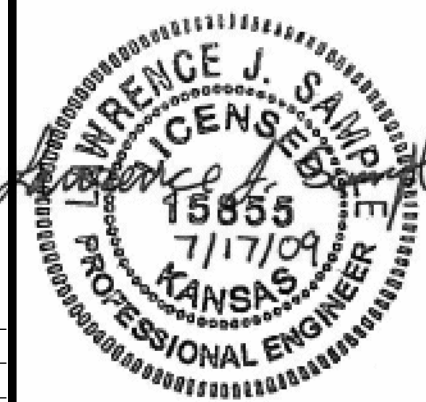
KANSAS DEPARTMENT OF TRANSPORTATION
 TYPICAL TRAFFIC CONTROL
 WORK ON OR NEAR THE SHOULDER
 UNDIVIDED HIGHWAY (2 OR 4 LANE)
 TE720 9/1/00

FWHA APPROVAL	8-8-07	APP'D	Anthony A. Alrobaire
DESIGNED	L.E.R.	DETAILED	B.A.H.
DESIGN CK.	DETAIL CK.	QUAN. CK.	TRACE CK.

amec
 AMEC Earth & Environmental, Inc.
 1129 SW Wainmaker
 Topeka, KS 66604
 Phone: (785) 272-6830
 Fax: (785) 272-6878



LEVEE L
 WICHITA-VALLEY CENTER LOCAL
 FLOOD PROTECTION PROJECT
 WICHITA, KANSAS
 PREPARED FOR
 THE CITY OF WICHITA, KANSAS



LEVEE L TYPICAL
 WORK ON SHOULDER
TC-6.14
 SHEET 38 OF 48