

# CONSTRUCTION PLANS FOR SWD 354 TO SERVE MAIZE 54 ADDITION TO THE CITY OF WICHITA, KANSAS

**JAMES L. ARMOUR, P.E. - CITY ENGINEER**

PROJECT NO. 468-84575  
OCA NO. 751483

IMPROVEMENT DISTRICT LEGAL DESCRIPTION

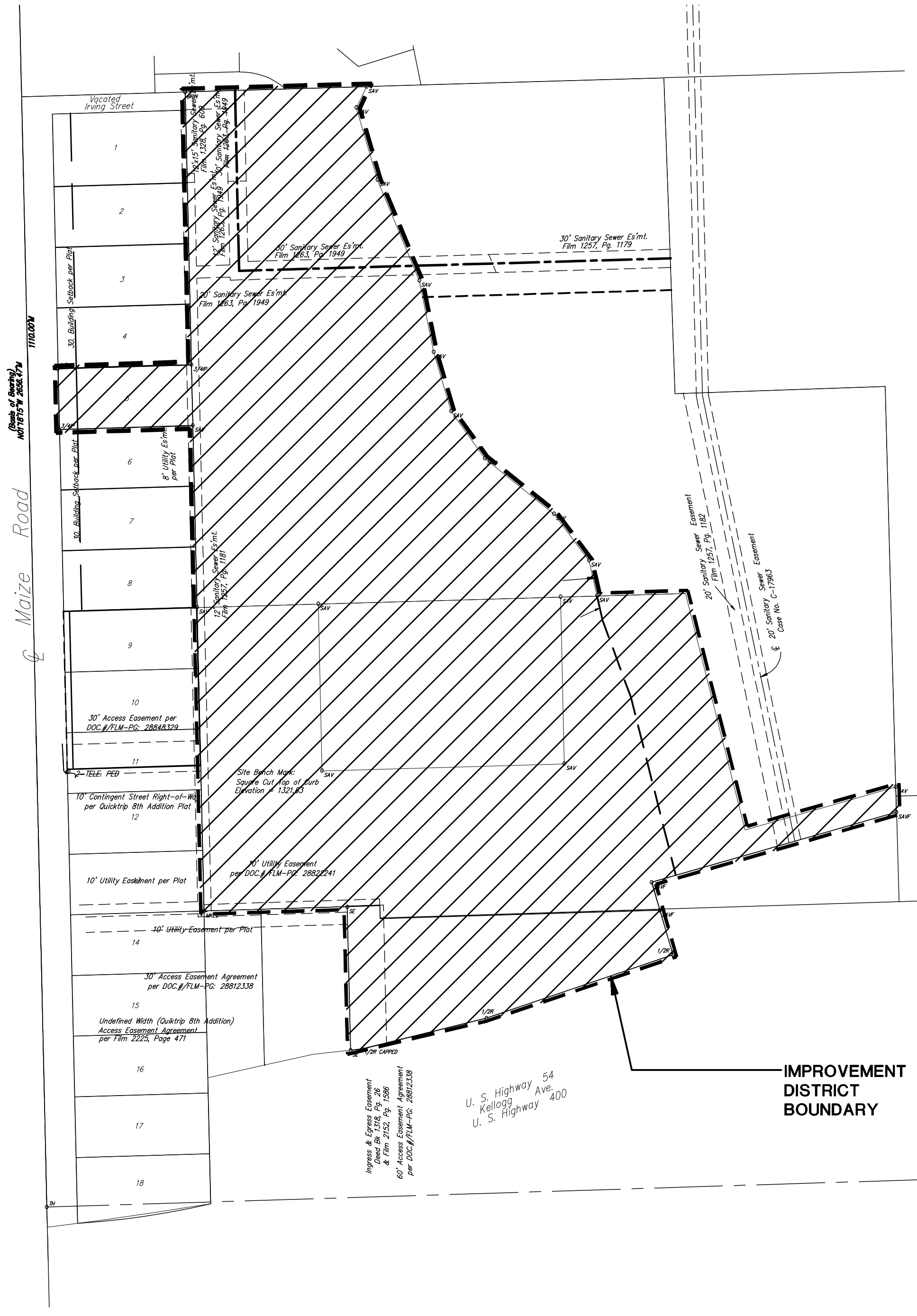
TRACT A

That part of the SW1/4 Section 29, Township 27, South, Range 1 West of the 6th P.M. Sedgwick County, Kansas described as Beginning at the N.E. corner of Lot 1, Block A, Kansas State Bank Addition, Wichita Sedgwick County, Kansas being a common corner of the S.E. corner of Lot 8, Verda Vista Sedgwick County, Kansas; thence N88°20'30"E along the common line as extended East, 200 feet; thence S01°18'15"E, 275 feet; thence N88°20'30"E, 399.5 feet; thence N01°18'15"W, 275 feet; thence N88°20'30"E, 205.96 feet; thence S14°10'35"E, 401.95 feet to a point 40 feet North of the North line of U.S. 54 Highway as deeded on Film 2144, Page 1847; thence N74°04'48"E parallel with and 40 feet North of said U.S. 54 Highway, 258.59 to a point on the West line of Miles Lakewood Village Second Addition, Wichita Sedgwick County, Kansas; thence S01°28'11"E along the West line of said Miles Lakewood Village Second Addition, and Davis Moore 12th Addition, Wichita Sedgwick County, Kansas, 41.31 feet to a point on the North line of said U.S. 54 Highway; thence S74°04'48"W along said U.S. 54 Highway, 419.31 feet; thence S15°55'12"E, 125 feet; thence S71°17'23"W, 324.5 feet; thence S76°05'36"W, 210.7 feet; thence S83°50'05"W, 19.89 feet to the S.E. corner Lot 1, Block A, Quiktrip 10th Addition, Wichita, Sedgwick County, Kansas; thence N01°19'41"W, 236.41 feet to the N.E. corner of said Quiktrip 10th Addition; thence S88°12'33"W along the North line of said Quiktrip 10th and the North line of Lot 1, Block A, Quiktrip 8th Addition, Wichita, Sedgwick County, Kansas, 236 feet to a bend point in the East line of said Quiktrip 8th Addition; thence N01°18'15"W along the East line of said Quiktrip 8th Addition and said Kansas State Bank Addition, 500 feet to the point of beginning.

TRACT B

That part of the SW1/4 Section 29, Township 27, South, Range 1 West of the 6th P.M. Sedgwick County, Kansas described as Commencing at the N.E. corner of Lot 1, Block A, Kansas State Bank Addition, Wichita Sedgwick County, Kansas being a common corner of the S.E. corner of Lot 8, Verda Vista Sedgwick County, Kansas; thence N88°20'30"E along the common line as extended East, 200 feet to the Point of Beginning thence continuing N88°20'30"E, 399.5 feet; thence S01°18'15"E, 275 feet; thence S88°20'30"W, 399.5 feet; thence N01°18'15"W, 275 feet to the point of beginning; ALONG WITH,

That part of the SW1/4 Section 29, Township 27, South, Range 1 West of the 6th P.M. Sedgwick County, Kansas and Lot 5, Verda Vista, Sedgwick County, Kansas all being described as Beginning at the N.E. corner of Lot 1, Block A, Kansas State Bank Addition, Wichita Sedgwick County, Kansas being a common corner of the S.E. corner of Lot 8, Verda Vista Sedgwick County, Kansas; thence N88°20'30"E along the common line as extended East, 659.8 feet to a point on the West line of a Ponding and Overland Flowage Easement filed on DOC#/FLM-PG: 28652650; thence N12°55'02"W along said Easement, 59.72 feet; thence continuing along said Easement N36°46'09"W, 96.11 feet; thence N51°17'57"W, 146.12 feet; thence N35°39'24"W, 95.48 feet; thence N16°26'04"W, 101.68 feet; thence N11°19'07"W, 120.39 feet along the West line of a Ponding and Overland Flowage Easement filed on DOC#/FLM-PG: 28652650, and DOC#/FLM-PG: 28652651; thence continuing N22°33'08"W, along said DOC#/FLM-PG: 28652651, 179.57 feet; thence N16°20'54"W, 124.1 feet; thence N25°52'23"E, 38.55 feet more or less to a point on the South line of the North 40 acres of said SW1/4 of said Section 29; thence S88°20'41"W along the South line of the North 40 acres of said SW1/4, 299.04 feet to a point 270 feet East of the West line of said SW1/4, said point being 30 feet North of the N.E. corner of Lot 1, Verda Vista Sedgwick County, Kansas; thence S01°18'15"E along the East line of said Verda Vista, 450 feet to the N.E. corner of Lot 5, in said Verda Vista; thence S88°20'41"W, 220 feet to the N.W. corner of said Lot 5; thence S01°18'15"E, 100 feet to the S.W. corner of said Lot 5; thence N88°20'41"E, 220 feet to the S.E. corner of said Lot 5; thence S01°18'15"E, 300 feet to the point of beginning.



**INDEX**

TITLE SHEET	1
GENERAL NOTES	2
MASS GRADING PLANS	3-5
SWS PLANS	6-14
EROSION CONTROL	15-18
RETAINING WALL	19-22
SURVEY	23-24
PLAT	25

Contacts:

Civil:  
Tim Austin, P.E.  
Poe & Associates, Inc.  
5940 E. Central, Ste 200  
Wichita, Kansas 67208  
316-685-4114

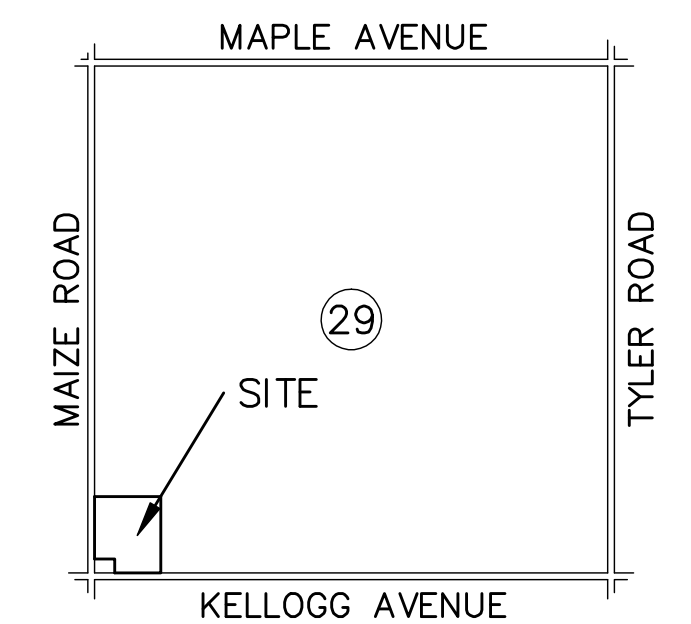
Bryce Barkus, P.E.  
Ameritrack West, Inc.  
12469 SW 15th  
Benton, Ks. 67017  
316-778-2215

Surveyor:  
Mark Savoy, L.S.  
Savoy Company, P.A.  
433 S. Hydraulic  
Wichita, KS 67211  
316-265-0005

Geotechnical:  
Dan Thiele, P.E.  
Thiele Geotech, Inc.  
13478 Chandler Road  
Omaha, Nebraska  
402-556-2171

Michael Ehss, P.E.  
Terracon, Inc.  
1815 S. Eisenhower  
Wichita, KS 67209  
316-262-0171

Architect:  
Randy Phillips, AIA  
David Wells, ASLA  
Spagenberg Phillips, P.A.  
121 N Mead  
Wichita, KS 67202  
316-267-4002



LOCATION MAP  
No Scale

**JULY 2009**



**POE & ASSOCIATES, INC.**  
CONSULTING ENGINEERS  
5940 E. Central, Suite 200 - Wichita, KS 67208-4242  
Phone 316/685-4114 - FAX 316/685-4444

