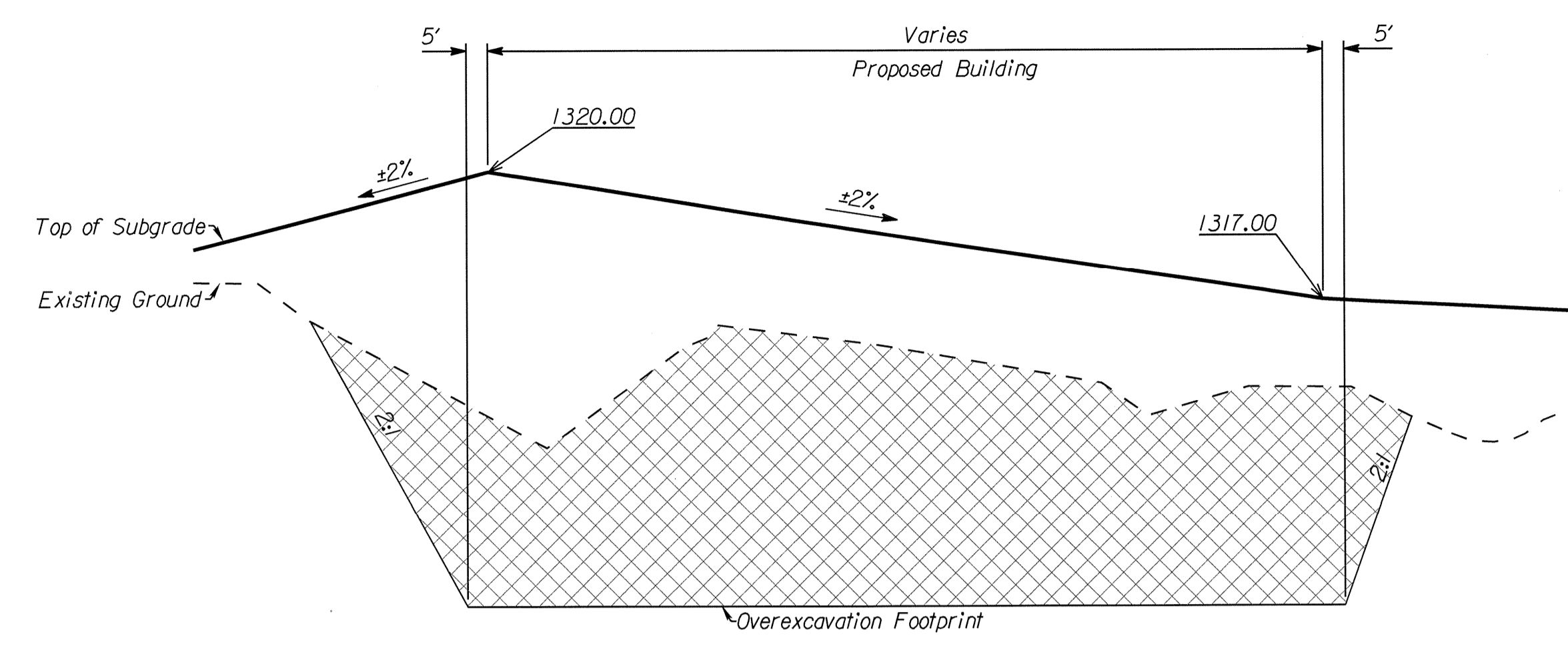
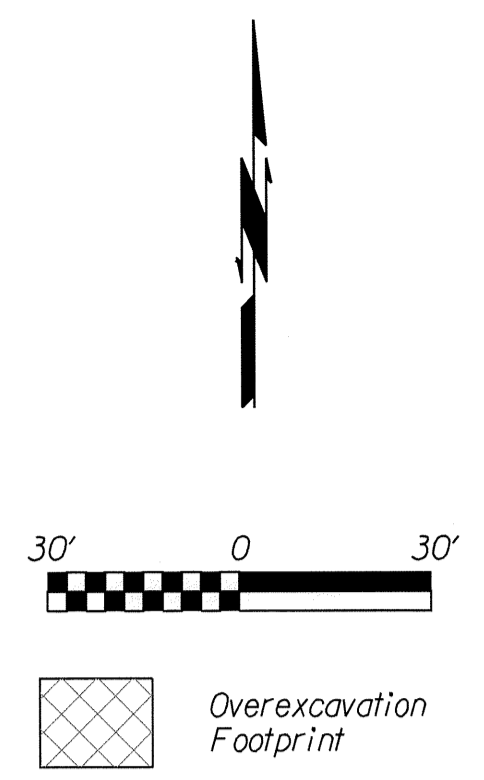
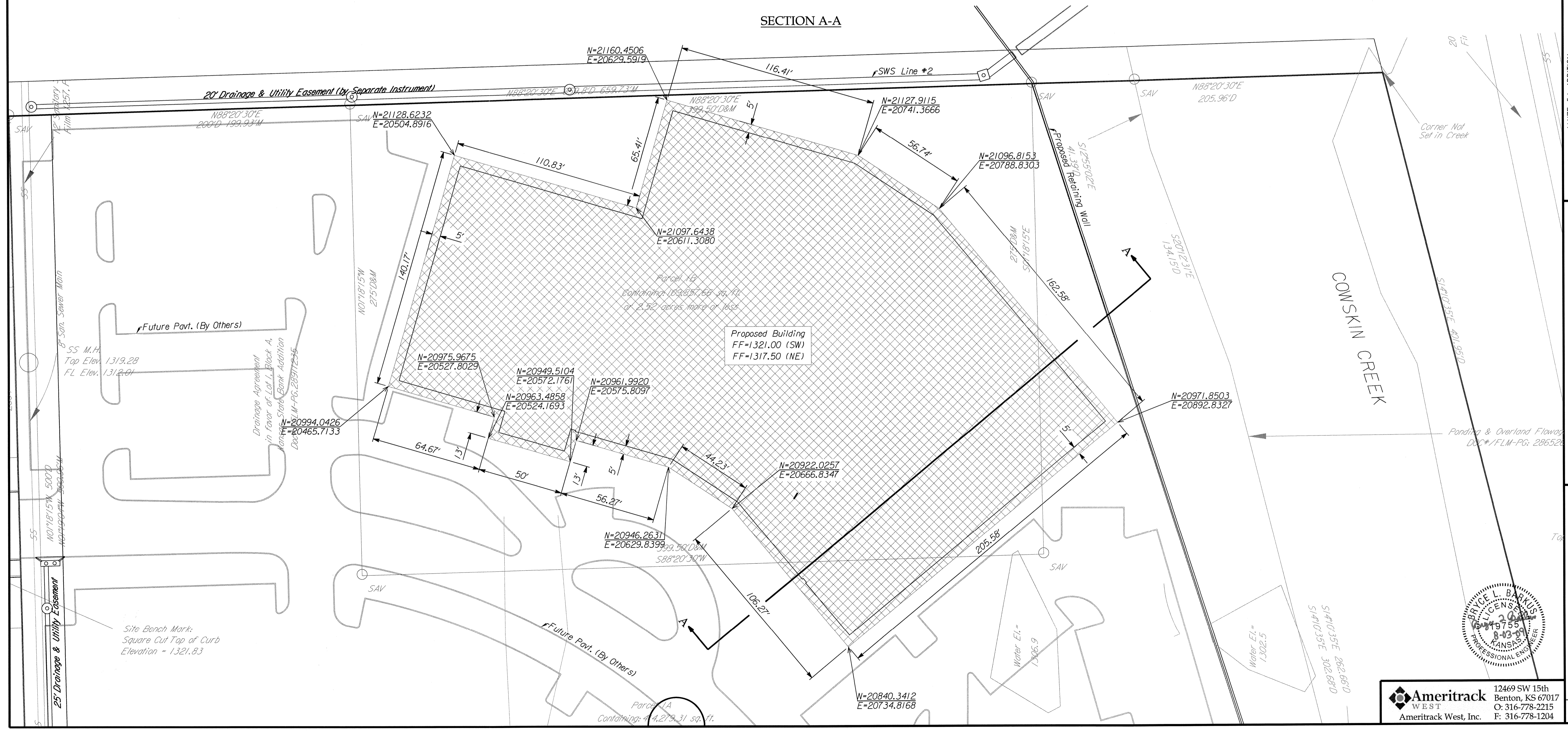


Note:
Refer to Terracon Geotechnical Report
for overexcavation depths and compaction
requirements.

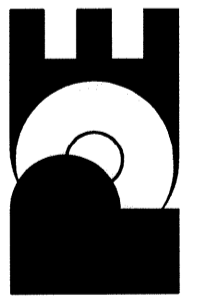


SECTION A-A



MAIZE 54 ADDITION
DRAINAGE IMPROVEMENTS
OVEREXCAVATION
CITY OF WICHITA, KANSAS
JAMES L. AMOUR, P.E. - CITY ENGINEER
Project No. 485-84575 OCA No. 751463

POE & ASSOCIATES OF KANSAS, INC.
CONSULTING ENGINEERS
5940 E. Central, Suite 200 • Wichita, KS 67208-4242
Phone 316/685-4114 • FAX 316/685-4444



FINAL
Designed By: BLB
Drawn By: WAN
Drawing: 360x-003-Overexcavation.dgn
Date: August 3, 2009
Sheet 3 of 25

Ameritrack
WEST
Ameritrack West, Inc. 12469 SW 15th
Benton, KS 67017
O: 316-778-2215
F: 316-778-1204