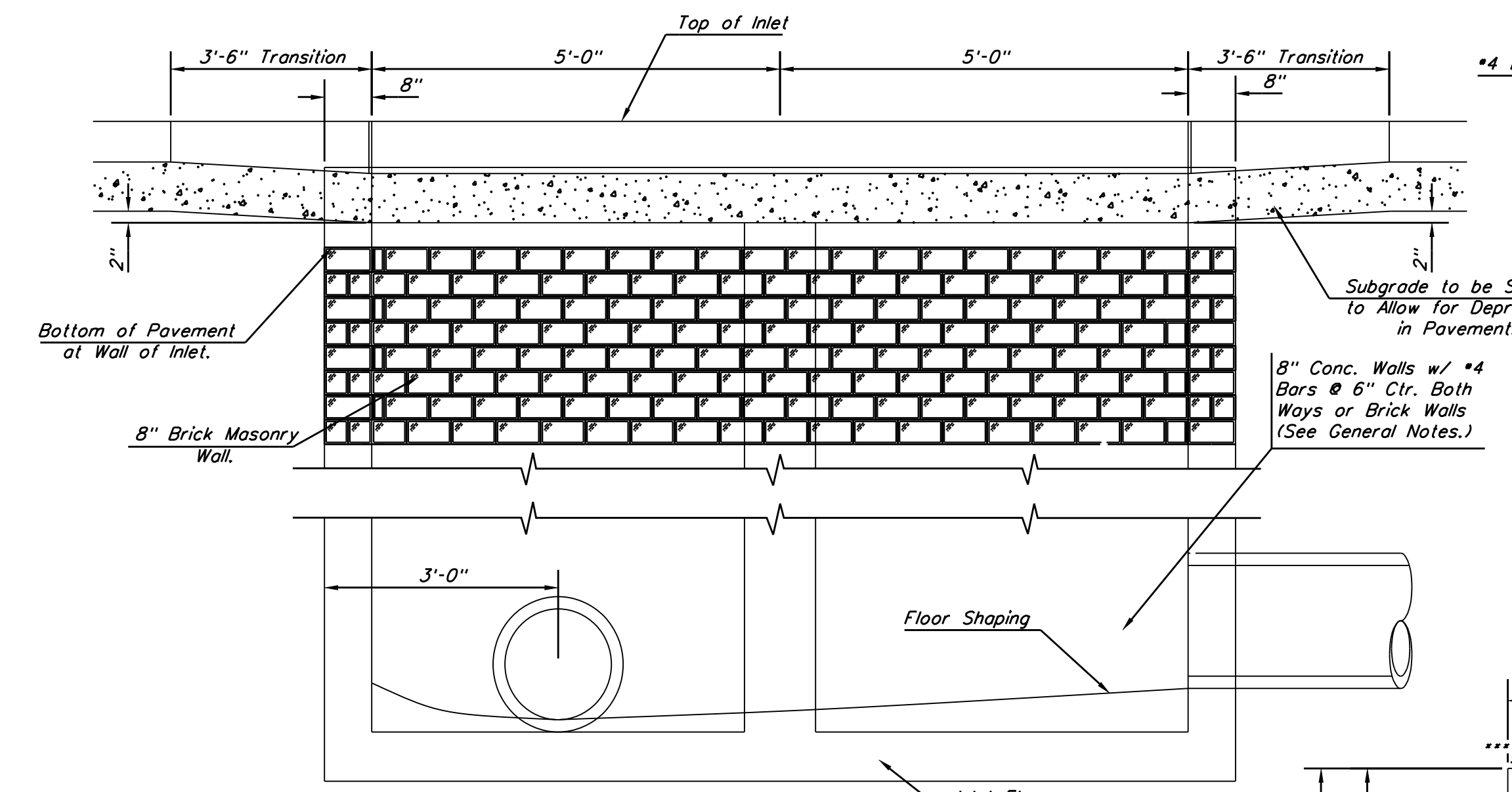
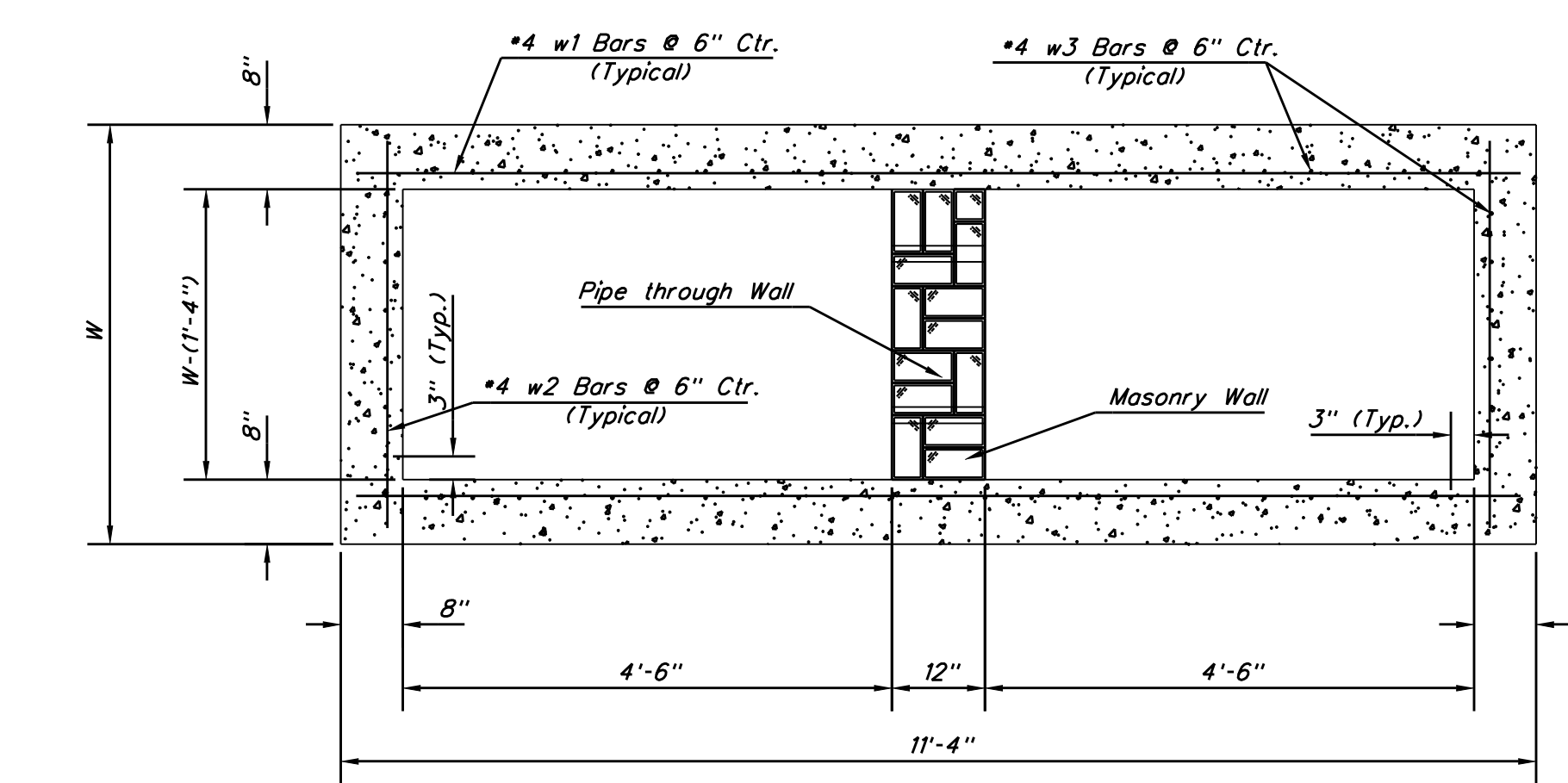


**PLAN**

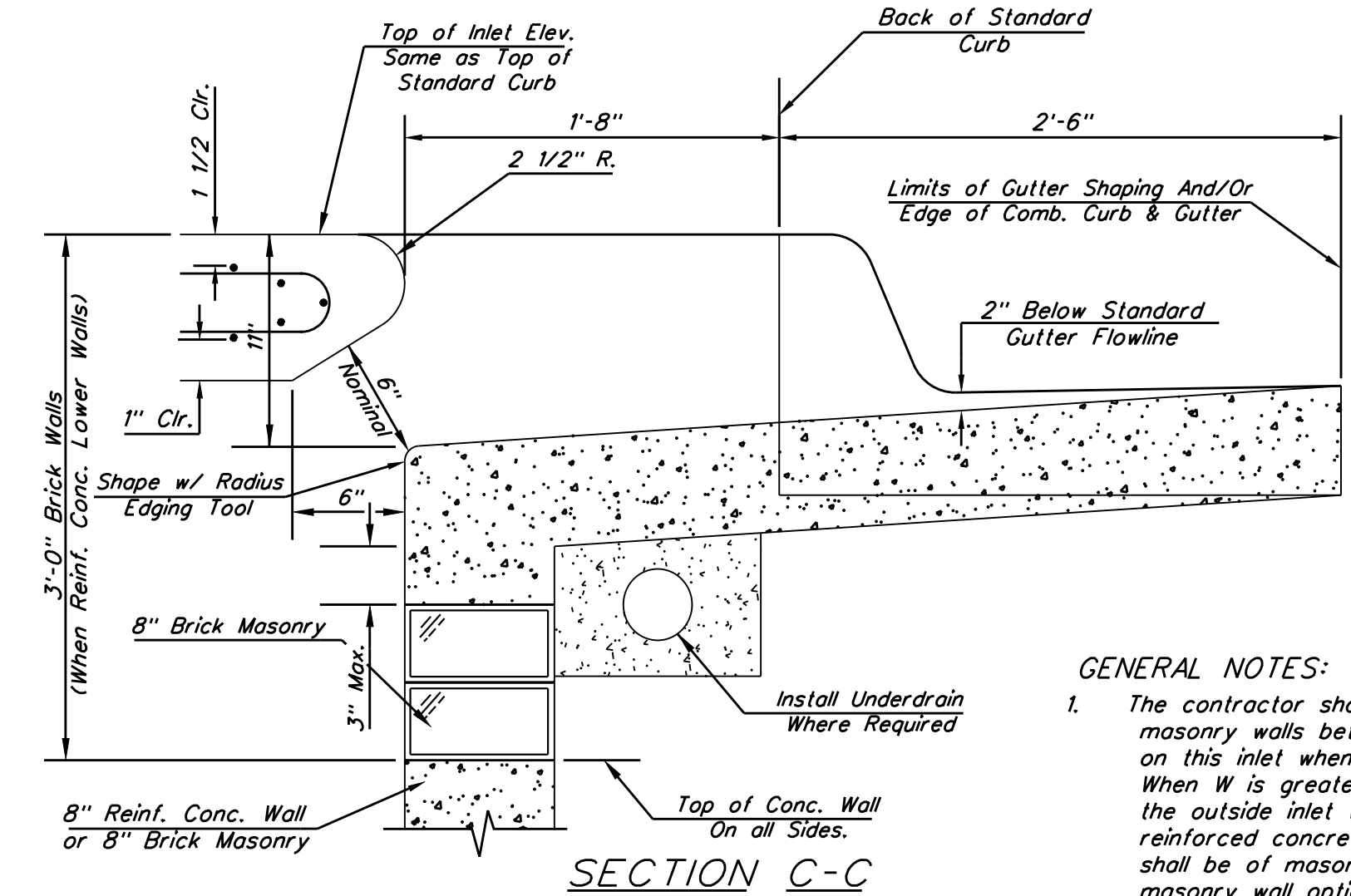
\*Left Side Shown Without Slab Reinforcing, Right Side Shown With Slab Reinforcing



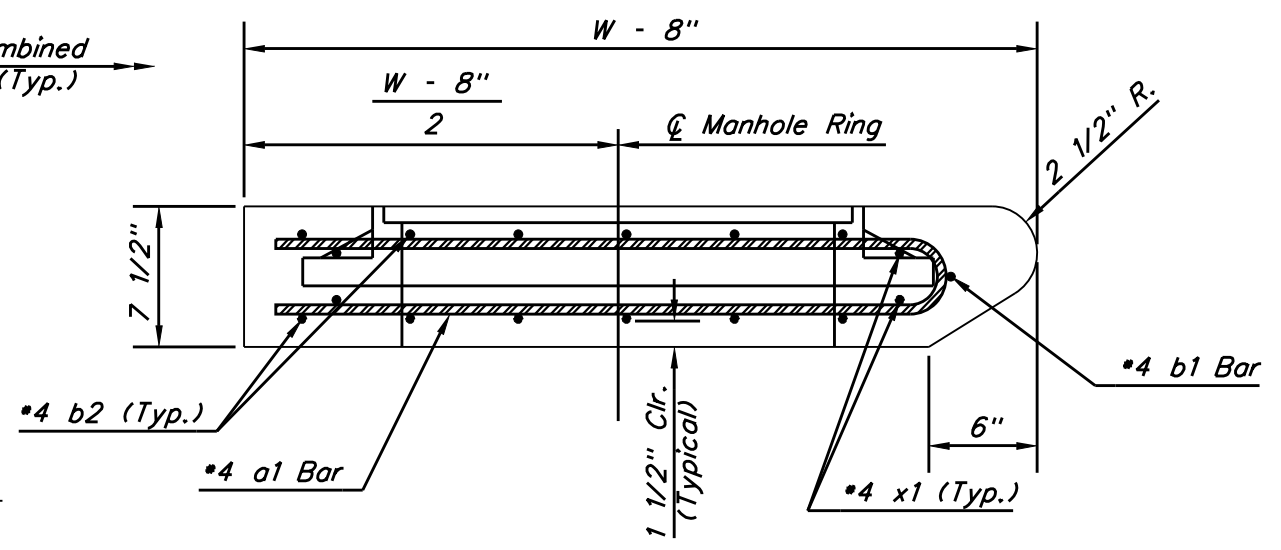
**ELEVATION**



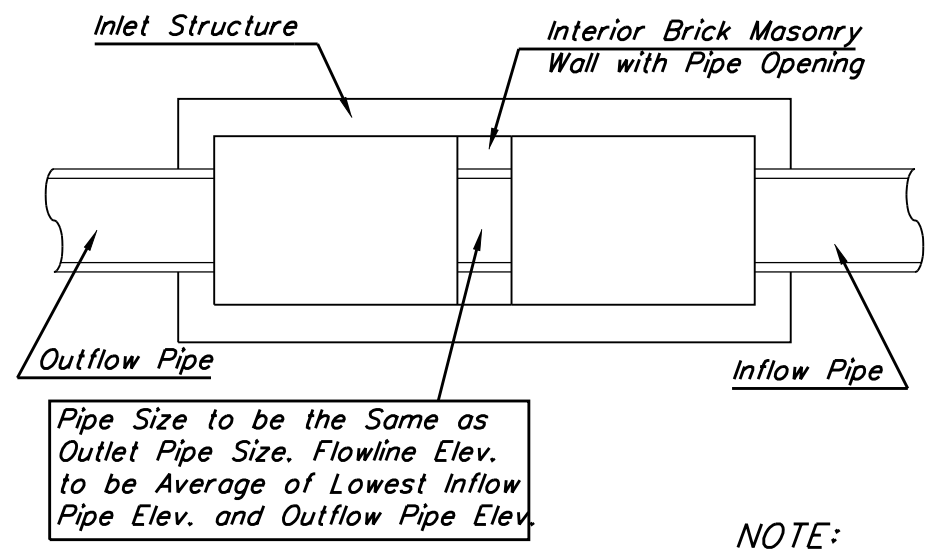
**SECTION B-B**



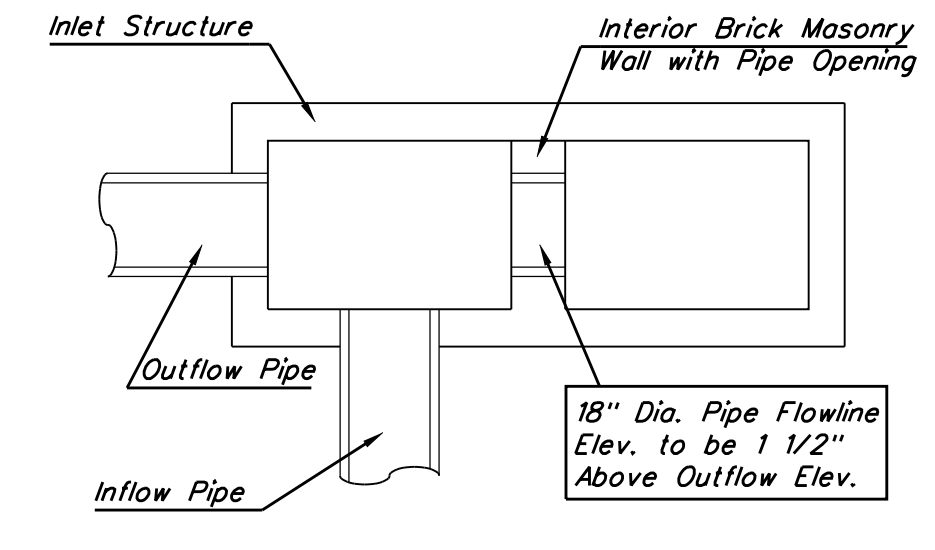
**SECTION C-C**



**SECTION A-A**

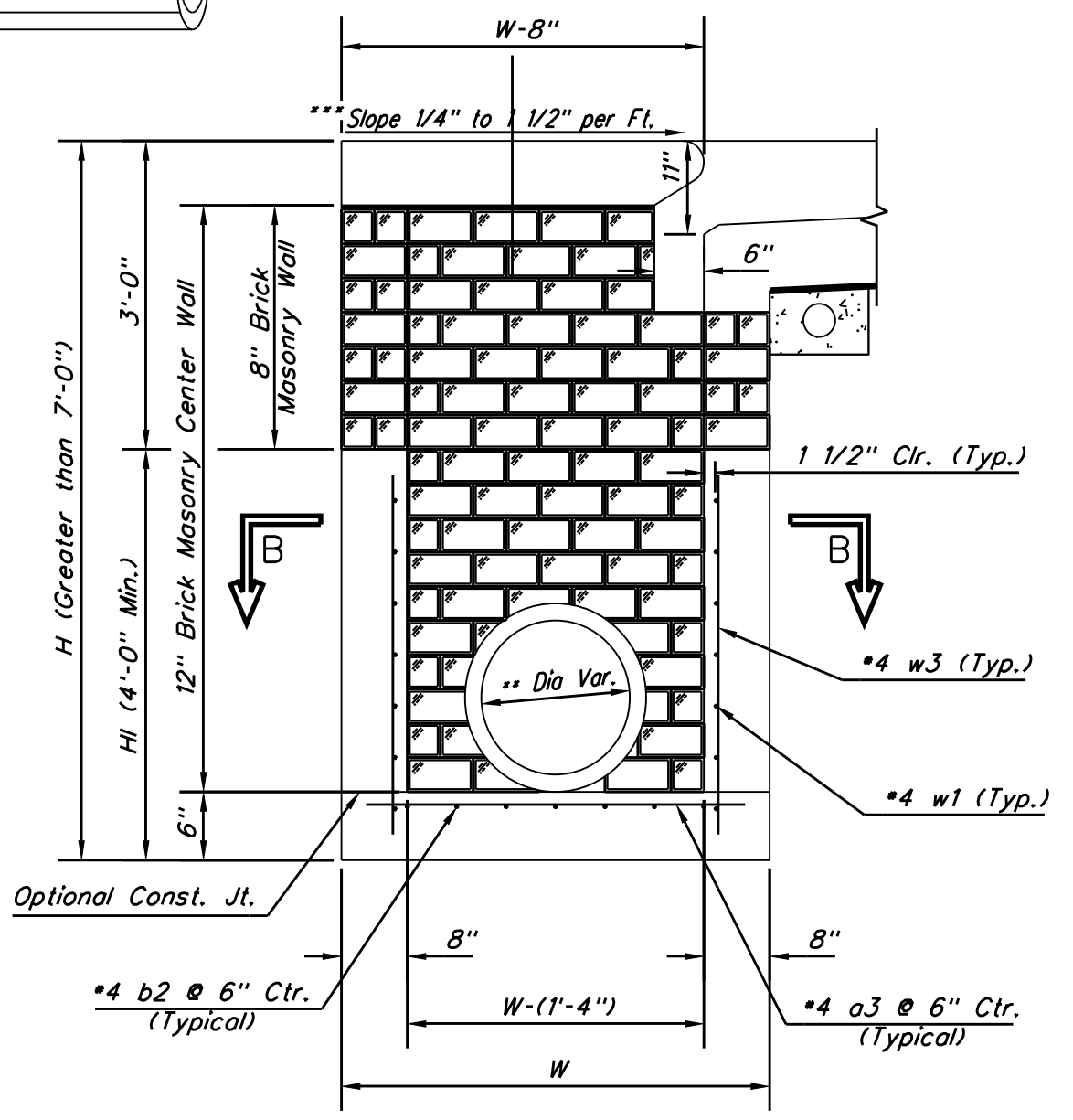


**CASE I**

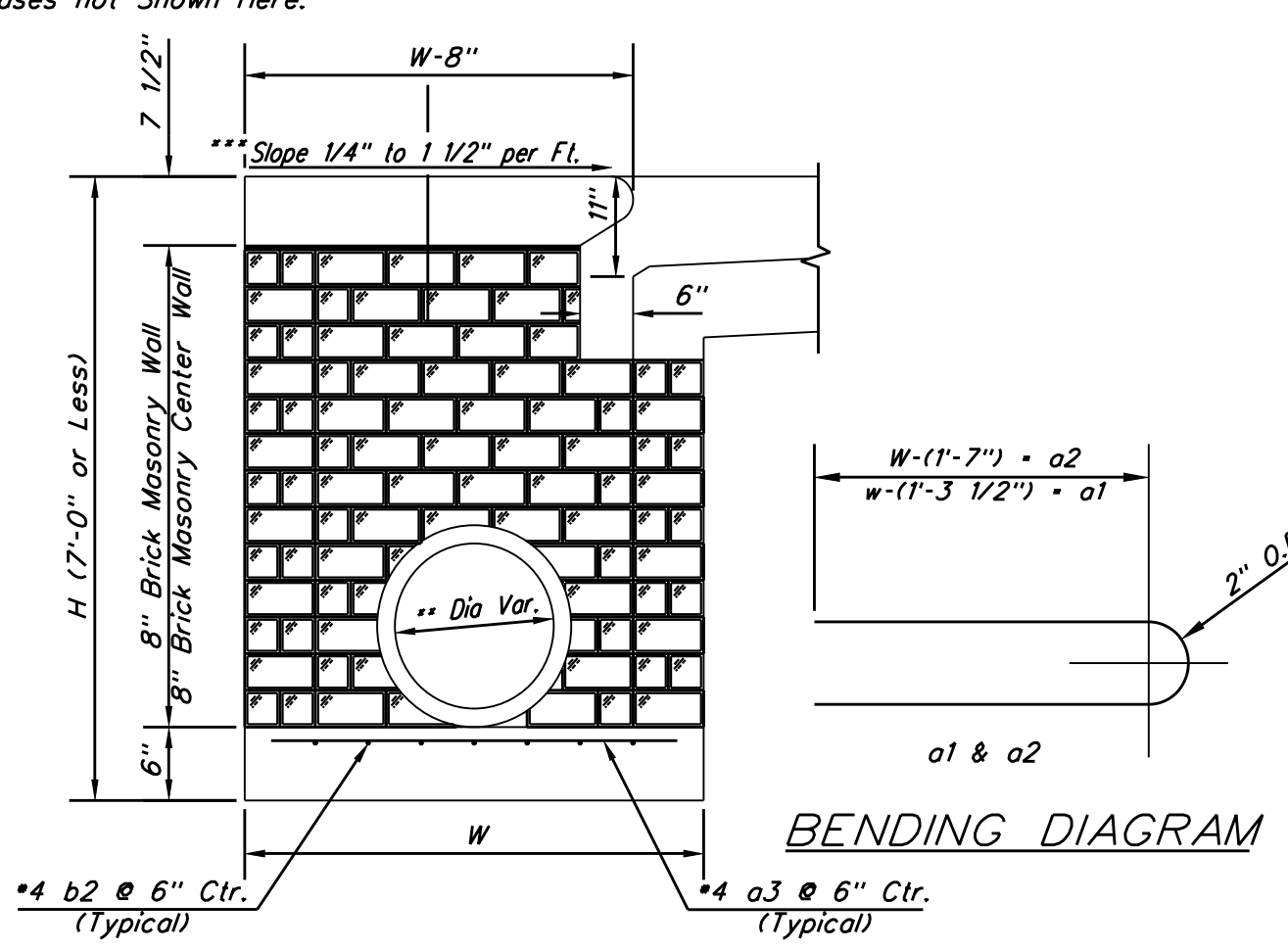


**CASE II**

**NOTE:**  
Center Wall Pipe Size shall be as Specified in Inlet Construction Notes on the Plan/Profile Sheets for those Cases not Shown Here.



**TYPICAL INLET SECTION AT CENTER WALL\*\***  
(Reinforced Concrete Walls)



**BENDING DIAGRAM**

**TYPICAL INLET SECTION AT CENTER WALL**  
(Masonry Walls)

**NOTES:**  
\*\* A center wall opening shall be provided by means of a section of reinforced concrete pipe. See Case I and Case II above.  
Slope of inlet tops to match sidewalk or parking slopes within limits indicated

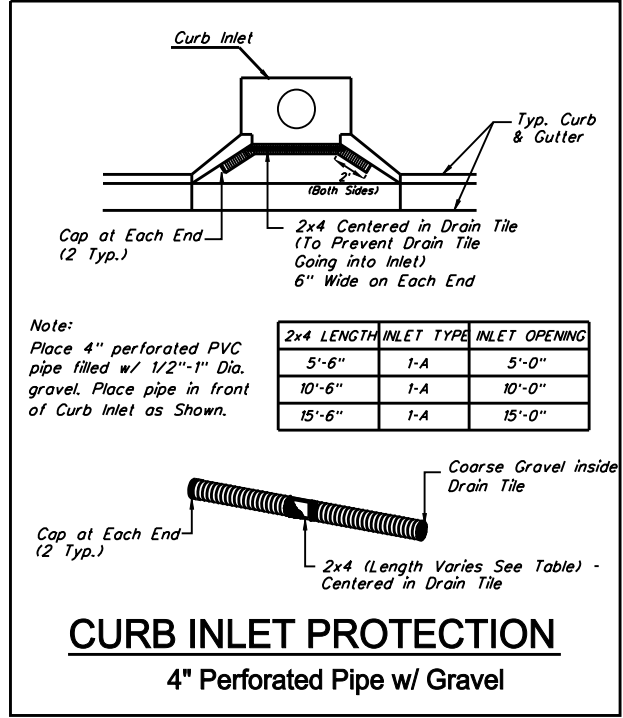
**PRECAST SLAB AND FLOOR REINFORCING**

| MARK | SIZE | W • 3'-0" |        | W • 4'-0" |        | W • 5'-0" |        | W • 6'-0" |        | W • 7'-0" |        |
|------|------|-----------|--------|-----------|--------|-----------|--------|-----------|--------|-----------|--------|
|      |      | NO.       | LENGTH | NO.       | LENGTH | NO.       | LENGTH | NO.       | LENGTH | NO.       | LENGTH |
| a1   | #4   | 13        | 6'-7"  | 13        | 8'-7"  | 13        | 10'-7" | 13        | 12'-7" | 13        | 14'-7" |
| a2   | #4   | 4         | 6'-0"  | 4         | 8'-0"  | 4         | 10'-0" | 4         | 12'-0" | 4         | 14'-0" |
| a3   | #4   | 23        | 4'-1"  | 23        | 5'-1"  | 23        | 6'-1"  | 23        | 7'-1"  | 23        | 8'-1"  |
| b1   | #4   | 1         | 9'-9"  | 1         | 9'-9"  | 1         | 9'-9"  | 1         | 9'-9"  | 1         | 9'-9"  |
| b2   | #4   | 23        | 11'-1" | 29        | 11'-1" | 35        | 11'-1" | 41        | 11'-1" | 47        | 11'-1" |
| x1   | #4   | 16        | 3'-10" | 16        | 4'-6"  | 16        | 4'-6"  | 16        | 4'-10" | 16        | 5'-2"  |

**WALL REINFORCING**

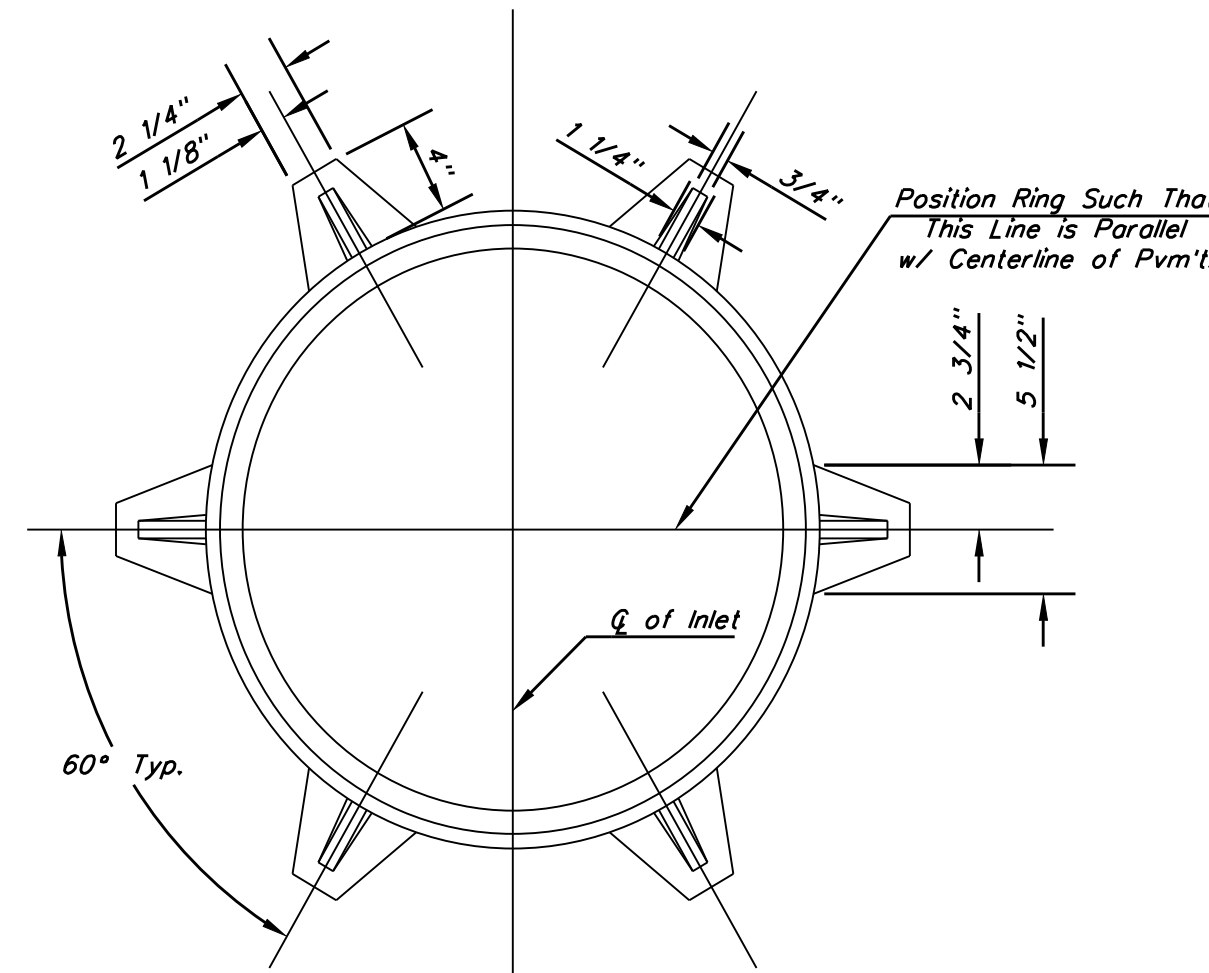
| MARK | SIZE | W • 3'-0" |        | W • 4'-0" |        | W • 5'-0" |        | W • 6'-0" |        | W • 7'-0" |        |
|------|------|-----------|--------|-----------|--------|-----------|--------|-----------|--------|-----------|--------|
|      |      | NO.       | LENGTH | NO.       | LENGTH | NO.       | LENGTH | NO.       | LENGTH | NO.       | LENGTH |
| w1   | #4   | 1         | 11'-1" | 1         | 11'-1" | 1         | 11'-1" | 1         | 11'-1" | 1         | 11'-1" |
| w2   | #4   | 1         | 4'-1"  | 1         | 5'-1"  | 1         | 6'-1"  | 1         | 7'-1"  | 1         | 8'-1"  |
| w3   | #4   | 52        | 2      | 56        | 2      | 60        | 2      | 64        | 2      | 68        | 2      |

\* Field Bend or Cut Reinforcing as Required for Clearance.  
① 4 (H - 12") (H - 21") Rounded down to nearest 0.5"  
② H - 3"



**STANDARD CURB INLET PRECAST TOPS**

| W     | PRE-CAST TOP SIZE   | PIPE SIZE     | CU. YD. CONC. |
|-------|---------------------|---------------|---------------|
| 3'-0" | 3'-8" 11'-4" 7 1/2" | 21" & SMALLER | 0.83±         |
| 4'-0" | 4'-8" 11'-4" 7 1/2" | 24" & 30"     | 1.09±         |
| 5'-0" | 5'-8" 11'-4" 7 1/2" | 36" & 42"     | 1.35±         |
| 6'-0" | 6'-8" 11'-4" 7 1/2" | 48" & 54"     | 1.61±         |
| 7'-0" | 7'-8" 11'-4" 7 1/2" | 60" & 66"     | 1.87±         |



**MANHOLE RING AND COVER**

Weight = 180 lbs.

\*See City of Wichita Standard Manhole Ring and Cover Detail Sheet for Cover Details to Be Used With Inlet Form.



**STANDARD TYPE 1-A CURB INLET**  
10'-0" OPENING

CITY ENGINEER  
JAMES L. ARMOUR, P.E., L.S.  
ACTING

|                             |                      |                  |
|-----------------------------|----------------------|------------------|
| PROJECT NUMBER<br>468-84575 | OCA NUMBER<br>751483 | DATE<br>08/03/09 |
|-----------------------------|----------------------|------------------|

CITY ENGINEER'S OFFICE  
CITY HALL - SEVENTH FLOOR  
455 NORTH MAIN STREET  
WICHITA, KANSAS 67202-1620  
(316) 268-4501  
(316) 268-4114 FAX

MAIZE 54 ADDITION  
DRAINAGE IMPROVEMENTS  
TYPE 1-A CURB INLET (10'-0")  
CITY OF WICHITA, KANSAS  
JAMES L. ARMOUR, P.E. - CITY ENGINEER  
Project No. 468-84575 OCA No. 751483

POE & ASSOCIATES OF KANSAS, INC.  
CONSULTING ENGINEERS  
5940 E. Central, Suite 200 Wichita, KS 67208-4242  
Phone 316/685-4114 FAX 316/685-4444

DESIGNED BY: BLB  
DRAWN BY: WAN  
DRAWING: 360X-010-Inlet 1-A 10' Detail.dgn  
DATE: August 3, 2009

Added Project & OCA Nos.  
08/03/09  
BLB  
BLB  
By Approved  
Date  
No.

10 OF 25