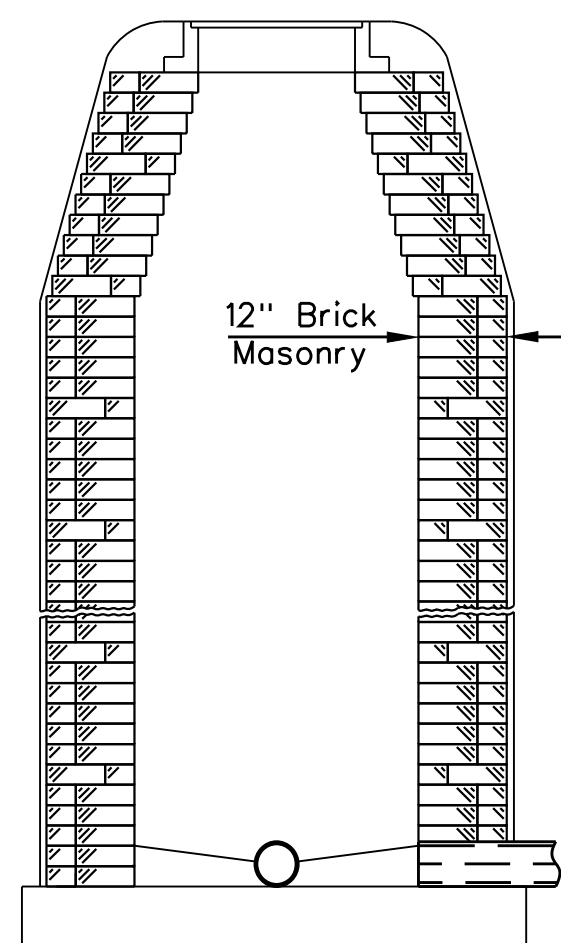
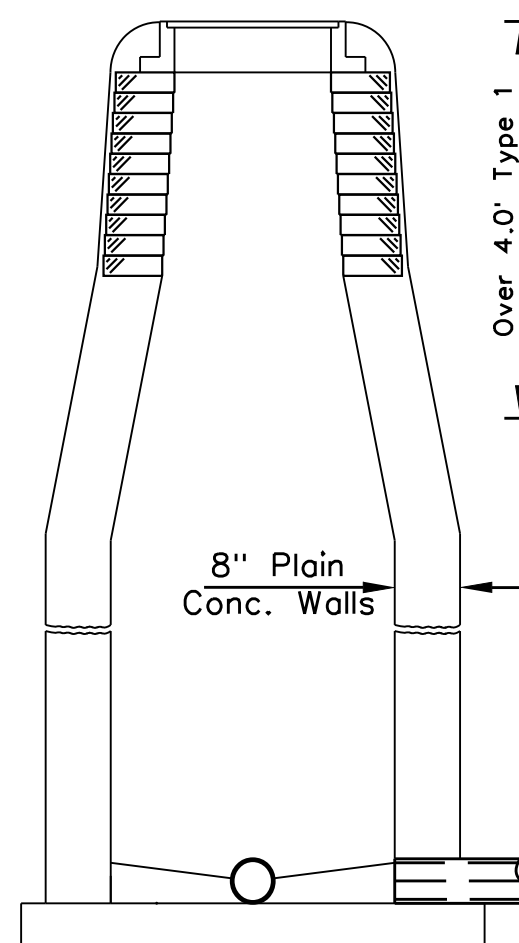


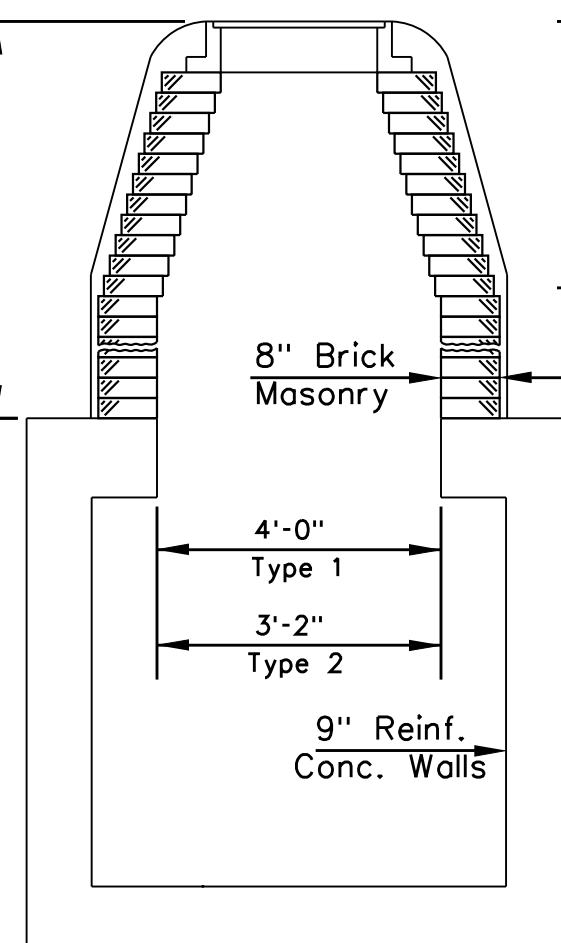
TYPE A
Single Wall Masonry



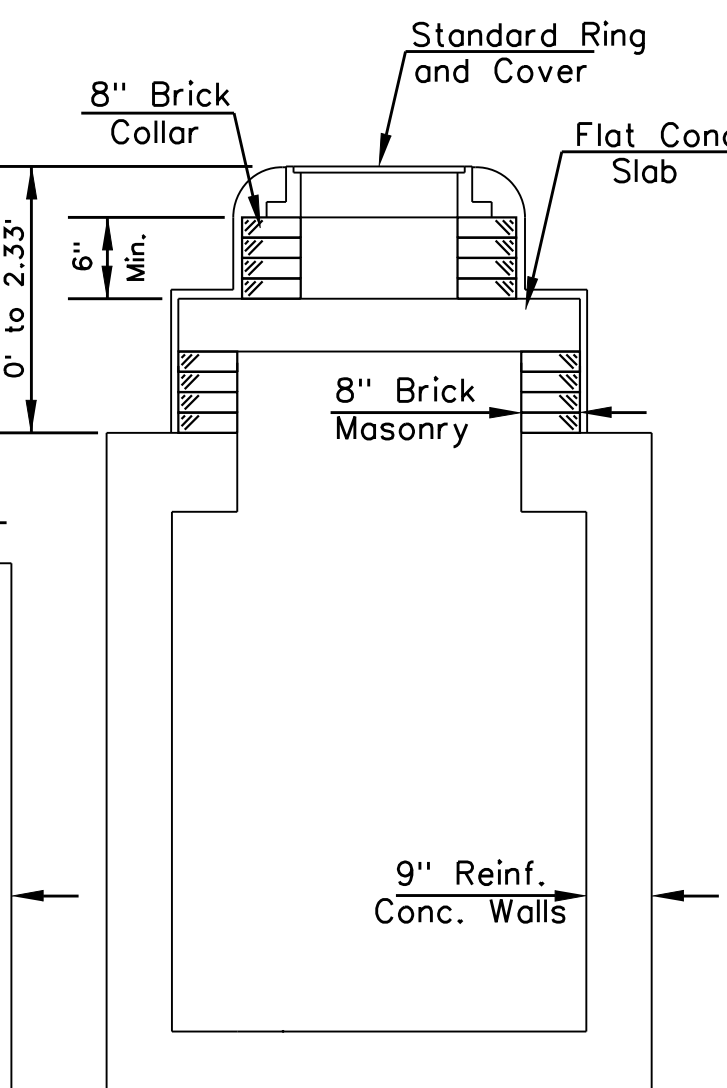
TYPE B
Double Wall Masonry



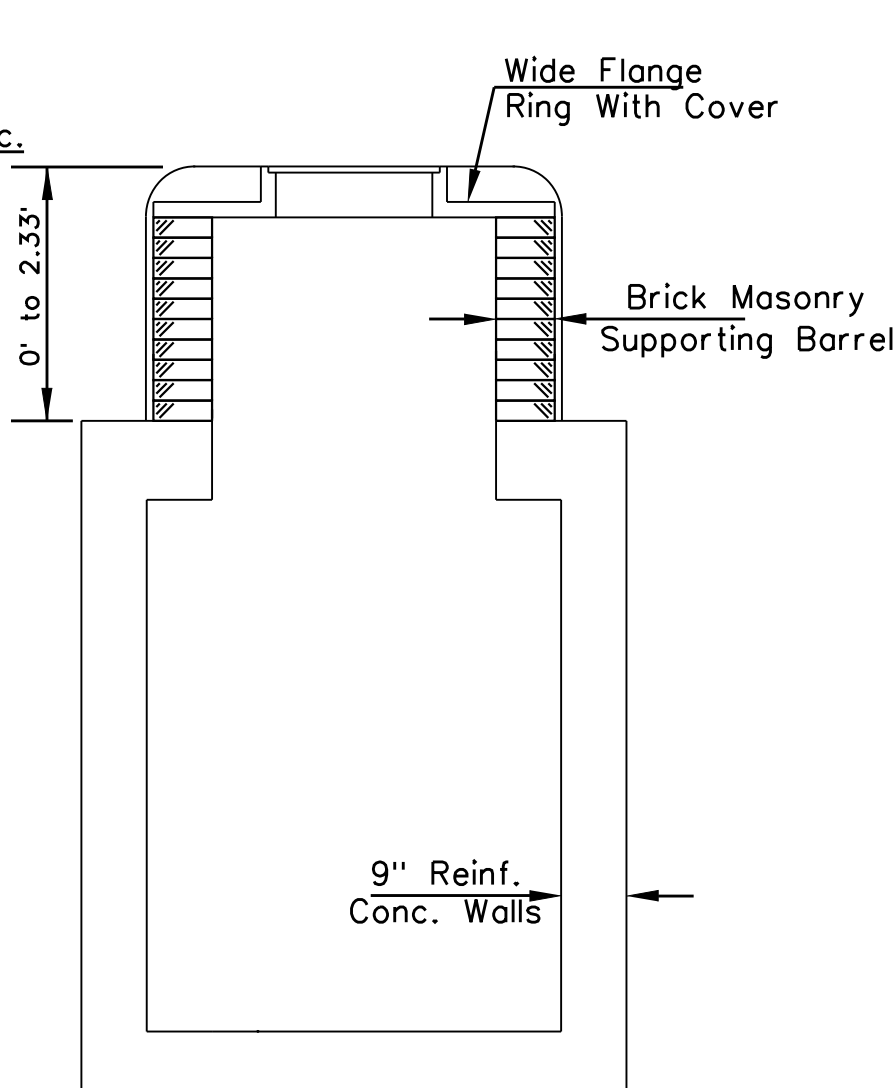
TYPE C & D
Cast in Place
(Type D is plastic lined
& has brick draw)



TYPE 1 & 2
Reinforced Concrete

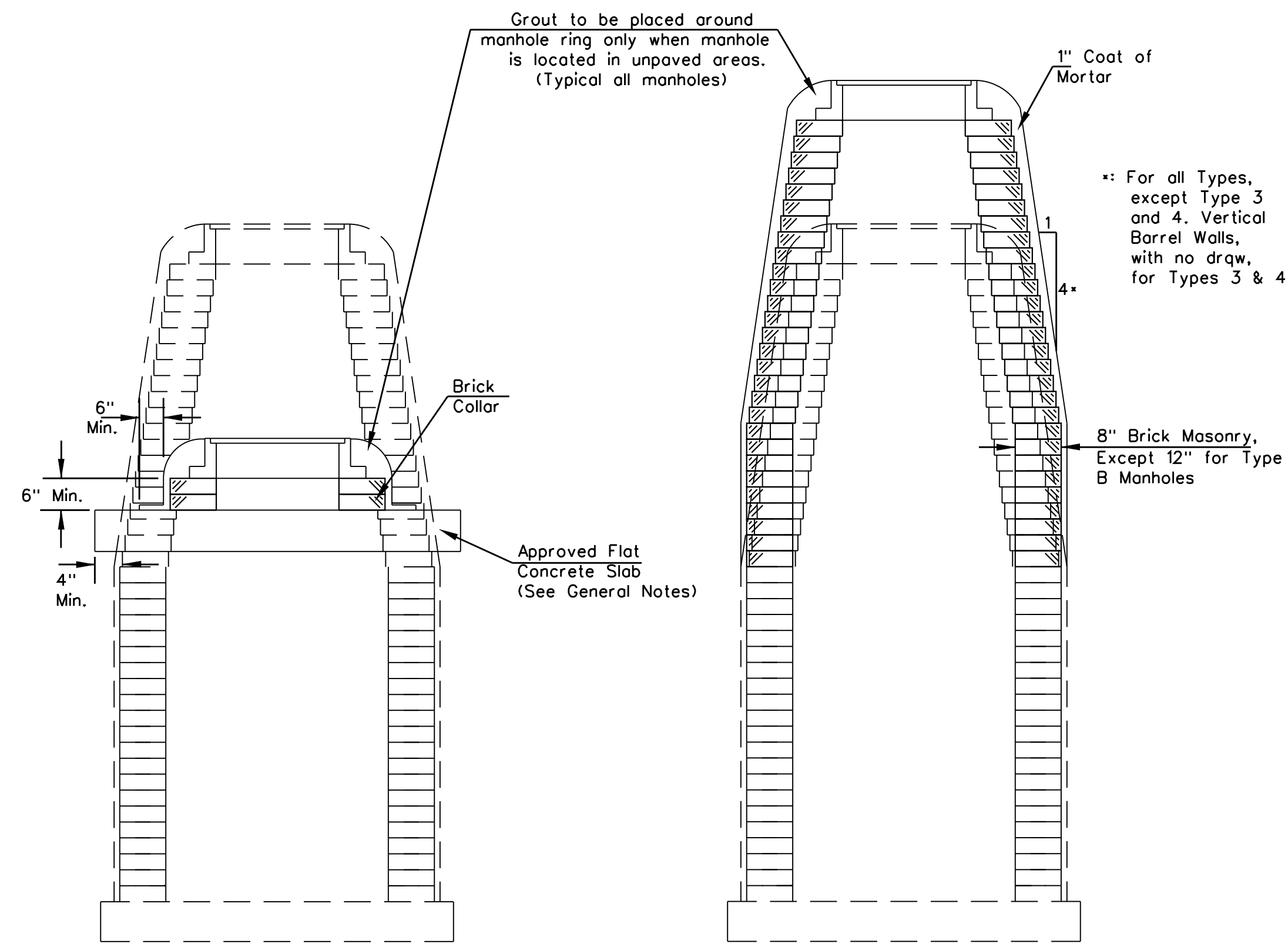


TYPE 3
Reinforced Concrete



TYPE 4
Reinforced Concrete
(Wide Flange Ring)

DEFINITION SKETCHES - CITY OF WICHITA STANDARD MANHOLES



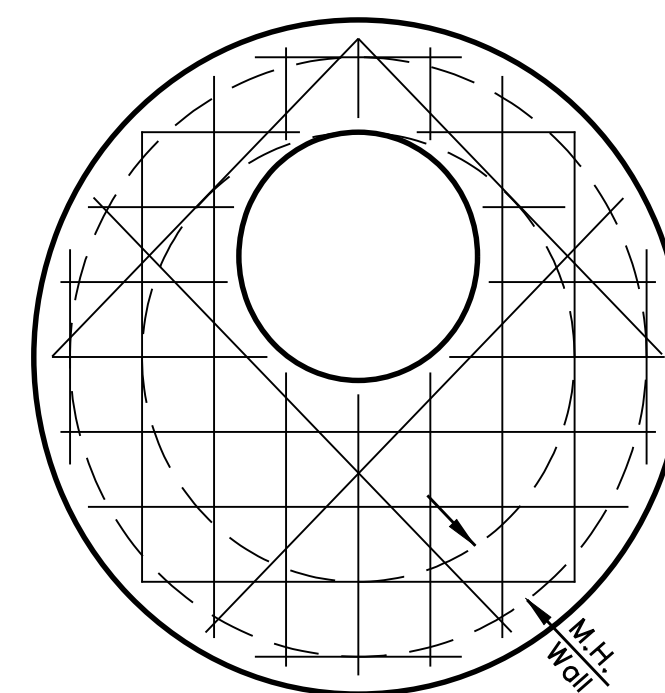
DOWNWARD ADJUSTMENT
(GREATER THAN 12")
All Types

UPWARD ADJUSTMENT
(GREATER THAN 12")
All Types

THE APPROPRIATE PORTIONS OF THE DRAW AND BARREL OF TYPE A, B, C, D, 1 AND 2 MANHOLES SHALL BE REMOVED. A FLAT CONCRETE SLAB SHALL BE PLACED AND THE RING AND COVER RESET. ALL WORK AND MATERIALS SHALL CONFORM TO THE DETAILS SHOWN AND THE GENERAL NOTES.

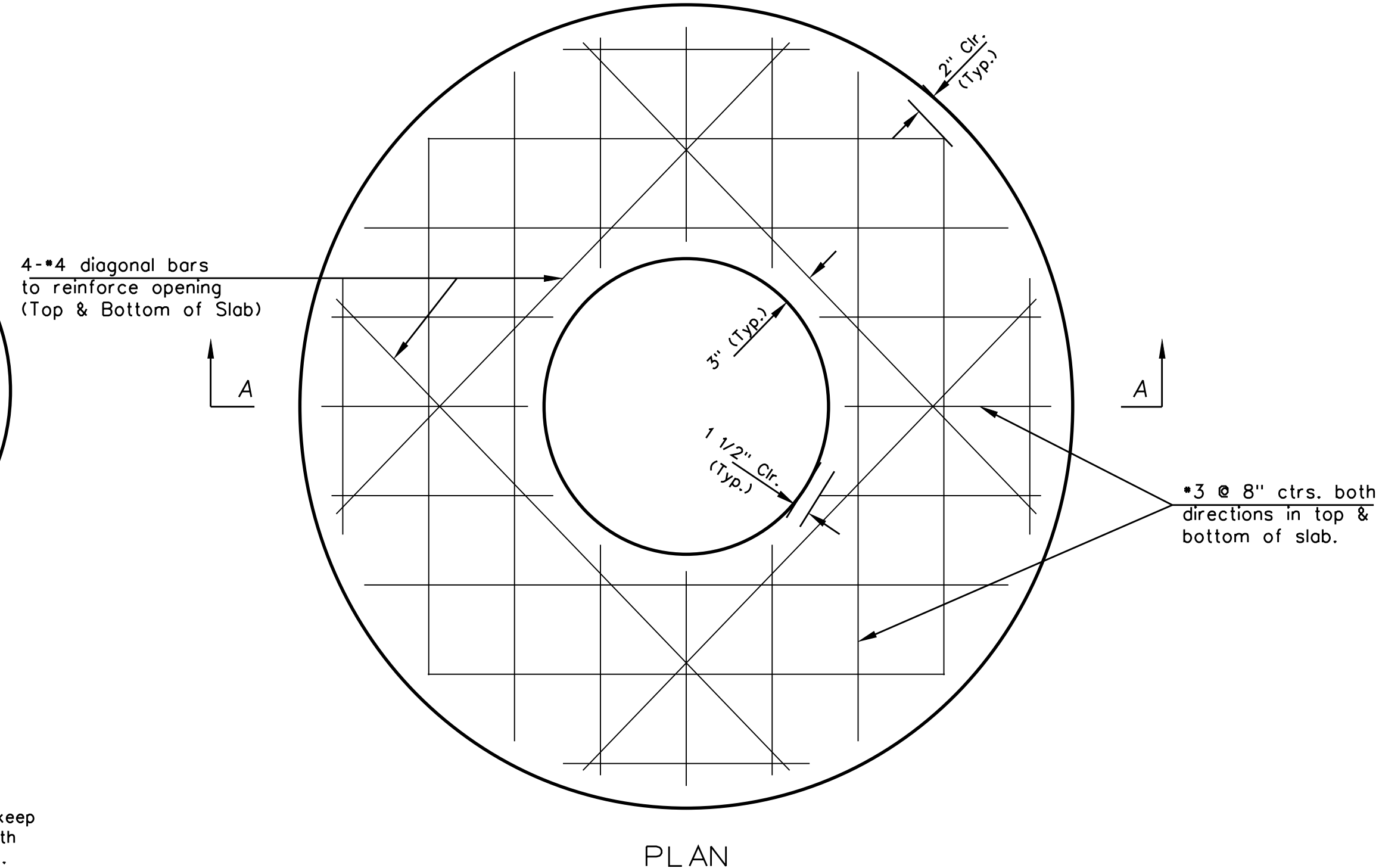
COURSES OF BRICK BARREL SUPPORTING THE WIDE FLANGE RING FOR TYPE 4 MANHOLES AND FLAT CONCRETE SLAB FOR TYPE 3 MANHOLES SHALL BE REMOVED AS NECESSARY PRIOR TO RESETTING THE WIDE FLANGE RING OR FLAT CONCRETE SLAB AND RING. ALL WORK AND MATERIALS SHALL CONFORM TO THE DETAILS SHOWN AND THE GENERAL NOTES.

THE ENTIRE DRAW OF TYPES A, B, C, D, 1 AND 2 MANHOLES SHALL BE REMOVED, THE MANHOLE BARREL RAISED THE APPROPRIATE AMOUNT, A NEW DRAW CONSTRUCTED, AND THE RING AND COVER RESET. THE UPPER PORTION OF TYPE 3 MANHOLES SHALL BE REMOVED TO THE BOTTOM OF THE FLAT CONCRETE SLAB, THE BRICK MASONRY BARREL SUPPORTING THE SLAB SHALL BE RAISED THE APPROPRIATE AMOUNT, AND THE SLAB AND RING AND COVER RESET. THE WIDE FLANGE RING AND COVER OF TYPE 4 MANHOLES SHALL BE REMOVED, THE BRICK MASONRY BARREL SUPPORTING THE RING SHALL BE RAISED THE APPROPRIATE AMOUNT AND THE RING AND COVER RESET. ALL WORK REQUIRED FOR A GREATER THAN TWELVE INCH (12") UPWARD ADJUSTMENT OF ANY MANHOLE SHALL BE ACCOMPLISHED WITH BRICK MASONRY IN ACCORDANCE WITH THE DETAILS SHOWN AND THE GENERAL NOTES.

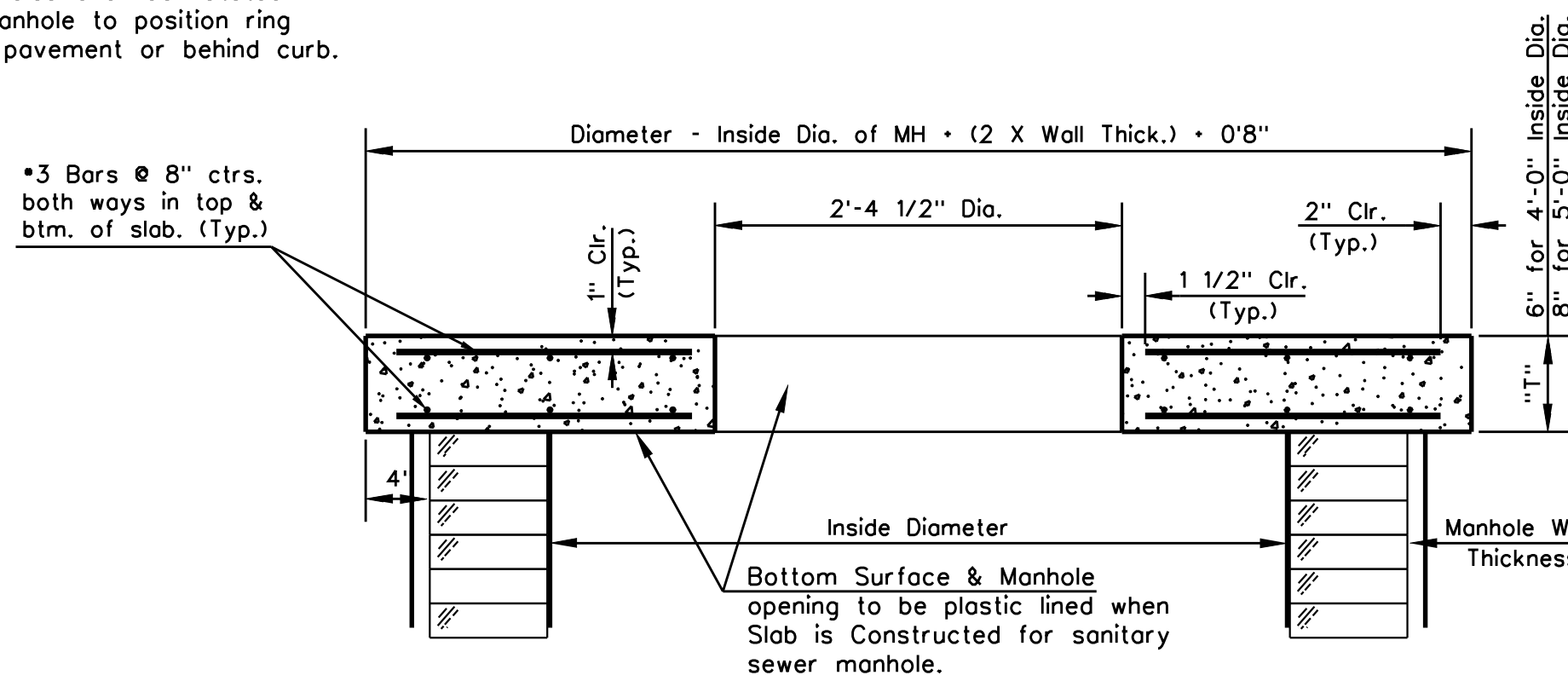


PLAN
ALTERNATE OPENING
LOCATION

* To be used only if necessary to keep ring and cover from conflicting with curb or combined curb and gutter. Flat concrete slab shall be rotated on existing manhole to position ring and cover in pavement or behind curb.



PLAN



SECTION A-A

FLAT CONCRETE SLAB DETAILS REV. 1/05/01, MCG



MANHOLE ADJUSTMENT DETAILS			
CITY ENGINEER			
JAMES L. ARMOUR, P.E., L.S.			
PROJECT NUMBER	OCA NUMBER	DATE	
468-84575	751483	08/03/09	
CITY ENGINEER'S OFFICE		DESIGN	DRAWN
CITY HALL - SEVENTH FLOOR		BLB	JGF
455 NORTH MAIN STREET		SHEET	
WICHITA, KANSAS 67202-1620		13 OF 25	
(316) 268-4500		Sheet	
(316) 268-4114 FAX		13 of 25	

MAIZE 54- ADDITION
 DRAINAGE IMPROVEMENTS
 MANHOLE ADJUSTMENT DETAILS
 CITY OF WICHITA, KANSAS
 JAMES L. ARMOUR, P.E. - CITY ENGINEER
 Project No. 468-84575 OCA No. 751483

By	BLB	Approved
Date	08/03/09	BLB
No.	1	Revision

POE & ASSOCIATES OF KANSAS, INC.
 CONSULTING ENGINEERS
 5940 E. Central, Suite 200 Wichita, KS 67208-4282
 Phone 316/685-4114 FAX 316/685-4444

FINAL
 Designed By: BLB
 Drawn By: JGF
 Drawing: 360X_013_Manhole Adjustment Details.dgn
 Date: August 3, 2009