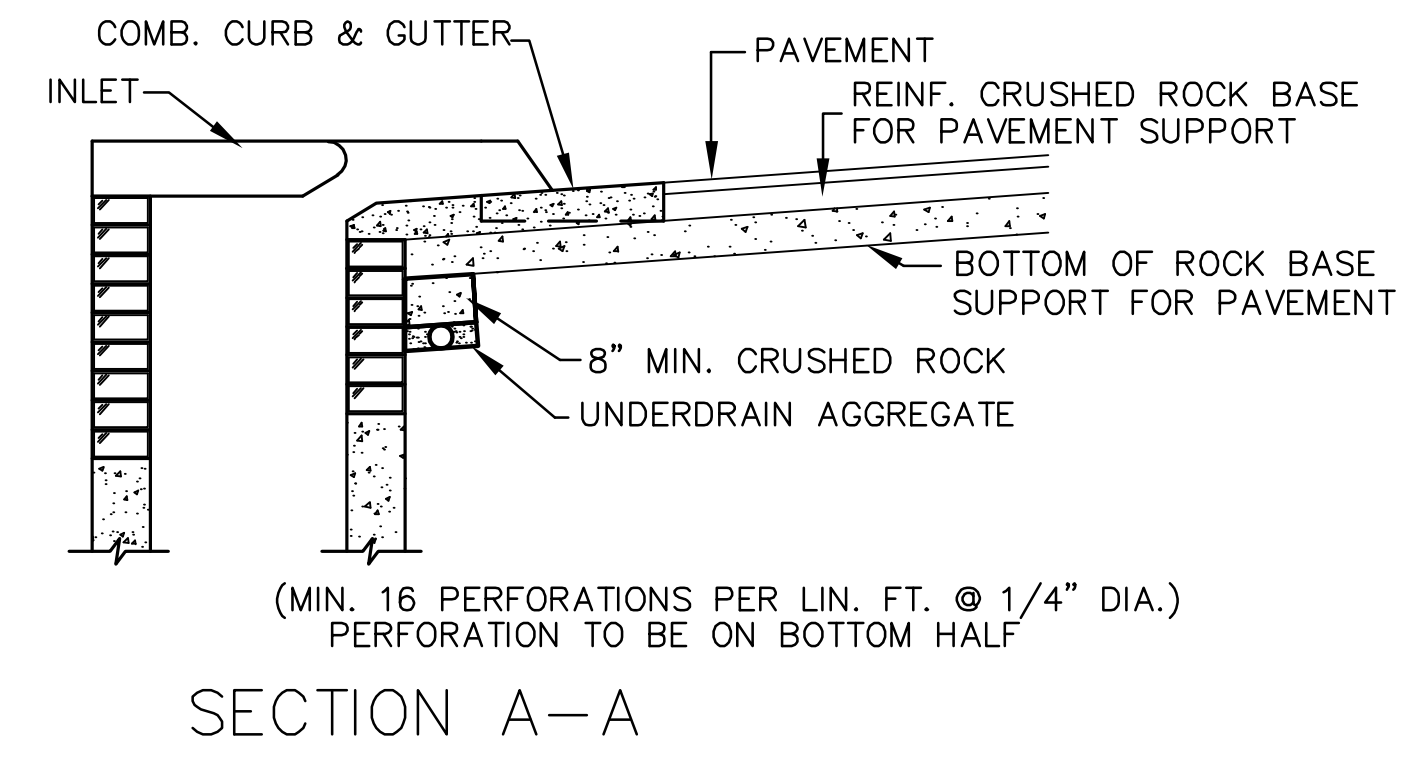
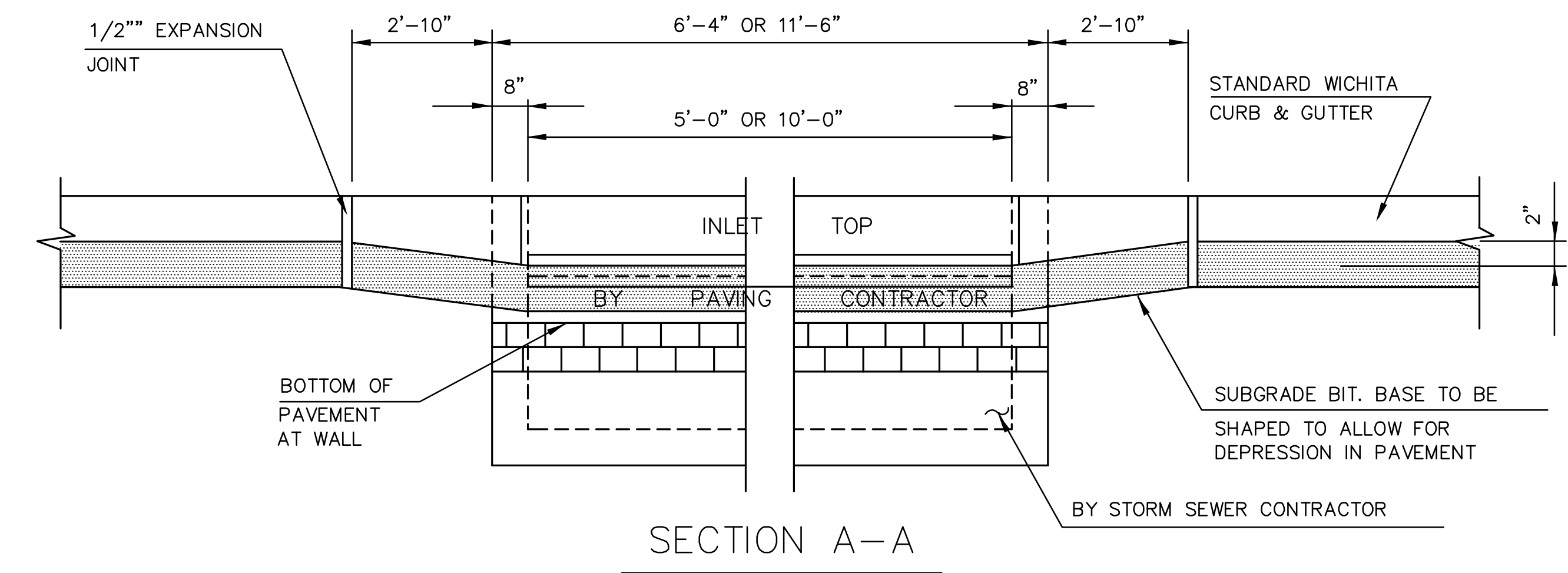
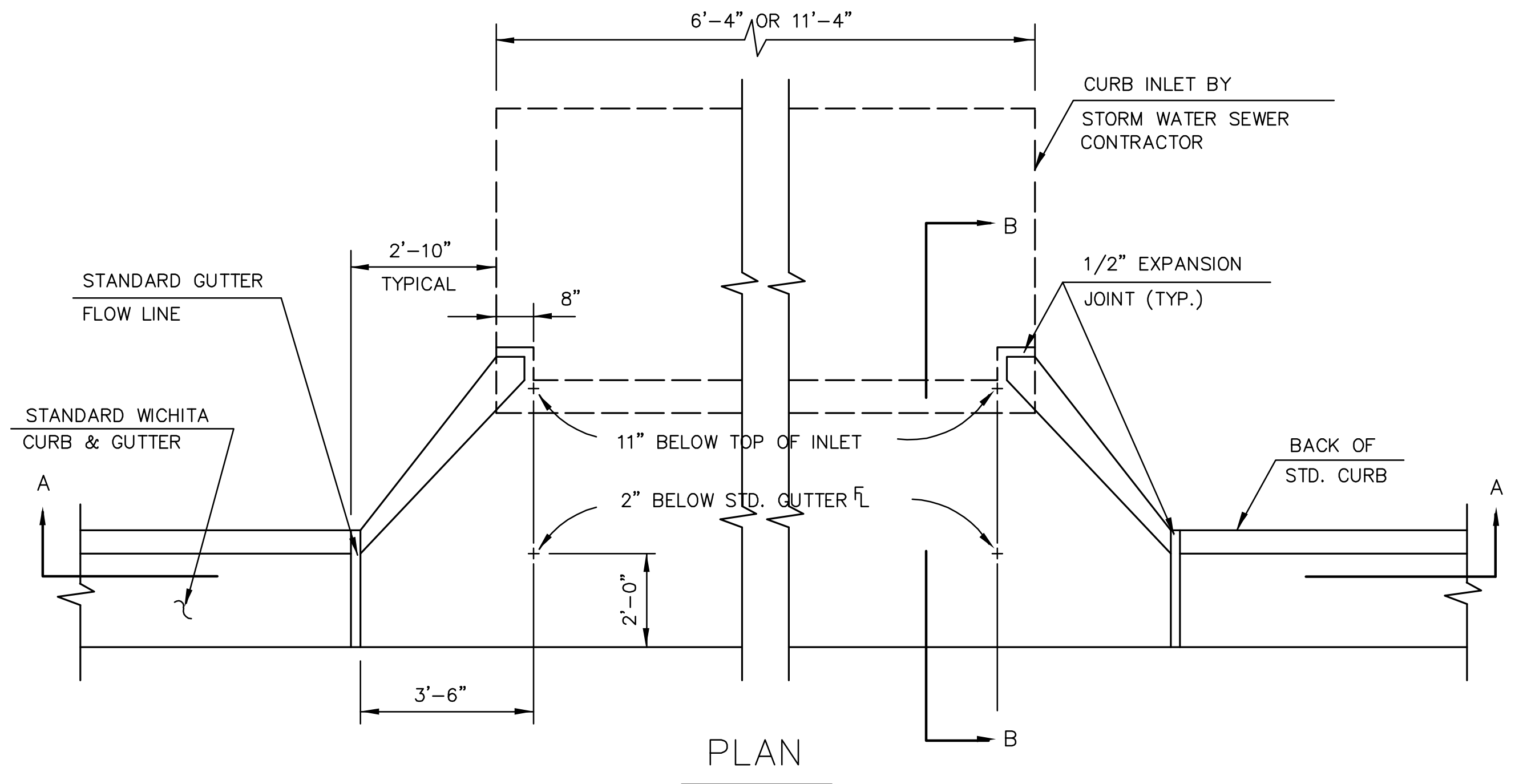


\* UNDERDRAIN AGGREGATE  
PERCENT OF AGGREGATE RETAINED

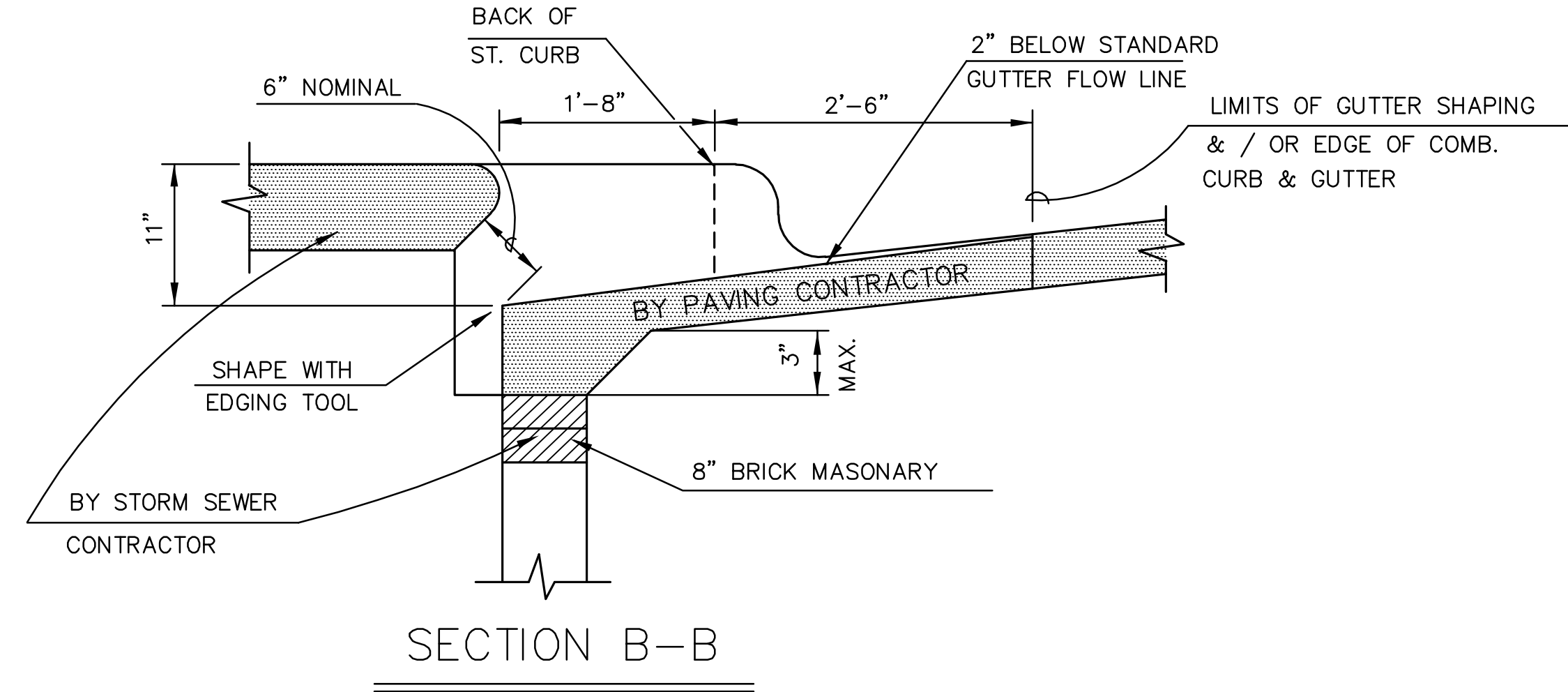
1"	0
3/4"	0 to 10
3/8"	45 to 80
#4	90 to 100
#8	95 to 100

ROCK QUALITY SHALL CONFORM TO THE REQUIREMENTS SPECIFIED BY K.D.O.T. 1990 EDITION STANDARD SPECIFICATION SUBSECTION 1102 FOR DURABILITY CLASS 1.



(MIN. 16 PERFORATIONS PER LIN. FT. @ 1/4" DIA.)  
PERFORATION TO BE ON BOTTOM HALF

NOTE: PLACE 4" PVC PERFORATED PIPE AT ALL DRAINAGE SUMP LOCATIONS.  
COST OF UNDERDRAIN SYSTEM TO BE INCIDENTAL TO THE REINFORCED CRUSHED ROCK SUBGRADE.  
INLET TYPE MAY VARY FROM THAT SHOWN.



**GENERAL NOTES**

1. USE THE CONCRETE MIX SPECIFIED FOR CITY OF WICHITA CONCRETE PAVEMENT. ALL EXPOSED EDGES SHALL BE FINISHED WITH AN EDGING TOOL.
2. TYPE 1A INLET HOOKUP WILL BE PAID EACH REGARDLESS OF SIZE.
3. ADDITIONAL CURB & GUTTER CONSTRUCTION NECESSARY TO CONNECT SET BACK INLET TO PAVEMENT WILL BE PAID FOR AT THE UNIT PRICE BID FOR EACH INLET

**PAVEMENT UNDERDRAIN DETAIL**

**TYPE 1A INLET HOOKUP**

( BY PAVING CONTRACTOR )

**INLET HOOKUP AND PAVEMENT UNDERDRAIN DETAILS**

SHEET TITLE  
472-84613  
PROJECT NUMBER

DESIGN BY: DFL  
DRAWN BY: MKK  
CHECKED BY: GJA

ISSUED: August 2009  
REVISED:

SHEET NO.  
6 of 27