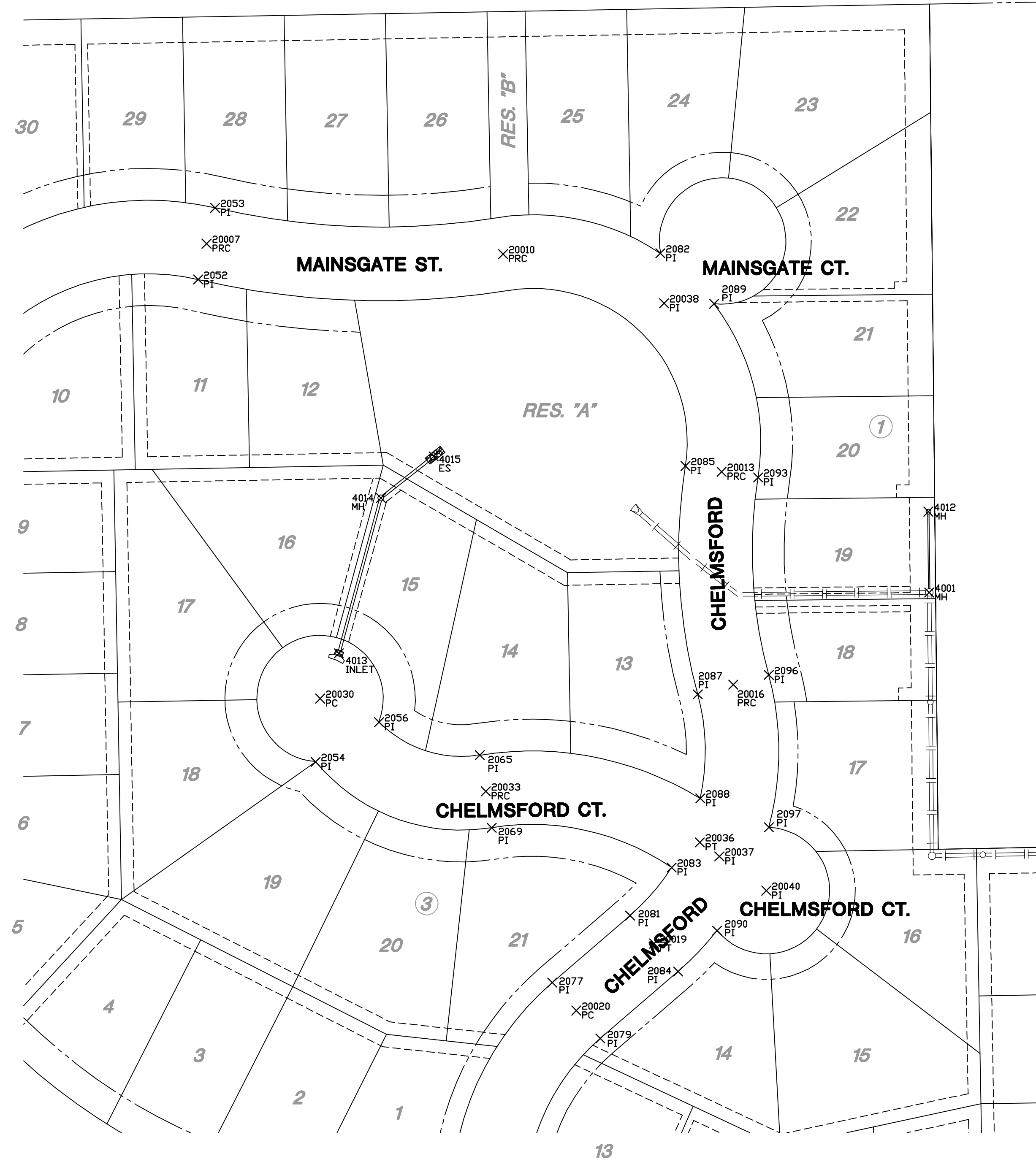


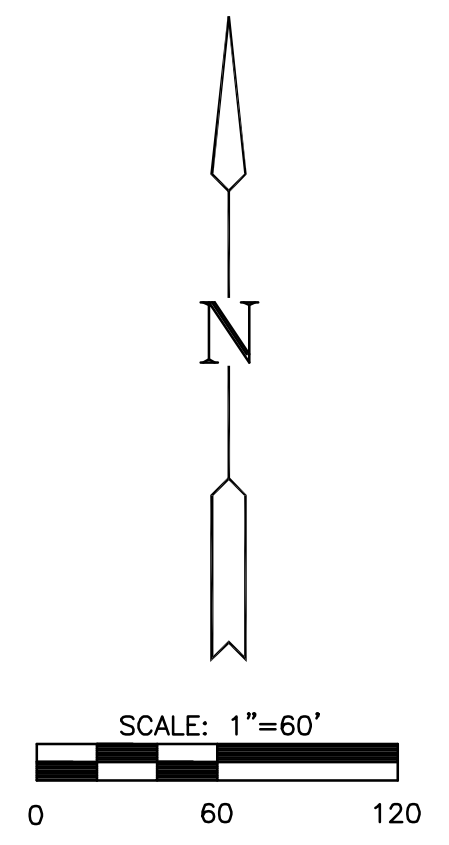
**PAVING & INCIDENTAL DRAINAGE PLANS**  
**MONARCH LANDING SECOND ADDITION**  
**PHASE 2 PART B**



PLAT IRONS			
Point #	Northing	Easting	Desc.
2002	1702697.82	1693442.28	PI
2003	1702059.84	1693448.17	PI
2004	1702055.84	1693448.77	PI
2005	1701490.86	1693453.60	PI
2007	1702070.40	1693508.43	PI
2008	1702006.40	1693508.03	PI
2009	1702350.55	1693592.03	PI
2010	1702138.44	1693596.13	PI
2011	1702467.84	1693601.95	PI
2012	1701512.54	1693610.28	PI
2013	1702076.78	1693610.66	PI
2014	1701482.35	1693612.34	PI
2015	1701770.97	1693612.82	PI
2016	1702012.89	1693615.26	PI
2017	1702574.81	1693619.26	PI
2019	1702346.76	1693649.90	PI
2020	1702205.32	1693663.72	PI
2021	1702484.07	1693668.83	PI
2022	1701628.76	1693667.38	PI
2023	1702059.56	1693666.26	PI
2024	1701636.74	1693666.94	PI
2025	1701519.93	1693673.85	PI
2026	1701497.94	1693676.09	PI
2027	1701762.34	1693676.23	PI
2028	1701475.48	1693677.73	PI
2029	1702020.86	1693678.65	PI
2030	1701628.19	1693688.48	PI
2031	1701686.17	1693690.04	PI
2035	1701655.71	1693779.98	PI
2036	1701481.97	1693826.65	PI
2037	1701936.03	1693808.29	PI
2038	1702019.02	1693816.91	PI
2039	1702027.45	1693825.10	PI
2040	1702099.63	1693835.13	PI
2041	1701975.20	1693961.21	PI
2043	1701686.28	1693968.94	PI
2044	1702474.50	1693970.38	PI
2045	1702500.00	1693983.04	PI
2046	1702102.18	1693993.07	PI
2047	1701944.33	1700008.61	PI
2048	1702516.78	1700011.37	PI
2049	1701891.35	1700062.02	PI
2050	1701608.09	1700066.45	PI
2052	1702038.99	1700092.98	PI
2053	1702580.46	1700096.25	PI
2054	1702128.90	1700286.47	PI
2056	1702155.11	1700336.38	PI
2059	1701767.20	1700373.68	PI
2060	1701703.71	1700374.25	PI
2062	1701767.00	1700386.94	PI
2063	1701801.50	1700383.73	PI
2065	1702129.24	1700414.79	PI
2066	1701554.12	1700417.77	PI
2069	1702072.00	1700424.14	PI
2070	1702852.72	1700426.45	PI
2071	1702495.47	1700437.75	PI
2072	1701548.28	1700445.35	PI
2073	1701760.66	1700447.59	PI
2074	1701795.16	1700451.38	PI
2077	1701549.89	1700471.83	PI
2078	1701678.55	1700486.88	PI
2079	1701925.96	1700509.70	PI
2080	1701737.59	1700524.60	PI
2081	1702002.70	1700538.09	PI
2082	1702524.62	1700556.99	PI
2083	1702040.89	1700560.88	PI
2084	1701958.77	1700570.96	PI
2085	1702957.07	1700576.67	PI
2086	1701705.43	1700585.38	PI
2087	1702177.18	1700586.43	PI
2088	1702085.19	1700588.37	PI
2089	1702484.90	1700598.26	PI
2090	1701990.92	1700601.64	PI
2093	1702347.98	1700633.95	PI
2096	1702192.37	1700642.58	PI
2097	1702072.39	1700642.48	PI
2099	1701678.29	1700678.99	PI
2101	1702721.11	1700768.89	PI
2102	1702058.06	1700775.66	PI
2103	1701880.98	1700830.90	PI
2105	1701652.41	1700838.58	PI
2106	1701903.02	1700871.31	PI
2107	1701772.33	1700872.61	PI
2108	1701616.01	1700886.21	PI
2109	1701954.04	1700995.40	PI
2111	1701642.30	1701000.26	PI
2113	1701903.60	1701028.30	PI
2114	1701772.91	1701030.61	PI
2115	1702062.11	1701170.72	PI
2116	1701846.42	1701174.83	PI

PAVING POINTS			
Point #	Northing	Easting	Desc.
20007	1702832.23	1700199.62	PRC
20010	1702824.10	1700433.10	PRC
20013	1702362.52	1700895.31	PRC
20016	1702194.75	1700814.41	PRC
20019	1701980.74	1700552.02	P.T
20020	1701927.93	1700400.77	P.C
20030	1702173.77	1700288.99	P.C
20033	1702100.62	1700419.47	PRC
20036	1702080.53	1700588.08	P.T
20037	1702049.35	1700603.46	PI
20038	1702485.35	1700559.89	PI
20040	1702022.43	1700640.46	PI

STORM SEWER POINTS			
Point #	Northing	Easting	Desc.
4001	1702257.40	1700788.74	MH
4012	1702321.08	1700788.07	MH
4013	1702209.48	1700303.83	INLET
4014	1702331.87	1700339.93	MH
4015	1702364.86	1700378.46	ES



**BUBBLE MAP**  
SHEET TITLE  
472-84613  
PROJECT NUMBER

DESIGN BY: **DFL**  
DRAWN BY: **JWC**  
CHECKED BY: **GJA**

ISSUED: **August 2009**  
REVISED:

SHEET NO.  
**16 of 27**

PLOTTED: Tuesday, August 25, 2009 @ 01:21PM

J:\CIVIL\06201\07165\PAV\PHASE 2\PHASE2B\BUBBLE.DWG