

| STATE | PROJECT NO. | YEAR | SHEET NO. | TOTAL SHEETS |
|--------|-------------|------|-----------|--------------|
| KANSAS | 87N-0238-01 | 2009 | 2 | 59 |

GENERAL NOTES:

UTILITY SERVICE LINES, POLES, VALVE BOXES, METERS AND ETCETERA ARE TO BE ADJUSTED AS NECESSARY BY OTHERS PRIOR TO CONSTRUCTION UNLESS THE PLANS SPECIFICALLY CALL FOR THEIR ADJUSTMENT BY THE CONTRACTOR OR UNLESS THE PLANS SPECIFICALLY IDENTIFY A UTILITY TO BE ADJUSTED BY ITS OWNER DURING CONSTRUCTION. EXISTING UTILITIES AND THEIR LOCATION AS SHOWN ON THE PLANS REPRESENT THE BEST INFORMATION OBTAINABLE FOR DESIGN. THE CONTRACTOR WILL BE REQUIRED TO WORK AROUND EXISTING UTILITIES WITHIN THE RIGHT-OF-WAY WHICH DO NOT CONFLICT WITH PROPOSED CONSTRUCTION.

THE CONTRACTOR SHALL PROVIDE A MINIMUM OF FORTY-EIGHT (48) HOURS ADVANCE NOTICE TO ALL UTILITY OWNERS PRIOR TO WORK IN ANY AREA WHERE EXISTING UTILITIES WILL BE UNCOVERED TO ALLOW THE UTILITY OWNERS TO INSPECT THE UNCOVERING OF THEIR UTILITY. ANY UTILITY CARELESSLY DAMAGED BY CONSTRUCTION OPERATION SHALL BE REPAIRED OR REPLACED AT CONTRACTOR'S EXPENSE. THE CONTRACTOR SHALL COORDINATE WITH CONTRACTORS FOR UTILITY COMPANIES AND OTHER AGENCIES FOR MINIMUM INCONVENIENCE TO GENERAL PUBLIC.

CONTRACTOR SHALL AVOID UNCOVERING THE EXISTING WATERLINES UNLESS ABSOLUTELY NECESSARY. UNCOVERING SHALL BE DONE ONLY IN THE PRESENCE OF THE ENGINEER.

ALL ADJACENT BUILDINGS, STRUCTURES, PARKING LOTS, DRIVES, STREET PAVEMENTS, UTILITY LINES UTILITY STRUCTURES AND APPURTENANCES, OTHER THAN SHOWN FOR REPLACEMENT SHALL BE PROTECTED FROM DAMAGE DURING CONSTRUCTION OF THE PROJECT. ITEMS DAMAGED BEYOND THE LIMITS SHOWN ON THE DRAWINGS SHALL BE REMOVED AND REPLACED BY THE CONTRACTOR AT THE CONTRACTOR'S EXPENSE.

A SAW CUT OF FULL DEPTH OF EXISTING SURFACE COURSES SHALL BE PROVIDED AT LOCATIONS WHERE PROPOSED CONSTRUCTION ABUTS AN EXISTING SURFACE COURSE OR PAVEMENT FOR WHICH PARTIAL REMOVAL OF THAT SURFACE OR PAVEMENT IS REQUIRED. SAWED JOINTS TO FACILITATE REMOVAL WITHIN THREE (3) FEET OF AN EXISTING JOINT WILL NOT BE PERMITTED, AND FOR SUCH INSTANCES THE LIMITS OF REMOVAL SHALL EXTEND TO THE EXISTING JOINT. SUCH SAW CUTS WILL NOT BE PAID FOR DIRECTLY AND THIS COST SHALL BE CONSIDERED AS SUBSIDIARY TO THE REMOVAL OF THE SURFACE OR PAVEMENT.

RUBBLE RESULTING FROM THE REMOVAL OF MISCELLANEOUS STRUCTURES AND EXCAVATION WHICH IS TO BE WASTED SHALL BE DISPOSED OF ON SITES TO BE PROVIDED BY THE CONTRACTOR. THESE SITES SHALL BE APPROVED BY THE ENGINEER AS TO SUITABILITY, APPEARANCE AND SITE LOCATION. LOCATIONS THAT, IN THE OPINION OF THE ENGINEER, LEAVE AN UNSIGHTLY APPEARANCE WILL NOT BE APPROVED.

ALL DISPOSAL SITES MUST BE APPROVED BY THE KANSAS DEPARTMENT OF HEALTH AND ENVIRONMENT. MATERIAL EITHER STOCKPILED OR DISPOSED OF IN A FLOOD PLAIN WOULD REQUIRE A KANSAS STATE BOARD OF AGRICULTURE PERMIT. ANY MATERIAL DUMPED IN WATERS OF THE UNITED STATES OR WETLANDS IS SUBJECT TO U.S. CORPS OF ENGINEERS PERMITTING REGULATIONS. ANY MATERIAL BURIED OR STOCKPILED BEYOND APPROVED CONSTRUCTION LIMITS WOULD REQUIRE ADDITIONAL ARCHAEOLOGICAL INVESTIGATIONS UNLESS BURIED IN A PREVIOUSLY APPROVED BORROW LOCATION.

THE CONTRACTOR SHALL BE RESPONSIBLE FOR PRESERVING PROPERTY IRONS SHOWN ON THE PLANS. THE CONTRACTOR WILL BE REQUIRED TO RE-ESTABLISH ANY SHOWN PROPERTY IRONS WHICH ARE DAMAGED OR DESTROYED BY CONSTRUCTION OPERATIONS. SUCH IRONS SHALL BE RE-ESTABLISHED BY A LICENSED LAND SURVEYOR IN ACCORDANCE WITH STATE LAW. THIS WORK SHALL BE SUBSIDIARY TO OTHER ITEMS IN CONTRACT.

ALL SALVAGEABLE DRAINAGE PIPES, MANHOLE RINGS AND COVERS, INLET GRATES, AND TRAFFIC SIGNS SHALL BE CAREFULLY REMOVED AND DELIVERED TO THE CITY OF WICHITA, AS DIRECTED BY CITY PERSONNEL.

ATT
154 N. BROADWAY
WICHITA, KANSAS 67202
JASON EDWARDS
316-268-2245

WESTAR ENERGY
1900 EAST CENTRAL
WICHITA, KANSAS 67214
MILES CAPPS
316-261-6824
(ELECTRIC)

WICHITA SEWER MAINTENANCE DIVISION
8TH FLOOR-CITY HALL
455 N. MAIN STREET
WICHITA, KANSAS 67202
LADONNA LAWRENZ
316-268-4555

KANSAS GAS SERVICE
1021 EAST 26TH STREET NORTH
WICHITA, KANSAS 67219
JIM COE
316-832-3122
(GAS)

WICHITA WATER AND SEWER DEPARTMENT
8TH FLOOR - CITY HALL
455 N. MAIN STREET
WICHITA, KANSAS 67202
GREG LOLLEY
316-268-4555

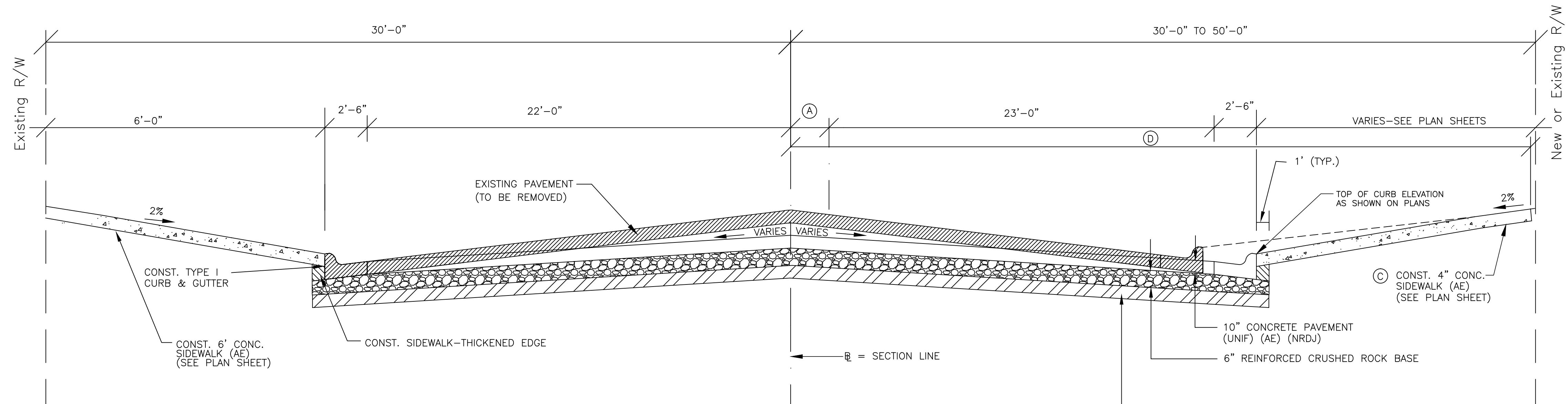
KANSAS ONE-CALL
1-800-344-7233
DIG SAFE
687-2470

AQUILA NATURAL GAS
1611 S. HOOVER
WICHITA, KANSAS 67213
CAVIN BRIGGS
316-941-1608

COX COMMUNICATIONS
701 E. DOUGLAS
WICHITA, KS 67202
EVA MOORE
316-262-4270

IN ACCORDANCE WITH OVERHEAD POWER LINE PREVENTION ACT, THE CONTRACTOR SHALL NOTIFY WESTAR TO ARRANGE FOR APPROPRIATE SAFETY PRECAUTIONS BEFORE WORKING WITHIN 10 FEET OF AN OVERHEAD HIGH VOLTAGE LINE.

ALL TREES, HEDGE ROWS, SHELTER BELTS, AND WOODY SHRUBS NOT SHOWN TO BE REMOVED AND LOCATED BETWEEN THE CONSTRUCTION LIMITS AND THE RIGHT-OF-WAY LINE OR EASEMENT LINE SHALL BE SAVED UNLESS DIRECTED BY THE ENGINEER TO BE REMOVED. ALL TREES WITHIN THE APPROPRIATE CLEAR ZONE SHALL BE REMOVED.



TYPICAL SECTION

Sta. 27+07.15 to Sta. 37+60.13

- (A) 'A' VARIES FROM 0' @ STA 29+95 (RT) TO 11' @ STA. 31+60 (RT)
'A' = 11' FROM STA. 31+60 (RT) TO STA. 34+21.86 (RT)
'A' VARIES FROM 11' @ STA. 34+21.86 (RT) TO 0' @ STA. 36+50.03 (RT)
- (C) 'C' = 6' WIDTH FROM STA 27+07.15 (RT) TO STA. 30+19.10 (RT)
'C' = 5' WIDTH FROM STA 30+29.10 (RT) TO STA. 35+90.72 (RT)
'C' = 6' WIDTH FROM STA 35+90.72 (RT) TO STA. 36+81.98 (RT)
- (D) 'D' = 30' FROM STA 27+07.15 (RT) TO STA. 29+67.19 (RT)
'D' VARIES FROM 30' @ STA. 29+67.19 (RT) TO 40' @ STA. 29+75.50 (RT)
'D' = 40' @ STA. 29+75.50 (RT) TO STA. 29+93.50 (RT)
'D' VARIES FROM 30' @ STA. 29+93.50 (RT) TO 50' @ STA. 32+23.52 (RT)
'D' VARIES FROM 50' @ STA. 32+23.52 (RT) TO 69.32' @ STA. 32+42.84 (RT)
'D' VARIES FROM 69.35' @ STA. 33+18.91 (RT) TO 50' @ STA. 33+38.56 (RT)
'D' = 50' @ STA. 33+38.56 (RT) TO 50' @ STA. 36+01.01 (RT)
'D' VARIES FROM 48' @ STA 36+61.01 (RT) TO 30' @ STA. 36+87.07 (RT)

TYPICAL SECTION GENERAL NOTES:

ALL DISTURBED AREAS TO BE SODED EXCEPT WHERE SHOWN ON PLANS

SEE PLAN SHEETS FOR TOP OF CURB AND CROWN ELEVATIONS

SAWCUTS ARE TO BE FULL DEPTH AND WILL BE SUBSIDIARY TO THE BID ITEM ROCK EXCAVATION

SIDEWALK THROUGH DRIVEWAYS BUILD AT 8" THICKNESS PAY ITEM INCLUDED AS 8" DRIVE BY CONCRETE PAVEMENT

COMPACTION NOTE:

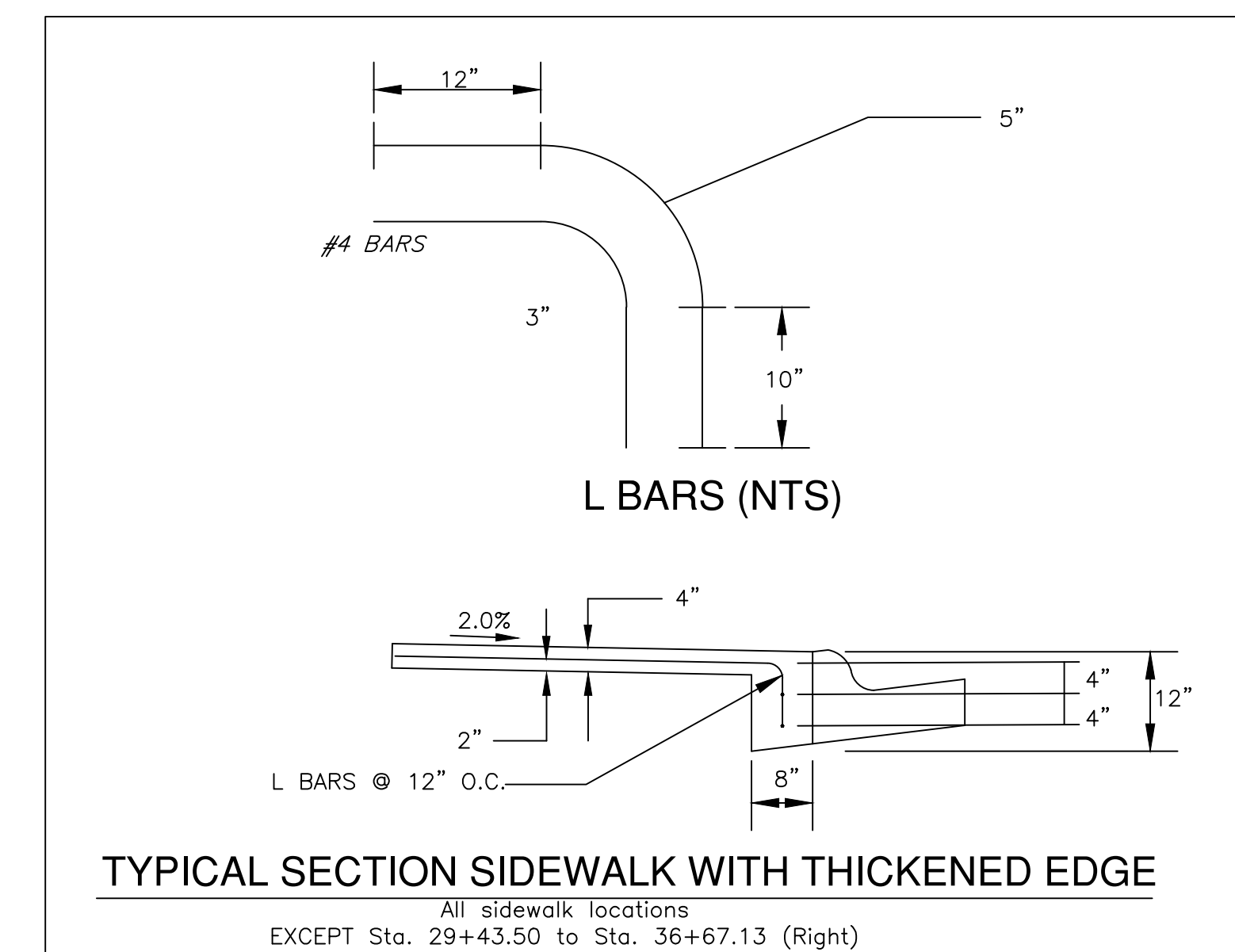
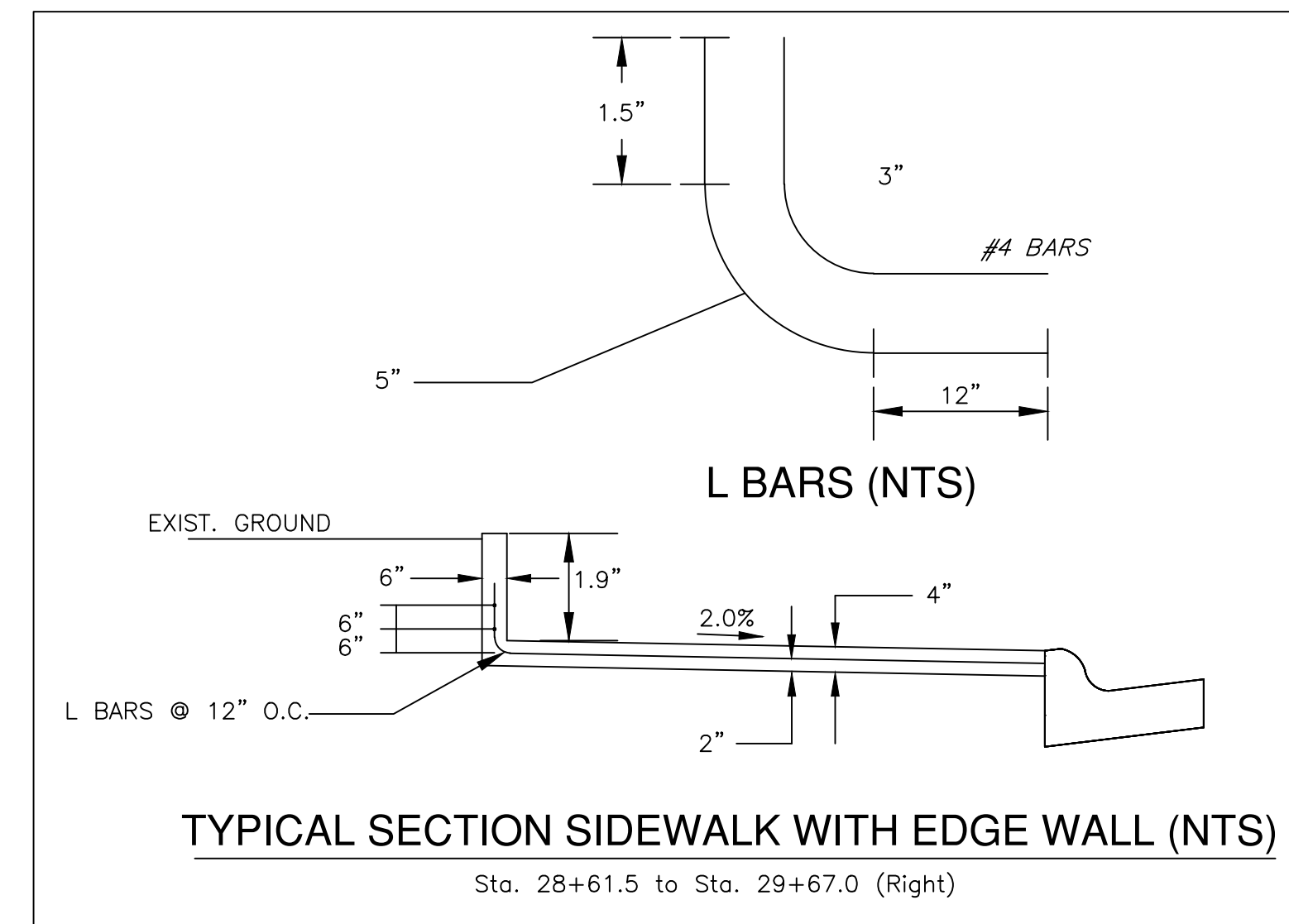
THE SUBGRADE WILL BE PREPARED IN ACCORDANCE WITH THE CITY STANDARD SPECIFICATION 401. THIS WORK WILL BE SUBSIDIARY TO THE BID ITEM "REINFORCED CRUSHED ROCK BASE (6)".

CRUSHED ROCK GRADATION REQUIREMENTS
Percent of Aggregate Retained

| | |
|--------|---------|
| 2-1/2" | 0 |
| 3/4" | 20 - 60 |
| #4 | 50 - 80 |
| #40 | 80 - 94 |
| #200 | 90 - 98 |

ROCK QUALITY SHALL CONFORM TO THE REQUIREMENTS SPECIFIED BY THE KDOT 1990 EDITION STANDARD SPECIFICATION SUBSECTION 1102 FOR DURABILITY CLASS 1.

FABRIC BASE REINFORCEMENT SHALL BE BX 1100 BY TENSAR CORP. OR APPROVED EQUAL. FABRIC BASE REINFORCEMENT SHALL BE INSTALLED IN ACCORDANCE WITH MANUFACTURERS RECOMMENDATIONS. CRUSHED ROCK SHALL BE UNIFORMLY GRADED FROM 1 1/2" MAXIMUM SIZE TO NOT MORE THAN 10% PASSING A NO. 200 SIEVE. ROCK QUALITY SHALL BE THE SAME AS SPECIFIED FOR COARSE AGGREGATE FOR CONCRETE MIXES.



KANSAS DEPARTMENT OF TRANSPORTATION

TYPICAL SECTION