

Benchmark:
Sta. 14+25.87 (Mosley) 32' Rt.
SW Corner of 4" curb at the S. Side of Jimmie Jones
Co., Approx. 30' W of the SW corner building or at
the back of sidewalk.
Elev. = 1304.66

Thimble
Sta. 27+94.83 No offset

| STATE | PROJECT NO. | YEAR | SHEET NO. | TOTAL SHEETS |
|--------|-------------|------|-----------|--------------|
| KANSAS | 87N-0238-01 | 2009 | 3 | 59 |

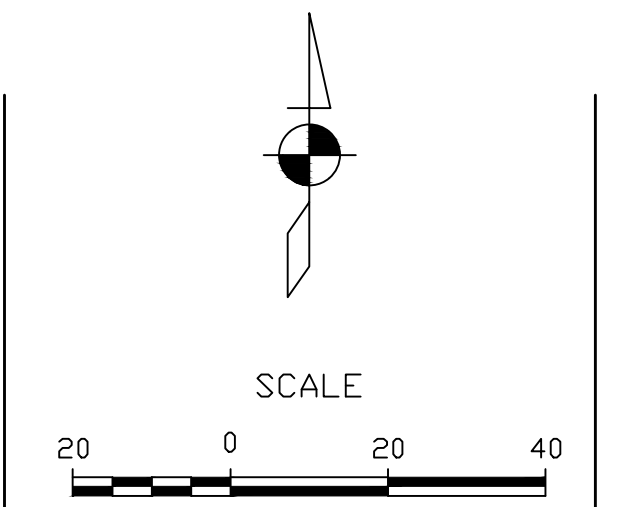
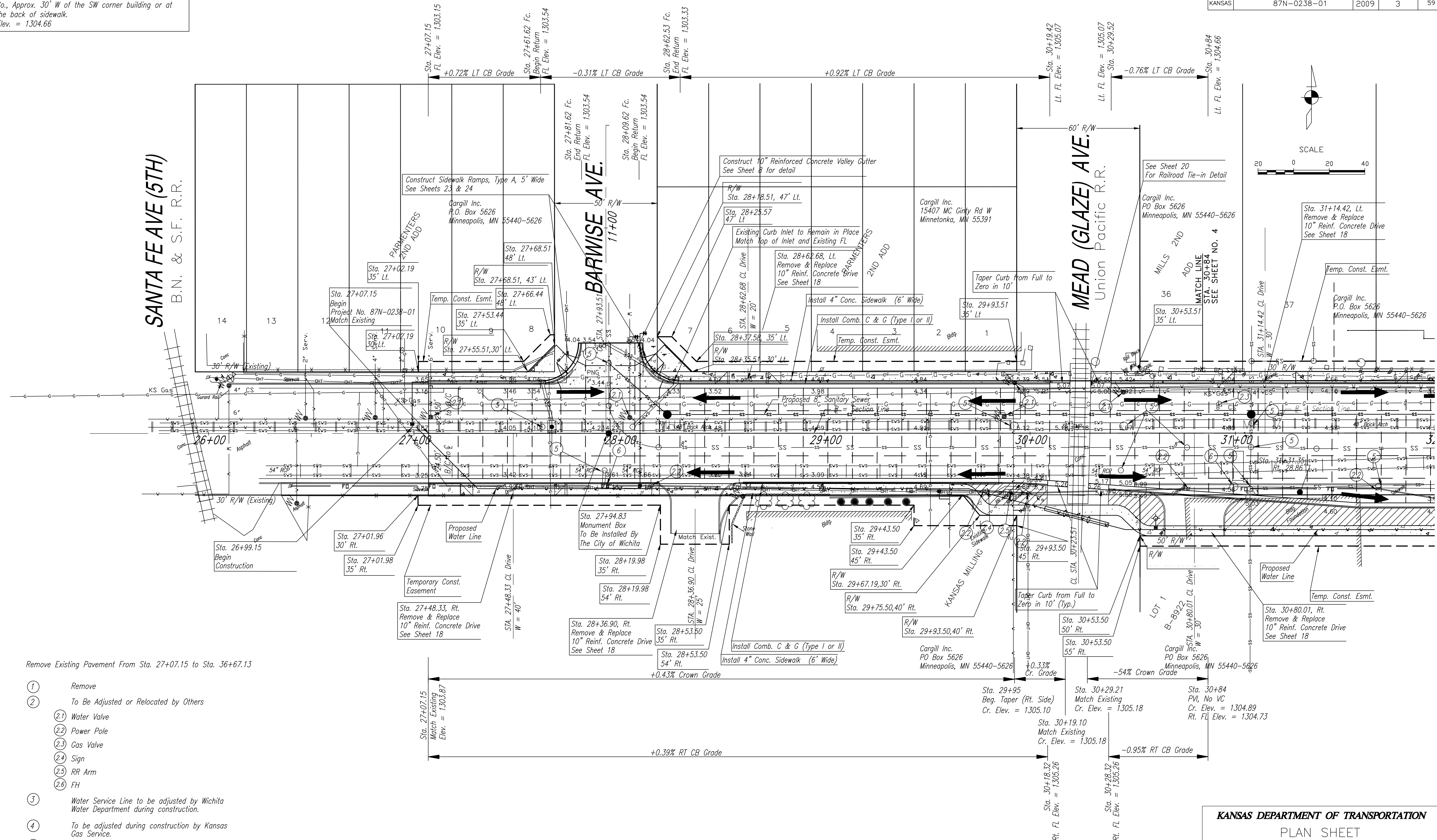
| DATE | BY |
|------|----|
| | |
| | |

| REFERENCES NOTED | REFERENCES CHECKED |
|------------------|--------------------|
| | |
| | |

SANTA FE AVE (5TH)
B.N. & S.F. R.R.

BARWISE AVE.
11+00

MEAD (GLAZE) AVE.
Union Pacific R.R.



Remove Existing Pavement From Sta. 27+07.15 to Sta. 36+67.13

- ① Remove
- ② To Be Adjusted or Relocated by Others
- ②.1 Water Valve
- ②.2 Power Pole
- ②.3 Gas Valve
- ②.4 Sign
- ②.5 RR Arm
- ②.6 FH
- ③ Water Service Line to be adjusted by Wichita Water Department during construction.
- ④ To be adjusted during construction by Kansas Gas Service.
- ⑤ Adjust Manhole/Replace Lid & Ring
- ⑥ Adjust Manhole



KANSAS DEPARTMENT OF TRANSPORTATION
PLAN SHEET
13TH STREET NORTH
STA. 27+07.15 TO STA. 30+84