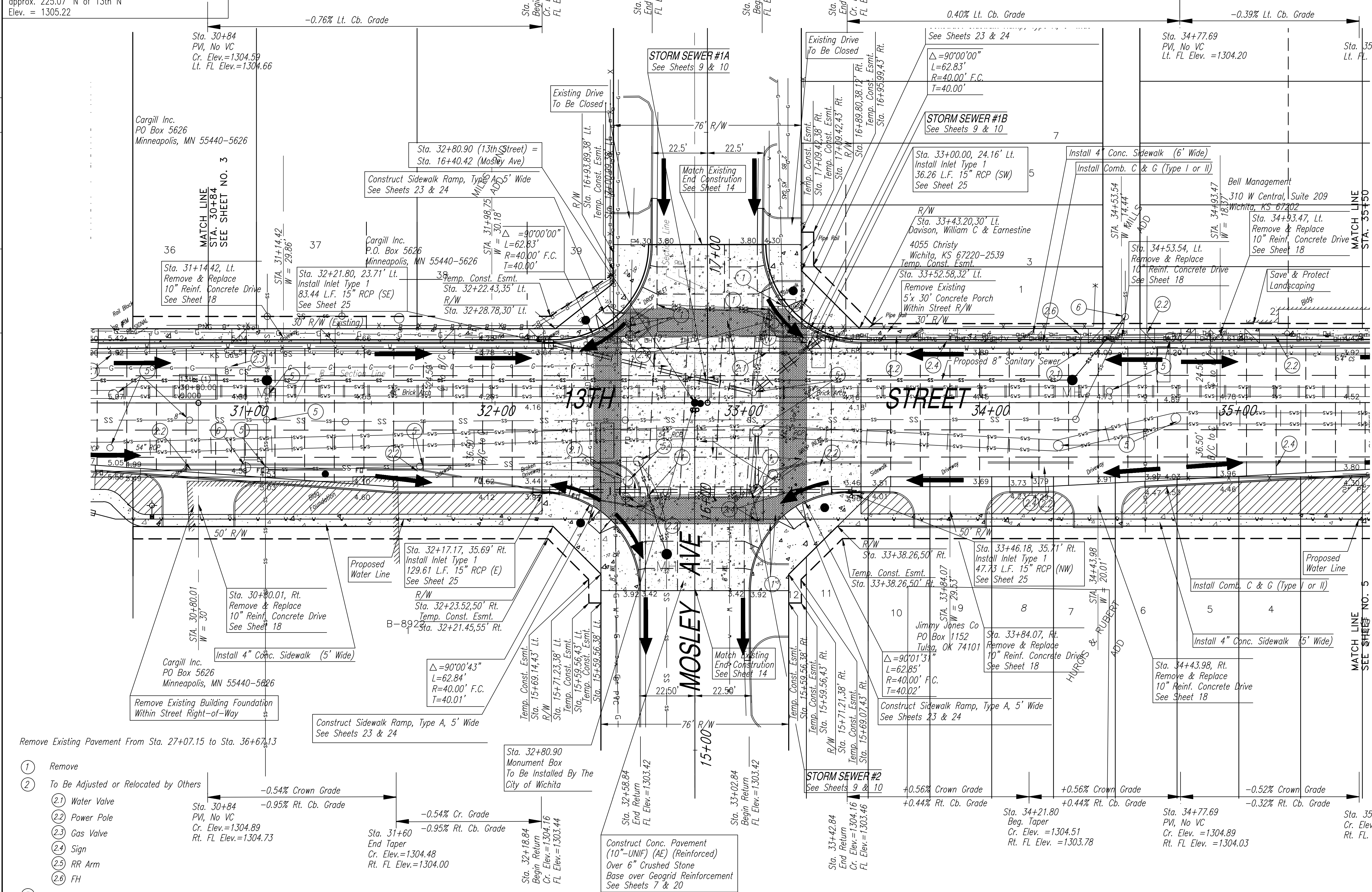
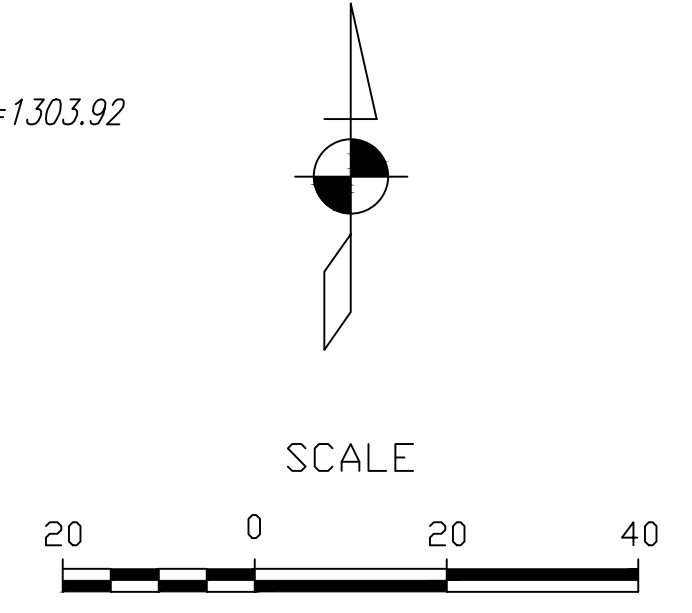


Benchmark:  
Sta. 18+65.58 (Mosley) 39' Lt.  
Square cut on back of sidewalk at N end of 6" chainlink fence abuts concrete wall, W side of Mosley approx. 225.07' N of 13th N Elev. = 1305.22

Thimble  
32+83.11 No offset

STATE	PROJECT NO.	YEAR	SHEET NO.	TOTAL SHEETS
KANSAS	87N-0238-01	2009	4	59

DATE	BY	REFERENCES NOTED	REFERENCES CHECKED



- ① Remove
- ② To Be Adjusted or Relocated by Others
  - ②.1 Water Valve
  - ②.2 Power Pole
  - ②.3 Gas Valve
  - ②.4 Sign
  - ②.5 RR Arm
  - ②.6 FH
- ③ Water Service Line to be adjusted by Wichita Water Department during construction.
- ④ To be adjusted during construction by Kansas Gas Service.
- ⑤ Adjust Manhole/Replace Lid & Ring
- ⑥ Adjust Manhole

(10"-UNIF) (AE) (Reinforced) Over 6" Crushed Stone Base over Geogrid Reinforcement  
 Sod Indicated areas with Bermuda Sod

**KANSAS DEPARTMENT OF TRANSPORTATION**  
 PLAN SHEET  
 13TH STREET NORTH  
 STA. 30+84 TO STA. 35+50

NOTE: See Mosley Intersection Detail Sheet