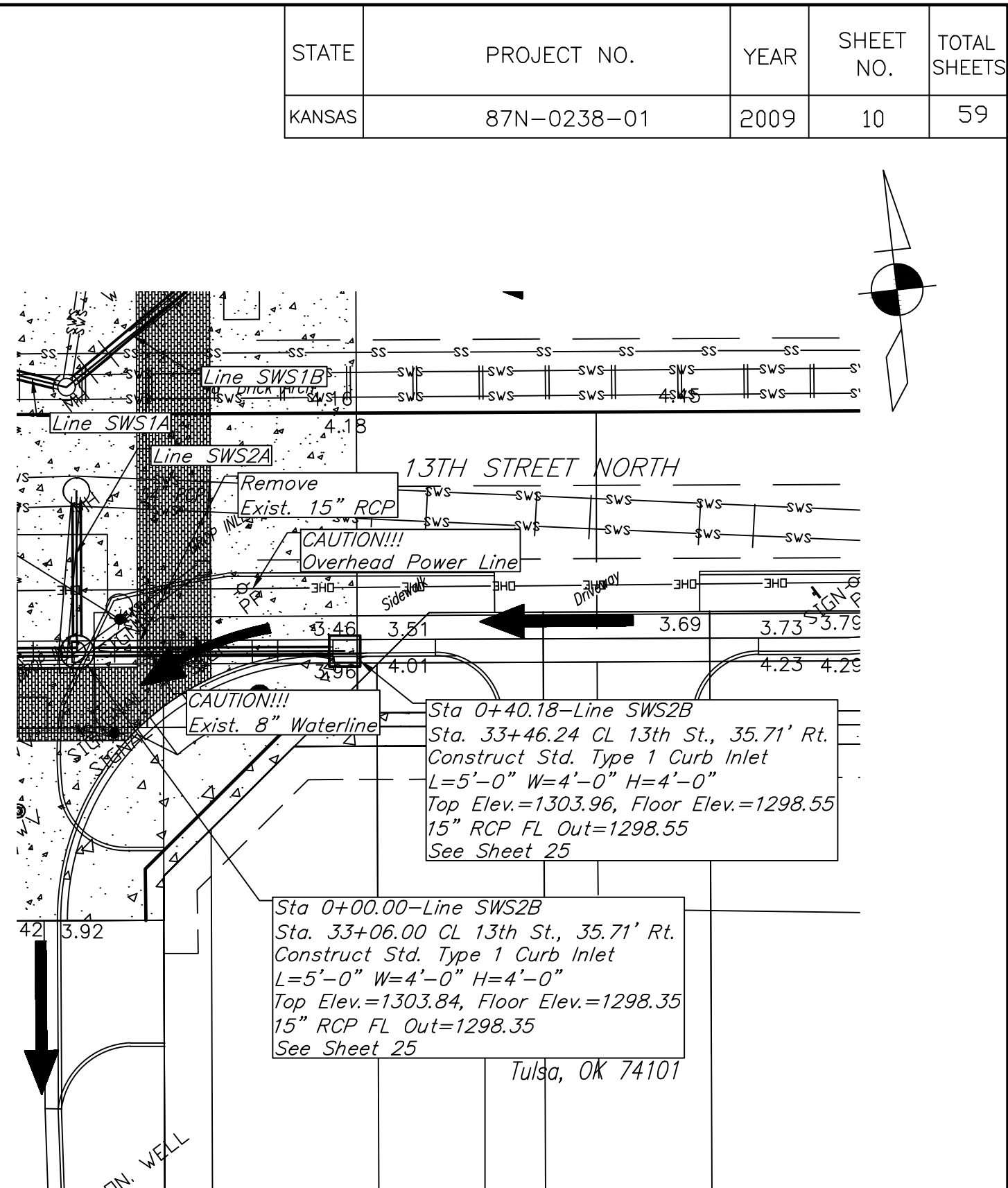
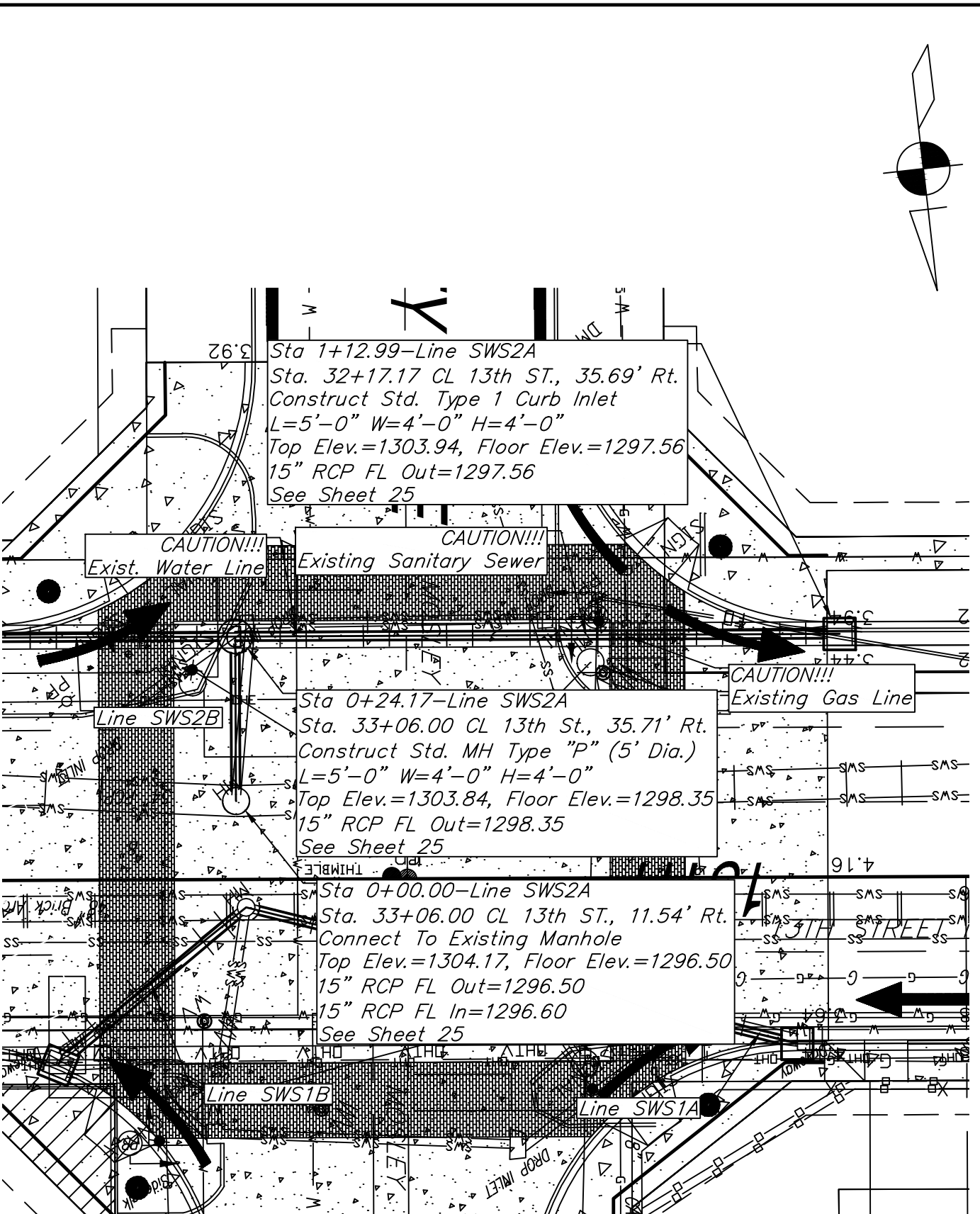
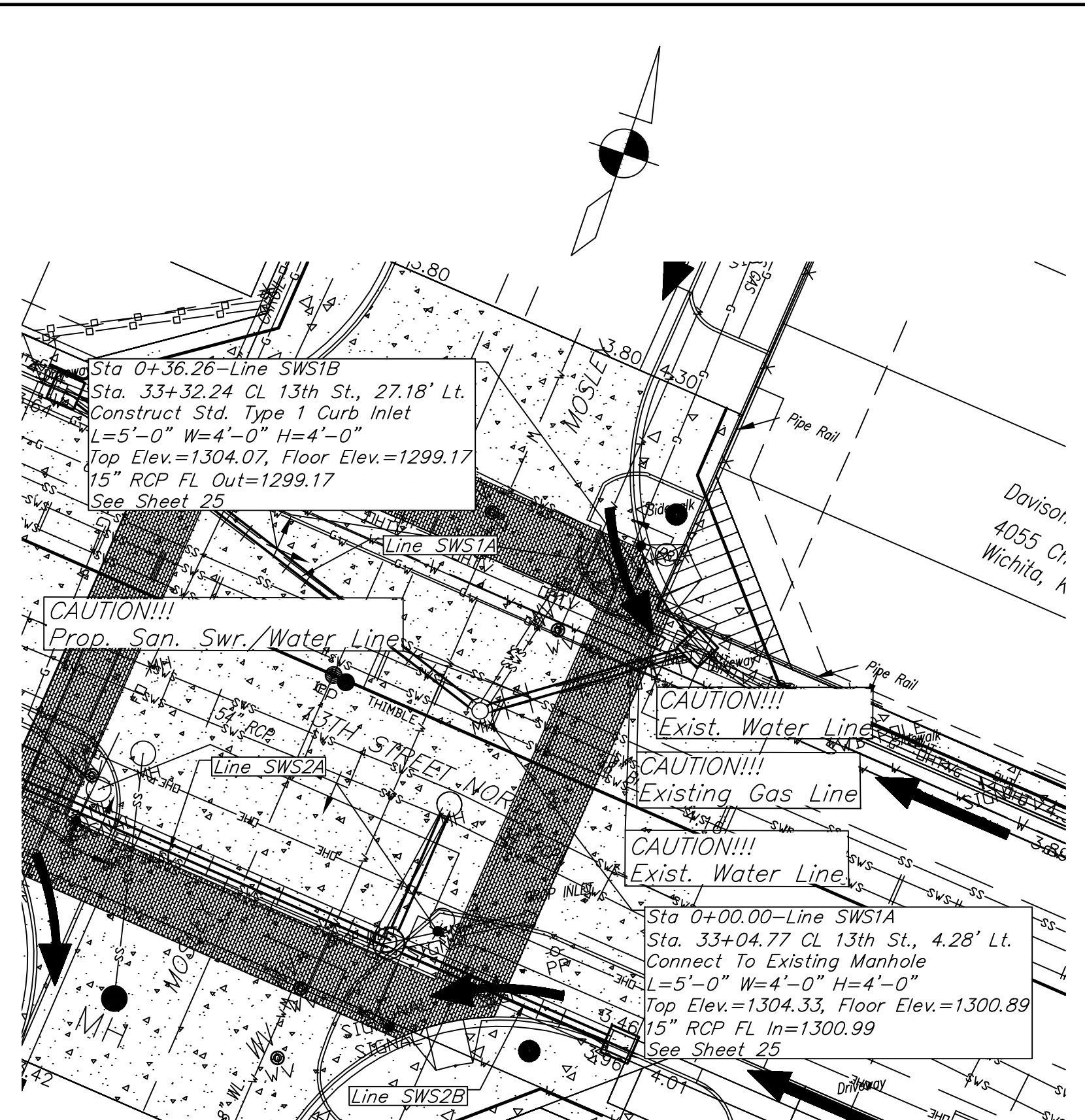
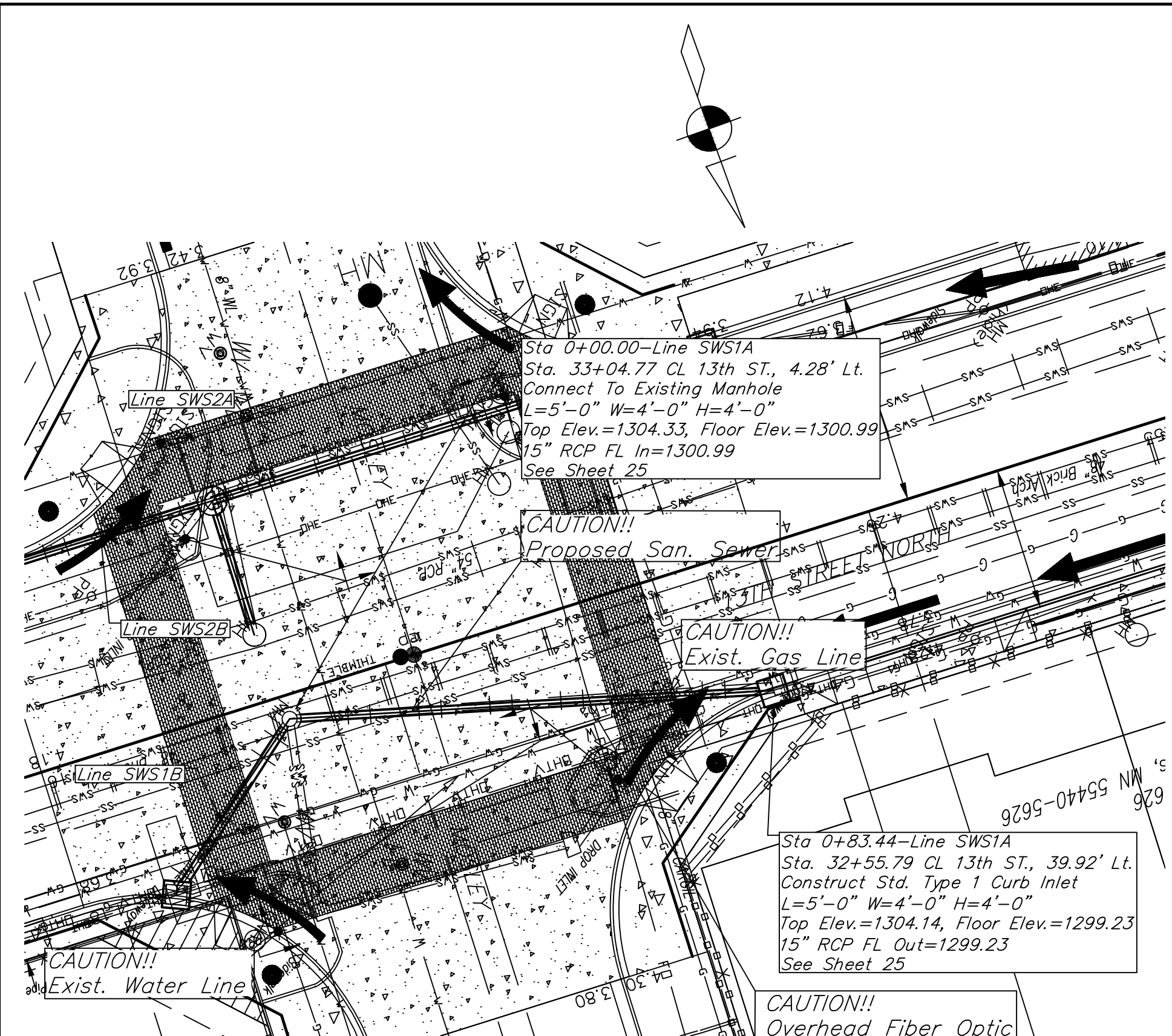
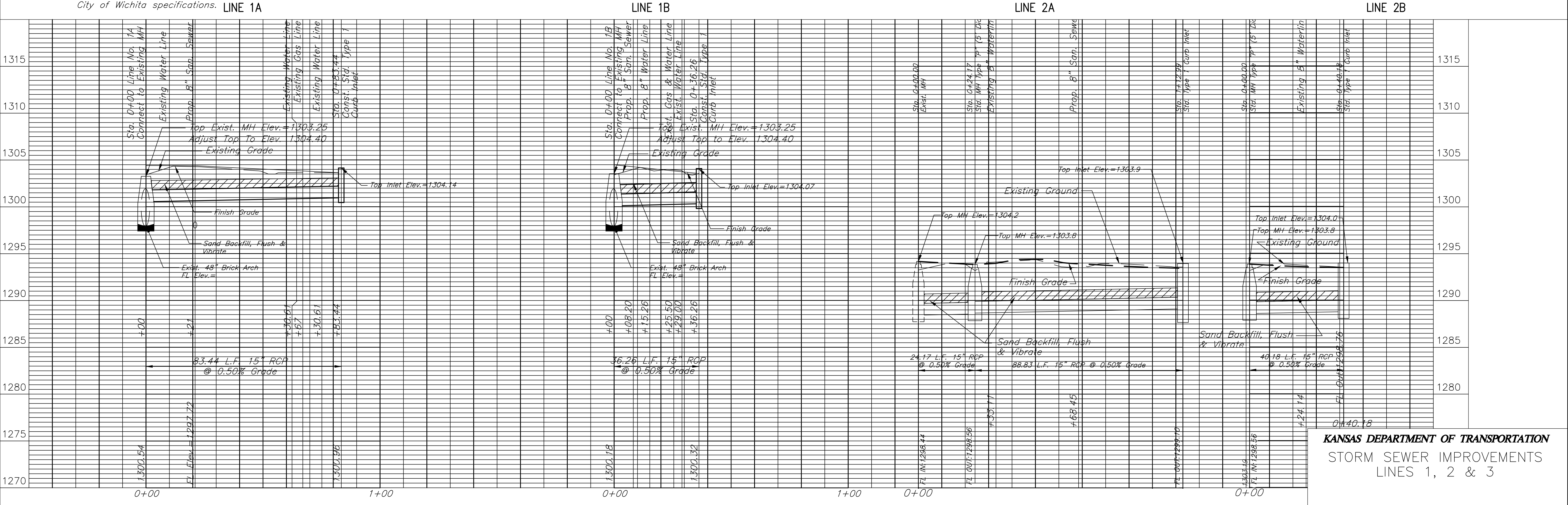


STATE	PROJECT NO.	YEAR	SHEET NO.	TOTAL SHEETS
KANSAS	87N-0238-01	2009	10	59

DATE	
BY	
REFERENCES NOTED	
REFERENCES CHECKED	



- NOTE:
- Contractor shall exercise extreme caution when connecting to existing Brick Arch. All work associated with supporting and connecting to Brick Arch shall be Subsidiary to the project.
 - Sand backfill, flush and vibrate all trenches in accordance with City of Wichita specifications.



KANSAS DEPARTMENT OF TRANSPORTATION
STORM SEWER IMPROVEMENTS
LINES 1, 2 & 3