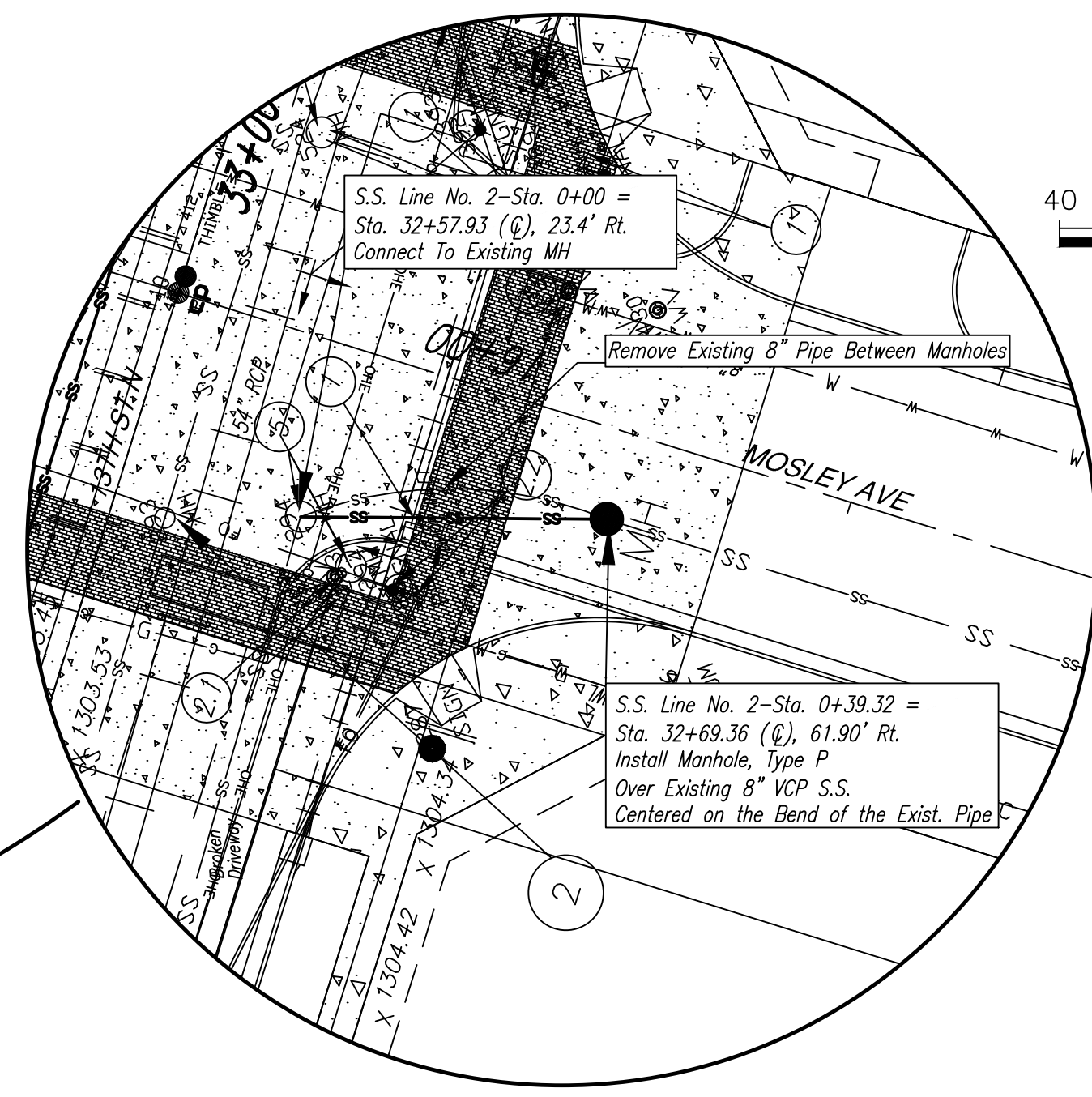
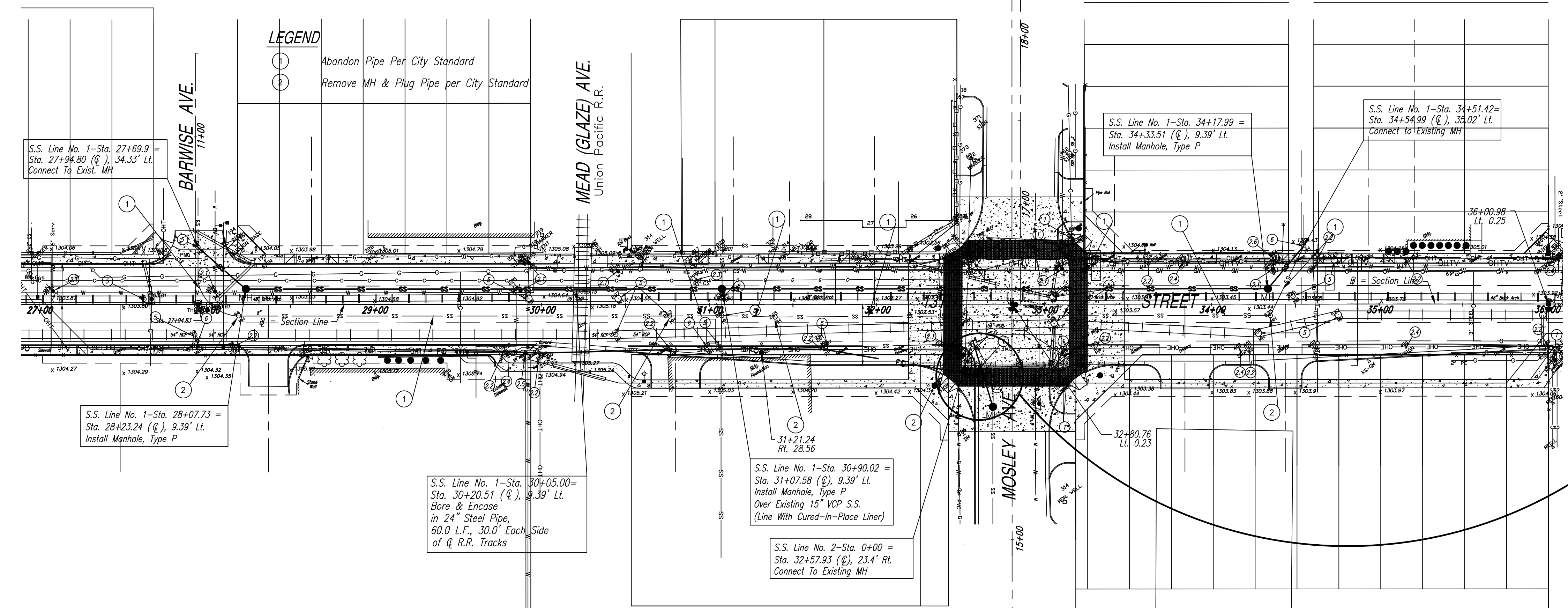


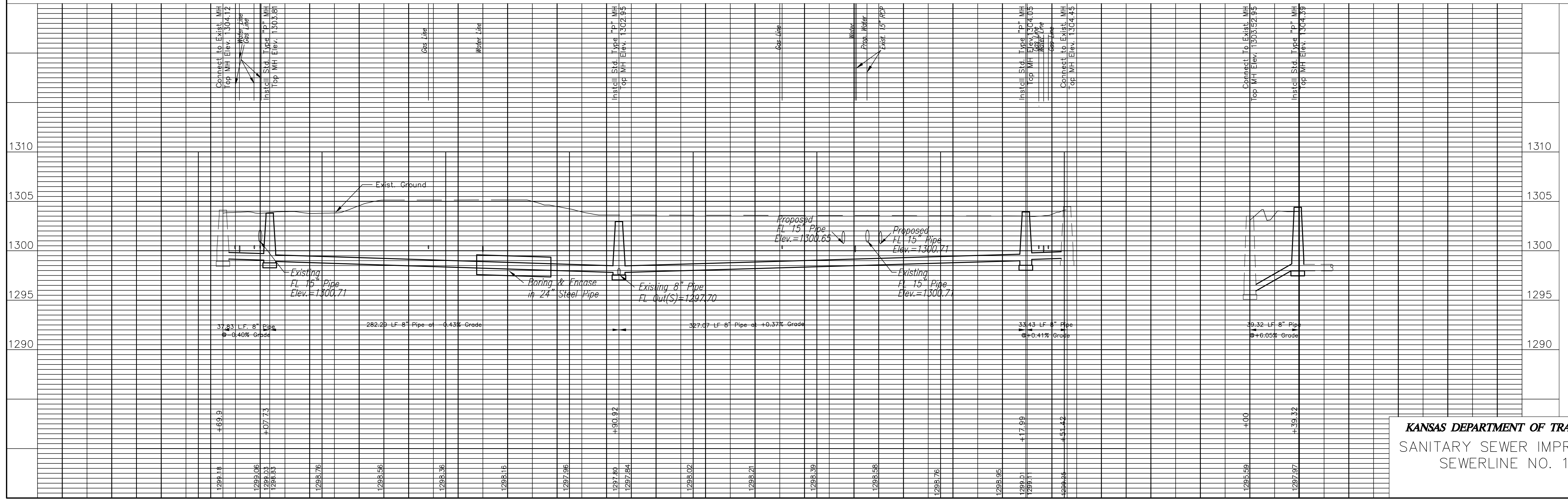
BY	DATE
REFERENCES NOTED	CHECKED



- NOTE:
1. Sand backfill, flush and vibrate all trenches in accordance with City of Wichita specifications.
 2. See Sheet 16 for Manhole Detail

LINE NO. 1

LINE NO. 2



KANSAS DEPARTMENT OF TRANSPORTATION
 SANITARY SEWER IMPROVEMENTS
 SEWERLINE NO. 1 & 2