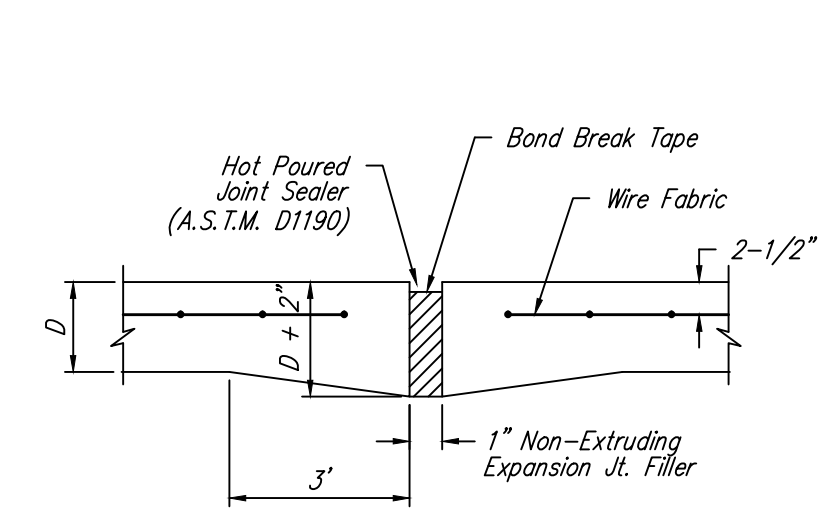


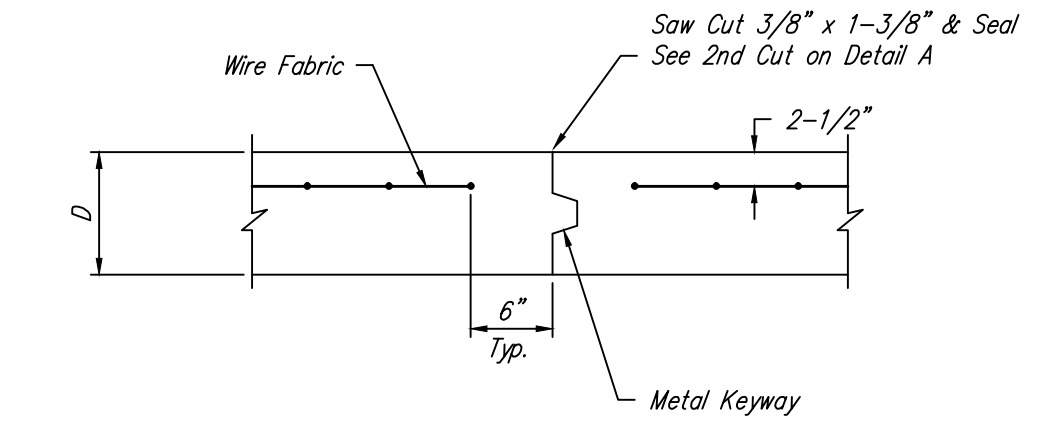
STATE	PROJECT NO.	YEAR	SHEET NO.	TOTAL SHEETS
KANSAS	87N-0238-01	2009	23	59

DATE	
BY	
REFERENCES NOTED	
REFERENCES CHECKED	

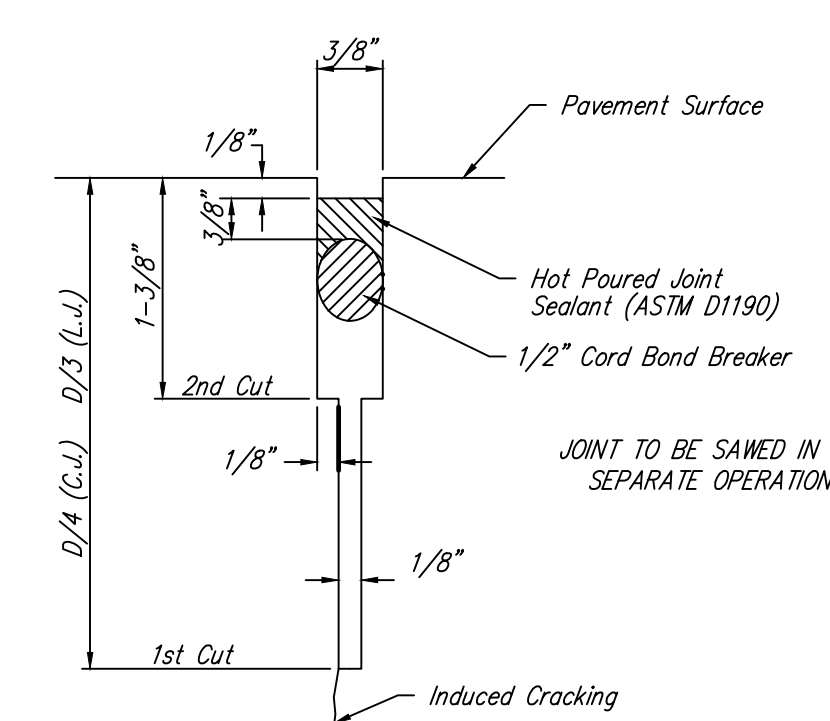


**EXPANSION JOINT**

NOTE: Extra Thickness to be Subsidiary to Price of Square Yards Pavement

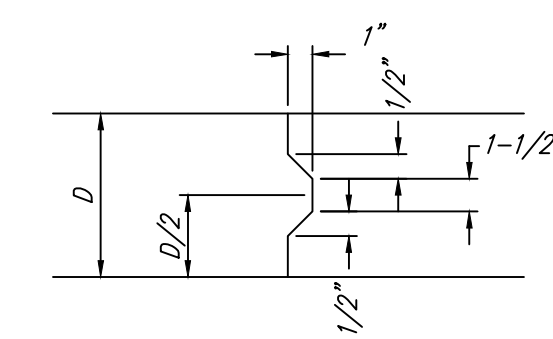


**OPTIONAL CONTRACTION JOINT**

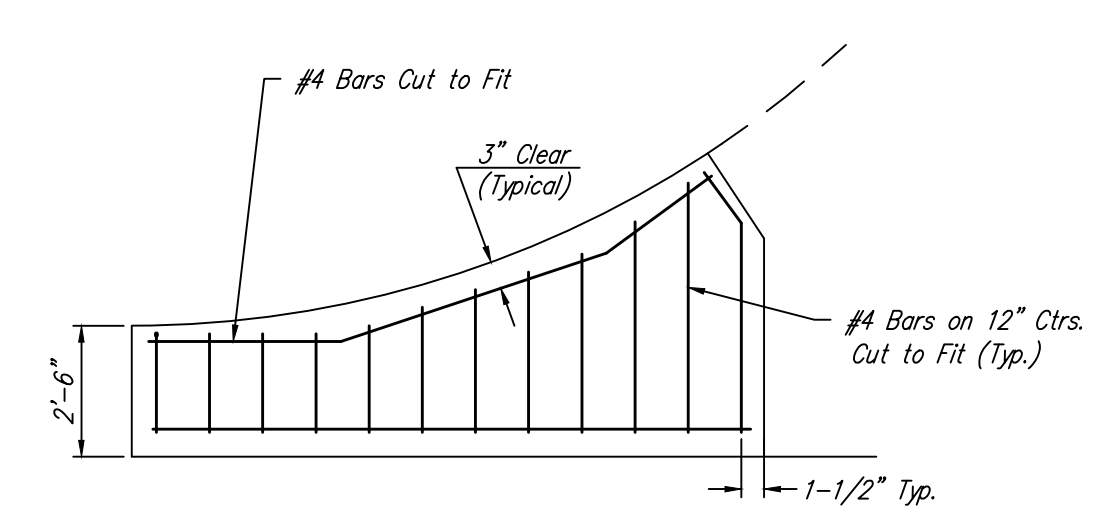


**SAW JOINT DETAIL**

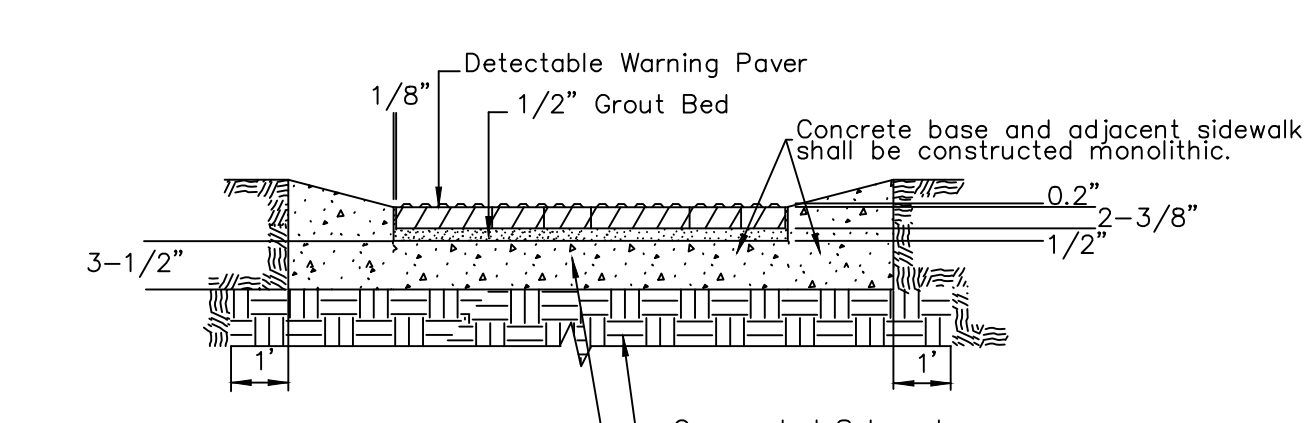
(TYPE A)  
STANDARD WHEELCHAIR RAMP  
WITH DETECTABLE WARNING  
CONSTRUCTION DETAIL FOR STREETS  
WITH COMBINED CURB & GUTTER



**KEYWAY DETAIL**

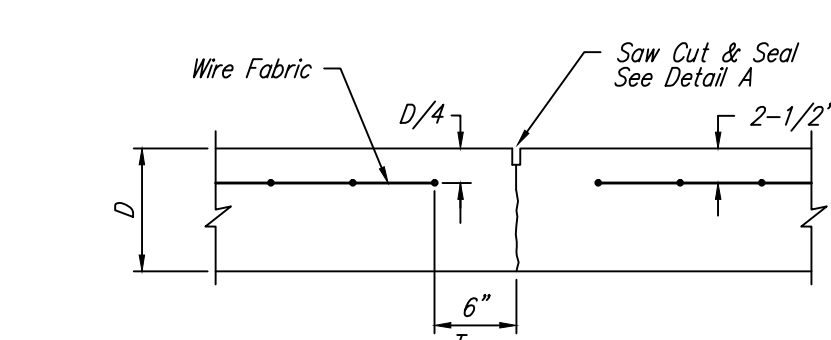


**WING REINFORCING DETAIL**

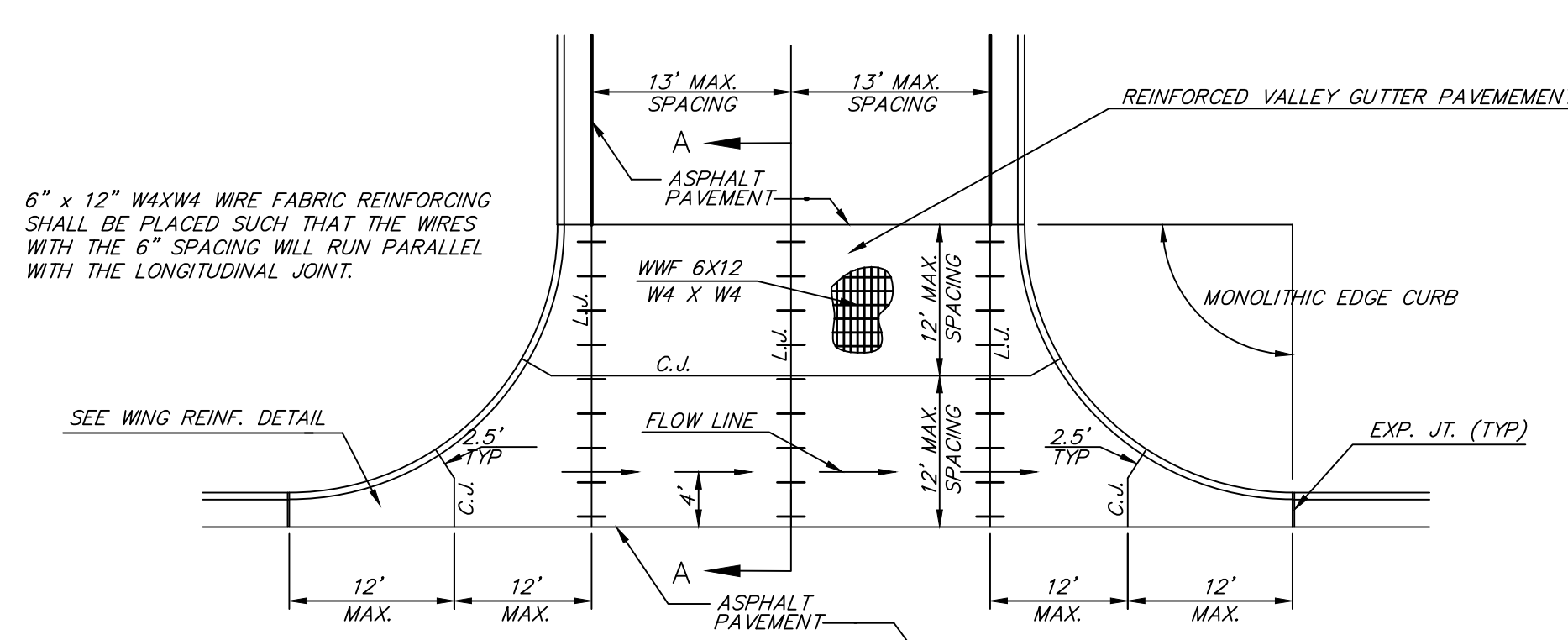


**TYPICAL SECTION DETECTABLE WARNING PAVEMENT**

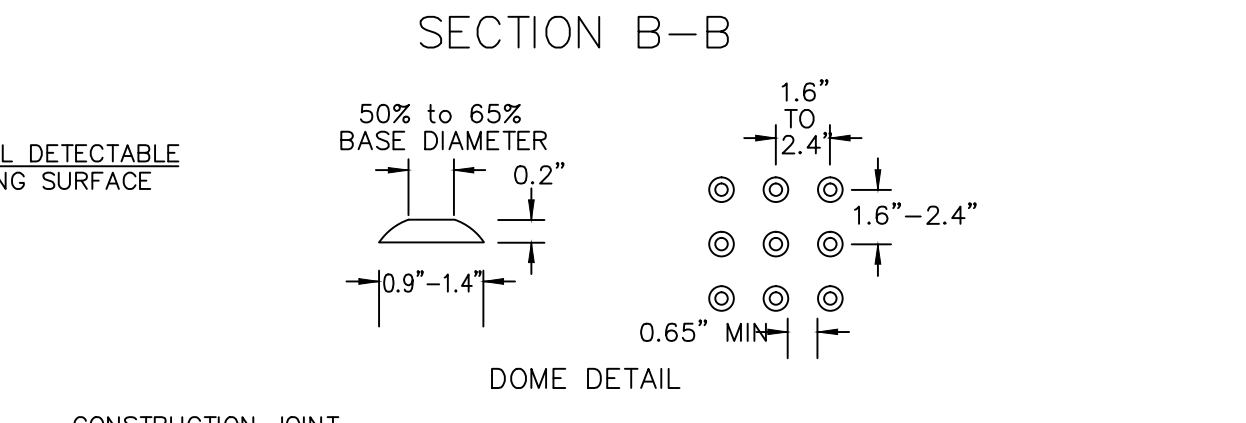
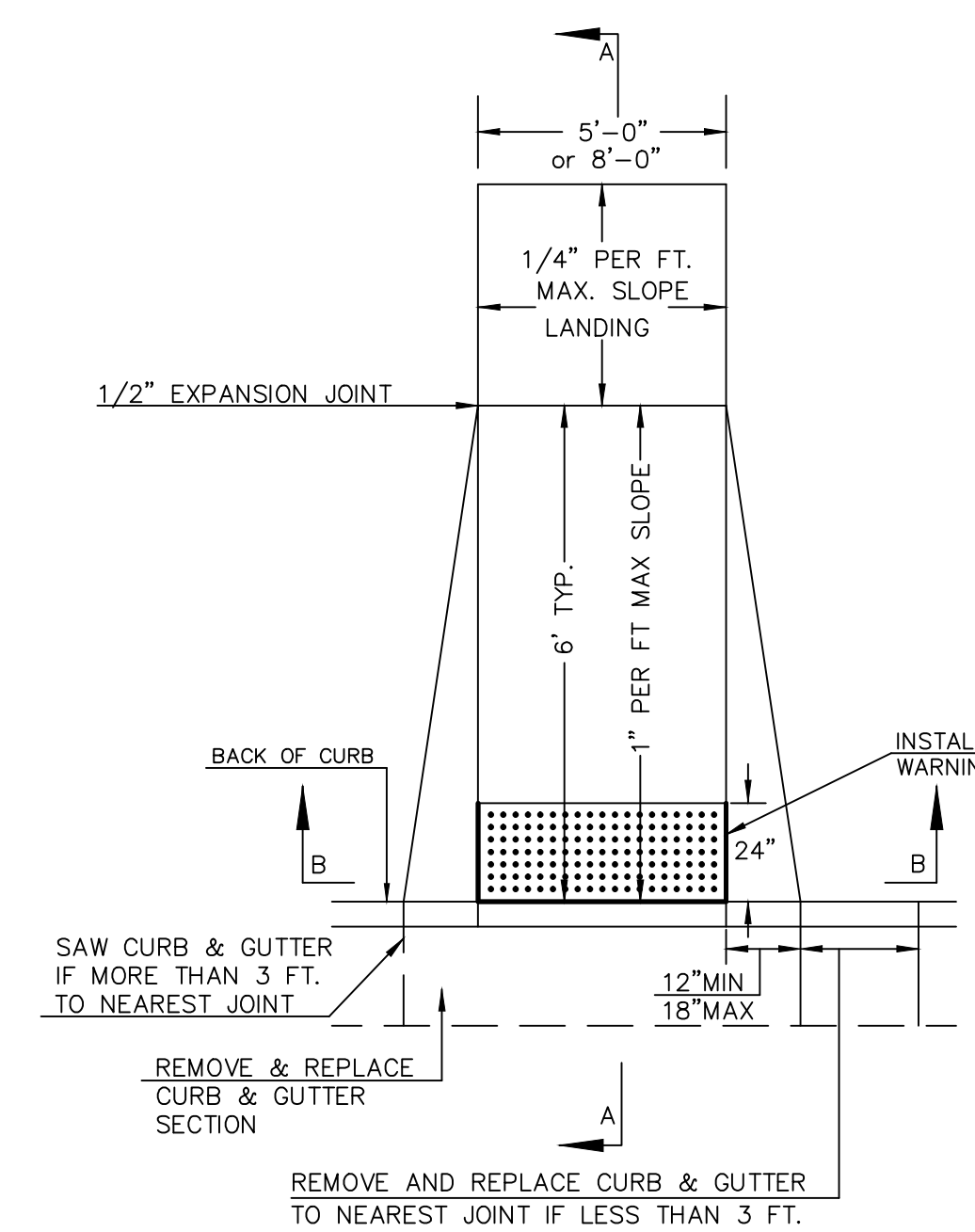
NOTE: RAMPS TO COMPLY WITH LATEST ADAAG GUIDELINES. PAVESTONE DETECTABLE WARNING PAVERS (OR AN APPROVED EQUAL) SHALL BE USED IN ALL WHEELCHAIR RAMPS. THE RED PAVER SHALL BE INSTALLED USING A BASKET WEAVE/PARQUET PATTERN. OTHER PATTERNS MAY BE USED WITH APPROVAL OF ENGINEER. SAND FILL JOINTS. ALIGN DOMES IN THE DIRECTION OF PEDESTRIAN TRAVEL.



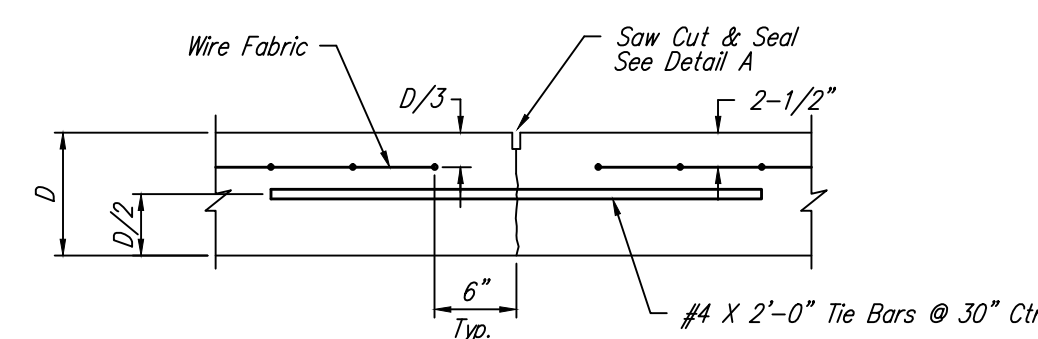
**CONTRACTION JOINT DETAIL (C.J.)**



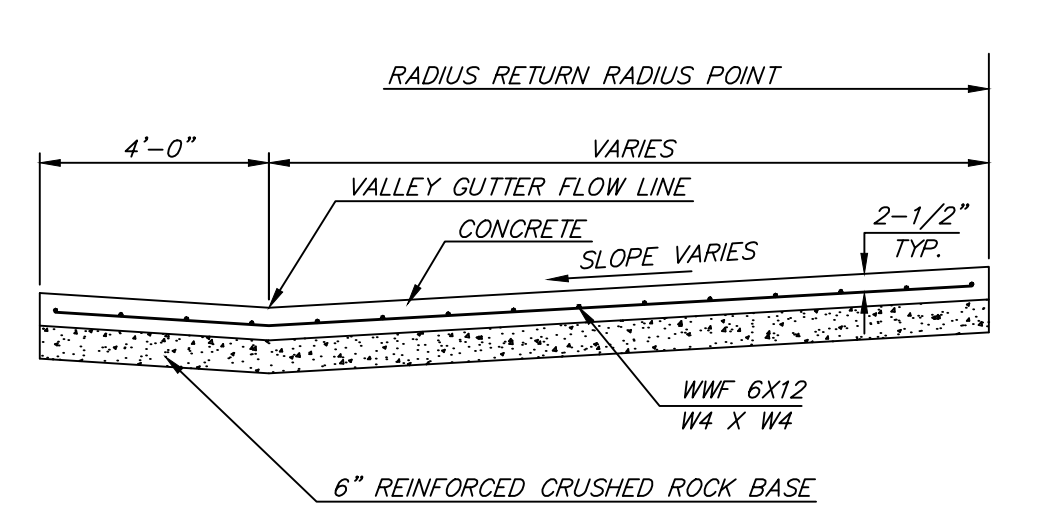
**PLAN**



**SECTION B-B**

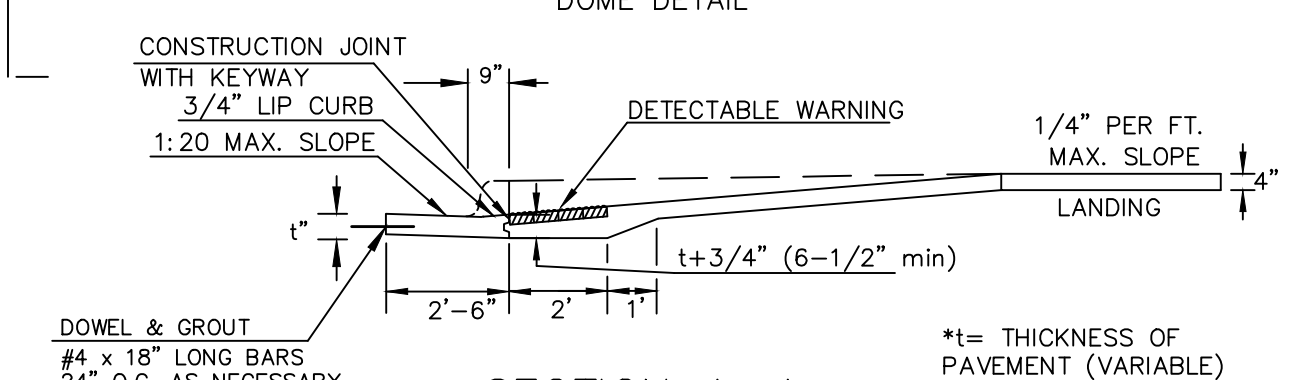


**LONGITUDINAL JOINT DETAIL (L.J.)**



**SECTION A-A**

**REINFORCED VALLEY GUTTER DETAIL**



**SECTION A-A**

AUGUST 4, 2003

D = 5"