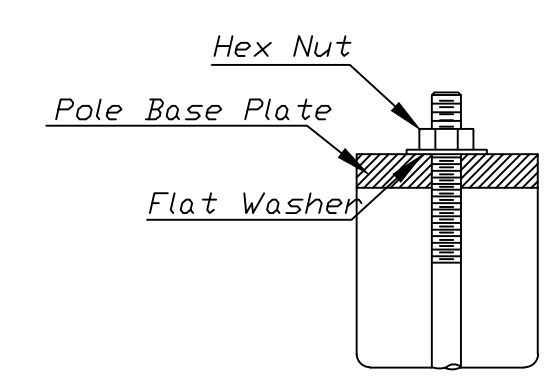


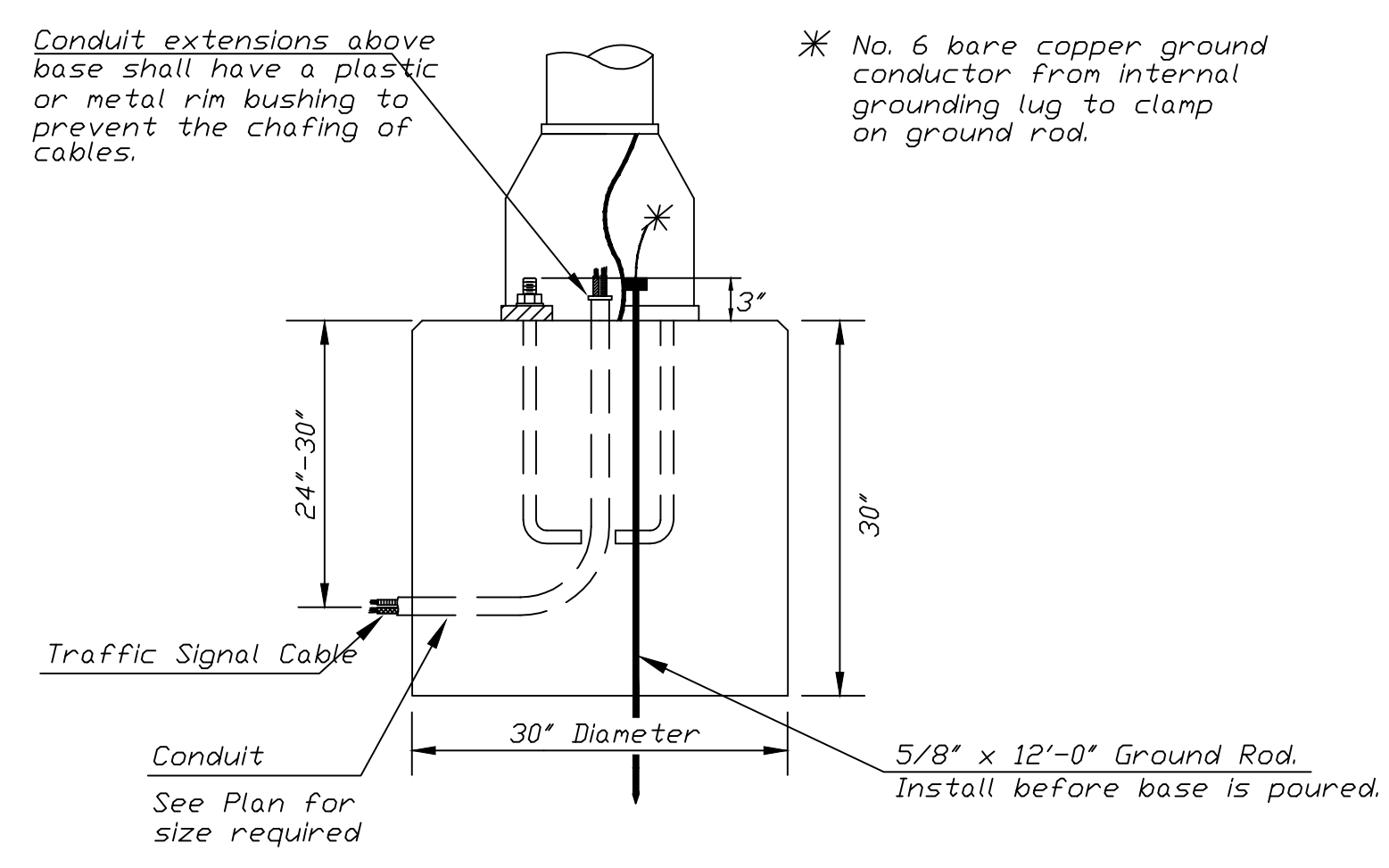
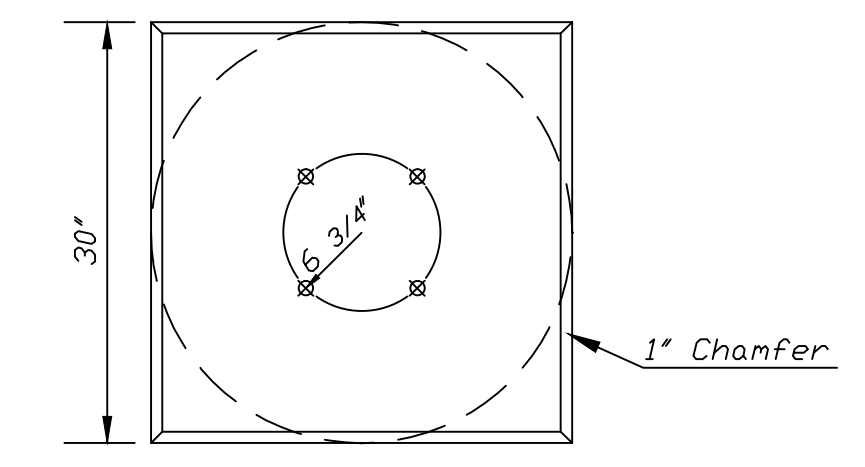
STATE	PROJECT NO.	YEAR	SHEET NO.	TOTAL SHEETS
KANSAS	87N-0238-01	2008	36	59

DATE	
BY	
REFERENCES NOTED	
REFERENCES CHECKED	

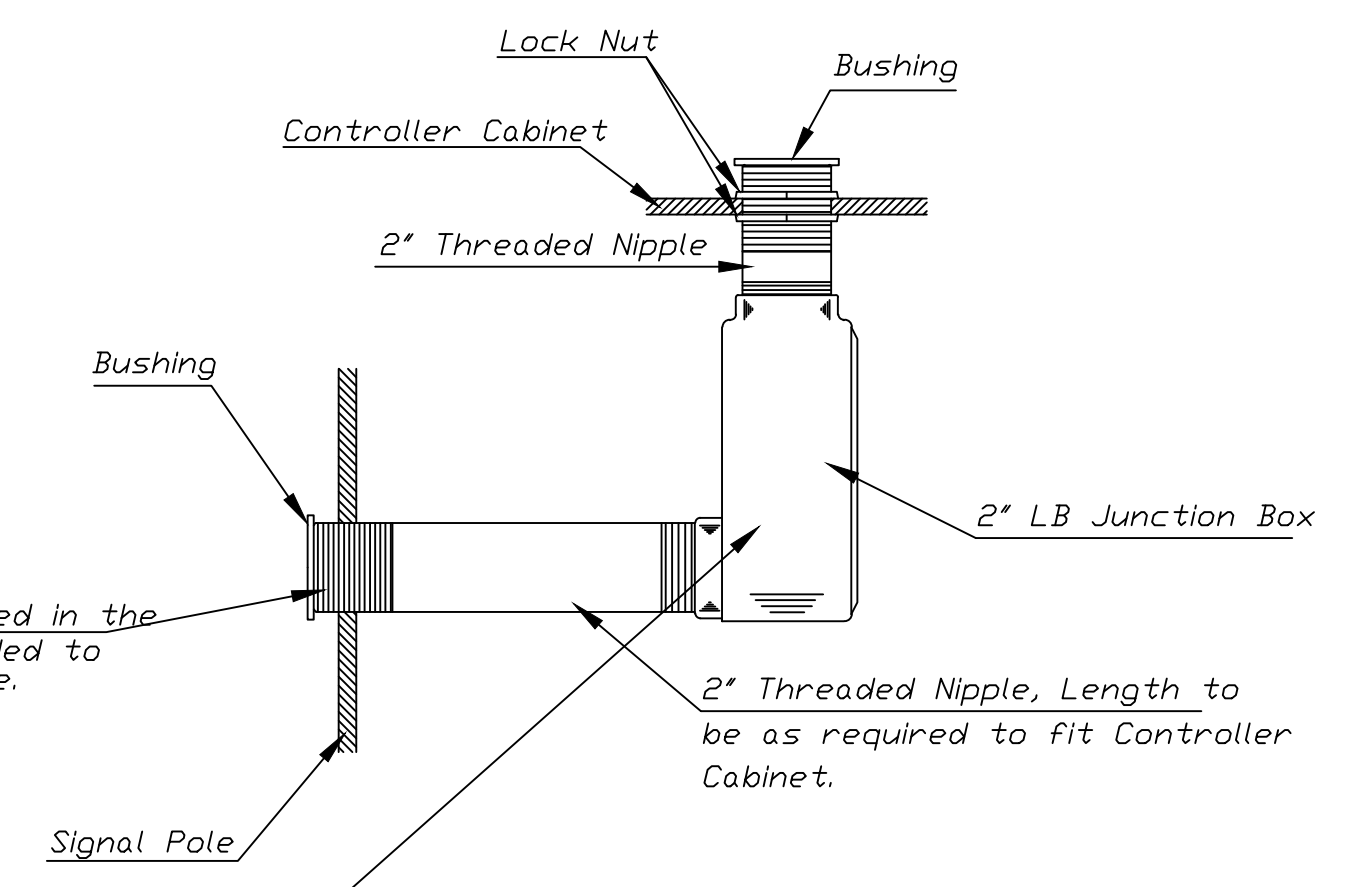
Use Keystone "No-Weld Number 1 Anti-Seize Compound" on all bolts & nuts.



ANCHOR BOLT  
DETAIL



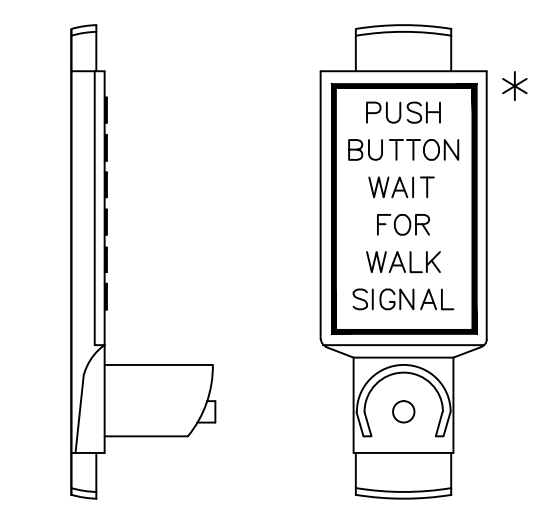
CONCRETE BASE DETAIL



A hole shall be drilled in the signal pole & threaded to receive the 2" nipple.

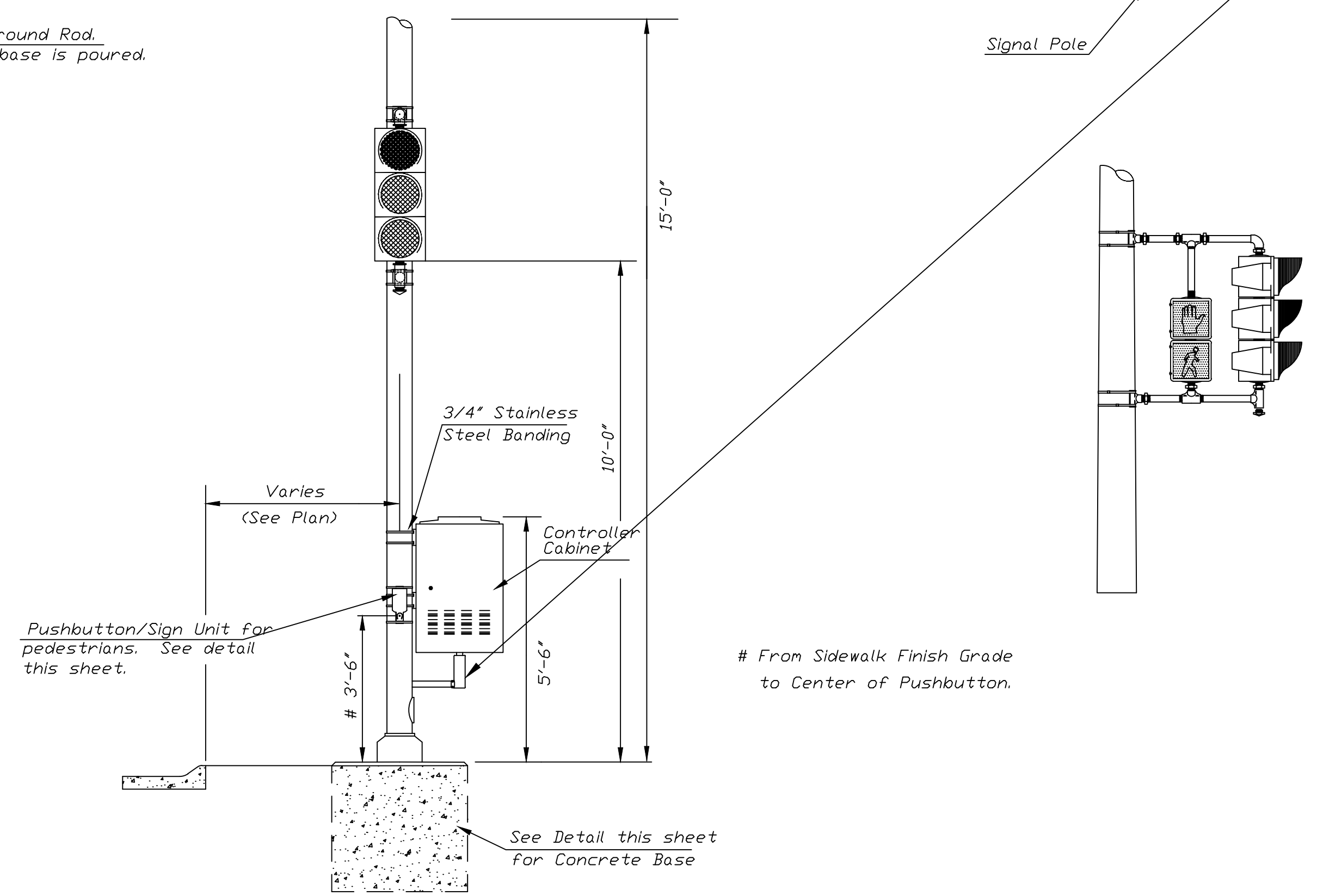
2" Threaded Nipple, Length to be as required to fit Controller Cabinet.

\* NOTE: MESSAGE TO BE CAST WITH HOUSING (ONE PIECE)



INSTALL PEDESTRIAN PUSHBUTTON UNDERNEATH CORRESPONDING PEDESTRIAN SIGNAL HEAD ON SIDE OF POLE NEAREST CROSSWALK. UNIT SHALL BE FIRMLY ATTACHED TO THE SIDE OF POLE WITH 3/4" STEEL BANDS. SHARP ENDS SHALL BE FOLDED UNDER TO PREVENT INJURY TO PEDESTRIANS.

PEDESTRIAN PUSHBUTTON/SIGN  
UNIT DETAIL



# From Sidewalk Finish Grade to Center of Pushbutton.

TRAFFIC SIGNAL PEDESTAL

PROJECT DESCRIPTION			
TRAFFIC SIGNAL PEDESTAL & CONCRETE BASE			
DETAIL SHEET			
PROJECT NUMBER			
DRAWN BY: T.M.	SCALE	REVISED BY: L.R.B.	
DATE: MAY 97	NO SCALE	DATE: MAY 2004	
CITY OF WICHITA DEPARTMENT OF PUBLIC WORKS			
ENGINEERING DIVISION PAUL GUNZELMAN, TRAFFIC ENGINEER			SHEET OF