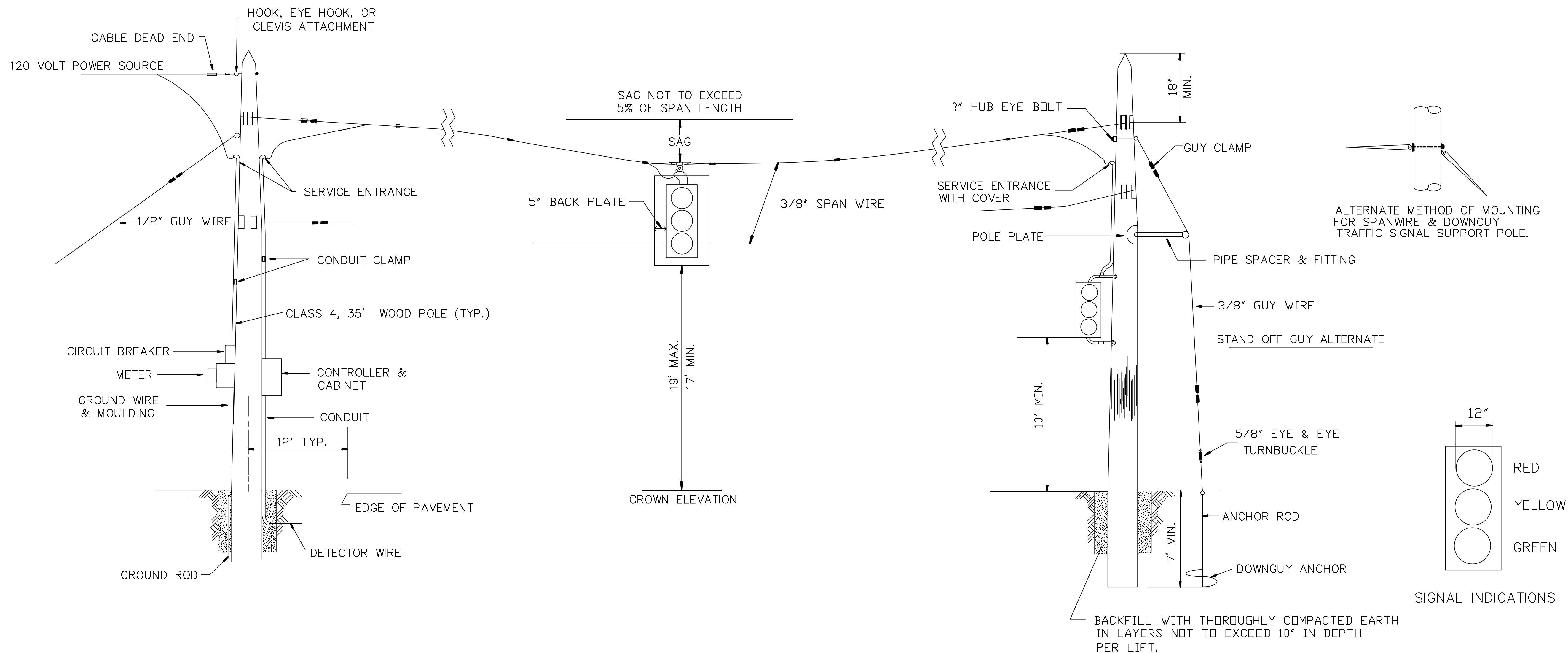


| | | | | |
|--------|-------------|------|-----------|--------------|
| STATE | PROJECT NO. | YEAR | SHEET NO. | TOTAL SHEETS |
| KANSAS | 87N-0238-01 | 2009 | 42 | 59 |



GENERAL NOTES

THE ENGINEER IN CHARGE OF CONSTRUCTION WILL NEED TO APPROVE ALL LOCATIONS FOR TRAFFIC SIGNAL POLES TO BE INSTALLED. FINAL POSITIONS & AIMING OF SIGNAL FACES TO BE DETERMINED IN THE FIELD.

TRAILER MOUNTED PORTABLE TRAFFIC SIGNALS MAY BE SUBSTITUTED FOR SPAN WIRE SIGNALS WITH THE APPROVAL OF THE ENGINEER.

THE TRAFFIC SIGNAL SYSTEM SHALL CONFORM TO AND BE OPERATED ACCORDING TO THE REQUIREMENTS OF THE LATEST M.U.T.C.D. ADOPTED BY THE SECRETARY.

CONTACT LOCAL UTILITY COMPANIES TO ADVISE THEM OF INSTALLATION AND COORDINATE POWER HOOK-UP.

ALL WIRING INSTALLED SHALL CONFORM TO THE NATIONAL ELECTRICAL CODE AND LOCAL ORDINANCES & REQUIREMENTS.

THE POWER SUPPLY AND THE OPERATION & MAINTENANCE OF THE SIGNAL SYSTEM SHALL BE THE RESPONSIBILITY OF THE CONTRACTOR.

NOTE:
SEE TE734 FOR ADDITIONAL
INFORMATION.

| | | | | |
|-----|----------|----------------|------|--------|
| 3 | | | | |
| 2 | 8-8-07 | ADDED NOTE | M.B. | A.A.A. |
| 1 | 11-19-03 | CHANGED BORDER | B.H. | S.A.B. |
| NO. | DATE | REVISIONS | BY | APP'D |

KANSAS DEPARTMENT OF TRANSPORTATION
TEMPORARY TRAFFIC SIGNALS
ONE-LANE OPERATION
(TYPICAL INSTALLATION)

| | | | | |
|------------|------------|-----------|----------------------|------------|
| TE733 | 8-8-07 | APP'D | Anthony A. Alrcobire | 9/1/00 |
| DESIGNED | L.E.R. | DETAILED | B.A.H. | QUANTITIES |
| DESIGN CK. | DETAIL CK. | QUAN. CK. | TRACE CK. | |

Plotted By : \$\$\$\$KDOTORP\$\$\$5th Floor
Plot File : \$\$\$\$DGN\$SPEC\$
Plot Date : \$\$\$\$SYTIME\$\$\$