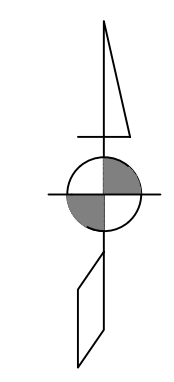
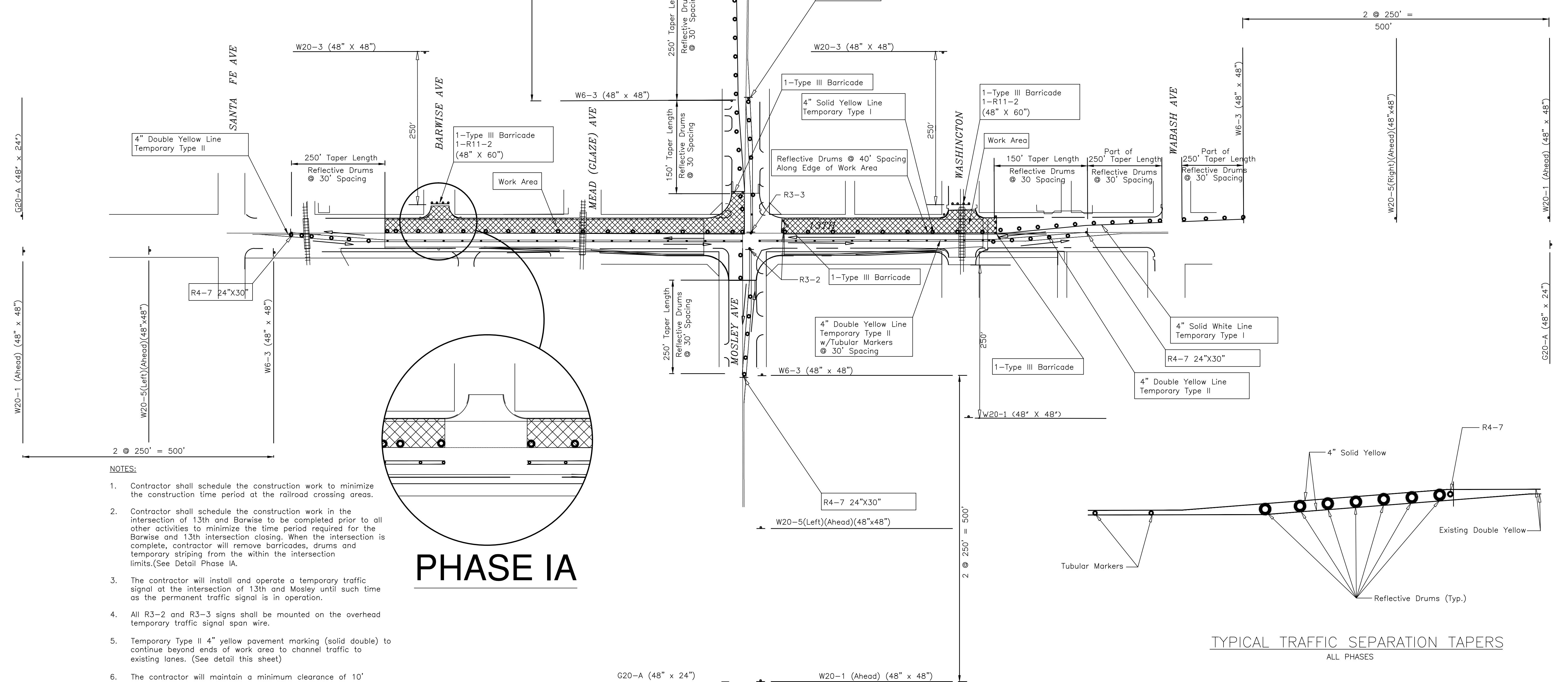
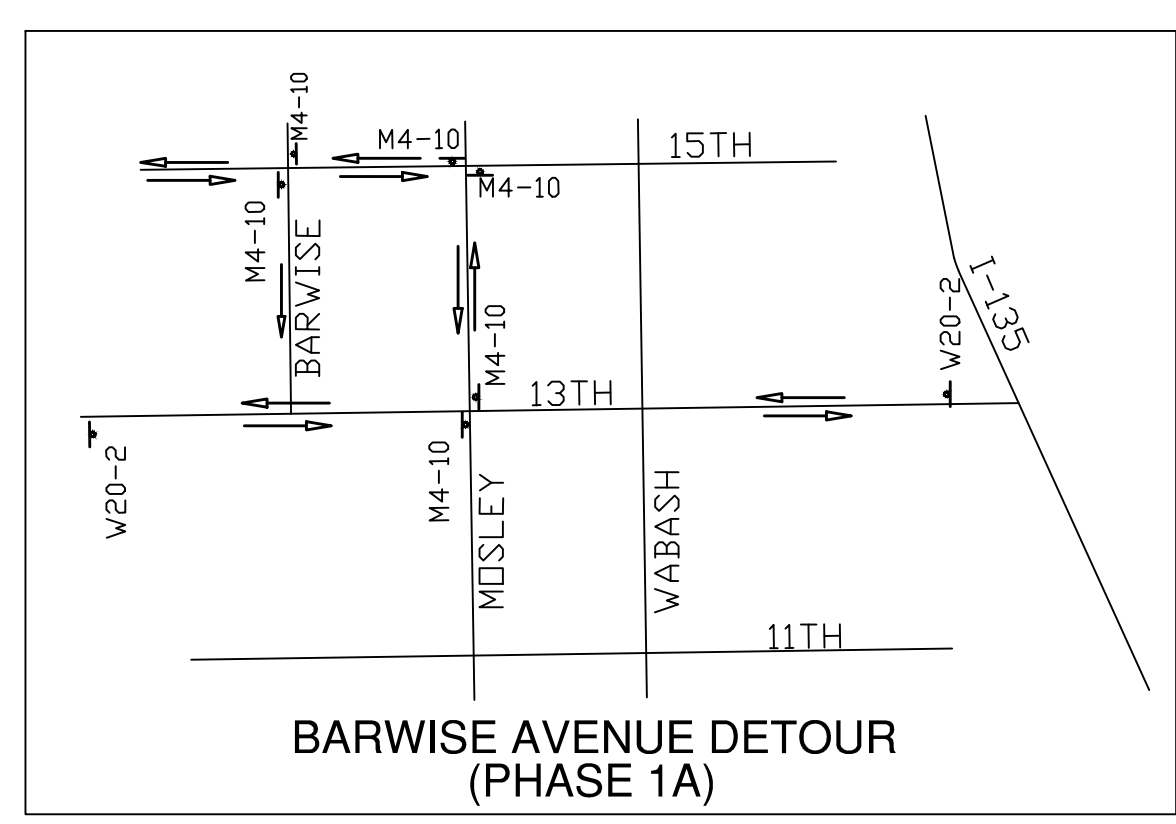


STATE	PROJECT NO.	YEAR	SHEET NO.	TOTAL SHEETS
KANSAS	87N-0238-01	2009	44	59



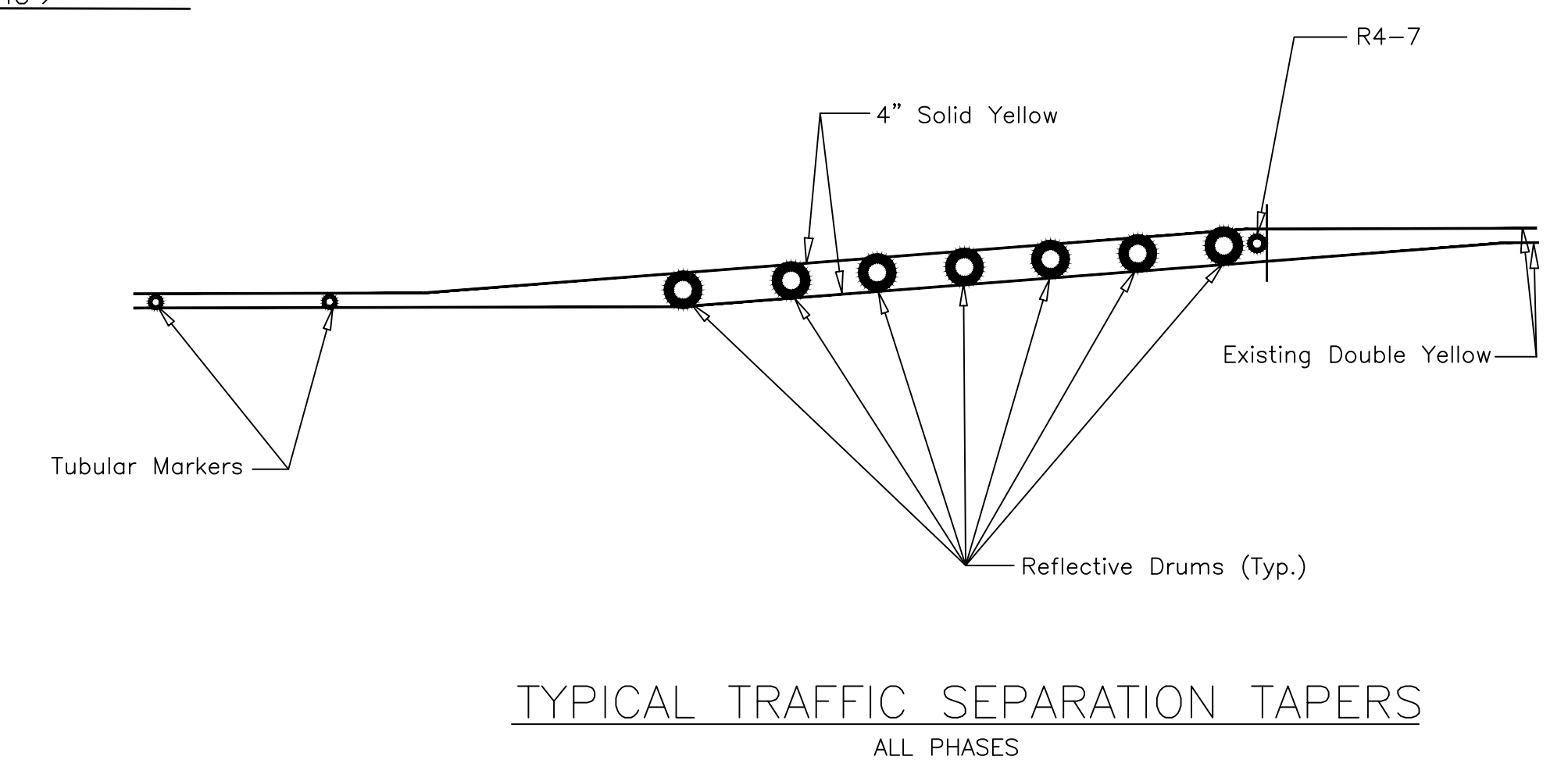
DATE	
BY	
REFERENCES NOTED	
REFERENCES CHECKED	



- NOTES:**
- Contractor shall schedule the construction work to minimize the construction time period at the railroad crossing areas.
  - Contractor shall schedule the construction work in the intersection of 13th and Barwise to be completed prior to all other activities to minimize the time period required for the Barwise and 13th intersection closing. When the intersection is complete, contractor will remove barricades, drums and temporary striping from the within the intersection limits. (See Detail Phase IA).
  - The contractor will install and operate a temporary traffic signal at the intersection of 13th and Mosley until such time as the permanent traffic signal is in operation.
  - All R3-2 and R3-3 signs shall be mounted on the overhead temporary traffic signal span wire.
  - Temporary Type II 4" yellow pavement marking (solid double) to continue beyond ends of work area to channel traffic to existing lanes. (See detail this sheet)
  - The contractor will maintain a minimum clearance of 10' between any live RR track rail and any traffic control device or sign.
  - The contractor will coordinate the work at the RR crossing at Mead and will be responsible for RR expenses such as installing a short gate arm or flagging the crossing. The contractor will verify that a STOP/FLAG order has been placed for this crossing before accomplishing any work within 25 feet of the crossing area.
  - Proposed sanitary sewer will be constructed during PHASE I and the proposed waterline will be constructed during PHASE II of the paving construction project.

# PHASE IA

# PHASE I



**KANSAS DEPARTMENT OF TRANSPORTATION**  
**CONSTRUCTION TRAFFIC CONTROL**  
**PHASE I**